

BCAM™ SD Thermal Imaging InfraRed Camera

Non-invasive monitoring and diagnosing of building conditions

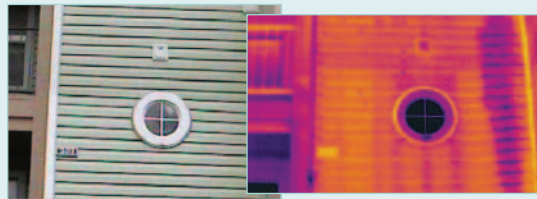
Provide immediate high-resolution thermal imagery, revealing potential structural and moisture issues, energy efficiency and even rodent or pest discovery

Features:

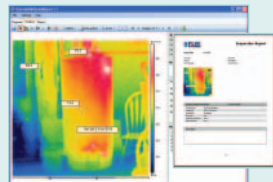
- High accuracy of 2% and thermal sensitivity better than 0.10°C helps you find problems faster and easier
- Automatic Color Alarm alerts users to moisture-laden areas during building scans — detects potential areas of mold growth, as well as verify when structures are moisture-free during the drying out process
- Insulation Alarm easily detects areas that don't fulfill the insulation requirements
- Dew Point Alarm displays areas with risk of surface condensation where mold growth could occur
- Instant imaging of entire room to reveal wet conditions behind surfaces, such as enameled walls and wallpaper and even in places where moisture meters can't reach
- Long Battery Life lasts for 7 hours of continuous operation on a single charge for uninterrupted inspections
- Large 3.5" (89mm) color LCD with razor-sharp resolution
- Lightweight (19 ounces), compact, rugged meter with easy grip handle construction meets IP54 dust/splashproof standards
- The built-in Laser LocatIR™ pointer quickly helps you associate the hot spot on the IR image with the real physical target which greatly enhances the ability to target inconsistencies
- Standard 128MB SD card stores up to 1000 Radiometric JPEG images. All 14,400 thermal pixels of each image can be analyzed using the included QuickReport™ PC Software
- Complete with 128MB SD Card, Li-Ion rechargeable battery with 100-260V AC adaptor/charger, QuickReport software with USB cable, lens cap, hand strap, and heavy duty case



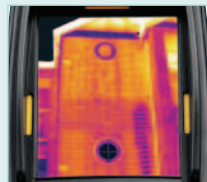
Compact and Lightweight camera only weighs 19 ounces!



The thermogram of the apartment building shows the path of a serious leak, completely hidden within the wall, from a washing machine on the third floor



QuickReport PC software enables user to analyze Temperature of all 14,400 pixels of any InfraCAM SD JPEG image



Large razor-sharp color LCD with ASP (Advanced Signal Processing)

Ordering Information:

IRCS7-B	BCAM™ SD Thermal Imaging InfraRed Camera	\$4995.00
1196398	Li-Ion Rechargeable Battery.....	\$199.00
1910399	AC Adapter Charger (110-240V, U.S. Plug)	\$300.00
1910490	Cigarette Ligher Adapter Kit, 12VDC (1.2m cable)	\$99.00
1196474	2-Bay Battery Charger including Power Supply (U.S. plug)....	\$450.00
3300149	ITC Level I Certification Training per attendee	\$1750.00

Features	
Temperature range	14°F to 212°F (-10°C to 100°C)
Image Storage	1000 Images (SD card memory)
Emissivity	0.1 to 1.0 (adjustable)
Imaging Performance / Image Presentation	
Field of view/min focus distance	25° X 25°/0.3m
Thermal sensitivity (N.E.T.D)	<0.10°C at 25°C
Detector Type	Focal plane array (FPA) uncooled microbolometer; 120 X 120 pixels
Spectral range	7.5 to 13µm
Display	3.5" color LCD
Video output	MPEG-4 via USB
Image Controls	Palettes (Iron, Rainbow, and Black/White), level, span, auto adjust (continuous/manual)
Set-up controls	Date/time, info, LCD intensity, power down, and English/Spanish languages
Laser Classification	Class 2
Laser Type	Semiconductor AlGaInP Diode Laser: 1mW/635nm (red)
Measurement modes	Spot, Area, Min/Max
Power Source / Environmental Specs	
Battery Type	Li-Ion
Battery operating time	7 hours, Display shows battery status
Charging system	In camera, AC adapter or 12V from car with optional 12V cable
AC operation	AC adapter 90-260VAC, 50/60Hz 12VDC out
Voltage	11-16 VDC
Operating temperature range	5°F to 122°F (-15°C to 50°C)
Storage temperature range	-40°F to 158°F (-40°C to 70°C)
Humidity	Operating and storage 20% to 80%, non-condensing, IEC 359
Shock	25G, IEC 68-2-29
Vibration	2G, IEC 68-2-6
Dimensions/Weight	9.6x3.2x4.1" (243x81x103mm)/<19oz (0.55kg), including battery