

SPECTROLINE®

uVision™ Series

UV-A/White Light LED NDT Inspection Lamp
Part Nos. UV-365ZSBLC and UV-365ZHC

UV-365ZSBLC



UV-365ZHC



RoHS
Compliant



SPECTRO-UV

7/23 AM18026ML-7
PRINTED IN U.S.A

Find Quality Products Online at:

www.GlobalTestSupply.com

sales@GlobalTestSupply.com



WARNING

UV emitted from this product. Avoid eye and skin exposure to unshielded products.
FOR PROFESSIONAL EXAMINATION USE ONLY

IMPORTANT SAFETY INSTRUCTIONS (Read all instructions)

- Do not operate the uVision™ Series UV-A/White Light LED NDT Inspection Lamp (UV-365ZSBLC/UV-365ZHC) if the lamp has been damaged.
- Do not look directly into the light. **ALWAYS** wear the UV-absorbing protective glasses provided when operating the lamp. Use in low-light conditions to achieve the best inspection results. The darker the room, the greater the fluorescent contrast.
- The uVision™ is not approved for use in hazardous atmospheres. Do not attempt to use it in areas requiring explosion-proof lighting.
- Never use this equipment in any manner not specified in these instructions because your protection may be impaired.
- NEVER** aim the lamp in the direction of another human being. **It is meant for professional fluorescent inspections ONLY!**
- DO NOT** attempt to modify the lens assembly or light output. Doing so may alter the performance and intensity of the uVision™.

OPERATION

- The lamp has a three-position rocker power switch (II – UV; O – off; I – white light) on the handle.
- The uVision™ has a White Light Intensity Adjustment Controls located on the back plate of the lamp. The Battery Indicator is also located on the back plate of the lamp. The Battery Indicator light will be Orange when the battery is charged and the lamp is operating within RRES compliance. When the battery is nearly depleted, the light will flash between Red and Orange.
- The uVision™ is designed to automatically shut off if the unit operates outside of RRES compliance standards (UV-365ZSBLC). To turn the unit back ON from a shut off event, turn the lamp OFF and then ON using the three-position rocker switch.
- WARNING:** Be sure to use genuine uVision™ replacement parts. Using another manufacturer's replacement parts could affect product performance and will void the warranty.



DISASSEMBLING THE FILTER PROTECTOR FOR MAINTENANCE

The outer rubber cover/filter holder may be removed periodically to clean the Borofloat® glass filter. To disassemble the Borofloat® Filter Protector (FP-600), first remove the front rubber cover/filter holder. Peel the rubber cover/filter holder toward the front portion of the lamp.



The Borofloat® glass filter will remain inside the protector. To remove the Borofloat® glass filter, peel around the edge of the rubber cover/filter holder and push the glass filter out. To replace or reinsert the Borofloat® glass filter into the rubber cover/filter holder, slide the Borofloat® glass filter into the channel of the rubber cover/filter holder. Manipulate the rubber cover around the filter. Ensure the glass filter is evenly seated.

REPLACING THE UV LENSES

The UV-A lenses (UL-110) covering the three UV-A LEDs must be replaced over time. They will solarize (become cloudy and yellow) from repeated use. A set of detailed instructions come with the replacement UV-A lenses (UL-110). See Replacement Parts section and contact Customer Service for more details.

ENVIRONMENTAL SPECIFICATIONS

The uVision™ series lamps are designed to be safe under the following conditions:

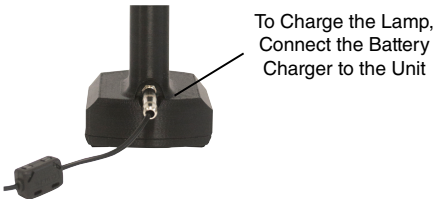
- For Indoor/Outdoor Use (dustproof and protected against low pressure jets of water);
- Temperature 41°F to 122°F (5°C to 50°C);
- Mains supply voltage fluctuations not to exceed ±10% of the nominal voltage.

LIMITED WARRANTY

The warranty policy for the uVision™ lamp is provided on the Certificate of Limited Warranty enclosed separately with each unit. NOTE: For assistance of any kind, please contact the Customer Service Department at Spectro-UV. Provide the model, the serial number of the unit, and the date of purchase. The unit's serialization information is located (1) on the packaging the unit is shipped in, (2) engraved on the unit's handle, and (3) labeled on the reverse side of the unit's back plate.

CHARGING AND USAGE OF THE LI-ION BATTERY

- Check if the voltage characteristics of the battery charger match the voltage of the AC outlet.
- The lamp will operate for approximately 8+ hours before turning OFF. The UV-365ZSBLC is designed to automatically shut off if the unit operates outside of compliance standards. To turn the unit back ON from a shut off event, turn the lamp OFF and then ON using the three-position rocker switch. The Battery Indicator light will be Orange when the battery is charged and the lamp is operating within RRES compliance. When the battery is nearly depleted, the light will flash between Red and Orange.
- Only charge indoors on a dry surface. See warning label on charger for more information.
- To avoid short circuit be sure to attach the dust cap to the charger port to keep dry and free from moisture.



BATTERY LED INDICATOR STATUS
Orange, Power on, battery good
Blink Orange and Red = Low Battery; time left approx. 10 – 15 mins
Red = Dead Battery, Approx. 5 minutes or less remaining
Shut Down

CARE AND USE OF LITHIUM-ION (Li-ion) BATTERIES

- Li-ion battery packs last longer when charged and stored in a temperature range between 50°F to 86°F (10°C to 30°C) away from heat, sunlight and humidity.
- Always charge batteries to full capacity before long-term storage (approximately 30 days) to prevent aging. After storage they must be charged, which may require conditioning (two or three charge/discharge cycles) to reach full capacity.
- Do not subject these batteries to repeated deep discharges that run the batteries down completely on a regular basis as this will greatly shorten battery life.
- Li-ion batteries generally have no voltage sag until the last 10% of charge.
- Li-ion batteries have no toxic lead or mercury, and a life expectancy of 500 charge/discharge cycles or more, provided the battery is not overcharged or heavily discharged. Recycle according to local disposal laws.

MEASURING LAMP INTENSITY

To ensure that your uVision™ series lamp is operating at the required UV intensity, it should be checked periodically. Spectro-UV offers a variety of sensors and meters. The AccuPRO™ XP-2000 combines the functionality of a UV and visible light radiometer/photometer, and is specially designed to measure UV irradiance with wavelengths of 320–400nm (with peak at 365nm) and visible light from 460–675nm (with peak at 555nm). Other suitable meters include the AccuMAX™ XRP-3000 radiometer/photometer kit, using dual-wavelength UV-A and VIS sensor detectors to accurately measure the irradiance of a light source. The AccuMAX™ XR-1000 digital readout unit with the XS-365 UV sensor or the DM-365XA digital readout unit can also be used for UV-A measurement.

Technical Details

KEY FEATURES OF UV-365Z SERIES

- Long-lasting UV-A lenses.
- Cool running, fanless design.
- Lightweight and rugged construction.
- White Light, LED Inspection Light.
- IP65 Rated: The uVision™ Series lamps are protected from total dust ingress and from low pressure jets of water (from all directions). For more details, consult EN 60529 (British BS EN 60529:1992, European IEC 60509:1989).
- **UV-365ZSBLC:** Nominal steady state intensity of 4,500 μW/cm² (+/- 250 μW/cm²) at 15 inches (38cm).
- Large 6-inch diameter coverage area at 15 inches (38cm) with a minimum UV-A intensity of 1,200 μW/cm².
- Less than 1.0 foot-candle (11 lux) emission.
- Certificate of Conformance (ASTM E3022-18) included.
- Validation Report (Rolls Royce RRES 90061) included.
- **UV-365ZHC:** Nominal steady state intensity of 8,000 μW/cm² (+/- 250 μW/cm²) at 15 inches (38cm).
- Large 7.5-inch diameter coverage area at 15 inches (38cm) with a minimum UV-A intensity of 1,200 μW/cm².
- Less than 1.0 foot-candle (11 lux) emission.
- Certificate of Conformance (ASTM E3022-18) included.

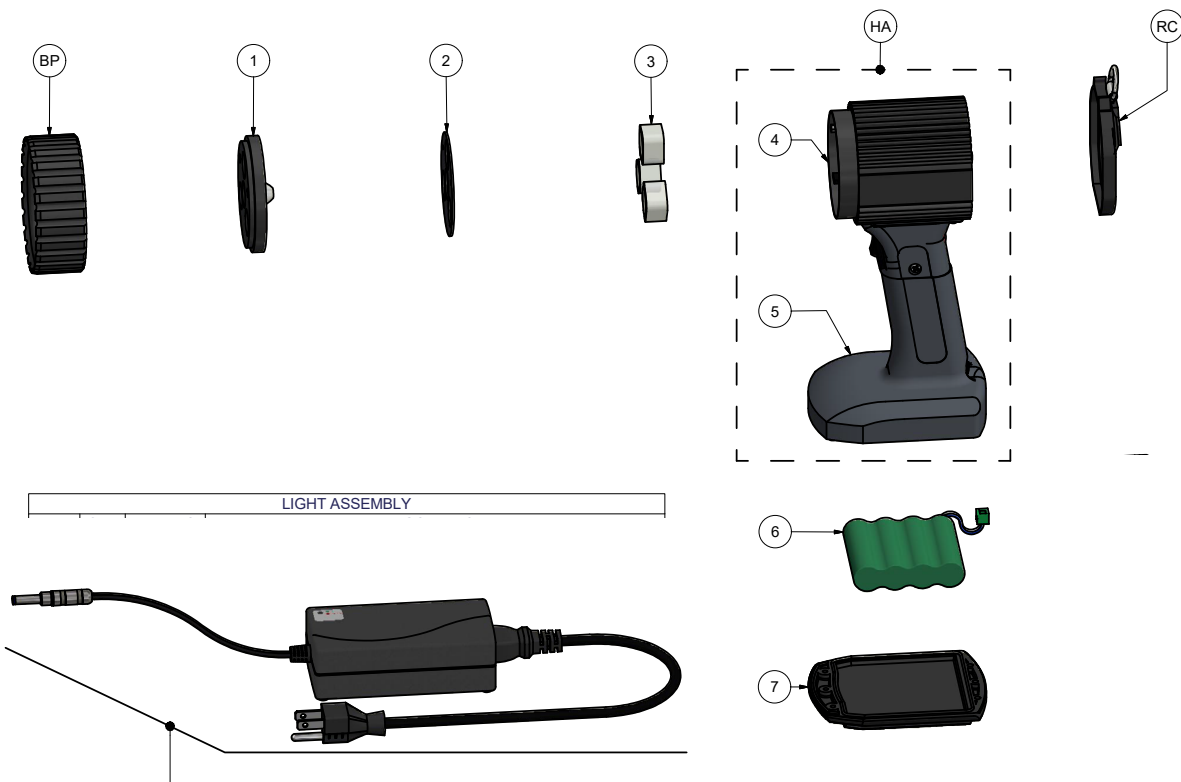
TECHNICAL SPECIFICATIONS

uVision™ Series	UV-A (365nm) and white light
Height	9.5 inches
Length	4.625 inches
Width	3.75 inches
Weight	2.65 lb. (1,202 g)
Light Source	3 UV-A LEDs, 1 white light LED

ELECTRICAL SPECIFICATIONS

Battery Charger:
AC Input: 100-240V/50-60Hz, 0.4A
DC Output: 16.8V/1.8A





BATTERY CHARGER INFORMATION

LAMP	COUNTRY	VOLTAGE	CHARGER
UV-365ZSBLC	US	120	130448
UV-365ZSBLC/F	EU	230	130456
UV-365ZSBLC/FA	AU	240	130457
UV-365ZSBLC/FB	UK	230	130458
UV-365ZSBLC/FBR	BR	220-240	130540
UV-365ZHC	US	120	130448
UV-365ZHC/F	EU	230	130456
UV-365ZHC/FA	AU	240	130457
UV-365ZHC/FB	UK	230	130458
UV-365ZHC/FBR	BR	220-240	130540

REPLACEMENT PARTS

Ref.	Part Number	Description
BP	FP-600	FILTER PROTECTOR ASSEMBLY
1	128196	FRONT COVER PLATE FILTER ASSEMBLY
2	128385	FRONT COVER GASKET
3	UL-110	UV LED LENSES
4	130546	MAIN BODY HOUSING
HA	130336	LAMP HOUSING ASSEMBLY
5	130393	LOWER HANDLE
RC	130397	REAR, RUBBER COVER
6	130395	BATTERY PACK
7	130394	BATTERY COVER