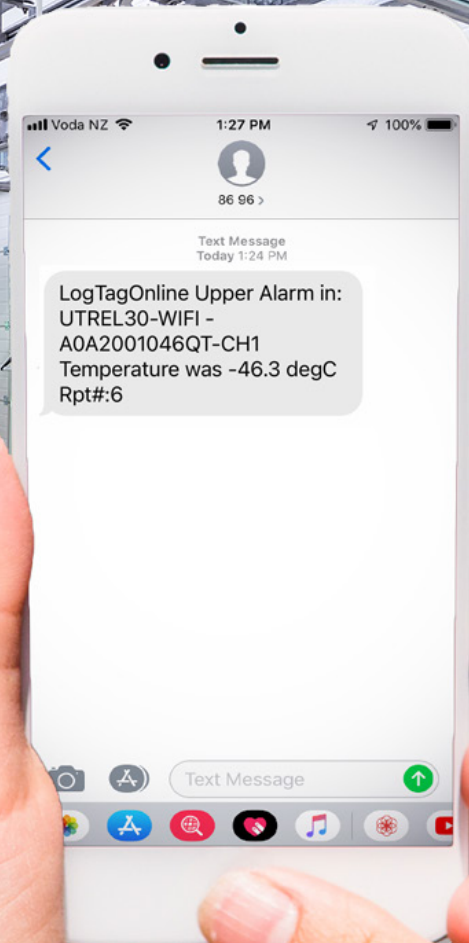


YOUR DATA, ANYWHERE, ANYTIME



LogTag®

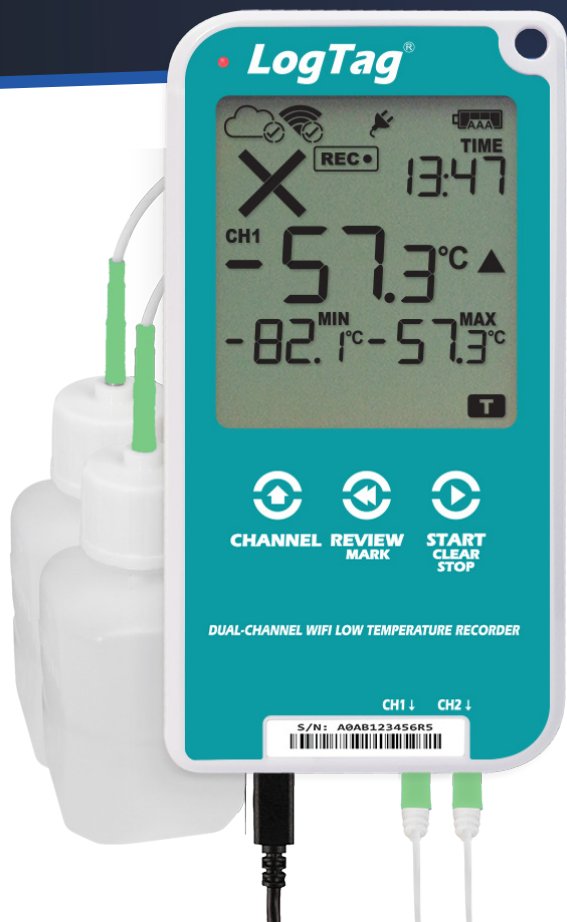
UTREL30-WiFi

30 Day WiFi Dual-Channel
Low Temperature Logger

Find Quality Products Online at:

www.GlobalTestSupply.com

sales@GlobalTestSupply.com

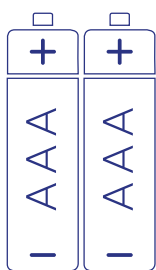


The LogTag® UTREL30-WiFi temperature data logger automatically uploads real-time temperature data to your LogTag® Online cloud account via your existing wireless network.

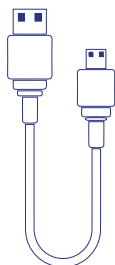
It features a large, easy-to-read display, along with many familiar attributes known from the LogTag® family of data loggers.

These include non-volatile memory that holds up to 32,000 temperature readings, or 16,000 readings per channel. A statistical memory storing maximum and minimum readings and alarm durations for each of the last 30 days.

Accessories



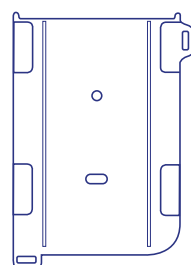
2x AAA Batteries
Not Included



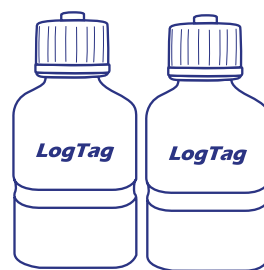
USB Cable
Included



AC Adapter[^]
Included



Wall Mount
Not Included



Buffer assembly
Not Included
(Silica sand recommended for temperatures below -40°C)



Smart Probe
Not Included (Recommended)



External Probe^{}**
Not Included. (Required)

Compatible probes below:

CP10 (Smart Probe)	75mm tip length, ø3.2mm
ST10S	22mm tip length, ø5mm (Not recommended for use with buffer)
ST10M	65mm tip length, ø5mm.
STX50	5 Meter extension cable for ST10/ST100 sensors.

*ST10S Probes are available with a 0.5m, 1.5m or 3m cable
ST10M Probes are available with a 1.5m or 3m cable
E.g. ST10M-15 for 1.5m or ST10M-30 for 3m cable*

[^]US and EU adapter only
^{**}Hot swappable external sensor probes.

Find Quality Products Online at:

www.GlobalTestSupply.com

sales@GlobalTestSupply.com

Features



Real-time data automatically uploaded via Wi-Fi to the LogTag® Online cloud.



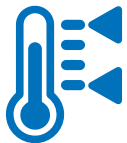
Download data via LogTag® Analyzer or as a PDF (no software required) when Wi-Fi is unavailable.



Configure Wi-Fi settings using LogTag® Mobile application and Bluetooth®.



Check and reset Min-Max temperature reading at any time.



Read current temperature and latest Min-Max temperature at a glance.



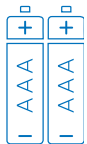
View alarm status for up to 30 days at a glance.



Receive an instant call, SMS or WhatsApp alert from your logger when it detects an excursion* so you can act immediately.



Measure and store up to 16,000 readings for each channel – enough for 67 days at 6 minute logging.



Can be powered by 2x AAA batteries (user replaceable) if external power is lost.



Second battery backup via a coin cell to ensure no data is lost.



Auto-pause function suspends alarm & statistic processing when the external probe is unplugged.



Two socket external probe with auto channel swap function.

*Voice call and SMS message alerts require LogTag® Online paid subscription.

The Bluetooth® word mark and logos are registered trademarks owned by Bluetooth SIG, Inc. and any use of such marks by

Find Quality Products Online at: www.GlobalTestSupply.com

sales@GlobalTestSupply.com

Applications



Vaccine & Pharmaceuticals



Industrial



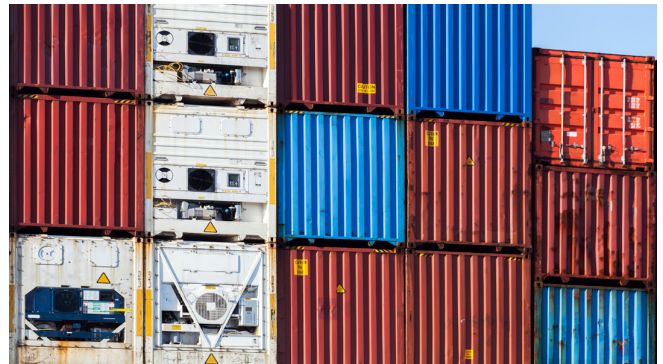
Cold Storage



Clinic



Transportation



Refrigerated Containers

Specifications

Product Model	UTREL30-WiFi.
Sensor Measurement Range	-90°C to +40°C (-130°F to +104°F).
Operating Temperature Range	-30°C to +60°C (-22°F to +140°F).
Storage Temperature Range	10°C to +40°C (32°F to +104°F).
Rated Temperature Reading Resolution	0.1°C (0.2°F) for measurements -80°C to 10°C (-112°F to 50°F) 0.2°C (0.4°F) for measurements 10°C to 20°C (50°F to 68°F) and -90°C to -80°C (-130°F to -112°F) 0.3°C (0.5°F) for measurements 20°C to 30°C (68°F to 86°F) 0.5°C (0.9°F) for measurements 30°C to 40°C (86°F to 104°F) LogTag® Analyzer currently displays to one decimal place of °C or °F. The native resolution is what is stored in the LogTag®.
Rated Temperature Reading Accuracy	Better than ±0.5°C for -20°C to +10°C (-4°F to 50°F) Better than ±0.7°C for -50°C to -20°C (-58°F to -4°F) and +10°C to +30°C (50°F to 86°F) Better than ±1°C for -80°C to -50°C (-112°F to -58°F) and +30°C to +40°C (86°F to 104°F) Better than ±1.8°C for -90°C to -80°C (-130°F to -112°F)
Probe Connectivity	Up to 2
Probe Compatibility	All ST100 precision thermistor external probes can be interchangeably connected to the UTREL30-WiFi. Please refer to the page for External Probes on the LogTag® North America website.
Recording Capacity	16,129 temperature readings. 67 days at 6 minute logging. Day summary statistics memory (for display on LCD): up to 30 days of Min/Max/duration and alarm trigger statistics.
Sensor Reaction Time	Typically less than 2 minutes(T90) in moving air (1m/s) for ST10S type.
Sampling Interval	Configurable from 30 seconds to 18 hours.
Logging Start Options	Push button start (with configurable start delay from 1 minute to 72 hours) or specific date & time.
Download Time	Typically with full memory (16,129 readings) in less than 10 seconds.
Environmental	IP51 (when vertically mounted or hung with USB dust-cap in place).
Calibration	Factory calibrated using NIST equivalent reference equipment. Calibration certificate available on request.
Power Source	5V via micro USB socket or, 2 x 1.5V AAA batteries. CR2032 LiMnO ₂ coin cell (backup logging function only).
Battery Life	Device should normally be powered via USB. AAA batteries provide backup power for up to 2 months.
Connection Interface	USB 2.0 / Micro-USB plug.
WiFi	802.11 b/g/n
Bluetooth®	Bluetooth® V4.2 BR/EDR and Bluetooth LE®
Size	141mm(H) x 72mm(W) x 18mm(T).
Weight	158g with AAA batteries, (134g - excluding probe and AAA batteries).
Case Material	Polycarbonate

The Bluetooth® word mark and logos are registered trademarks owned by Bluetooth SIG, Inc. and any use of such marks by LogTag® North America Inc. is under license. Other trademarks and trade names are those of their respective owners.



Connection Software

Real-time data automatically uploaded via WiFi to the LogTag® Online cloud.

