

# Plug-In Modules Dedicated to LR8450 (-01) Memory HiLogger

## Instruction Manual

EN

Dec. 2021 Revised edition 2

U8550A960-02 21-12H

# HIOKI

### HEADQUARTERS

@

2103 EN

Edited and published by HIOKI E.E. CORPORATION

Printed in Japan

- CE declarations of conformity can be downloaded from our website.
- Contents subject to change without notice.
- This document contains copyrighted content.
- It is prohibited to copy, reproduce, or modify the content of this document without permission.
- Company names, product names, etc. mentioned in this document are trademarks or registered trademarks of their respective companies.

### Warranty Certificate

# HIOKI

Model	Serial number	Warranty period
		Three (3) years from date of purchase ( ____ / ____ )

Customer name: \_\_\_\_\_

Customer address: \_\_\_\_\_

**Important**

- Please retain this warranty certificate. Duplicates cannot be reissued.
- Complete the certificate with the model number, serial number, and date of purchase, along with your name and address. The personal information you provide on this form will only be used to provide repair service and information about Hioki products and services.

This document certifies that the product has been inspected and verified to conform to Hioki's standards. Please contact the place of purchase in the event of a malfunction and provide this document, in which case Hioki will repair or replace the product subject to the warranty terms described below.

**Warranty terms**

1. The product is guaranteed to operate properly during the warranty period (three [3] years from the date of purchase). If the date of purchase is unknown, the warranty period is defined as three (3) years from the date (month and year) of manufacture (as indicated by the first four digits of the serial number in YYYYMM format).
2. If the product came with an AC adapter, the adapter is warranted for one (1) year from the date of purchase.
3. The accuracy of measured values and other data generated by the product is guaranteed as described in the product specifications.
4. In the event that the product or AC adapter malfunctions during its respective warranty period due to a defect of workmanship or materials, Hioki will repair or replace the product or AC adapter free of charge.
5. The following malfunctions and issues are not covered by the warranty and as such are not subject to free repair or replacement:
  - 1. Malfunctions or damage of consumables, parts with a defined service life, etc.
  - 2. Malfunctions or damage of connectors, cables, etc.
  - 3. Malfunctions or damage caused by shipment, dropping, relocation, etc., after purchase of the product
  - 4. Malfunctions or damage caused by inappropriate handling that violates information found in the instruction manual or on precautionary labeling on the product itself
  - 5. Malfunctions or damage caused by a failure to perform maintenance or inspections as required by law or recommended in the instruction manual
  - 6. Malfunctions or damage caused by fire, storms or flooding, earthquakes, lightning, power anomalies (involving voltage, frequency, etc.), war or unrest, contamination with radiation, or other acts of God
  - 7. Damage that is limited to the product's appearance (cosmetic blemishes, deformation of enclosure shape, fading of color, etc.)
  - 8. Other malfunctions or damage for which Hioki is not responsible
6. The warranty will be considered invalidated in the following circumstances, in which case Hioki will be unable to perform service such as repair or calibration:
  - 1. If the product has been repaired or modified by a company, entity, or individual other than Hioki
  - 2. If the product has been embedded in another piece of equipment for use in a special application (aerospace, nuclear power, medical use, vehicle control, etc.) without Hioki's having received prior notice
7. If you experience a loss caused by use of the product and Hioki determines that it is responsible for the underlying issue, Hioki will provide compensation in an amount not to exceed the purchase price, with the following exceptions:
  - 1. Secondary damage arising from damage to a measured device or component that was caused by use of the product
  - 2. Damage arising from measurement results provided by the product
  - 3. Damage to a device other than the product that was sustained when connecting the device to the product (including via network connections)
8. Hioki reserves the right to decline to perform repair, calibration, or other service for products for which a certain amount of time has passed since their manufacture, products whose parts have been discontinued, and products that cannot be repaired due to unforeseen circumstances.

HIOKI E.E. CORPORATION

18-07 EN-3

## Model names

Six different types of built-in modules are available for the LR8450 (-01).

U8550	Voltage/Temp Unit
U8551	Universal Unit
U8552	Voltage/Temp Unit
U8553	High Speed Voltage Unit
U8554	Strain Unit
U8555	CAN Unit

## Introduction

Thank you for choosing the U8550/U8551/U8552/U8553/U8554/U8555, built-in modules dedicated to Hioki LR8450/LR8450-01 Memory HiLogger. The built-in modules can be connected to the LR8450/LR8450-01. For information, such as operating precautions and safety, see LR8450 Quick Start Manual.

## Latest instruction manual

The contents of this manual are subject to change, for example as a result of product improvements or changes to specifications. The latest edition can be downloaded from [t/](#)

## Safety notations

This manual classifies seriousness of risks and hazard levels as described below.



### WARNING

Indicates a potentially hazardous situation that, if not avoided, could result in death or serious injury to the operator.

### IMPORTANT

Indicates information or content that is particularly important from the standpoint of operating or maintaining the device.

## Package Contents

- ☐ U8550 Voltage/Temp Unit
- ☐ U8551 Universal Unit
- ☐ U8552 Voltage/Temp Unit
- ☐ U8553 High Speed Voltage Unit
- ☐ U8554 Strain Unit
- ☐ U8555 CAN Unit ..... any one of them
- ☐ Screw M3×35 mm (spare) ..... 2
- ☐ Connection confirmation label (U8554 only) ..... 1
- ☐ Instruction Manual (this manual) ..... 1

# Connecting the Module to the Instrument

Connect the built-in module to the instrument (LR8450/LR8450-01).

You can connect up to four modules to one LR8450 (-01).

## ! WARNING

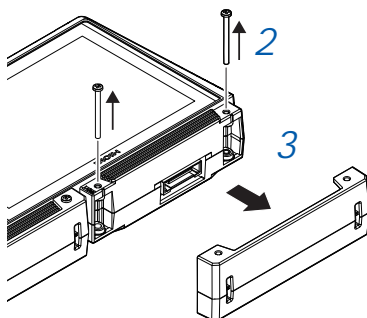
- Turn off the instrument and disconnect any cables before connecting or removing any plug-in modules.

- ! ■ When not using a plug-in module slot, secure the connector cover over the instrument's module connector with the screws.

Failure to do so could cause electric shock or damage the plug-in module and the LR8450 (-01).

You will need: A Phillip's head screwdriver (No. 2)

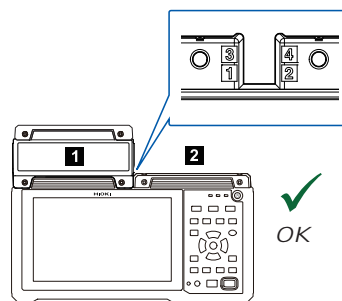
- 1 Turn off the LR8450 (-01) and disconnect the AC Adapter.
  - 2 Remove the two screws from the connector cover of the LR8450 (-01).
  - 3 Remove the connector cover.
- Store the connector cover removed from the LR8450 (-01) for future use.



- 4 Connect the plug-in module to the connector on the LR8450 (-01).

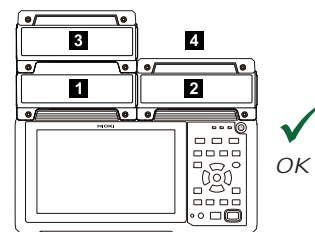
If installing multiple plug-in modules on the LR8450 (-01), do so in the order indicated in the diagram below. Do not remove the connector covers for any plug-in module slots not in use.

When connecting 1 plug-in module



Connect the module to slot 1 or 2.

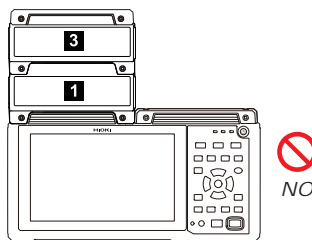
When connecting 3 plug-in modules



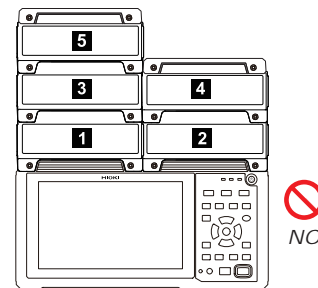
Connect the modules to slots 1, 2, and 3 or slots 1, 2, and 4.

Connecting plug-in units as shown below will cause an error to be displayed on the screen.

When connecting 2 or more plug-in modules on one side



When connecting 5 or more plug-in modules



## IMPORTANT

Plug-in modules ship with two spare screws (M3 × 35 mm). Exercise care not to lose them.

- 5 Insert and tighten the two screws removed in step 2.

