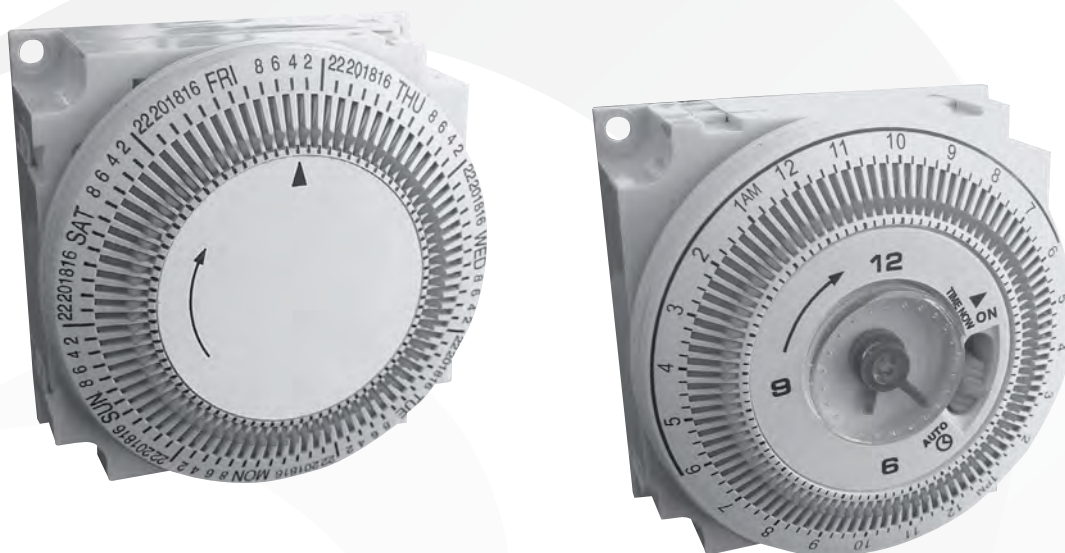


TM Series

Electromechanical Timer Modules for OEM Applications

24-Hour, 7-Day



Features

The TM series of OEM time switches are designed for control of heating, ventilating, air conditioning, refrigeration, lighting, security, circulating pumps, spas or any electrical load requiring 24-hour or 7-day scheduling. The small and contemporary design, in conjunction with the broad range of controls with identical dimensions, provides flexibility and interchangeability for any time switch requirement.

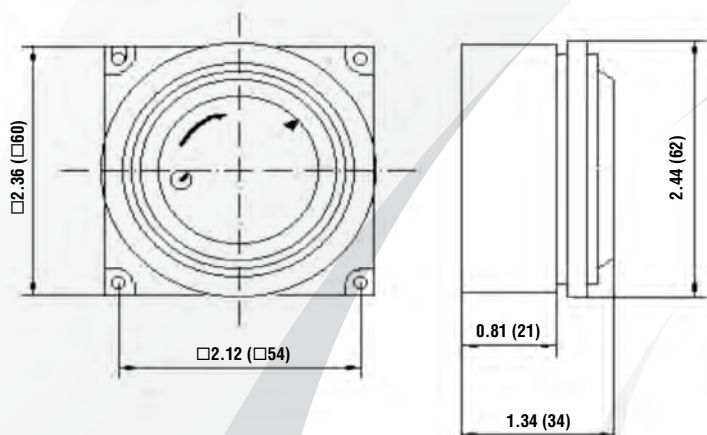
| Ordering Data TM Series Specify Input Voltage | Operating Features | | | | | | |
|--|--------------------|---------|-------------------------|----------------------------|--------|----------|--------------------|
| | Switch Program | Reserve | Program On/Off Every | Shortest Switching Time | Switch | | Manual Override |
| | | | | | Type | Rating | |
| TM1S/3* | 24 hr. | No | 15 min. | 15 min. | SPDT | 15A res. | on/off/auto |
| TM1Q/3* | 24 hr. | 36 hr. | 15 min. | 15 min. | SPDT | 20A res. | on/off/auto |
| TM18Q | 24 hr. | 36 hr. | 15 min. | 15 min. | SPDT | 20A res. | No |

S=Synchronous Drive; Q=Quartz Drive; *Units with Authentic Clock Face

Technical Specification:

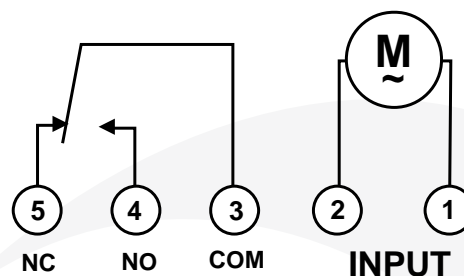
| | |
|-----------------------------------|---|
| Supply Voltage: | 24, 120, 240VAC |
| Switch Rating: | SPDT |
| <i>Resistive:</i> | 15A or 20A |
| <i>Tungsten:</i> | 1250W or 1500W |
| <i>HP@125VAC:</i> | 1/2 or 1 HP |
| Power Consumption: | 1VA |
| Installation: | Surface Mounting Flush Mounting with Stand-offs |
| Ambient Temperature Range: | -4°F to 128°F |
| Trippers: | Captive |
| Terminals: | 1/4" Spade |
| Weight: | Approximately 3 oz. |
| Certification | CE, UL & cUL listed |

Dimensions



Wiring Diagram

Contacts shown in "Off" position (trippers pushed inward)
"On" position (trippers pushed outward) will close contacts 3 & 4



Part Numbers

TM18Q/120VAC/50-60HZ
TM1S/3/120VAC/60HZ

Elemtech TMR W/ Quartz Drive, 36 HR B/BU
Elemtech TMR W/ Sync Drive, 120VAC, 60HZ

