



TREND NETWORKS

# More than a qualifier



NOW WITH  
TOUCHSCREEN



# SignalTEK NT

Copper and Fibre Network Transmission Tester

Find Quality Products Online at:

[www.GlobalTestSupply.com](http://www.GlobalTestSupply.com)

[sales@GlobalTestSupply.com](mailto:sales@GlobalTestSupply.com)

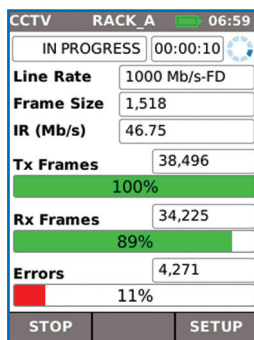
Depend On Us

# SignalTEK NT

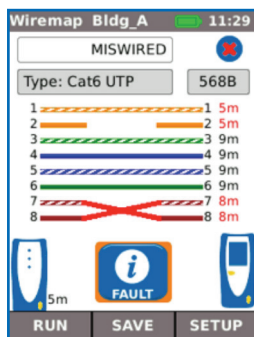
## Network Transmission Tester More than a qualifier



No calibration required plus replaceable RJ45 contacts



CCTV video fail - 11% data loss



Wiremap test displaying open and short

If you install, maintain or troubleshoot data cabling and Ethernet networks, SignalTEK NT allows you to prove the performance up to Gigabit Ethernet transmission rates.

By simulating actual network traffic users are able to test and document network and data cable performance to Gigabit Ethernet standards.

Where system warranties are not required the SignalTEK NT is a cost effective way of proving your copper and fibre networks provide error-free performance.

## Transmission testing proves real performance

There is no industry standard defining the testing requirements of cable qualifiers, consequently passing a qualification test does not prove that the installed structured cabling will provide flawless data transmission.

Uniquely, SignalTEK NT utilises a test method known in wide area networks as transmission testing to prove the performance of a network by sending real Ethernet data frames through the cabling and/or network devices to compare the error rate against the IEEE802.3ab Gigabit Ethernet standard. This provides a clear standards based Pass/Fail of the link being tested.

SignalTEK NT requires no configuration from the user as the two handsets automatically pair ready for testing; just select a usage scenario to simulate the appropriate service, from VoIP to CCTV, Video, and web traffic.

## Installation testing

### Cabling:

- Network traffic performance test on copper and fibre to IEEE802.3ab standard
- Wiremap test for open, shorts, miswires and split pairs to TIA-568 standard
- Gigabit link verification for copper and fibre cabling
- Use a list of wiremap templates for common Ethernet cable types including CAT 6A/7A/8, and non-Ethernet cable, such as Profinet and ISDN.

### Active network:

- Network load testing through switches simulating CCTV/IPTV/VoIP/Web traffic
- PoE/PoE+ verification that displays available voltage at device location
- Check Ethernet connectivity at device location to 10/100/1000 Mb/s
- Verify network configuration (device IP/gateway address/subnet mask)
- Switch port identification via LLDP/CDP protocols

## Troubleshooting/diagnostics

### Cabling:

- Distance to fault using TDR technology (copper only)
- Ability to identify and trace cables with a compatible amplifier probe (62-164)
- Optical power indication (with compatible SFP modules)

### Active network:

- Network load testing through switches simulating CCTV/IPTV/VoIP/Web traffic
- Stress test network before installing bandwidth hungry devices
- Port blink to visually trace cable from work area outlet to network switch
- Displays port ID of LLDP/CDP enabled switches to eliminate manual cable tracing
- Identify network connection problems as hardware, network or configuration faults
- Ping local network devices and Internet URL's
- Count number of hops between network points with traceroute tests
- PoE load testing to confirm available power meets PoE device requirements

Send test reports from anywhere using the free app



**TREND**  
AnyWARE<sup>®</sup>  
APP



## Step 1

### Test

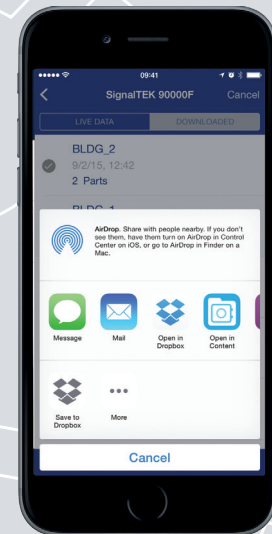
- Create job folder
- Enter job site information
- Perform autotest on copper/fibre cabling and copper/fibre networks



## Step 2

### Connect

- Activate SignalTEK NT wireless hotspot
- Connect your mobile phone or tablet with the TREND AnyWARE App
- Transfer test reports to your mobile device
- View test reports



## Step 3

### Send

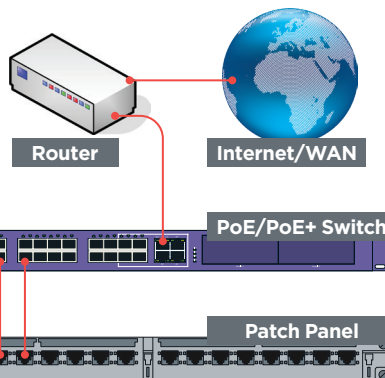
- Select reports (PDF or CSV) to send
- Select preferred transfer method - email, ftp, cloud storage etc.
- Send file
- Alternatively save test reports to USB key

Download the FREE App today



### Network Performance Test

- Port speed 10/100/1000
- PoE/PoE+ detection
- Web data performance
- IP video performance
- IP CCTV performance
- VoIP performance



### Cable Performance Test

- TDR wiremap
- IEEE 802.3ab Gigabit data
- Custom wiremap for non-Ethernet cabling such as Profinet



### Network diagnostics & troubleshooting

- Network speed 10/100/1000
- Network IP/DHCP configuration
- CDP/LLDP port identification
- PoE/PoE+ detection/load test
- Ping/trace route
- Blink switch link LED



Network performance remote



Cable performance remote



IP Phone



Wireless AP



IP Camera

Find Quality Products Online at:

[www.GlobalTestSupply.com](http://www.GlobalTestSupply.com)

[sales@GlobalTestSupply.com](mailto:sales@GlobalTestSupply.com)

Depend On Us

# SignalTEK NT

## Network Transmission Tester

### More than a qualifier

### Test Reporting

SignalTEK NT automatically generates test reports in PDF or CSV format.

The summary page of each report can be customised to include logo, company and operator details. Choose between 3 different reports that can show either passed, failed or all test reports in each report:

- Summary
- Brief
- Full (see example on the right side)

### Ordering Information

Part No.	Kit Contents
R156005	<b>SignalTEK NT – Network Transmission Tester.</b> Includes 1 x display with touchscreen, 1 x remote, 2 x NiMH batteries, 2 x patch cables - 30cm, Cat 5e STP, 2 x power supply with EU/UK/US adapters, 1 x USB Wi-Fi adapter, 1 x quick reference guide, 1 x carry case

For the copper only version without network troubleshooting, please check out our SignalTEK CT

### Optional Accessories

Part No.	Description
MGKSX1	1 x 1000BASE-SX Fibre kit*. Includes 850nm SFP (Small Form factor Pluggable) SX transceiver, LC/LC and LC/SC duplex multimode cables and SC/SC duplex adapter
MGKLX2	1 x 1000BASE-LX Fibre kit*. Includes 1310nm SFP (Small Form factor Pluggable) LX transceiver, LC/LC and LC/SC duplex singlemode cables and SC/SC duplex adapter
MGKZX3	1x 1000BASE-ZX Fibre kit*. Includes 1550nm SFP (Small Form factor Pluggable) ZX transceiver, LC/LC and LC/SC duplex singlemode cables and SC/SC duplex adapter
62-164	1 x TREND amplifier probe
150058	1 x RJ45 insert extraction tool, 10 x lifejack RJ45 inserts

For replacement accessories, please visit our website.  
\*2 required for Gigabit transmission testing.

### Basic Specifications

Max. No. of Jobs	Max. No. of Stored Test	Max. Length	Battery Life	Dimensions per handset in mm	Weight per handset
50	5000	181 m/593 ft.	5 hours	175 x 80 x 40	0.4 kg

For detailed specifications, please visit our website.



TREND NETWORKS

SignalTEK NT Test Report

Job Name: CAMFUS\_A  
Date Tested: July 20 2015  
Time Tested: 10:53  
Info 1: 1st party unit  
Info 2: City  
Info 3: building 5  
Info 4: FL 7  
Info 5: CAB 3  
Info 6: DDF 4  
Info 7: ROW 14  
Info 8: PORT 23

Owner: Tester  
Company:  
Address 1: Stokenchurch  
Address 2:  
City: High Wycombe  
State:  
Zip: HP14 3SX  
Country: UK  
Phone1:  
Phone2:

EIN: 021656-084157

EIN: 021656-084157

PSE 54V  
Port 1 2

FAIL  
test0001

Port	Setup	Results
Auto	1245	
Line Rate	1000 Mb/s	
Duplex	Full Duplex	
IPv4	Disabled	
IPv6	Disabled	
Skew (ns)	192.568.1.8	

1.2 3.6 4.5 7.8

Skew (ns)

VoIP Data	Setup	Results
No. of Calls (Frames)	0	0
Info Rate (Mbps)	0	0
Frame Size	718	0

Web Data	Setup	Results
No. of Sessions (Frames)	0	0
Info Rate (Mbps)	0	0
Frame Size	1,538	0

Video Data	Setup	Results
No. of Streams (Frames)	0	0
Info Rate (Mbps)	0	0
Frame Size	1,538	0

CCIV Data	Setup	Results
No. of Cameras (Frames)	0	0
Info Rate (Mbps)	0	0
Frame Size	1,538	0

PoE Load	Min. Pwr (W)	Max. Pwr (W)
Pair 1	0	0

Netscan	Host Address	Scan Range
IPv4	172.168.1.1	Class C/24

Ping	Destination Address	Frame Length (Bytes)	Frames (s)	Rx (Frames)	Rx (Mbps)	Avg RTT (ms)	Max RTT (ms)
IPv4	www.google.com	1500	64	0	0	0	0

Trace Route	Destination Address	Max Hop	Timeout (s)	Total Time (s)	Time 1 (s)	Time 2 (s)	Time 3 (s)
IPv4	www.yahoo.com	30	3	0	0	0	0

Created: July 21 2015 14:43

TREND NETWORKS

Page 2 of 33