

Reveal

THERMAL IMAGING CAMERA
BUILT FOR THE FIELD

KEY CAMERA SPECS

- 206 x 156 Thermal Sensor
- 36° Field of View
- 40°F to 626°F Detection Range
- 500 ft Distance
- Works Day & Night
- 300 Lumen LED Flashlight

seek[™]
thermal



With powerful thermal technology and rugged design, the standalone Seek Reveal handheld thermal imager combines a 206x156 sensor, a rechargeable battery that lasts more than 10 hours, and a large color display into an all-in-one durable device. Reveal's advanced technology lets you see thermal images day or night so you can see sources of heat even in an unlit room or crawl space. And when you need it, Reveal's powerful 300-lumen LED light makes sure you can see all around you, wherever you are. You can count on its durable, rubberized casing and intuitive controls to go to work where you do.

Product Name:	Seek Reveal
Available Date:	October 2015
Product Type:	Thermal Imaging Camera
Seek Reveal Color: Blue	UPC: 855753005570 Part Number: RW-AAAX
Export Regulations	Subject to US Export Regulations

Single Unit	
Included in the box:	<ul style="list-style-type: none">• Seek Reveal• Wrist Lanyard• Welcome Guide• MicroSD Card & USB Cable
Device Dimensions (H x W x D)	5 x 2.4 x 1.2 inches
Device Weight:	6.25 ounces
Box Dimensions (H x W x D)	6.25 x 3.75 x 3.25 inches
Box Weight:	18.5 ounces
Master Pack	
Included in the Master Pack	50 Units
Master Pack Dimensions	20 x 15 x 18 inches
Master Pack Weight	58 pounds

KEY FEATURES

Easy-to-Use Indoor Versatility

Wide, 36° field of view quickly scans the inside of any room

High-Performance Thermal Sensor

206 x 156 thermal sensor accurately identifies heat signatures

Best-in-Class Temperature Range

Measure temperatures from -40° to 626°F (-40° to 330°C)

Long-Lasting Rechargeable Battery

Up to 10 hours of continuous thermal imaging on a single charge

See Through the Dark. Light Optional.

300 lumen LED flashlight available at the touch of a button

Intuitive Software

Continuous feature enhancements keep innovation at your fingertips

BENEFITS & USES

Durable, All-In-One Device

Rugged, rubberized casing and intuitive controls to go and work where you do

Easily Monitor Home and Building Efficiency

Quickly spot energy loss and HVAC issues

Accurately Inspect Mechanical and Electrical Equipment

Diagnose and assess the problem source quickly

Time of Day Won't Slow You Down

Safely examine any job site in daylight or total darkness

Keep An Eye on Things—Even Those You Can't See

It's a lot easier to stay safe when you can see in the dark






Document Your Thermal Discoveries

Save thermal images directly to the included MicroSD card

TECHNICAL SUMMARY

SPECIFICATIONS	DESCRIPTION
Thermal Sensor	206 x 156
Detection Distance	500 Feet (165 Yards, 150 Meters)
Field of View	36 Degree FOV
Temperature Range	-40°F to 626°F (-40°C to 330°C)
Frame Rate	> 15 Hz FastFrame
Flashlight	300 Lumen LED
Focus	Fixed Focus
Lens Material	Chalcogenide
Microbolometer	Vanadium Oxide
Pixel Pitch	12 Microns
Spectral Range	7.5 - 14 Microns
User Interface	Self-Contained Device with 3 Button Navigation
Temp. Display Scale	Fahrenheit or Celsius
Color Palettes	7 Options
Storage Media	MicroSD Card Included
Battery	Up to 10 Hours Continuous Thermal Imaging

KEY SPECIFICATIONS

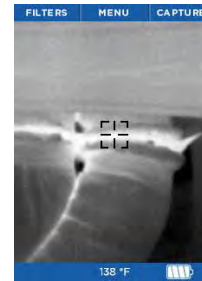
 206 X 156 Thermal Sensor	 36° Field of View	 -40 to 626°F Detection Range	 500 ft Distance	 300 Lumen LED Flashlight
---	--	---	---	--

USER INTERFACE



PHOTOS

Capture and save thermal images directly to the included MicroSD Card



THERMOGRAPHY

Displays a non-contact temperature reading wherever you aim



FLASHLIGHT

High-powered 300 lumen LED light with programmable brightness

BUILT FOR THE FIELD



Life can get pretty dirty. So Reveal can, too. You can count on its rugged, rubberized casing and intuitive controls to go and work where you do—no matter what conditions you face

COMMAND INFRARED AND VISIBLE LIGHT



Seek Reveal combines powerful thermal insight and a high-performance LED flashlight in one durable device.

PRODUCT ASSETS



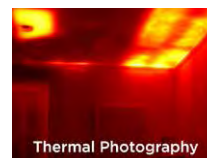
Engaging POP



Product Videos



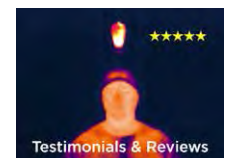
Instructional Videos



Thermal Photography



Product Photography



Testimonials & Reviews