

**BUILT FOR HIGH-PERFORMANCE.
FASTFRAME IMAGING ON-THE-GO.**

KEY CAMERA SPECS

- 206 x 156 Thermal Sensor
- 20° Field of View
- 40°F to 626°F Detection Range
- 900 ft Distance
- Works Day & Night
- 300 Lumen LED Flashlight

Seek
thermal



Available in TrueTimber® Kanati Camouflage and Pure Black

The RevealXR FastFrame combines all the features of the RevealXR, with the added benefit of faster imaging speeds that help reduce motion blur while scanning or on the go. With a frame rate greater than 15 frames per second, RevealXR FastFrame is ideal for fast-motion applications. Its 206x156 thermal sensor and powerful 300-Lumen LED flashlight let you command both infrared and visible light at a moment's notice. The intuitive single-handed interface and button control make it ideal for security, safety surveillance, and hunting in both light and dark conditions. Its fixed focus narrows in at distances up to 900 feet. The RevealXR FastFrame combines powerful technology, rugged design, smooth scrolling imagery and long-lasting 10 hour battery life to provide thermal insight whenever you need, wherever you are.

Product Name:	Seek RevealXR FastFrame
Available Date:	March 2016
Product Type:	Thermal Imaging Camera
RevealXR FastFrame Color: Pure Black	UPC: 855753005587 Part Number: RT-ABAX
RevealXR FastFrame Color: TrueTimber® Kanati Camouflage	UPC: 855753005594 Part Number: RT-ACAX
Export Regulations	Subject to US EAR Export Regulations

Single Unit	
Included in the box:	<ul style="list-style-type: none"> Seek RevealXR FastFrame Wrist Lanyard Welcome Guide MicroSD Card & USB Cable
Device Dimensions (H x W x D)	5 x 2.4 x 1.2 inches
Device Weight:	6.25 ounces
Box Dimensions (H x W x D)	6.25 x 3.75 x 3.25 inches
Box Weight:	18.5 ounces
Master Pack	
Included in the Master Pack	50 Units
Master Pack Dimensions	20 x 15 x 18 inches
Master Pack Weight	58 pounds

KEY FEATURES

Built for Long-Range Detection

Narrow, 20° field of view quickly scans up to 900 ft (275 meters)

High-Performance Thermal Sensor

206 x 156 thermal sensor accurately identifies heat signatures

Smooth Viewing with FastFrame

FastFrame provides incredible thermal processing speed to ensure images display smoothly and efficiently while moving or scanning

Best-in-Class Temperature Range

Measure temperatures from -40° to 626°F (-40° to 330°C)

Long-Lasting Rechargeable Battery

Up to 10 hours of continuous thermal imaging on a single charge

See Through the Dark. Light Optional.

300 lumen LED flashlight available at the touch of a button

BENEFITS & USES

Durable, All-In-One Device

Rugged, rubberized casing and intuitive controls to go and work where you do

Keep An Eye on Things—Even Those You Can't See

It's a lot easier to stay safe when you can see in the dark

Quickly and Accurately Scout Terrain

Day or night, camouflage won't hide a heat signature

Never Lose an Animal

Easily recover and rescue animals

Safeguard Buildings, Land, and Borders

Military-proven surveillance technology that fits in your pocket

Document Your Thermal Discoveries

Save thermal images directly to the included MicroSD card

TECHNICAL SUMMARY

SPECIFICATIONS	DESCRIPTION
Thermal Sensor	206 x 156
Detection Distance	900 Feet (300 Yards, 275 Meters)
Field of View	20 Degree FOV
Temperature Range	-40°F to 626°F (-40°C to 330°C)
Frame Rate	>15 Hz FastFrame
Flashlight	300 Lumen LED
Focus	Fixed Focus
Lens Material	Chalcogenide
Microbolometer	Vanadium Oxide
Pixel Pitch	12 Microns
Spectral Range	7.5 - 14 Microns
User Interface	Self-Contained Device with 3 Button Navigation
Temp. Display Scale	Fahrenheit or Celsius
Color Palettes	7 Options
Storage Media	MicroSD Card Included
Battery	Up to 10 Hours Continuous Thermal Imaging

KEY SPECIFICATIONS



206 X 156
Thermal
Sensor



20°
Field
of View



-40 to 626°F
Detection
Range



900 ft
Distance



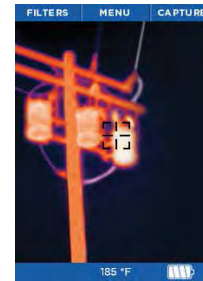
300 Lumen
LED Flashlight

USER INTERFACE



PHOTOS

Capture and save thermal images directly to the included MicroSD Card



THERMOGRAPHY

Displays a non-contact temperature reading wherever you aim



FLASHLIGHT

High-powered 300 lumen LED light with programmable brightness

BUILT FOR THE OUTDOORS



Life can get pretty dirty. So RevealXR FastFrame can, too. You can count on its rugged, rubberized casing and intuitive controls to go and work where you do—no matter what conditions you face

COMMAND INFRARED AND VISIBLE LIGHT

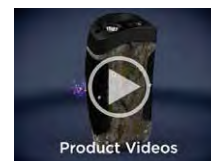


Seek RevealXR FastFrame combines powerful thermal insight and a high-performance LED flashlight in one durable device.

PRODUCT ASSETS



Engaging POP



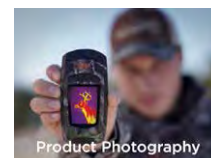
Product Videos



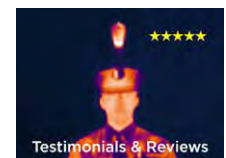
Instructional Videos



Thermal Photography



Product Photography



Testimonials & Reviews