


Reveal™ 300

**DURABLE. RELIABLE. SAFE.
SEE THE UNSEEN.**

KEY CAMERA SPECS

	Resolution	320 x 240
	Field of View	18° x 24°
	Durability	IP67 rating, 2 meter drop
	Detection	-20°C to 550°C (-4°F to 1022°F)
	Imaging	Center Spot, Basic, and Survey Mode
	Flashlight	300 Lumen LED

Seek
thermal

thermal.com



Part Number: **RQ-9AAX**

Introducing Reveal 300, the robust handheld thermal camera for industrial inspections, search and rescue, nighttime navigation, and general safety. Equipped with a high-resolution thermal camera, Reveal 300 makes it easy to scan large areas, locate people and animals, examine motors, detect leaks, and navigate in complete darkness.

Featuring a 320x240 thermal sensor and a 300-lumen LED flashlight, this compact, lightweight device (5.1" x 3" x 1.8", 325 grams) delivers exceptional performance. Built for tough environments with an IP67 rating and 2-meter drop resistance, it offers up to 6 hours of battery life, or 3.5 hours with the flashlight, ensuring reliability in maintaining industrial safety and efficiency.



**Designed and Manufactured in the USA
with Global Components.**

KEY FEATURES

320 x 240 Thermal Sensor with SV1

76,800 temperature pixels with Seek's SV1 Image Optimization delivers higher detail, better contrast, and more edge clarity.

Mixed Gain Mode

Observe high and low temperatures simultaneously with low noise and maximum image clarity.

IP67 Rated For Harsh Environments

Ruggedized housing can withstand a 2 meter drop onto concrete.

Over 6 hours of use on a single charge

Long lasting rechargeable battery ensures Reveal 300 is always ready.

BENEFITS

Search and Rescue

Seek's Thermal 320x240 camera with 18° lens allows for quick scans over large areas to find lost hikers, look for people who have fallen overboard, and navigate in complete darkness.

Maintenance Inspection

Seek's Center Spot mode gives accurate temperature measurements of parts, motors, belts, machinery, and more.

Early Fire Detection

Seek's Survey Mode is ideal for spotting early signs of thermal runaway that occurs in batteries and early signs of fire detection.

Locate Animals with Ease

Even the most illusive animals cannot hide their heat signature.

Find Quality Products Online at:

www.GlobalTestSupply.com

sales@GlobalTestSupply.com

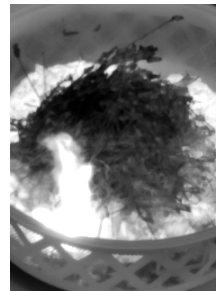
TECHNICAL SUMMARY

SPECIFICATIONS	REVEAL 300
Thermal Sensor	320 x 240
Field of View	18° HFOV x 24° VFOV
Protective Sensor Window	Yes
Video Recording	Yes
Image Capture	Yes
Temperature Range	-4°F to 1,022°F (-20°C to 550°C)
Operating Temp	-4°F to 140°F (-20°C to 60°C)
Frame Rate	> 25 Hz FastFrame
IP Rating	IP67 rating for harsh environments
Impact Resistance	2 meter drop onto concrete
Flashlight	300 Lumen LED
Display	2.8" TFT 320 x 240 screen resolution
Thermal Sensitivity	< 35 mK with SV1
Viewing Angle	Ergonomic 90° viewing angle
Imaging Modes	Basic, Center Spot, SURVEY
Size: H x W x D	5.1 x 3 x 1.8 inches (130 x 76 x 46 mm)
Weight	0.7 lbs (325 grams)
Battery Life	6 hours in thermal only 3.5 hours with flashlight on

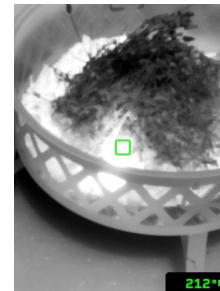
For support and user guides visit thermal.com

IMAGING MODES

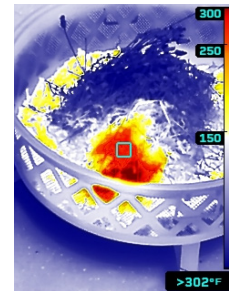
All modes use Mixed Gain with SV1 Image Optimization



BASIC
(No Spot Temp)



CENTER SPOT
(With Spot Temp)



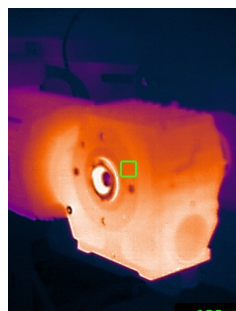
SURVEY
(With Spot Temp)



WHAT'S IN THE BOX

- Reveal 300 camera
- Charging dock with retaining strap
- USB-C to USB-A cable

SAMPLE IMAGES



6300 Hollister Ave, Santa Barbara, CA 93117

Seek Thermal engineers, designs and manufacturers high quality thermal imaging products and core platforms for consumer, commercial, and heat sensing IoT data applications. With headquarters in Santa Barbara, California, the global hub of thermal imaging innovation, the company has developed breakthrough thermal imaging camera cores that will enable a range of affordable products for use at home, work and play. For more information visit thermal.com and follow #seekthermal on Instagram and @seekthermal on Twitter.

Specifications and undocumented specifications are subject to change without notice.