

SPECTROLINE®

On-Trak™

Blue Light LED Inspection System

(U.S. and foreign patents pending)

The **ONT-450 On-Trak™** is an innovative, modular, track light-style inspection system. It features four broad-beam lamps, each of which utilizes three powerful, blue light (450 nm) LEDs. This overhead lighting system provides a fast, safe and effective alternative to UV-A light. It allows inspectors to customize lamp beam patterns to suit their individual needs, and provides the ability to add two additional lamp head assemblies to further increase the coverage area. Perfect for NDT inspection booths, pre-inspections and screening of fluorescent particles in operating conditions with ambient light or any application requiring maximum uniformity of coverage over large areas.



Features:

- ✓ Powerful, cool running, energy-efficient blue light LEDs with 100,000-hour service life
- ✓ Broad-beam profiles provide wide coverage area
- ✓ Electronic Intensity Stabilizers ensure consistent LED performance
- ✓ Instant-on operation; lamps reach full intensity immediately
- ✓ Built-in fans keep LEDs cool to maintain optimum light output during extended use
- ✓ Rubber bumpers with patented thin-film dichroic lenses filter out long-wave visible light while preventing damage to the LEDs
- ✓ Easily customizable! Move, adjust and add up to two additional lamp heads according to your specific inspection requirements (additional lamp heads sold separately)
- ✓ Optional remote control with two-position rocker switch provides added convenience and versatility
- ✓ Comes complete with UVS-40 fluorescence-enhancing spectacles

**SPECTRONICS
CORPORATION**

**ISO 9001:2008
CERTIFIED COMPANY**

Find Quality Products Online at:

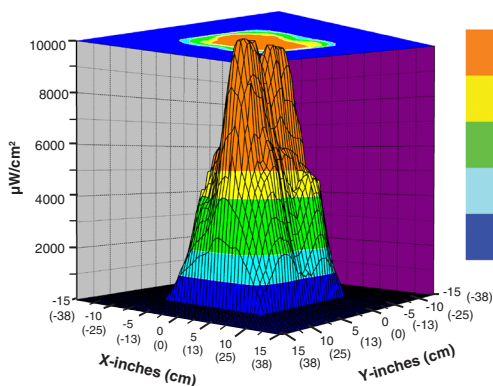
www.GlobalTestSupply.com

sales@GlobalTestSupply.com

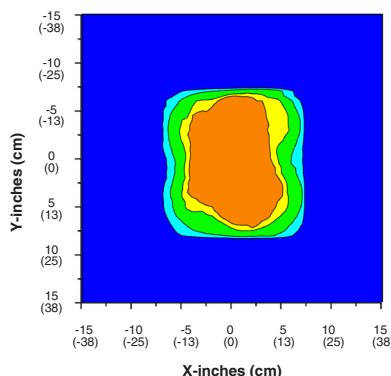
On-Trak™

Blue Light LED Inspection System

The **ONT-450 On-Trak™** is a customizable, modular, track light-style overhead inspection system attached to a mountable platform. It features four broad-beam LED lamp assemblies, each with three high-intensity blue light (450 nm) LEDs. This versatile lighting system provides safe and effective flood light coverage and is perfect for quick NDT pre-inspections, pre-screenings and a variety of other applications.



Surface Contour Profile at 15 in (38 cm)



Top Intensity Profile at 15 in (38 cm)

SPECIFICATIONS

Product number:
ONT-450

Light sources:
3 blue light LEDs per lamp head

System dimensions: (L x W x H)
28.5 x 18.3 x 11 in (72 x 46 x 28 cm)

Lamp:
Head diameter: 3.25 in (8.3 cm)
Length: 9.5 in (24 cm)

Platform dimensions: (L x W x H)
28.5 x 18.3 x 2.5 in (72 x 46 x 6 cm)

Platform weight: 13 lb (6 kg)

Power supply cord: 8 ft (2.4 m)

Power supply:
Input: 100-240 VAC 50/60 Hz
Output: 12 VDC

Nominal steady-state blue light (450 nm) intensity:

15 in (38 cm) — 9,500 $\mu\text{W}/\text{cm}^2$

24 in (61 cm) — 6,000 $\mu\text{W}/\text{cm}^2$

36 in (91 cm) — 4,500 $\mu\text{W}/\text{cm}^2$

NOTE: Intensity readings taken with a Spectroline® AccuMAX™ Series meter



Optional remote control with two-position rocker switch adds convenience and versatility

Replacement Parts and Accessories

LA-450 Lamp head assembly with three blue light LEDs

PT-200 Platform and track assembly

FP-200 Filter protector with rubber bumper and thin-film dichroic lens

AF-200 Air filter (package of 24)

PS-100A Power supply module

RC-300 AC remote control with 8 foot (2.4 m) cord

UVS-40 Fluorescence-enhancing spectacles