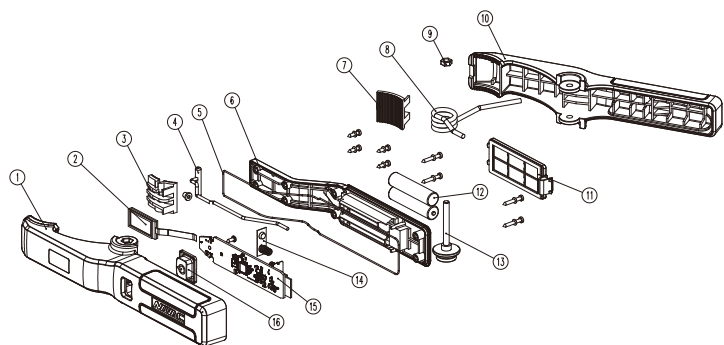


Empowering you to work smarter

NAVAC

Exploded View



Spare Parts List

No.	Description	Qty
1	Master Clamp Handle	1
2	LCD	1
3	Toothed Block	1
4	Temperature Sensor	1
5	O-ring	1
6	Cover	1
7	Toothed Block	1
8	Spring	1
9	Nut	1
10	Sub Clamp Handle	1
11	Battery Cover	1
12	Battery Terminal	2
13	Retaining Stud	1
14	Battery Shrapnel	1
15	PCBA	1
16	Button	1

NAVAC Inc.
www.NavacGlobal.com
Tel/Fax: +1 877 MY-NAVAC
877 696 2822
MADE IN PRC



Compatible with MyNAVAC™ APP

© NAVAC Inc. - All Rights Reserved

NAVAC

Empowering you to work smarter

NST1 NST2 Bluetooth Temperature Clamp w. Digital Display User Manual



Failure to follow warnings could
result in physical injury.

**SAVE THIS MANUAL
FOR FUTURE REFERENCE**

Empowering you to work smarter

NAVAC

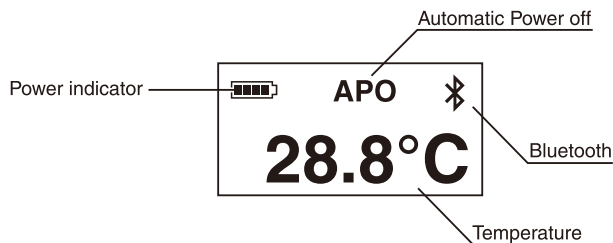
Product Overview



Technical Specification

Model	NST1	NST2
Measurement range	-40~257°F (-40~125°C)	
Accuracy	±2.34°F (±1.3°C)	
Resolution	0.1	
Operating temperature	-40~80°C, 10~90%RH	
Battery	2 x AAA	
Sensor	Pt100(ITS-90)	
Unit Weight	0.35 lbs	

Screen Display



Empowering you to work smarter

NAVAC

Indicator Light

Condition	Indicator Light Display
Power On	Green indicator light stays on continuously
Low Battery Power On	Red indicator light flashes quickly 3 times
Bluetooth Not Connected (Screen Off)	Yellow indicator light flashes slowly
Bluetooth Connected (Screen Off)	Green indicator light flashes slowly
Low Battery or Hardware Failure (Screen Off)	Red indicator light flashes slowly

Alarm

Over range:

- (1) When the measured temperature is greater than 125°C and less than 150°C, the temperature value is displayed in red and the buzzer sounds continuously at a frequency of 0.5S.
- (2) When the measured temperature is less than -40°C or more than 150°C, the display will show "OL" and the buzzer will sound continuously.

Hardware failure:

- (1) When the temperature sensor fails, "ERR.-" is displayed and the buzzer sounds for 1 second.
- (2) When Bluetooth is faulty, the buzzer sounds for 1 second.

Bluetooth Connection

The device will maintain the Bluetooth broadcast status after powering on. If the device is not connected, " * " blinks constantly; If the device is connected, " * " displays continuously.

Automatic Shutdown

When "APO" is turned on, the unit automatically shuts down if no key is pressed for 2 hours.

Key Function

Switch On/Off: Press and hold the key for 2 seconds to turn on the power. To turn off the power, press and hold the key for 3 seconds.

Turn off and light up the screen: In the non-function selection state, press the key to switch between turning off and lighting up the screen.

Function Selection:

- (1) Quickly double-click the button to enter the function setting interface. The setting order is Auto Power Off, Bluetooth Switch, and Temperature Unit.
- (2) Click the button to cycle options.
- (3) Double-click the button to select option.