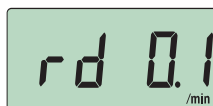
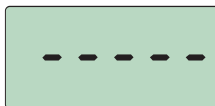




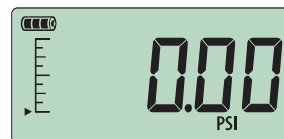
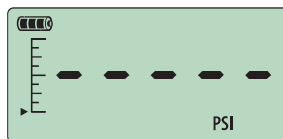
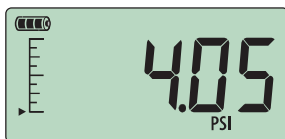
## m1 Quick Reference



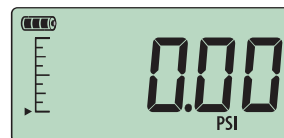
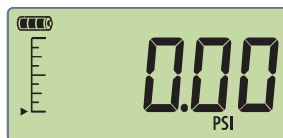
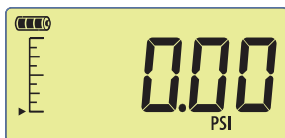
### Power On



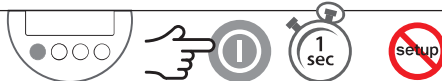
### Zero



### Backlight



### Power Off

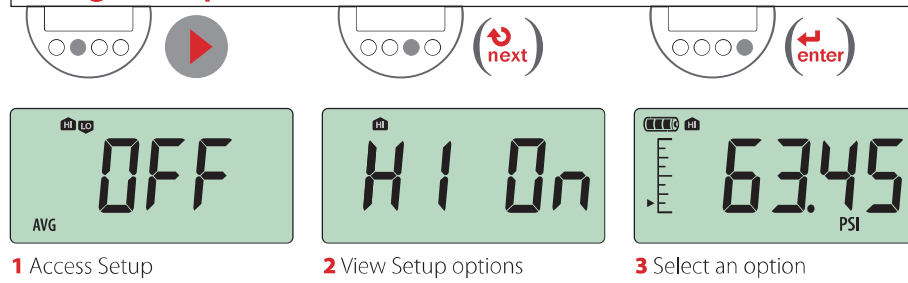


**AMETEK**  
TEST & CALIBRATION INSTRUMENTS

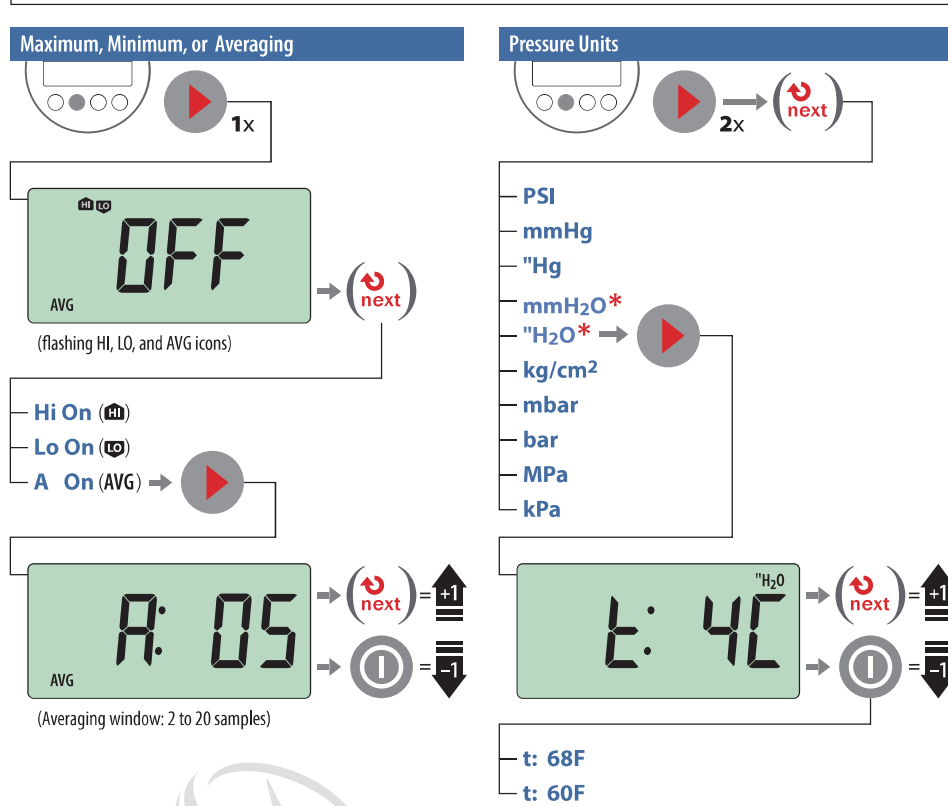
## m1 Quick Reference

**Note:** Pressing the **enter** button always returns the gauge to operating mode. If you want to set multiple Display Functions, press the **setup** button to navigate from one Display Function to the next, then press the **enter** button when you are done.

### Gauge Setup Basics



### Gauge Setup Map



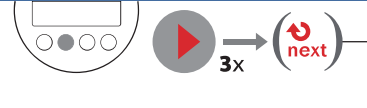
All units are not available with every pressure range.

\* H<sub>2</sub>O icons and temperature settings will only display on H<sub>2</sub>O enabled units.



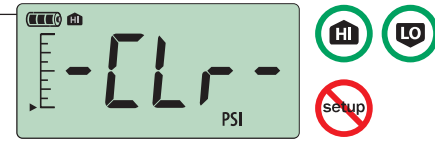
## Gauge Setup Map continued

### Backlight Timer



- **Lt: 15** (light stays on for 15 seconds)
- **Lt: 60** (light stays on for 60 seconds)
- **Lt: On** (light does not turn off automatically)

### To Clear Peaks or Line Pressure



## Troubleshooting

### Err 1 displayed:

The M1 checks the internal calibration every time it's turned on.  
Contact factory for further instructions.

### Err 2 displayed:

The M1 has tried to display a number too large for the display due to electrical malfunction or numerical error.  
Contact factory for further instructions.

### Err 5 or Err 6 displayed:

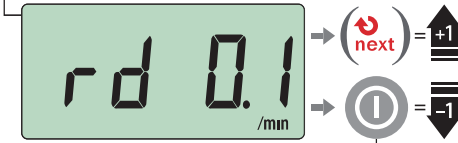
The M1 pressure sensor is exhibiting behavior out of normal operating condition. Contact factory for sensor replacement.

**Note:** If there is no gauge activity for 10 seconds, the gauge will return to operating mode. Any Setup options that you have selected will be enabled.

### Power Management \*



\* This menu can be accessed only when the gauge is off.



### Ultra Low Power Mode

- **rd 0.1** ..... (1/10 minutes ... 30,000 hours)
- **rd 0.2** ..... (1/5 minutes .... 25,000 hours)
- **rd 1.0** ..... (1/1 minute ..... 10,000 hours)
- **rd 2.0** ..... (1/30 seconds... 6,000 hours)
- **rd 4.0** ..... (1/15 seconds... 3,000 hours)
- **Off --\*** ..... (4/1 second ..... 600 hours)
- **Off 1H\*\*** ... (4/1 second ..... 600 hours)

\* At "Power On," this setting is displayed as **No Auto off**

\*\* At "Power On," this setting is displayed as **Auto off 1H**

**Note:** Whenever one of the **rd** settings is selected, the battery icon will change from  to  indicating that the M1 is in Ultra Low Power Mode.



4695.F

