

MEETS STANDARDS FOR



EN ISO:3059

SPECTROLINE®
NDT

EDGE™ 13 SERIES

LED UV-A Penetrant Station Flood Lamp

EDG-13H

Designed specifically for NDT professionals who require a rugged, high-intensity lamp to spot fluorescent indications on large parts. Perfect for use in automotive, fabrication, machining, oil/gas, and more industries!

**IP65
RATED**



**Dust Tight &
Water Resistant**



**NDT Inspection
Booths**



**Screening of
Fluorescent Particles**

FANLESS

Cool running design
that uses state-of-
the-art heat sinks

EASILY MOUNTABLE

For overhead inspection or
in-line applications

FLEXIBLE ARM

For mounting at specific
angles

GANGABLE

Can be ganged together
to provide an even wider
coverage area

LONG-LASTING UV-A LENSES

Virtually eliminate
clouding/solarization

13 UV-A LEDs

Provides large area of coverage
for the largest, most even
overhead beam available



**CERTIFICATE OF
LIGHT OUTPUT**
included with lamp

Find Quality Products Online at:

www.GlobalTestSupply.com

sales@GlobalTestSupply.com

EDGE™ 13 EDG-13H

MODEL	NOMINAL STEADY-STATE UV-A (365 nm) INTENSITY at 15 in (38 cm) ①	VISIBLE LIGHT MEASUREMENT	UV-A COVERAGE AREA (at minimum 1,200 µW/cm²)
EDG-13H	15,000 µW/cm²	< 2 foot-candle (22 lux)	18 x 16 in (46 x 41 cm)

Light Source:	13 UV-A (365 nm) LEDs
Lamp Style:	Panel flood lamp
Length: (L x W x H)	11 x 14 x 9 in (28 x 36 x 23 cm)
Weight:	14 lb (6.4 kg)
Power Requirements:	AC power (main AC power cord supplied with the unit) (Available in 100-120V, 230V and 240V versions)



① UV-A intensity reading taken with the Spectroline® AccuMAX™ Series meter, and are factory set to the values shown.

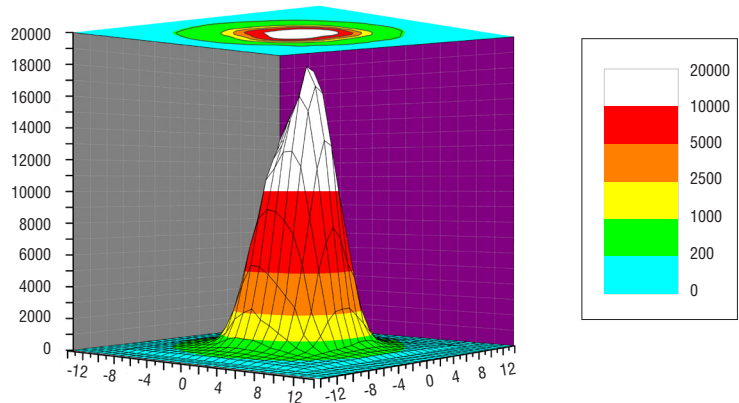
For applications requiring extremely large coverage area, the EDGE™ 13 can be quickly ganged together.

*Optional accessory: ganged cables with connectors (130156)



UV-A Beam Profiles

Surface Contour Profile at 15 in (38 cm)



Top Intensity Profile at 15 in (38 cm)

