



Mastercool® Inc.
"World Class Quality"

ARCTIC COMMANDER 2.0

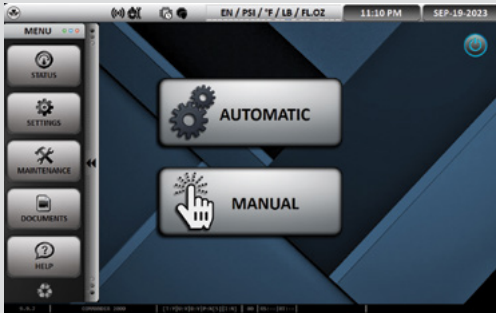
Mastercool's enhanced Arctic Commander 2.0 line of R/R/R machines is the culmination of years of expertise in the industry. Our team of engineers have focused on intuitive design, elevated efficiency, and improved performance to set a higher standard. Experience effortless navigation through detailed function screens with the spacious 10" color touchscreen command center. Through the expansion of internal plumbing and reduction of restrictions, we've achieved remarkable improvements in recovery and charge times. These units will recover 98.5% of the refrigerant in a vehicle which exceeds the SAE standards for purity and is the fastest in the industry.

Don't take our word for it, the Arctic Commander 2.0 has undergone rigorous ETL testing, affirming its position as one of the most precise machines on the market. Official test results demonstrate an astonishing accuracy level, with desired charge and recovery quantities achieved with an impressive 1 gram deviation. Step into the future of R/R/R machines by bidding farewell to outdated models. Replace your aging equipment with the cutting-edge Arctic Commander 2.0 and experience the next level of performance.



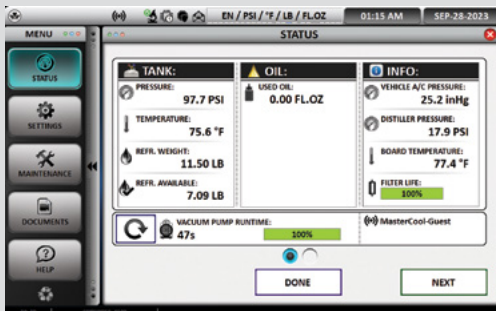
	COMMANDER4100 (110V) COMMANDER4100-E (220V) R1234yf & HYBRID	COMMANDER3100 (110V) COMMANDER3100-E (220V) R134a & HYBRID	COMMANDER2100 (110V) COMMANDER2100-E (220V) R134a FULLY AUTOMATIC	COMMANDER1100 (110V) COMMANDER1100-E (220V) R134a SEMI-AUTOMATIC
10" Color Command Center with Touch Screen	✓	✓	✓	✓
Automatic and Manual Procedures	✓	✓	✓	Manual procedures only
Vehicle Refrigerant Database	✓	✓	✓	Optional
Automatic Vacuum Leak Test: Programmable	✓	✓	✓	✓
Automatic Oil Discharge	✓	✓	✓	✓
Automatic and Manual Air Purge	✓	✓	✓	✓
Auto Filter, Full Tank and Low Refrigerant Alarms	✓	✓	✓	✓
Auto Oil Injection	220 V MODEL ONLY	220 V MODEL ONLY	✓	NA
E-Printing Capability	✓	✓	Optional	Optional
Hose Flushing	✓	✓	NA	NA
Vehicle A/C System Flushing	Optional	Optional	NA	NA
Tank Heater	✓	✓	✓	✓
Vacuum Pump	6 CFM	6 CFM	6 CFM	3 CFM
Refrigerant Identifier	✓	NA	NA	NA
Multiple Languages	✓	✓	✓	✓
On-Board Unit Conversion Calculator	✓	✓	✓	✓
Cabinet Designed for Increased Air Flow	✓	✓	✓	✓
Large Analog Gauges	✓	✓	✓	✓
Hard Wired Power Cord	✓	✓	✓	✓
Hose Coupler Storage	✓	✓	✓	✓
Solid Durable Wheels with Locking Casters	✓	✓	✓	✓
Multi-Colored LED Status Bar	✓	✓	✓	NA
Self-Diagnostic Check	✓	✓	✓	✓
Wi-Fi Capable	✓	✓	✓	✓
Mastercool Dust Cover	✓	✓	✓	✓
Dimensions (mm): 1150 (h) x 600 (w) x 770 (d)	✓	✓	✓	✓

**ENLARGED 10" COLOR TABLET
WITH TOUCH SCREEN FEATURES:**



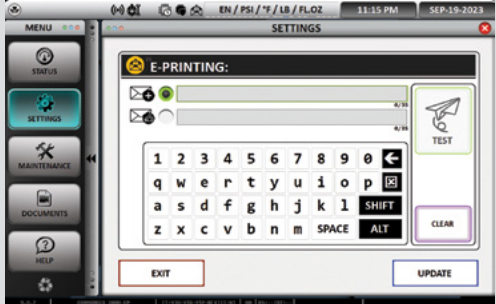
Home Screen

allows for quick touch selection of options



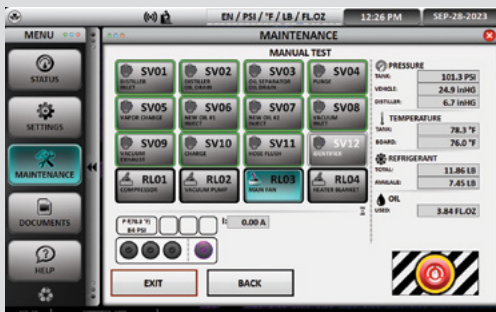
Status Screen

for quick reference of resources



E-Printing Screen

for a comprehensive, emailed report
(COMMANDER1100/2100 optional upgrade)



Maintenance Screen

offered only to authorized service technicians allowing
for quick and easy diagnosis

EXCEEDS SAE STANDARDS FOR PURITY AT 98.5%

