



# BMS-icom Battery Monitoring System

**Common Applications:** Generators, Power Utilities & Distribution



BMS-icom

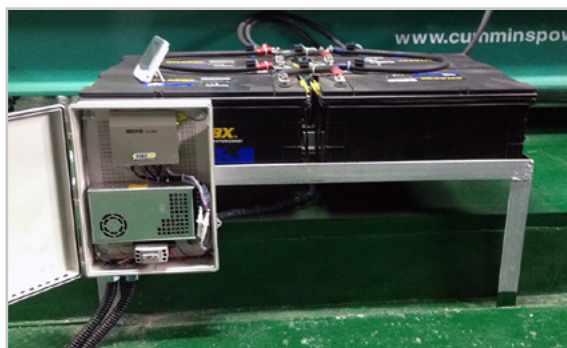
## Product Description

The **BMS-icom Battery Monitoring System** is designed to measure the aging status of critical backup batteries by measuring and recording: system voltage, load current, unit voltage, internal resistance, and unit temperature. The included **Centroid 2 Battery Management Software** displays and records measured data for comprehensive trending analysis. The BMS-icom is accurate, repeatable, user-friendly, and cost effective solution for monitoring 48VDC systems using (4) 12V batteries.

Reduce maintenance costs, improve up-time and manage your battery assets effectively by using the BMS-icom battery monitoring solution for your 48V system. Real-time battery monitoring also reduces maintenance and replacement costs by maximizing your battery life.

## Product Features

- 24/7/365 Battery Monitoring
- Installation and maintenance can be done while battery systems are online
- Meets IEEE and NERC standard recommendations for battery monitoring
- Utilizes a patented ripple-removing algorithm to filter noise from measurement results
- Injects minimal current for measurement
- Simple to install with custom, pre-assembled materials
- Alerts in real-time during outbreak



BMS-icom Installation

## Technical Specifications

<b>Measurement Range:</b>	Battery Capacity: 5 – 6,000 Ah System Voltage: 0 – 55 VDC Load Current: $\pm 999.9$ A Unit Voltage: 12 V
<b>Accuracy:</b>	System Voltage: $\pm 0.5\%$ / 0.1 V Load Current: $\pm 1\%$ / 0.1 A Unit Voltage: $\pm 0.5\%$ / 0.01 V Internal Resistance: $\pm 2\%$ / 0.001 m $\Omega$ Unit Temperature: $\pm 2\%$ / 0.1 °
<b>Test Speed / Test Load:</b>	4 seconds per cell / less than 2 amps AC per unit
<b>Measuring Interval:</b>	Adjustable from 10 min to 24 hours (voltage & resistance)
<b>Operating Environment:</b>	Temperature: 0 – 65 °C (32 – 150 °F) Relative Humidity: Under 80%
<b>Power Requirements:</b>	Input: 38 – 58 VDC (from connected batteries)
<b>Dimensions / Weight:</b>	140 x 121 x 44.5 mm (5.5 x 4.8 x 1.8 in)

## System Includes

- BMS-icom hardware
- Centroid 2 battery management software
- All installation materials
- Fitted CT clamp
- USB drive with software and support literature
- **Optional:** Spare parts kit

## Ordering Information

No.	Model #	Description
1	BMS-icom	Battery Monitoring Solutions: Up to 4 (12V) units