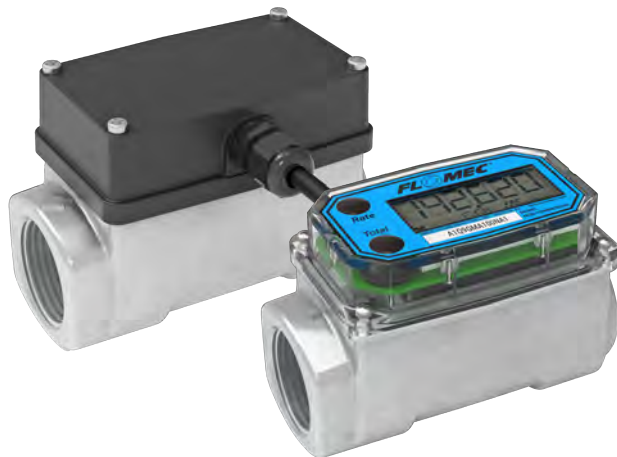


A1 SERIES ALUMINUM TURBINE METER



FLOMEC® A1 Series Turbine Meter for accurate measurement of thin petroleum-based fluid applications. A1's lightweight, compact design allows for easy installation.

A1A-10-N-Q MODEL WITH DISPLAY

A1 Aluminum featuring the Q9 Display is designed as self-contained, battery-powered unit. Intrinsically safe for use in hazardous areas.†

FEATURES / BENEFITS

- Unique package combines Turbine and LCD into a self-contained, compact, economical meter
- Local Display Computer features: 2 Non-Volatile Totals (Batch Total = Resettable, Total = Non-resettable) and Rate of Flow
- Output capabilities available to communicate with process control equipment
- 12 selectable engineering units (gallons or liters are standard defaults)
- Factory calibration
- AAA Alkaline battery life: 2 years

A1A-10-N-P MODEL (BLIND)

A1 Aluminum with Conditioned Signal Output Module (Blind). Conditioned signal module is not FM approved. The conditioned signal output module is not intrinsically safe, and not approved for use in hazardous areas.

FEATURES / BENEFITS

- Provides an NPN Open Collector pulse that can communicate with most process control devices
- Modular design allows for use with output modules, sensors, and remote display kits; plug and play
- External 9 to 35 V (DC), approximately 1mA
- 10 ft. (3 m) 3-wire with strain relief
- Factory calibration

APPLICATIONS

- Fuel Transfer
- Batching / Blending
- Fuel Products

APPROVALS† / WARRANTY



†If the meter includes any modules (4-20 mA and Pulse Out) that introduces external power, then all intrinsic safety approvals are voided.

SPECIFICATIONS

Model Numbers:		A1A-10-N-Q w/ Q9 display A1A-10-N-P conditioned signal output (blind)
Design Type:		Turbine
Fitting Size / Fitting Type:		1-inch / NPT (Female)
Flow Range:		3 - 50 GPM 11 - 190 L/min
Accuracy (% of Reading):		± 1.5%
Repeatability:		± 0.2%
Pressure Rating (Aluminum):		300 psi (21 bar)
Operating Temperature Range:		-40°F to 250°F (-40°C to 121°C)
with Safe Area Only Display:		0°F to 140°F (-18°C to 60°C)
with Intrinsically Safe Display:		0°F to 129°F (-18°C to 54°C)
Typical K-Factor:		730 PPG (193 Pulses/L)
Frequency Range:		36.5-608.3 Hz @ 3-50 GPM (11-190 L/min)
Recommended Strainer Size:		35 mesh (500 µm)
Wetted Materials (Aluminum):	Housing:	Aluminum
	Bearings:	Ceramic (96% Alumina)
	Shaft:	Tungsten Carbide
	Rotor:	Nylon
	Rings:	316 Stainless Steel
Calibration Report:		N.I.S.T. – Certification available.

Field calibration is recommended for best accuracy.

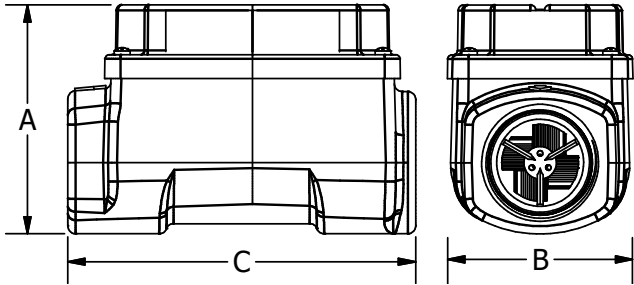
A1 SERIES

ALUMINUM TURBINE METER

DIMENSIONS

A = Height*	2.5 in. (63.5 mm)
B = Width	2.0 in. (50.8 mm)
C = Length	4.0 in. (101.6 mm)

*Height includes 0.7 in. (1.8 cm) for the computer electronics.



ACCESSORIES

113275-10
FM Approved* Remote Kit



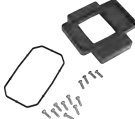
113435-10
Conditioned Signal Module



125100-10
4-20 mA Module



125260-02
90° Display Adapter Kit



*Does not make Non-FM or Non-ATEX Approved meters FM or ATEX Approved