

Valves – Connectors



A-310A A-310B



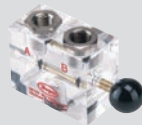
A-311



A-312



A-5000



A-355



A-365



A-315



A-316



A-317



A-318



A-319



A-321



A-322

Instrument valves for permanent installation. They mount in part A-316, A-317, type C manometer connections or Magnehelic® gage and connect to metal tubing or 1/8" pipe. **A-310A**, 3-Way Vent Valve, plastic, 1/8" NPT to 1/4" metal tubing. Positions are: (1) Line: Gage connected to pressure source. (2) Off: Both gage and connection to pressure source closed. (3) Vent: Gage vented to atmosphere and connection to pressure source closed. 80 psi rating. Replaces former model A310 (brass)

A-310B, same as A-310A but with 10 psi rating

A-311, Shut Off Valve, brass, 1/8" NPT to 1/8" NPT

A-312, Shut Off Valve, brass, 1/8" NPT to 1/4" metal tubing

A-5001-1, PVC 1/8" hose barb inlet x 1/8" hose barb outlet x 1/8" hose barb outlet (125 psi maximum)

A-5002-2, PVC 1/4" hose barb inlet x 1/4" hose barb outlet x 1/4" hose barb outlet (125 psi maximum)

A-5003-3, PVC 1/8" female NPT inlet x 1/8" female NPT outlet x 1/8" female NPT outlet (125 psi maximum)

A-5003-5, PVC 1/8" male NPT inlet x 1/8" female NPT outlet x 1/8" female NPT outlet (125 psi maximum)

A-5004-4, PVC 1/4" female NPT inlet x 1/4" female NPT outlet x 1/4" female NPT outlet (125 psi maximum)

A-5004-6, PVC 1/4" male NPT inlet x 1/4" female NPT outlet x 1/4" female NPT outlet (125 psi maximum)

A-5005-3, PVC 1/8" female NPT inlet x 1/8" male NPT outlet x 1/8" male NPT outlet (125 psi maximum)

A-5006-4, PVC 1/4" female NPT inlet x 1/4" male NPT outlet x 1/4" male NPT outlet (125 psi maximum)

A-355, Porting Valve, acrylic plastic, 1/8" NPT inserts. Used for convenient indication of pressure at two points with a single gage

A-365, Dual Porting Valve, acrylic plastic, 1/8" NPT fittings. For monitoring three pressures, two at a time, with one gage

Gage Connectors for Manometers. Molded nylon construction, threaded .786 x 27 N.S., with O-ring seal.

A-315, Gage connector, Shut off type, for 3/16" rubber tubing

A-316, Gage connector, bushing, 1/8" pipe thread opening

A-317, Gage connector, 1/8" pipe thread opening, less OD thd., for slip fit in 3/4" dia. opening in 250 series A.F. gages

A-318, Gage connector 1/4" pipe thread opening

A-319, Flexible Red P.V.C. connector, 3/16" ID Rubber Tubing to 1/4" ID Plastic Tube for 1221, 1222 and 1227 Manometers

A-321, Brass Safety Relief Valve Protects Magnehelic® or Photohelic® Gage against over pressure due to regulator failure etc. Opens at 10 psi. Mounts in tee fitting in sensing line or in unused gage port with addition of A-349 reducer. 1/4" male NPT (Use two for D.P. application)

A-322, Gage connector for 1/4" tubing. Slip fits in 3/4" opening in 250 series A.F. gages (Compression nut and ferrule not included)