



Air Volume Instruments



Model ABT701
and ABT711

Analog Balometer® Capture Hoods Models ABT701/ABT703/ABT711/ABT713

The new ABT Analog Balometer® Capture Hood continues the long Alnor® tradition of providing accurate and dependable analog instrumentation to the ventilation testing and balancing community. By placing an Alnor® ABT Balometer® Capture Hood over a diffuser or grille, air volume measurements are obtained quickly and easily which maximizes productivity.

Fast meter response and easy-to-read indicator over a large scale make the ABT Balometer® Capture Hood an ideal choice for facility engineers, ventilation testing and balancing professionals, and commissioning.

Features and Benefits

- Simple-to-read analog meter allows for quick measurements
- Easy-to-carry with one hand using sturdy middle handle
- Ergonomic design and ultra light weight for easy one person operation
- Multiple hood sizes available
- Measurement hold function
- Wheeled, luggage-style carrying case

Applications

- HVAC commissioning
- Troubleshooting HVAC systems
- Testing and balancing HVAC systems

Optional Accessories

- Multiple hood sizes available

Rugged. Reliable. Professional.



Air Volume Instruments

ABT Analog Balometer® Capture Hoods

Specifications

Supply and Exhaust Ranges

30 to 1,000 CFM (ft³/min), 50 to 2,000 CMH (m³/hr)

Accuracy

ABT701/ABT703 ±3% of full scale selected +5 CFM (ft³/min)

ABT711/ABT713 ±3% of full scale selected +10 CMH (m³/hr)

Units

ABT701/ABT703 CFM (ft³/min)

ABT711/ABT713 CMH (m³/hr)

Scale Divisions (Supply/Exhaust)

CFM (ft³/min)
5 from 30 to 250
10 from 200 to 500
20 from 400 to 1000

CMH (m³/hr)
10 from 50 to 500
20 from 400 to 1000
40 from 800 to 2000

Power Requirements

Four AA-size cells alkaline

Battery life

200 CFM (340 CMH) 29.2 hours

800 CFM (1360 CMH) 21.3 hours

1000 CFM (1700 CMH) 20.4 hours

Weight with Batteries

7.4 lb (3.4 kg)

Operating Temperature Range

32 to 140°F (0 to 60°C)

Storage Temperature Range

-40 to 140°F (-40 to 60°C)

Model Description

ABT701 30 to 1000 CFM (ft³/min) with 2 ft x 2 ft (610 mm x 610 mm) hood

ABT703 30 to 1000 CFM (ft³/min) with 16 in x 16 in (406 mm x 406 mm) hood

ABT711 50 to 2000 CMH (m³/hr) with 2 ft x 2 ft (610 mm x 610 mm) hood

ABT713 50 to 2000 CMH (m³/hr) with 16 in x 16 in (406 mm x 406 mm) hood

Optional Hood and Frame Kits

801097 2 ft x 2 ft (610 mm x 610 mm)

801201 2 ft x 4 ft (610 mm x 1220 mm)

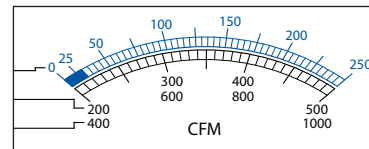
801200 1 ft x 4 ft (305 mm x 1220 mm)

801202 1 ft x 5 ft (305 mm x 1525 mm)

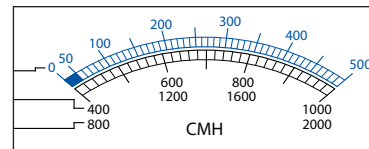
801203 3 ft x 3 ft (915 mm x 915 mm)

801209 16 in x 16 in (406 mm x 406 mm)

Model ABT703
and ABT713



Models ABT701/ABT703



Models ABT711/ABT713

Specifications subject to change without notice.

TSI, the TSI logo, Alnor, and Balometer are trademarks of TSI Incorporated.

