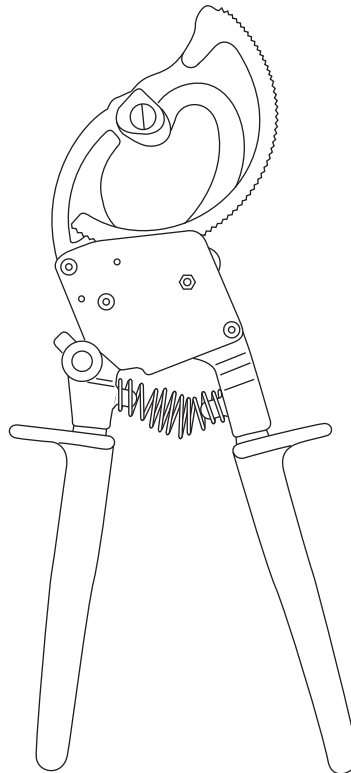


SERVICE BULLETIN



760 Ratchet Cable Cutter



Read and understand all of the instructions and safety information in this manual before operating or servicing this tool.

IMPORTANT SAFETY INFORMATION



SAFETY ALERT SYMBOL

This symbol is used to call your attention to hazards or unsafe practices which could result in an injury or property damage. The signal word, defined below, indicates the severity of the hazard. The message after the signal word provides information for preventing or avoiding the hazard.

⚠ DANGER

Immediate hazards which, if not avoided, **WILL** result in severe injury or death.

⚠ WARNING

Hazards which, if not avoided, **COULD** result in severe injury or death.

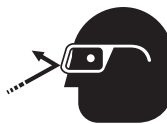
⚠ CAUTION

Hazards or unsafe practices which, if not avoided, **MAY** result in injury or property damage.



⚠ WARNING

Electric shock hazard:
This tool is not insulated. Contact with live circuits could result in severe injury or death.



⚠ WARNING

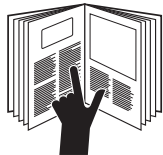
Wear eye protection when operating or servicing this tool.
Failure to wear eye protection could result in serious eye injury from flying debris.



⚠ WARNING

Keep hands and fingers clear of blades.
Failure to observe this warning could result in severe injury or death.

Note: Keep all decals clean and legible, and replace when necessary.



⚠ WARNING

Read and understand all of the instructions and safety information in this manual before operating or servicing this tool.
Failure to observe this warning could result in severe injury or death.

All specifications are nominal and may change as design improvements occur. Greenlee Textron Inc. shall not be liable for damages resulting from misapplication or misuse of its products.

KEEP THIS MANUAL

Specifications

Length: 11-3/4" (298 mm)

Weight: 1.75 lb (0.8 kg)

IMPORTANT

Do not cut ACSR or steel.

Capacity

	Maximum	Frequent Use
Copper	1000 kcmil (MCM) (500 mm ²)	750 kcmil (MCM) (400 mm ²)
Aluminum	1000 kcmil (MCM) (500 mm ²)	1000 kcmil (MCM) (500 mm ²)
Communications Cable	1-3/4" diameter (44 mm ²)	—

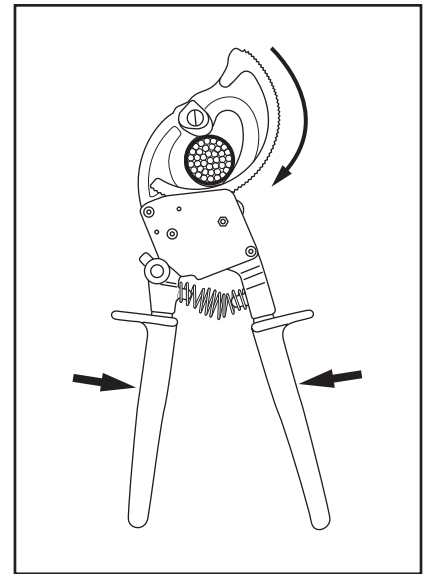
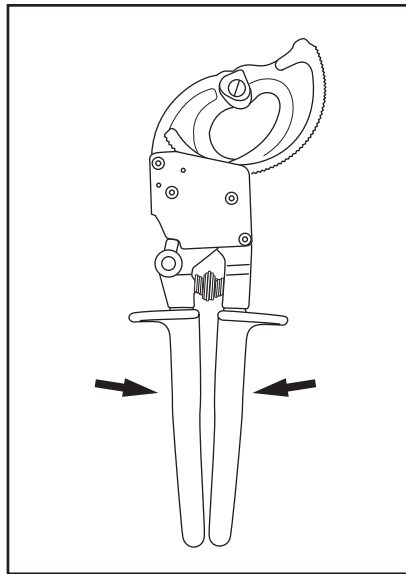
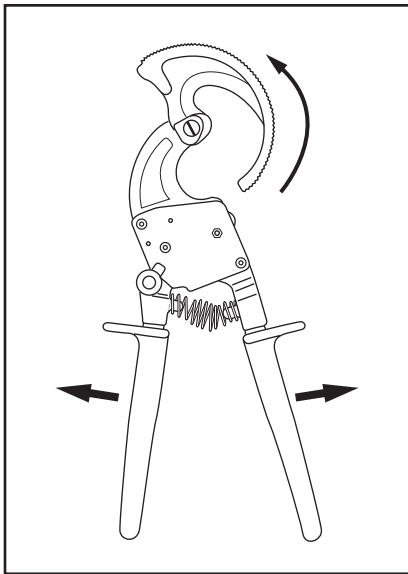
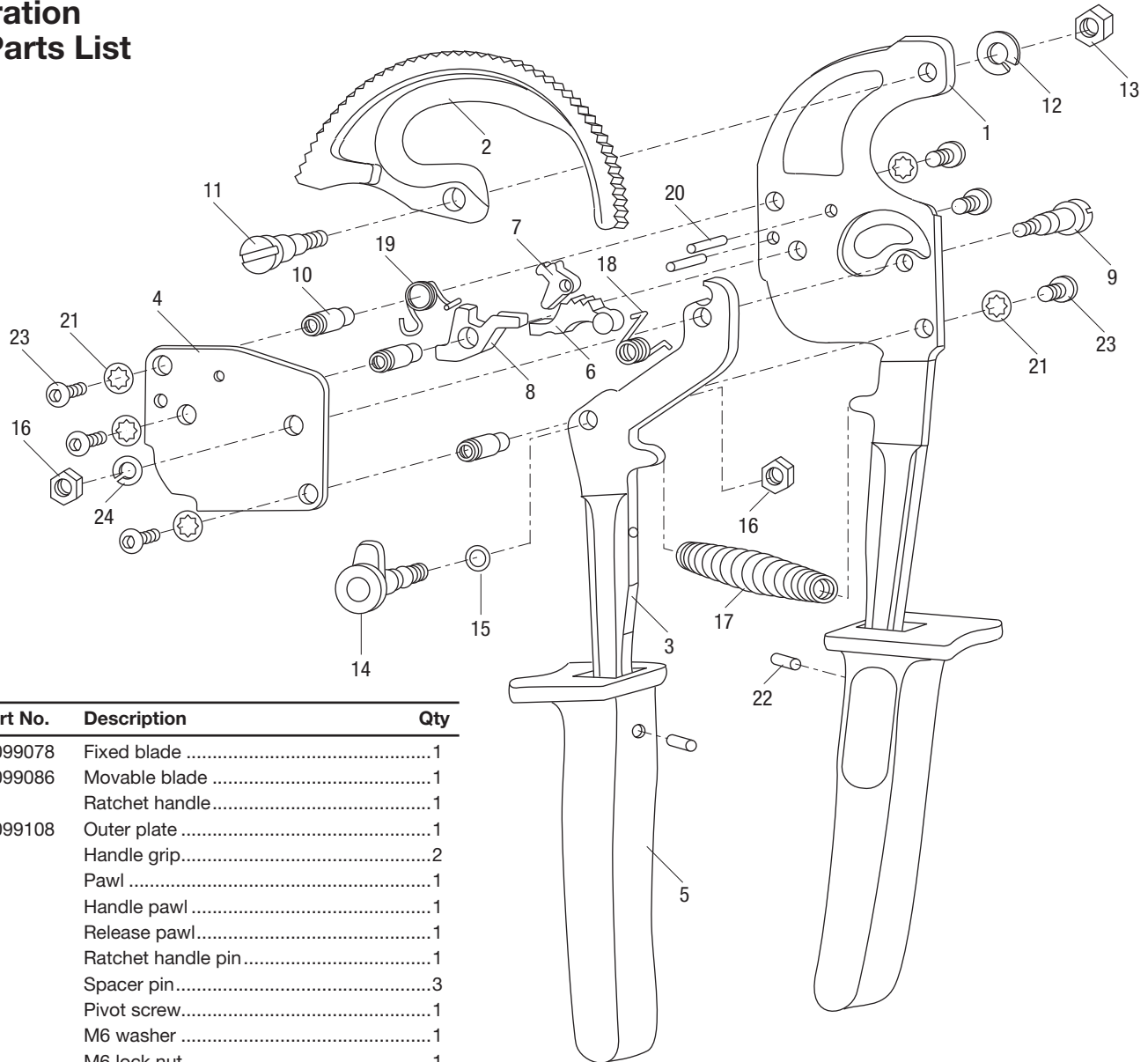


Illustration and Parts List



Key	Part No.	Description	Qty
1	50099078	Fixed blade	1
2	50099086	Movable blade	1
3		Ratchet handle	1
4	50099108	Outer plate	1
5		Handle grip	2
6		Pawl	1
7		Handle pawl	1
8		Release pawl	1
9		Ratchet handle pin	1
10		Spacer pin	3
11		Pivot screw	1
12		M6 washer	1
13		M6 lock nut	1
14		Ratchet lever knob	1
15		O-ring	1
16		M4 lock nut	2
17	50099221	Coil spring	1
18		Pawl spring	1
19		Ratchet pawl spring	1
20		Ratchet pawl set pin	2
21		M4 lock tooth washer	6
22		Handle grip set plug	2
23		Socket head set screw	6
24		M4 spring washer	1

Repair Kits (quantities as listed above)

50011707	Pawl kit (includes items 6–8, 18–20)
50011782	Pivot screw kit (includes items 9, 11–13, 16, 24)
50011790	Set screw kit (includes items 10, 21, 23)
50011820	Ratchet lever knob kit (includes items 14–16)
50011855	Handle with grip and plug kit (includes one each of items 3, 5, 17, 22)

