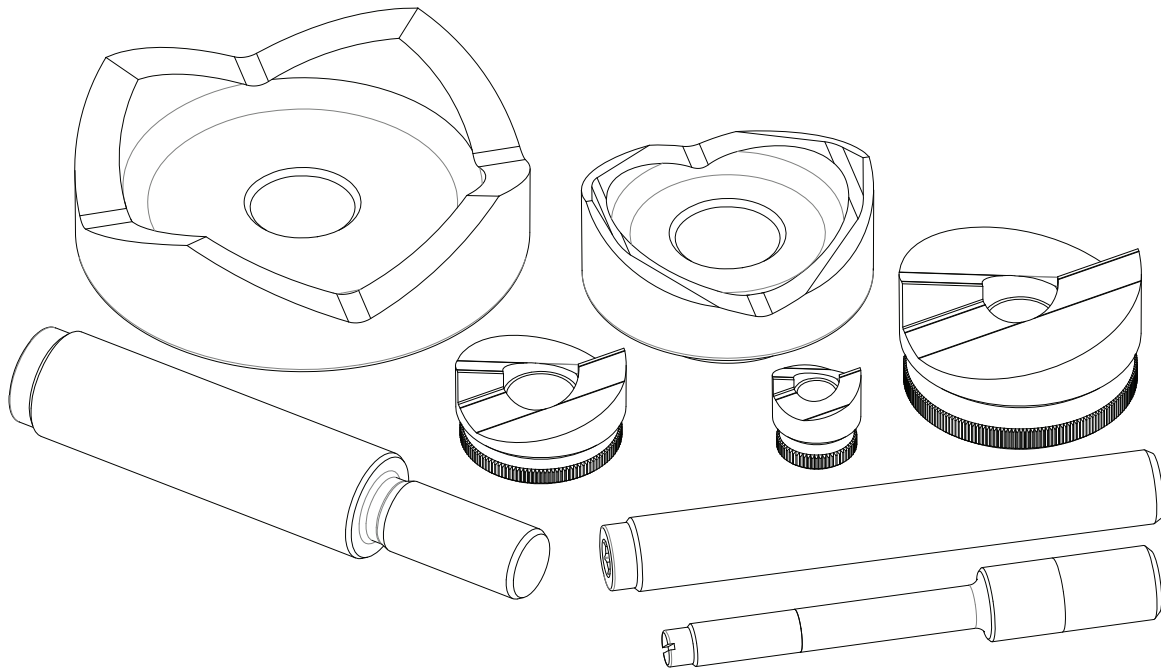


INSTRUCTION MANUAL



Español..... 6
Français..... 11

Knockout Usage with Hydraulic Drivers



Read and understand all of the instructions and safety information in this manual before operating or servicing this tool.

Table of Contents

Description	2
Safety	2
Purpose of this Manual	2
Important Safety Information	3-4
Punch, Die, and Drawstud Selection.....	5

Description

Greenlee punches are cutting tools for punching holes in a variety of materials and material thicknesses. These punches are intended to be used with Greenlee dies, drawstuds, and knockout drivers.

These punches are designed to be used with the following Greenlee tools:

- Intelli-PUNCH™ Battery-Hydraulic Knockout Driver
- LS50L2 Battery-Hydraulic Knockout Driver
- Quick Draw® Hydraulic Drivers
- 746A Hydraulic Driver

Standard and Slug-Buster punches can punch holes through mild steel, brass, copper, aluminum, fiberglass, and plastics, with limited stainless steel capability. Do not exceed the rated capacity of the punch. Driver and punch capacity ratings can differ. Ensure your hydraulic driver meets capacity ratings before attempting to punch a hole.

Safety

Safety is essential in the use and maintenance of Greenlee tools and equipment. This manual and any markings on tools provide information for avoiding hazards and unsafe practices related to the use of the tools. Observe all of the safety information provided.

Purpose of this Manual

This manual is intended to familiarize all personnel with the safe operation and maintenance procedures for the following Greenlee tool:

Punches for Hydraulic Tool Use

Keep this manual available to all personnel.

All specifications are nominal and may change as design improvements occur. Greenlee Tools, Inc. shall not be liable for damages resulting from misapplication or misuse of its products.

Quick Draw and Slug-Buster are registered trademarks of Greenlee Tools, Inc.

KEEP THIS MANUAL

IMPORTANT SAFETY INFORMATION



SAFETY ALERT SYMBOL

This symbol is used to call your attention to hazards or unsafe practices which could result in an injury or property damage. The signal word, defined below, indicates the severity of the hazard. The message after the signal word provides information for preventing or avoiding the hazard.

⚠ DANGER

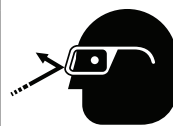
Immediate hazards which, if not avoided, **WILL** result in severe injury or death.

⚠ WARNING

Hazards which, if not avoided, **COULD** result in severe injury or death.

⚠ CAUTION

Hazards or unsafe practices which, if not avoided, **MAY** result in injury or property damage.



⚠ WARNING

Wear eye protection when operating or servicing this tool.

Failure to wear eye protection could result in serious eye injury from flying debris or hydraulic oil.



⚠ WARNING

Skin injection hazard:

Do not use hands to check for oil leaks. Oil under pressure easily punctures skin. If injured, seek medical attention immediately to remove oil.

Failure to observe this warning could result in serious injury, gangrene, or death.



⚠ WARNING

Do not use solvents or flammable liquids to clean the tool body. Solvents or flammable liquids could ignite and cause serious injury or property damage.



⚠ WARNING

Read and understand all of the instructions and safety information in this manual before operating or servicing this tool.

Failure to observe this warning could result in severe injury or death.



⚠ WARNING

Electric shock hazard:

This tool is not insulated. When using this unit on or near energized electrical lines, use proper personal protective equipment.

Failure to observe this warning could result in severe injury or death.



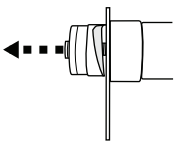
⚠ WARNING

Pinch points:

- Remove battery before changing dies, adapters, or jaws.
- Keep hands away from the tool head when punching.

Failure to observe these warnings could result in severe injury or death.

IMPORTANT SAFETY INFORMATION (cont'd)



⚠ WARNING

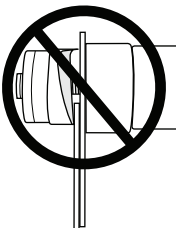
A component failure could throw broken parts.

- Do not allow anyone to stand in front of the punch or behind the hydraulic ram.
- Close access doors or covers on any equipment that is in line with the punch or ram.

Failure to observe this warning could result in severe injury or death.

⚠ WARNING

- Inspect tool for wear or damage. Replace any worn, damaged, or missing components with Greenlee replacement parts. A damaged or improperly assembled tool can break and strike nearby personnel with sufficient force to cause severe injury or death.
- Inspect the punch, die, and drawstud for wear or damage. Replace any worn or damaged items with Greenlee replacement parts. Replace any punches that have dull cutting surfaces.



⚠ WARNING

Do not attempt to punch a hole through two or more layers of material. This will bend or break the drawstud, and could throw parts with great force.

Failure to observe this warning could result in severe injury or death.

⚠ WARNING

Do not exceed the rated capacity of this tool. Exceeding the rated capacity could cause a component failure, which could throw broken parts with great force.

Failure to observe this warning could result in severe injury or death.

⚠ WARNING

Set up the tool properly. An improper setup could cause a component to fail and strike nearby personnel with great force.

- *Use only Greenlee punches, dies, and drawstuds. Other manufacturers' components might not withstand the forces generated by this punch driver.*
- **Manual Punch Setup:** The punch must be threaded completely onto the drawstud. All of the punch threads must be engaged by the drawstud threads. Incomplete assembly could cause a component failure.
- **Hydraulic Punch Setup:** The drawstud must be threaded completely into the driver head. The punch must be threaded completely onto the drawstud. All of the punch threads must be engaged by the drawstud threads. Incomplete assembly could cause a component failure.
- **SPEED PUNCH Setup:** The drawstud must be threaded completely into the driver head. The SPEED LOCK must fully engage and completely close on the drawstud. Incomplete assembly could cause a component failure.

Failure to observe these warnings could result in severe injury or death.

⚠ WARNING

Ensure the punch cycle is stopped after a hole is made. Failure to do so could cause a part collision which could throw broken parts.

Failure to observe this warning could result in severe injury or death.

⚠ CAUTION

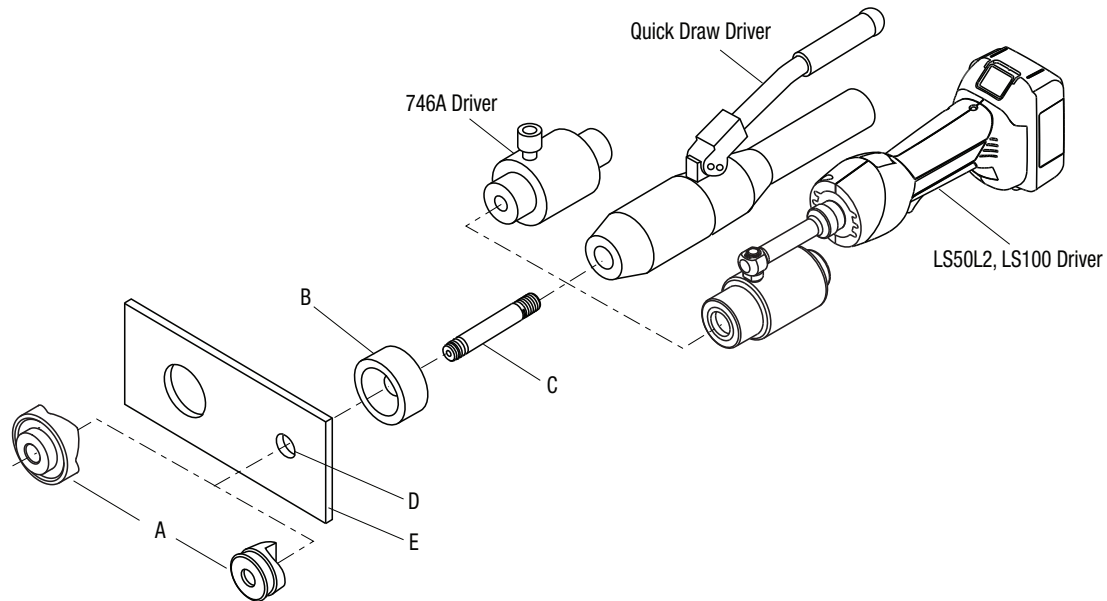
- Do not operate hydraulic drivers with electric power pumps.
- Make sure you have firm footing and balance when operating. Position yourself to avoid any injuries in case of slippage, breakage or any other loss of control while punching.
- Inspect all parts before assembly and use for cracks, chips, worn threads or other damage. Make sure punch is sharp before using. Replace parts as needed with genuine Greenlee Replacement Parts.

Failure to observe these precautions may result in injury.

Note: Keep all decals clean and legible, and replace when necessary.

Punch, Die, and Drawstud Selection

Standard Round and Slug-Buster Punches



Conduit Size	Actual Hole Size		Punch (Slug-Buster) (A)	Punch (Standard Round) (A)	Die (B)	Drawstud for 746A, LS50L2, and LS100 Drivers (C)	Drawstud for Quick-Draw Driver (C)	Minimum Pilot Hole Size (D)	Maximum Material Rating for Punch (E)
1/2"	0.885"	22.5mm	K2P-1/2	K3P-1/2	KD-1/2	DSH-7/16	DSH-S7/16	1/2"	10 ga Mild Steel OR 12 ga Stainless Steel
3/4"	1.115"	20.3mm	K2P-3/4	K3P	KD-3/4	DSH-3/4	DSH-S3/4	7/8"	
–	1.210"	30.5mm	K2PM-0305	N/A	KDM-0305				
1"	1.362"	34.6mm	K2P-1	K3P-1	KD-1				
1-1/4"	1.701"	43.2mm	K2P-1-1/4	K3P-1-1/4	KD-1-1/4				
1-1/2"	1.951"	49.6mm	K2P-1-1/2	K3P-1-1/2	KD-1-1/2				
2"	2.416"	61.5mm	K2P-2	K3P-2	KD-2				
2-1/2"	2.914"	74.0mm	-	K3P-2-1/2	KD-2-1/2	DSH-1-1/8	N/A	1-1/4"	
3"	3.539"	89.9mm	-	K3P-3	KD-3				
3-1/2"	4.044"	102.7mm	-	K3P-3-1/2	KD-3-1/2				
4"	4.544"	115.4mm	-	K3P-4	KD-4				

Note: Punch and driver capacities can differ. Ensure your driver capacity is adequate before attempting to punch a hole.