

LCD-H11X

Loop Powered Heavy-duty LCD Field Indicator



LCD-H11X



LCD-H11X is a digital, heavy-duty LCD indicator for installation directly in a 4-20 mA loop without need for external power.

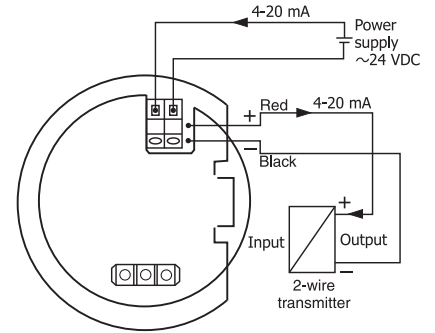
The indicator is equipped with high-contrast, easy-to-read LCD digits. The scale is easily programmable, without reference signal, by three push buttons for any values between -1999 and 9999.

- Can be used with any DIN B transmitter or as display only
- Installation directly in a 4-20 mA loop without need for power supply
- Only 1.5 V voltage drop
- High-contrast, 4-digit LCD display
- Simple push button scaling without reference signal
- Any range between -1999 to 9999 for 4 to 20 mA input
- Labels for different engineering units are included
- Typical accuracy of 0.05 % allows for high precision read-outs
- HART transparent
- Designed for ambient temperatures between -25 to +70 °C / -13 to +158 °F
- Field mounting in rugged IP 66 / NEMA 4X housing
- 90° indexing of display orientation

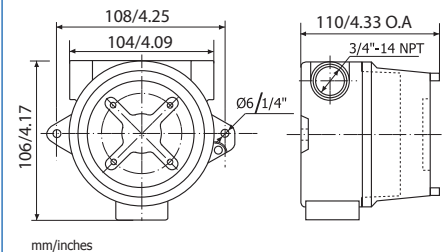
Specifications:

Input Current	4-20 mA
Maximum current	30 mA
Minimum current for operation	~3.5 mA
Voltage drop	~1.5 V
Indication	
Display	Black LCD with 4 digits including minus sign
Digit height	12.7 mm / 0.5 "
Indication range	Any range between -1999 to 9999
Decimals	Selectable, 0 to 3
Under range / Over range	Flashing symbols LO/HI
Engineering units	Set of labels included (including blanks)
Response time	Appr. 0.5 s
Scale setting	3 pushbuttons inside the housing
Operation temperature	-25 to +70 °C / -13 to +158 °F
Typical accuracy	±0.05 % FS ±1 digit
Connections	Stranded, ≤ 1.5 mm ² AWG 16
Enclosure	
Material	Pressure Die Cast Aluminium; Silicone Rubber gasket; Glass window
Paint	Spray Epoxy Primer with Polyurethane Top Coat. Color: RAL 5005 Signal Blue
Protection	NEMA 4X / IP66 FM/CSA Class 1, Div 1 & 2 [FM Cert 3019264] [CSA Cert 1717515]
Conduit Connections	3 x 3/4" NPT Threaded ports
Mounting	Wall mount or optional 2" Conduit 316 SS bar clamp

Indicator Connections



Dimensions



Ordering information

LCD-H11X	70LCDH11X
Configuration	70CAL00001
SS Bar clamp	70PMB-2-SS316
For indicator only (without housing), contact Inor	