



***Miniature 6 digit low
power Totalising Counter***

**7000
7000AS**



English
Page 2

Higher Voltage Power Supply,

Page 7

015550-01 Issue 5.0 02/20

Specification

Dimensions (mm)

27(W)x17.5(H)x6.5(D)

Panel Cutout

29.4mm x 22mm

Weight

7.5 grams

Supply voltage

2.6 - 3.4VDC

Current consumption

5µA quiescent, 10µA at 10kHz.

Display

6 digit black LCD, 6mm characters

Count Range

999999 display rollover to 0

This product is intended for use in battery powered applications.

Count Input

10kHz max, negative edge triggered, 0.7v threshold 18v max, 50µS min. pulse length, TTL/CMOS Compatible.

Reset Input

Negative edge triggered, 0.7v threshold 18v max, 15mS min. pulse length, TTL/CMOS Compatible.

Direction Input (7000AS model)

Add=logic 1, Subtract=logic 0 (0v)

Storage and operating temp.

-10°C to +60°C

Material

Clear polycarbonate

Sealing

IP40/DIN40050

The model 7000 counts up only; model 7000AS (Add/Subtract) is bi-directional and has a direction input pin. The different pin connections on the two models are listed below. The unit is mounted the correct way up when the single pin is on the left when viewed from the front. The counters are suitable for either direct PCB mounting, having pins at 0.1 inch pitch, or panel mounting with bezel supplied. Either of the counters can be powered from a higher voltage DC supply using the external voltage control circuit shown on page 7.

Please note:

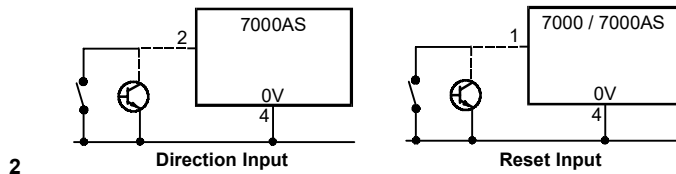
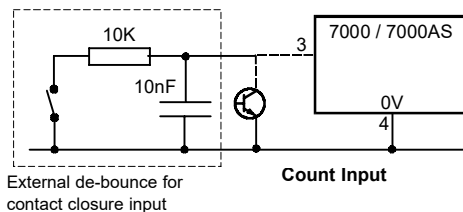
Any signal cables connected to this device must not exceed 30 metres in length.

If signal cables are installed that are routed outside the building, it will be necessary to install additional surge protection devices.

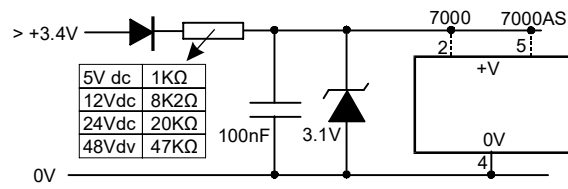
Pin Connections

(see page 7)

Pin	7000	7000AS
1	Reset	Reset
2	+V	Direction
3	Count I/P	Count I/P
4	0V	0V
5	0V	+V



Higher Voltage Power Supply,



Dimensions,

