



NAIL EATER® EXTREME UTILITY AUGER BITS

DURABLE INDUCTION-HARDENED STEEL

FOR EVEN LONGER AUGER BIT LIFE

IMPROVED DESIGN
LASTS
5X
LONGER*

66PT-1

**7/16" Hex Shank
Quick-Change
Impact-Rated**

Hollow Center Flute
Provides superior chip
evacuation for deeper holes
in utility poles and logs

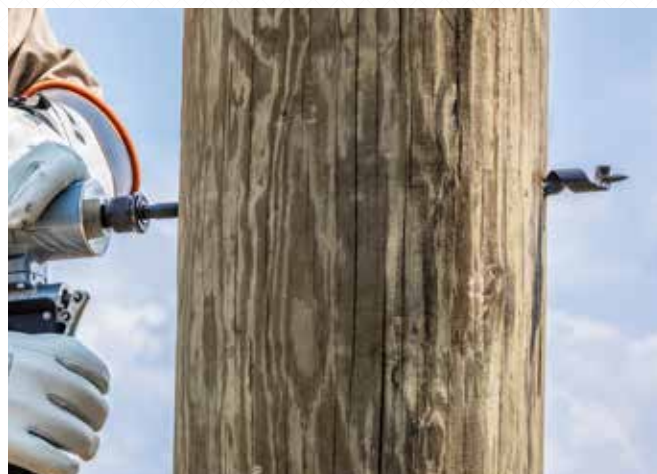
Improved Cutting Edge
Produces clean holes

Self-Feeding Screw Point
Draws bit through wood,
providing smooth starts

* Based on Greenlee testing
compared to prior designs

NEW

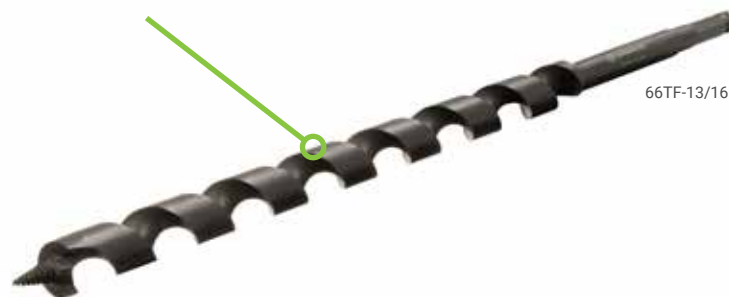
NAIL EATER® EXTREME UTILITY AUGER BITS



NAIL EATER® EXTREME BLACK

PTFE-Coating

Resists heat and friction for fast, smooth operation and no chip packing



66TF-13/16

CAT NO	HARDWARE SIZE	HOLE SIZE	OVERALL LENGTH	TWIST LENGTH	HEX SHANK
NAIL EATER® EXTREME					
37868	9/16"	5/8"	18"	12.9"	7/16"
37869	11/16"	3/4"	18"	12.9"	7/16"
37870G	13/16"	7/8"	18"	12.9"	7/16"
37871	15/16"	1"	18"	12.9"	7/16"
NAIL EATER® EXTREME BLACK					
66TF-11/16	11/16"	3/4"	18"	12.9"	7/16"
66TF-13/16	13/16"	7/8"	18"	12.9"	7/16"
66TF-15/16	15/16"	1"	18"	12.9"	7/16"

CAT NO	HARDWARE SIZE	HOLE SIZE	OVERALL LENGTH	TWIST LENGTH	HEX SHANK
NAIL EATER® EXTREME LONG					
70PT-11/16	11/16"	3/4"	24"	14.7"	7/16"
70PT-13/16	13/16"	7/8"	24"	14.7"	7/16"
70PT-15/16	15/16"	1"	24"	14.7"	7/16"
71PT-11/16	11/16"	3/4"	30"	14.7"	7/16"
71PT-13/16	13/16"	7/8"	30"	14.7"	7/16"
71PT-15/16	15/16"	1"	30"	14.7"	7/16"

See bit extensions if more length is required

NUT RUNNER ASSEMBLIES

NR1 Nut Runner

- 7/16" adapter for 5/8", 1/2", 13/16", 1" square nuts
- Deep well accepts up to 6" (152 mm) excess bolt length
- Slim profile for easy use and storage



NR1

NR2 Nut Runner

- 7/16" adapter for 1", 1-1/8", 1-5/16" square nuts
- Deep well accepts up to 6" (152 mm) excess bolt length
- Slim profile for easy use and storage