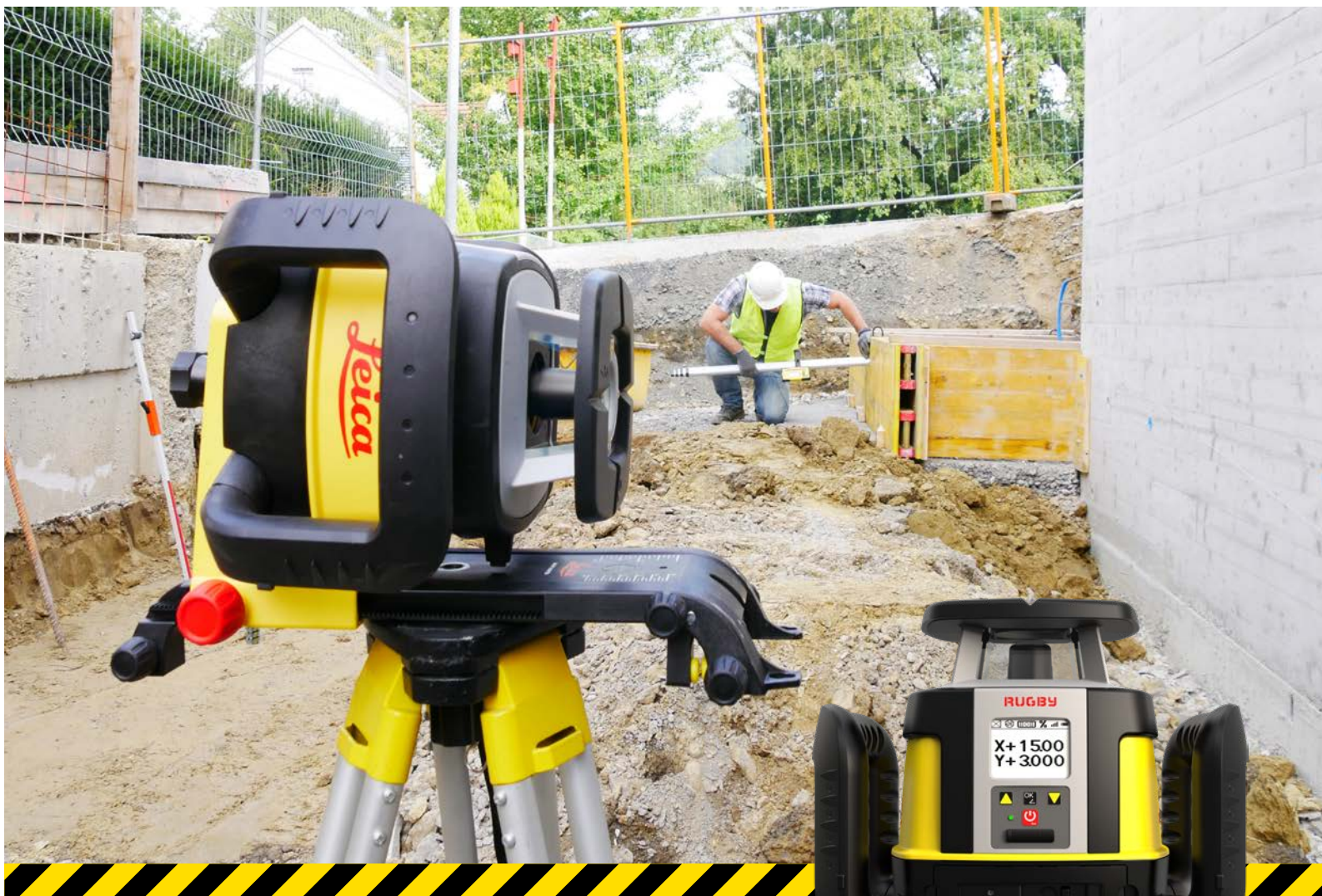


Leica Rugby CLH, CLA-ctive & CLI The first upgradable lasers



Covers all application needs

Equipped with all available functionalities, the Rugby CLA-ctive is the “all on board” laser. With grade dial in on the laser there is no compromise of flexibility and features for all your needs. You pay for the functionality you need to do your job without paying for the extra features that you don't use.

Designed for durability

The Rugby CLI laser with an invisible beam serves rail, excavation and daily construction applications. The CLI is the perfect solution for all jobs, where an invisible laser beam is required. Packed with additional professional features, the CLI is your reliable partner on the site.

Simplicity at its best

Leica Rugby CLH allows effortless use of the capabilities of the laser system. It saves time by simplifying applications and making you more productive. Its robust design secures measurement stability and accuracy for your daily tasks.

- when it has to be **right**

Leica

Find Quality Products Online at:

www.GlobalTestSupply.com

sales@GlobalTestSupply.com

Leica Rugby CLH, CLA-ctive & CLI



LEICA RUGBY	CLH	CLA-CTIVE	CLI
Warranty	5Y/2Y knockdown	5Y/2Y knockdown	5Y / 2Y knockdown
Grade capability ¹ (X/Y Axes)	8%	15%	15%
Self-levelling accuracy ²	± 1.5 mm at 30 m (± 1/16" at 100 ft)	± 1.5 mm at 30 m (± 1/16" at 100 ft)	± 1.5 mm at 30 m (± 1/16" at 100 ft)
Self-levelling range	± 6°	± 6°	± 6°
Operating range with Combo, RE 140/160	1350 m diameter	1350 m diameter	1350 m diameter
Remote range	600 m diameter	600 m diameter	600 m diameter
Laser class	1	2	1
Environmental standard	IP68/MIL-STD-810G	IP68/MIL-STD-810G	IP68/MIL-STD-810G
Operating temperature	-20 °C to +50 °C -4 °F to +122 °F	-20 °C to +50 °C -4 °F to +122 °F	-20 °C to +50 °C -4 °F to +122 °F
Storage temperature	-40 °C to +70 °C -40 °F to +158 °F	-40 °C to +70 °C -40 °F to +158 °F	-40 °C to +70 °C -40 °F to +158 °F
Rotation speed (RPS)	10, 15 RPS	0, 2, 5, 10, 15 RPS	10, 15, 20 RPS
Batteries	Li-Ion	Li-Ion	Li-Ion
Battery operating time ³	50 h	50 h	50 h
Battery charging	5 h (full charge) 1 h fast charge = 8 h operating	5 h (full charge) 1 h fast charge = 8 h operating	5 h (full charge) 1 h fast charge = 8 h operating
Dimensions (H × W × D)	230 mm / 9,1 in 296 mm / 11,7 in 212 mm / 8,3 in	230 mm / 9,1 in 296 mm / 11,7 in 212 mm / 8,3 in	230 mm / 9,1 in 296 mm / 11,7 in 212 mm / 8,3 in
Weight with batteries	3.8 Kg / 8,3 lbs	3.9 Kg / 8,5 lbs	3.9 Kg / 8,5 lbs

¹ Up to 45° with adapter.

² Accuracy defined at 25°C (77°F)

³ Battery life depending upon environmental conditions.

Note: All specifications are depending on activated functionality.

