

WEISS INSTRUMENTS

Plumbing

Heating

Cooling

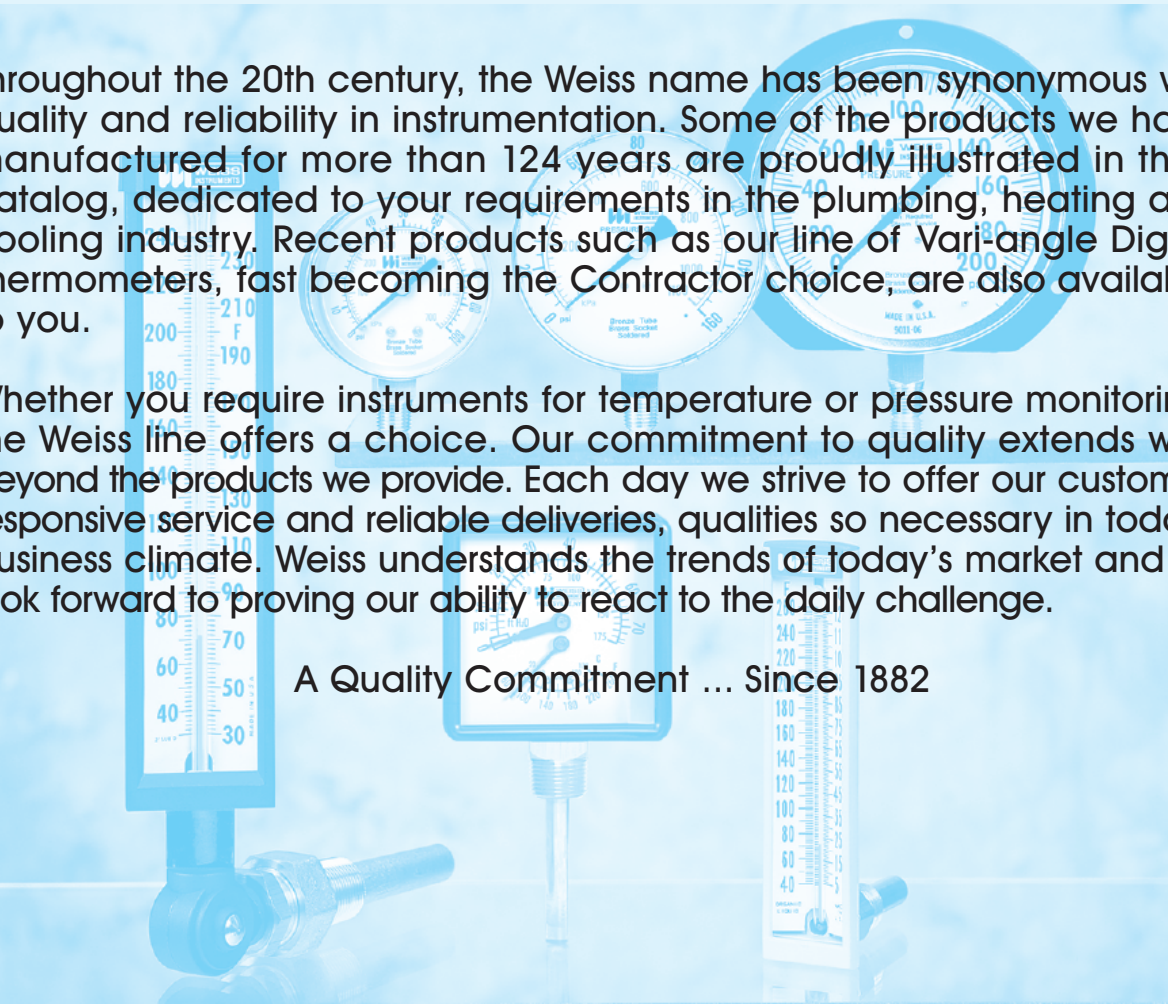
Temperature, Pressure Instruments



Find Quality Products Online at:

www.GlobalTestSupply.com

sales@GlobalTestSupply.com



Throughout the 20th century, the Weiss name has been synonymous with quality and reliability in instrumentation. Some of the products we have manufactured for more than 124 years are proudly illustrated in this catalog, dedicated to your requirements in the plumbing, heating and cooling industry. Recent products such as our line of Vari-angle Digital Thermometers, fast becoming the Contractor choice, are also available to you.

Whether you require instruments for temperature or pressure monitoring, the Weiss line offers a choice. Our commitment to quality extends well beyond the products we provide. Each day we strive to offer our customers responsive service and reliable deliveries, qualities so necessary in today's business climate. Weiss understands the trends of today's market and we look forward to proving our ability to react to the daily challenge.

A Quality Commitment ... Since 1882

INDEX

| | |
|---|---------------|
| Industrial Thermometers | Page 3 |
| Six Inch and Thrift Line Industrial Thermometers | 4 |
| Six Inch Hot & Chilled Water, Hot Water Bimetal and General Purpose Thermometers | 5 |
| Bimetal Dial Thermometers | 6 |
| Vapor Actuated Dial Thermometers | 7 |
| Digital Vari-angle Thermometers | 8 |
| Trade Line and HVAC Pressure Gauges | 9 |
| Industrial Pressure Gauges | 10 |
| Process Pressure Gauges | 11 |
| Stainless Steel Industrial Gauges | 12 |
| Low Pressure Diaphragm Gauges and Tri-o-meters | 13 |
| Diaphragm Seals | 14 |
| Gauge Accessories and Hand Held Digital Thermometers | 15 |

INDUSTRIAL GLASS THERMOMETERS

The Weiss 7" and 9" Vari-angle® is molded of GE Valox® polyester, 40% glass/mineral reinforced. This particular material has excellent strength, impact and stiffness properties which makes it perfect for the toughest applications. Some of the uses are process piping, tanks, pipelines in building construction, boilers and air ducts. The Vari-angle is a versatile thermometer that can be adjusted easily for optimum readability. Furnished in ranges up to and including 300°F.

® Vari-angle is a registered trademark of Weiss Instruments, Inc.

FILL: Weiss "Blue Ribbon Liquid" is non-toxic and environmentally safe.

CASE: Modern V-shape design with parts molded of GE Valox polyester, in black textured finish. Heavy glass protected front firmly secured against rattles by spring action.

STEM: For 31/2" stems only and ranges up to and including 300°F, the stem material is a precision die cast Zamac alloy. For ranges above 300°F, bulb chamber is a precision machined aluminum alloy with copper plated steel stem extension. *For Separable Socket connections only.*

® Valox is a registered trademark of the General Electric Co.



ARI-ANGLE AIR DUCT THERMOMETERS

| 9" SCALE | CAT NO. |
|------------|---------|
| 31/2" STEM | 9VD35 |
| 6" STEM | 9VD6 |
| 9" STEM | 9VD9 |
| 12" STEM | 9VD12 |

ADD RANGE CODE FROM RANGE TABLE LISTING. **EX: 9VD6-180 (RANGE 30-180°F)**
ABOVE CAT. NUMBERS INCLUDE A REVERSIBLE DUCT MOUNTING FLANGE.



ARI-ANGLE INDUSTRIAL THERMOMETERS

| 7" SCALE | CAT NO. |
|------------|---------|
| 31/2" STEM | 7VU35 |
| 6" STEM | 7VU6 |
| 9" STEM | 7VU9 |
| 12" STEM | 7VU12 |

ADD RANGE CODE FROM RANGE TABLE LISTING. **EX: 9VU35-240 (RANGE 30-240°F)**
ABOVE CATALOG NUMBERS **DO NOT INCLUDE SOCKETS** - ORDER SEPARATELY FROM THERMOWELL TABLE LISTING.

| 9" SCALE | CAT NO. |
|------------|---------|
| 31/2" STEM | 9VU35 |
| 6" STEM | 9VU6 |
| 9" STEM | 9VU9 |
| 12" STEM | 9VU12 |

VARI-ANGLE ALUMINUM INDUSTRIAL THERMOMETERS

| 7" SCALE | CAT NO. | 9" SCALE | CAT NO. |
|------------|---------|------------|---------|
| 31/2" STEM | A7VD35 | 31/2" STEM | A9VU35 |
| 6" STEM | A7VD6 | 6" STEM | A9VU6 |
| 9" STEM | A7VD9 | 9" STEM | A9VU9 |
| 12" STEM | A7VD12 | 12" STEM | A9VU12 |

ADD RANGE CODE FROM RANGE TABLE LISTING. **EX: 9VD6-180 (RANGE 30-180°F)**
ABOVE CAT. NUMBERS INCLUDE A REVERSIBLE DUCT MOUNTING FLANGE.

| °F RANGES | SCALE DIV. | RANGE CODE |
|------------|------------|------------|
| 40-0-110°F | 2° | 110 |
| 0-120°F | 1° | 120 |
| 0-160°F | 2° | 160 |
| 30-180°F | 2° | 180 |
| 30-240°F | 2° | 240 |
| 30-300°F | 5° | 300 |
| 50-400°F | 5° | 400 |
| 50-550°F | 5° | 500 |

All Ranges 400°F (200°C) and higher are furnished in Aluminum Case.

THERMOWELLS AND ACCESSORIES

| STEM LENGTH | BRASS CAT NO. | 304SS CAT NO. | 316SS CAT NO. | NPT | INSERTION (U) | LAG EXTENSION (L) |
|-------------|---------------|---------------|---------------|-----|---------------|-------------------|
| 3 1/2" | E35-75BS | E35-75SS | E35-75316SS | 3/4 | 2 1/2 | — |
| 6" | ER6-75BS | ER6-75SS | ER6-75316SS | 3/4 | 5 | — |
| 9" | ER9-75BS | ER9-75SS | ER9-75316SS | 3/4 | 8 | — |
| 12" | ER12-75BS | ER12-75SS | ER12-75316SS | 3/4 | 11 | — |
| 3 1/2" | ESS35-50BS | ESS35-50SS | ESS35-50316SS | 1/2 | 2 | 1 |
| 3 1/2" | ESS35-75BS | ESS35-75SS | ESS35-75316SS | 3/4 | 2 | 1 |
| 6" | EN6-75BS | EN6-75SS | EN6-75316SS | 3/4 | 2 1/2 | 2 1/2 |
| 9" | ENS9-75BS | ENS9-75SS | ENS9-75316SS | 3/4 | 5 1/2 | 2 1/2 |
| 12" | ENS12-75BS | ENS12-75SS | ENS12-75316SS | 3/4 | 8 1/2 | 2 1/2 |

Catalog No. ECC - Brass Cap and Chain Assembly for Test Well

SIX INCH INDUSTRIAL THERMOMETERS



The Weiss 6" Navy Class Thermometer is compactly designed, ruggedly constructed and has excellent readability. The blue-reading liquid-in-glass tube maintains accuracy despite vibrations and shock.

This economical thermometer is built for general hydronic applications such as chilled and hot water lines and all small piping networks. It is especially adaptable to equipment operating under continuous vibrating conditions.

FILL: Weiss "Blue Ribbon Liquid" is non-toxic and environmentally safe.

CASE: Attractive modern design; V-shaped gray Valox case. Wide angle construction allows full scale width for easy reading.

STEM ASSEMBLY: Standard fittings of all brass construction which insures proper response to temperature changes. Standard dual threaded socket for 1/2" and 3/4" NPT. Meets all current military specifications (Army, Navy, Air Force).

NAVY CLASS THERMOWELLS

| STRAIGHT FORM | CAT NO. | ANGLE FORM | CAT NO. | BRASS | 304SS | 316SS | STEM | INSERTION U |
|---------------|---------|------------|---------|---------|---------|------------|------|-------------|
| 2" STEM | 5SS2 | 2" STEM | 5AS2 | E13S-BS | E13S-SS | E13S-316SS | 2" | 1 5/16" |
| 4" STEM | 5SS4 | 4" STEM | 5AS4 | E13L-BS | E13L-SS | E13L-316SS | 4" | 3 5/16" |

ADD RANGE CODE FROM RANGE TABLE LISTING. EX: 5AS2-240 (RANGE 30-240F)
ABOVE CATALOG NUMBERS **DO NOT INCLUDE SOCKETS** - ORDER SEPARATELY FROM THERMOWELL TABLE LISTING.

THRIFT LINE THERMOMETERS



Same Features as Navy Class Thermometer except:

STEM & SOCKET ASSEMBLY: All brass stem. Removable socket secured to stem by set-screw. Socket standard in brass with 1/2" NPT.

| | |
|---------------|---------------|
| STRAIGHT FORM | CAT NO. TL5S2 |
| ANGLE FORM | CAT NO. TL5A2 |

ADD RANGE CODE FROM RANGE TABLE LISTING.
EX: TL5S2-240 (RANGE 30-240F). ABOVE CATALOG NUMBERS **DO NOT INCLUDE SOCKETS** ORDER SEPARATELY FROM THERMOWELL TABLE LISTING.

THRIFT LINE THERMOWELLS

| CAT NO. | NPT | INSERTION U |
|---------|------|-------------|
| SF12-BS | 1/2" | 1 3/8" |
| SF34-BS | 3/4" | 1 3/8" |

| °F RANGES | SCALE DIV. | RANGE CODE |
|------------|------------|------------|
| 40-0-110°F | 2° | 110 |
| 20-120°F | 2° | 120 |
| 20-180°F | 2° | 180 |
| 30-240°F | 2° | 240 |
| 30-300°F | 5° | 300 |
| 50-400°F | 5° | 400 |

SIX INCH HOT & CHILLED WATER THERMOMETERS

The Weiss 6" Hot & Chilled Water Thermometer is our most economical offering in industrial glass thermometers. The unit features components of non-corrosive materials and its compact design and excellent readability makes the HW & CW Series ideal for a variety of general purpose applications. Typical applications include small pipe lines, residential and commercial boilers, solar heating systems.

SCALE LENGTH: 5 1/2"

SCALE: White coated aluminum with permanently baked black markings.

TUBE: Magnifying blue liquid.

CASE: Molded V-shaped GE Valox® in gray textured finish.

RANGE: Hot Water 40-260°F (2° div.) and 5-125°C (1° div.)
Chilled Water -40-120°F (2° div.) and -40-50°C (1° div.)

CONNECTION: Brass 1/2" NPT.

HOT WATER

CHILLED WATER

STRAIGHT FORM
ANGLE FORM

CAT NO. HW5S2
CAT NO. HW5A2

CAT NO. CW5S2
CAT NO. CW5A2

COMPLETE WITH 1/2" NPT BRASS CONNECTION WITH 1-3/8" INSERTION.



HOT WATER BIMETAL DIAL THERMOMETERS

Weiss' most economical offering in the dial thermometers is ideal for a number of general heating applications including small pipelines. Units are furnished with 1/2" NPT brass removable socket or 3/4" sweat connection.

| DESCRIPTION | DIAL SIZE | CAT. NO. | RANGE | FITTING |
|-------------------|-----------|----------|------------|----------|
| HOT WATER BIMETAL | 2 1/2" | HWBM25 | 32-250 F&C | 1/2" NPT |
| | 4" | HWBM40 | 32-250 F&C | 1/2" NPT |
| | 2 1/2" | HWBM25S | 32-250 F&C | 3/4" NPT |
| | 4" | HWBM40S | 32-250 F&C | 3/4" NPT |



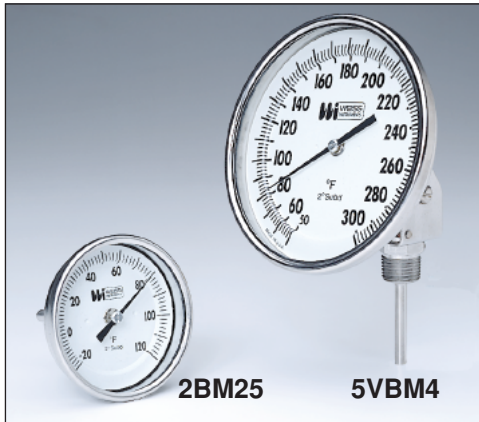
GENERAL PURPOSE THERMOMETERS

The instruments illustrated here are general purpose type. The group consists of bimetal dial, glass pocket clip and pocket digital thermometers.

| DESCRIPTION | CAT. NO. | RANGE |
|-----------------------------|----------|-------------|
| DIAL THERMOMETERS | | |
| POCKET DIAL | PT125 | 25-125F |
| POCKET DIAL | PT180 | 40-0-180F |
| POCKET DIAL | PT220 | 0-220F |
| 1 3/4" DIAL | 134-160 | 40-0-160F |
| 1 3/4" DIAL | 134-220 | 0-220F |
| GLASS THERMOMETERS | | |
| POCKET GLASS | PLC120 | 30-0-120F |
| POCKET GLASS | PLC220 | 0-220F |
| DIGITAL THERMOMETERS | | |
| POCKET DIGITAL/AUTO OFF | DP300 | 58-0-302F&C |



BIMETAL DIAL THERMOMETERS



Weiss offers a complete line of Commercial Bimetal Thermometers in 2", 3" and 5" dial sizes. All versions are hermetically sealed and silicone dampened for optimum performance in most industrial applications. A recalibration feature is standard on the Vari-angle types. Other 3" and 5" dial forms are available with or without a reset feature for a wider customer choice and savings.

CASE: The entire case assembly is of Type 304 Stainless Steel. To insure a moisture proof unit, the heavy glass face is securely gasketed with the case and bezel assembly, hermetically sealed.

STEM ASSEMBLY: The stem and fixed thread connection is fabricated of stainless steel. All welded construction insures complete corrosion resistance. Model BM, RBM and VBM stem diameter is 1/4" and for 2" dials the fixed thread is 1/4" NPT, 3" and 5" dials are 1/2" NPT.

MODEL 2BM - 2" Angle

| CAT NO. | Stem Length* | NPT |
|---------|--------------|------|
| 2BM25 | 21 1/2" | 1/4" |
| 2BM4 | 4" | 1/4" |
| 2BM6 | 6" | 1/4" |
| 2BM9 | 9" | 1/4" |
| 2BM12 | 12" | 1/4" |

MODEL 3BM, 3" Angle - 3BMS, 3" Straight

| CAT NO. | Stem Length* | NPT |
|--------------|--------------|------|
| 3BM25 3BMS25 | 21 1/2" | 1/2" |
| 3BM4 3BMS4 | 4" | 1/2" |
| 3BM6 3BMS6 | 6" | 1/2" |
| 3BM9 3BMS9 | 9" | 1/2" |
| 3BM12 3BMS12 | 12" | 1/2" |

MODEL 5BM, 5" Angle - 5BMS, 5" Str

| CAT NO. | Stem Length* | NPT |
|--------------|--------------|------|
| 5BM25 5BMS25 | 21 1/2" | 1/2" |
| 5BM4 5BMS4 | 4" | 1/2" |
| 5BM6 5BMS6 | 6" | 1/2" |
| 5BM9 5BMS9 | 9" | 1/2" |
| 5BM12 5BMS12 | 12" | 1/2" |

MODEL 3RBM, 3" Angle - 3RBMS, 3" Straight

| CAT NO. | Stem Length* | NPT |
|----------------|--------------|------|
| 3RBM25 3RBMS25 | 21 1/2" | 1/2" |
| 3RBM4 3RBMS4 | 4" | 1/2" |
| 3RBM6 3RBMS6 | 6" | 1/2" |
| 3RBM9 3RBMS9 | 9" | 1/2" |
| 3RBM12 3RBMS12 | 12" | 1/2" |

Series RBM with Recalibrator

MODEL 5RBM, 5" Angle - 5RBMS, 5" Str

| CAT NO. | Stem Length* | NPT |
|----------------|--------------|------|
| 5RBM25 5RBMS25 | 21 1/2" | 1/2" |
| 5RBM4 5RBMS4 | 4" | 1/2" |
| 5RBM6 5RBMS6 | 6" | 1/2" |
| 5RBM9 5RBMS9 | 9" | 1/2" |
| 5RBM12 5RBMS12 | 12" | 1/2" |

MODEL 3VBM, 3" Vari-angle

| CAT NO. | Stem Length* | NPT |
|---------|--------------|------|
| 3VBM25 | 21 1/2" | 1/2" |
| 3VBM4 | 4" | 1/2" |
| 3VBM6 | 6" | 1/2" |
| 3VBM9 | 9" | 1/2" |
| 3VBM12 | 12" | 1/2" |



MODEL 5VBM, 5" Vari-angle

| CAT NO. | Stem Length* | NPT |
|---------|--------------|------|
| 5VBM25 | 21 1/2" | 1/2" |
| 5VBM4 | 4" | 1/2" |
| 5VBM6 | 6" | 1/2" |
| 5VBM9 | 9" | 1/2" |
| 5VBM12 | 12" | 1/2" |

*Includes thread. Longer stem lengths available.

NOTE: When ordering Silicone Filled Bimetals add Prefix **SF** to appropriate Catalog No. **Ex: SF5RBM25**

| FAHRENHEIT | FIG. INTER. | SCALE DIV. | CELSIUS | FIG INTER. | SCALE DIV. | DUAL SCALE - F&C | |
|------------|-------------|------------|-----------|------------|------------|------------------|------------|
| -80/0/120 | 20° | 2° | -50/0/50 | 10° | 1° | -80/0/120F | -60/0/50C |
| -20/0/120 | 20° | 2° | **0/50 | 5° | 1/2° | -20/0/120F | -30/0/50C |
| **30/130 | 10° | 1° | 0/100 | 10° | 1° | **30/130F | 0/55C |
| 0/200 | 20° | 2° | 0/150 | 10° | 1° | 0/200F | -15/0/90C |
| 0/250 | 20° | 2° | 0/200 | 20° | 2° | 0/250F | -20/0/120C |
| 50/300 | 20° | 2° | 0/300 | 50° | 2° | 50/300F | 10/150C |
| 50/400 | 50° | 5° | *0/450 | 50° | 5° | 50/400F | 10/200C |
| 50/550 | 50° | 5° | **100/550 | 50° | 5° | 50/550F | 10/260C |
| *100/800 | 100° | 10° | | | | *100/800F | 40/425C |
| **200/1000 | 100° | 10° | | | | **200/1000F | 100/540C |

* Satisfactory for continuous service up to 800°F or 425°C. Can be used for intermittent service from 800-1000°F or 425-500°C.

* Minimum stem length for these ranges is 4". ** Minimum stem length is 4" Straight and Vari-angle Form.

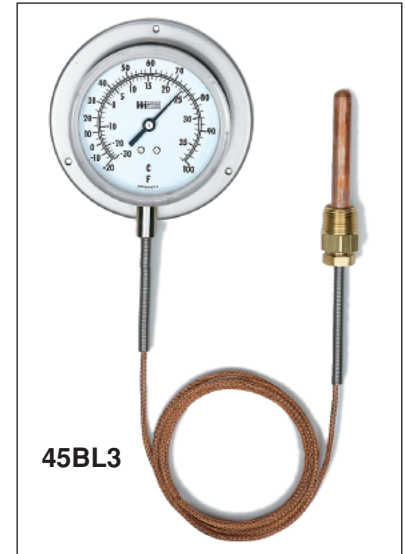
| SEPARABLE SOCKETS FOR 3" AND 5" ONLY | | | | DUCT MOUNTING FLANGES | |
|--------------------------------------|------------|--------------|----------|-----------------------|----------------|
| CAT. NO. | STEM LGTH. | INSERT LGTH. | | CAT. NO. | INSERTION |
| 3/4" NPT | B25 | 21/2 | 1 | BF3 | STANDARD |
| | B35 | 4 | 21/2 | BF3-2 | EXTENSION NECK |
| | BR6 | 6 | 41/2 | | |
| | BR9 | 9 | 71/2 | | |
| | BR12 | 12 | 101/2 | | |
| CAT. NO. | STEM LGTH. | INSERT LGTH. | LAG EXT. | | |
| 3/4" NPT | BSS35 | 4 | 11/2 | | |
| | BN6 | 6 | 21/2 | | |
| | RN9 | 9 | 41/2 | | |

VAPOR ACTUATED DIAL THERMOMETERS

Offered in 31/2" and 41/2" dial sizes, these thermometers are furnished in four stainless steel case configurations for direct, surface or panel mounting. The following coding chart illustrates a wide variety of bulb styles, capillaries and process connection fittings. The versatility of configurations makes these thermometers well suited to a wide range of applications including hot and chilled water pipeline systems, tanks and air ducts.

| CODE | CATALOG NO. | DESCRIPTION |
|------------|--|--|
| I | 35 | CASE SIZE 31/2" Case |
| | 45 | 41/2" Case |
| II | V | CASE TYPE Vari-angle® Direct Mount |
| | B | Back Flange, Surface Mount |
| | R | Semi-flush, Panel Mount |
| | Z | Adjustable Bracket, Remote Mount |
| III | A | CASE CONNECTION Adjustable |
| | B | Back Connection |
| | R | Semi-flush, Panel Mnt., Stainless Steel |
| | L | Lower Connection |
| IV | 3 | CASE WINDOW Snap in Lexan with "O" Ring |
| V | | THERMAL SYSTEM |
| | 0 | Bulb Type Union Bulb Material Copper (Vari-angle only) Capillary Material Capillary Protection |
| | 2 | Plain Copper Cu. Braid |
| | 3 | Plain 316 S.S. 316 S.S. None |
| | 5 | Union Copper Copper Cu. Braid |
| | 7 | Union 316 S.S. Copper Cu. Braid |
| | 8 | Union 316 S.S. 316 S.S. Intlock Armor* |
| | 9 | Union 316 S.S. 316 S.S. None |
| | *At bulb end 31/2" long. All systems have S.S. Spring capillary protection at indicating head. No. 5-7 system include S.S. spring at bulb end - S.S. jam nut standard on No. 8-9 system. | |
| | | |
| VI | | BULB SELECTION |
| | | Thermal System No. 5 Thru 9 (Union) Thermal System No. 2 & 3 (Plain) Max. System Len. |
| | 1 | Dia. 7/16 Length 2.5" Dia. N.A. Length N.A. 10Ft. |
| | 2* | 7/16 3.4" 3/8 3.4 25Ft. |
| | 3* | 7/16 5.4" 3/8 4.9 50Ft. |
| | 4 | 7/16 7.4" 3/8 7.9 99Ft. |
| | 5 | 7/16 9.4" 3/8 9.4 99Ft. |
| | X | 1/8" x 180" Averaging Bulb 10Ft. |
| | 6 | N.A. N.A. 3/8 2.5 05Ft. |
| | *Only No. 2&3 bulbs are options for Vari-angle. | |

| STANDARD RANGES* | | |
|---|---------|----------|
| -40-0-60F | 0-150F | 30-300F |
| -20-0-100F | 0-180F | 100-350F |
| -40-0-110F | 40-240F | 60-260F |
| *All Ranges available in Dual Scale, F&C. | | |



| | | |
|------------------|-------------------|---|
| VII | | PROCESS CONNECTION FITTING |
| | 1 | Union Connection 1/2" NPT |
| | 2 | Union Connection 3/4" NPT |
| | 3 | Separable Socket 1/2" NPT |
| | 4 | Separable Socket 3/4" NPT |
| | 5 | Separable Socket 1/2" NPT with 2" Lag Extension (No.3 Bulb only) |
| | 6 | Separable Socket 3/4" NPT with 2" Lag Extension (No.3 Bulb only) |
| | 7 | Air Duct Flange, Union Conn., Aluminum only |
| | 9 | Plain bulb, no fitting |
| VIII | | PROCESS CONNECTION MATERIAL |
| | 1 | Brass |
| | 2 | 304 Stainless Steel |
| | 3 | 316 Stainless Steel |
| | 5 | Aluminum (Air Duct Flange only) |
| | 0 | None - Plain Bulb |
| IX A-B | See Example Below | SYSTEM LENGTH SPECIFYING |
| | | 9A - Use 2 digits: EX. 05, 10, 99 for length required. 9B - Use FT for feet, use IN for inches |

EXAMPLE FOR OBTAINING COMPLETE CATALOG NUMBER FROM CODES - SERIES VTR

CODE I-IV (HEAD ASSY) CODE V-VIII (THERMAL SYSTEM) CODE IX A - B (CAPILLARY LENGTH)

4 5 B L 4 — **5 2 3 1** — **0 5 F T**

RANGE
40-240 F

EXAMPLE FOR OBTAINING COMPLETE CATALOG NUMBER FROM CODES - SERIES VTA

CODE I-IV (HEAD ASSY) CODE V-VIII (THERMAL SYSTEM)

4 5 V A 3 — **0 2 3 1**

RANGE
40-0-60 F&C

DIGITAL VARI-ANGLE THERMOMETER



SPECIFICATIONS

| | | |
|---------------------------|---|--|
| CASE | Hi-impact ABS | |
| RANGE | -50/300°F -45/150°C | |
| DISPLAY | 3/8" LCD digits, wide ambient formula | |
| ACCURACY | 1% of reading or 1° whichever is greater | |
| RESOLUTION | 1/10° between -19.9/199.9°F (-28/93 °C) | |
| RECALIBRATION | Internal potentiometer | |
| LUX RATING | 10 Lux (one foot-candle) | |
| UPDATE | 10 seconds | |
| AMBIENT OPERATING | -30/140°F (-35/60 °C) | |
| AMBIENT TEMP ERROR | Zero | |
| HUMIDITY | 100% | |
| SENSOR | Glass passivated thermistor | |
| STEM ASSEMBLIES | INDUSTRIAL GLASS | BIMETALLIC |
| | Full conformance with Fed Spec GG-T-321D. | Full conformance with ASME B40.3-1990. |
| | Fully interchangeable with Industrial Glass Thermometers. | Fully interchangeable with Bimetallic Dial Thermometers. |

The Weiss patented* Digital Vari-angle® Thermometer maintains the strict requirements for thermometers in hydronic applications in that they're self-powered and within 1% accuracy. This reliable series of digital thermometers offers the added feature of stem assemblies for direct replacement of mercury-in-glass types where environmental concerns exist. Whether on new installations or replacements, our Vari-angle Digital Thermometers include the same level of quality that the industry associates with the Vari-angle trademark and all Weiss Products.

*Patent No. 5,196,781 ©Vari-angle is a registered trademark of Weiss Instruments, Inc.

| CAT. NO. | DESCRIPTION | IDN |
|-----------|-----------------------------|-------|
| DVU35 | 3 1/2" Industrial Stem | 62100 |
| DVU6 | 6" Industrial Stem | 62110 |
| E35-75BS* | 3/4" NPT 3 1/2" Socket | 20300 |
| ER6-75BS* | 3/4" NPT 6" Socket | 20500 |
| EN6-75BS* | 3/4" NPT 6" Ext. Socket | 20501 |
| DVBM25 | 2 1/2" x 1/2" NPT Stem | 62120 |
| DVBM4 | 4" x 1/2" NPT Stem | 62130 |
| DVBM6 | 6" x 1/2" NPT Stem | 62140 |
| DVD6 | 6" Stem w/ Duct Mtg. Flange | 62310 |
| DVD9 | 9" Stem w/ Duct Mtg. Flange | 62320 |

*For use with DVU thermometers on new installations.

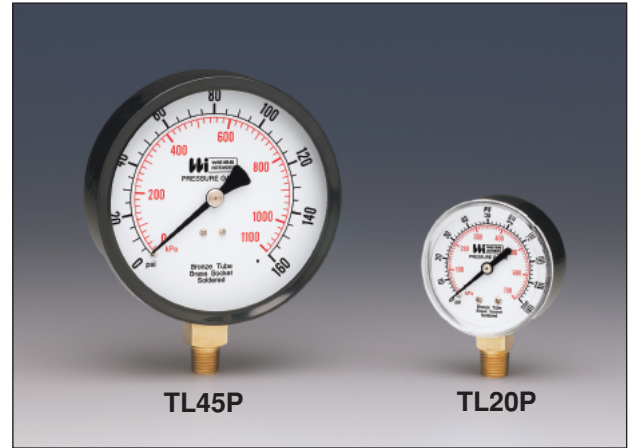


| Cat No. | Description | IDN |
|---------|--|-------|
| DVC-4 | Outdoor Waterproof Cover (4 pcs per pack) | 62410 |

TRADE LINE PRESSURE GAUGES

Weiss TL Gauges are intended for general service conditions, for pressure or vacuum on air, oil, water, gas or other mediums that do not attack brass. TL Gauges are furnished in drawn steel cases, finished in black. The 1 1/2" dials are supplied with 1/8" NPT and 2" dial versions are available with 1/4" or 1/8" NPT connections. All other dial sizes are 1/4" NPT. All gauges conform with ANSI B40.1 accuracy Grade B-2% mid scale.

| PRESSURE | | |
|----------|--------------|---------------|
| RANGE | GRADUATIONS | FIG. INTERVAL |
| 0-15 | 0.5 | 1 |
| 0-30 | 0.5 | 5 |
| 0-60 | 1 | 5 |
| 0-100 | 2 | 10 |
| 0-160 | 5 | 20 |
| 0-200 | 5 | 20 |
| 0-300 | 5 | 30 |
| 0-400 | 10 | 50 |
| 0-600 | 10 | 50 |
| COMPOUND | | |
| 30-0-15 | 1" Hg.-0.5p | 5" Hg.-3p |
| 30-0-30 | 1" Hg.-1p | 10" Hg.-5p |
| 30-0-60 | 2" Hg.-1p | 10" Hg.-10p |
| 30-0-100 | 5" Hg.-2p | 15" Hg.-10p |
| 30-0-150 | 5" Hg.-2p | 30" Hg.-20p |
| VACUUM | | |
| 30"-0 | 0-5" In. Hg. | 5" In. Hg. |



| TO SPECIFY | | | | | | | |
|------------------------------|----------|--------|----------|------------|-------------|------------|-------|
| SIZE | PRESSURE | VACUUM | COMPOUND | CASE STYLE | NPT | MOUNT | RANGE |
| 1 1/2" | TL15P | TL15V | N/A | U* | 1/8" | LM♦or CBM* | — |
| 2" | TL20P | TL20V | TL20VP | U or F** | 1/8 or 1/4" | LM or CBM | — |
| 2 1/2" | TL25P | TL25V | TL25VP | U or F | 1/4" | LM or CBM | — |
| 3 1/2" | TL35P | TL35V | TL35VP | N/A | 1/4" | LM or CBM | — |
| 4 1/2" | TL45P | TL45V | TL45VP | N/A | 1/4" | LM | — |
| Ex: TL20P-U 1/4" CBM 0-30psi | | | | | | | |

*U - U Clamp. **F - Front Flange. ♦LM - Lower Mount. *CBM - Center Back Mount

HVAC PRESSURE GAUGES

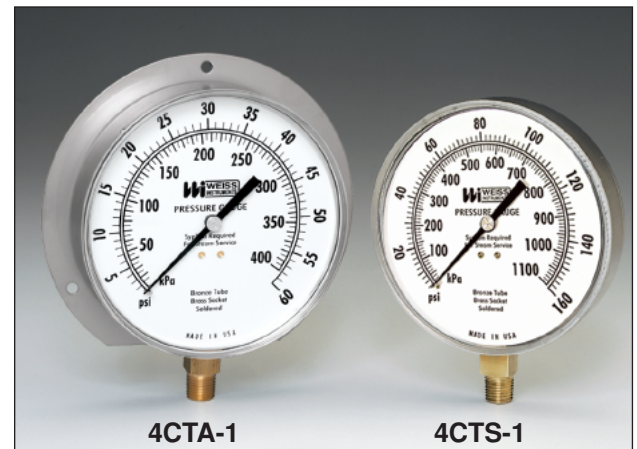
Weiss 4 1/2" CTS/CTA Pressure Gauges are designed to meet the standard specifications for Heating, Cooling and Air Conditioning applications. The CTS has a stainless steel case for stem mount and the CTA is an aluminum back flange case for either stem or surface mounting. Both versions conform with ANSI B40.1 accuracy Grade A-1% mid scale.

POINTER: Balanced adjustable aluminum.

DIAL: White coated metal, lithographed with black graduation lines and numerals.

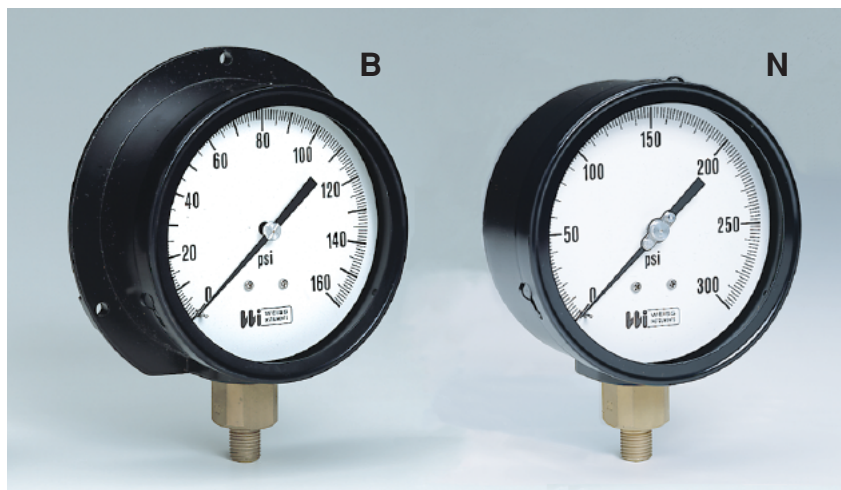
MOVEMENT: Brass construction.

BOURDON TUBE & SOCKET: Phosphor bronze bourdon. Brass stock socket 9/16" square wrench surface and 1/4" NPT lower connection. Soft-soldered construction.



| PRESSURE | | | COMPOUND | | |
|----------|-------------|---------------|-----------|--------------|---------------|
| RANGE | GRADUATIONS | FIG. INTERVAL | RANGE | GRADUATIONS | FIG. INTERVAL |
| 0-15 | 0.2 | 1 | 30-0-15* | 1" Hg.-0.5p | 10" Hg.-5p |
| 0-30 | 0.5 | 5 | 30-0-30 | 1" Hg.-0.5p | 10" Hg.-10p |
| 0-60 | 1 | 5 | 30-0-60 | 1" Hg.-1p | 10" Hg.-10p |
| 0-100 | 1 | 10 | 30-0-100 | 2" Hg.-1p | 30" Hg.-20p |
| 0-160 | 2 | 20 | 30-0-150* | 2" Hg.-2p | 30" Hg.-20p |
| 0-200 | 2 | 20 | 30-0-300* | 10" Hg.-5p | 30" Hg.-50p |
| 0-300 | 5 | 50 | VACUUM | | |
| 0-400 | 5 | 50 | 30"-0 | 0-5" In. Hg. | 5" In. Hg. |
| 0-600 | 10 | 50 | | | |

INDUSTRIAL PRESSURE GAUGES



The Weiss Series 088 Gauges are ideal for use on boilers, compressors, pumps, and any industrial applications that require a heavy duty internal gauge. Our 4 1/2" case styles have a glass window, solid back with safety blow out disc standard. Available in two case styles- Style B: Aluminum Back Flange and Style N: Aluminum No Flange, all have 1/4" NPT lower mount connection. Optional 1/2" NPT available.

| TO SPECIFY | | | | | |
|---|----------|-----------------|------|-------|-------|
| SIZE | CAT. NO. | CASE STYLE | NPT | MOUNT | RANGE |
| 4 1/2" | 4PG_-1 | B - Back Flange | 1/4" | LM* | — |
| 4 1/2" | 4UG_-1 | N - No Flange | 1/4" | LM | — |
| Ex: 4PGN-1 1/4" LM 0-160psi *LM - Lower Mount | | | | | |

| CAT. NO. | POINTER | RANGE LIMITS | BOURDON TUBE | MOVEMENT | SOCKET | ACCURACY |
|----------|-----------------------|-----------------------|--|-------------------------|--------|-------------------------|
| PG-1 | SLOTTED ADJUSTABLE | VACUUM THRU 0-600 psi | "C" PHOSPHOR BRONZE SILVER BRAZED JOINTS | BRASS BUSHED ROTARY | BRASS | 1% ANSI GRADE A |
| UG-1 | MICROMETER ADJUSTABLE | VACUUM THRU 0-600 psi | "C" PHOSPHOR BRONZE SILVER BRAZED JOINTS | STN. STL. BUSHED ROTARY | BRASS | 1/2 of 1% ANSI GRADE 2A |

| PRESSURE | | | COMPOUND | | |
|----------|-------------|---------------|----------|---------------|---------------|
| RANGE | GRADUATIONS | FIG. INTERVAL | RANGE | GRADUATIONS | FIG. INTERVAL |
| 0-15 | 0.1 | 1 | 30-0-15 | 0.5" Hg.-0.2p | 5" Hg.-3p |
| 0-30 | 0.2 | 5 | 30-0-30 | 1" Hg.-0.5p | 10" Hg.-5p |
| 0-60 | 0.5 | 5 | 30-0-60 | 1" Hg.-1p | 10" Hg.-10p |
| 0-100 | 1 | 10 | 30-0-100 | 2" Hg.-1p | 10" Hg.-10p |
| 0-160 | 1 | 20 | 30-0-150 | 5" Hg.-2p | 10" Hg.-20p |
| 0-200 | 2 | 20 | 30-0-300 | 5" Hg.-2p | 30" Hg.-25p |
| 0-300 | 2 | 50 | VACUUM | | |
| 0-400 | 5 | 50 | 30"-0 | 0.2" In. Hg. | 5" In. Hg. |
| 0-600 | 5 | 50 | | | |

PROCESS PRESSURE GAUGES

The 4 1/2" Process Gauge is designed for those severe service applications where operator safety is a factor. This solid front gauge is equipped with a solid wall separating the indicating dial from the bourdon tube and a blow-out back which will release from the case if the bourdon tube should rupture.

Available with phosphor bronze/brass, 316 stainless steel or monel internals, liquid-filled or dry construction, this gauge is ideally suited for the requirements of the Process, Power and Chemical Industries. This high quality gauge offers the benefit of field filling without any additional kits or accessories.



NF4UGY1 NON-FILLED / LF4UGY1 LIQUID FILLED

SOCKET: Brass
BOURDON TUBE: Phosphor bronze - C tube to 600 psi. AISI 316 stainless steel coiled tube 1000 psi and above.
CONNECTING JOINTS: Silver brazed
MOVEMENT: Bushed stainless steel
DIAL: White aluminum, black & red markings (psi & kPa)
POINTER: Black aluminum, micrometer adjustable
CASE: Black impact resistant phenolic
WINDOW: Acrylic
RING: Reinforced polypropylene
GASKETS: Ethylene propylene
ACCURACY: 0.5% ASME B40.1 Grade 2A
CONNECTIONS: 1/4" or 1/2" NPT lower or lower back
CAT. NO. LF4UGY1: Lower connection only.

NF4UGY2 NON-FILLED / LF4UGY2 LIQUID FILLED

SOCKET: AISI 316 stainless steel
BOURDON TUBE: AISI 316 S.S. - C tube to 600 psi. Coiled tube 1000 psi and above.
CONNECTING JOINTS: Welded
MOVEMENT: Bushed stainless steel
DIAL: White aluminum, black & red markings (psi & kPa)
POINTER: Black aluminum, micrometer adjustable
CASE: Black impact resistant phenolic
WINDOW: Acrylic
RING: Reinforced polypropylene
GASKETS: Ethylene propylene
ACCURACY: 0.5% ASME B40.1 Grade 2A
CONNECTIONS: 1/4" or 1/2" NPT lower or lower back
CAT. NO. LF4UGY2: Lower connection only.

| PRESSURE | | | COMPOUND | | |
|----------|-------------|---------------|------------|---------------|---------------|
| RANGE | GRADUATIONS | FIG. INTERVAL | RANGE | GRADUATIONS | FIG. INTERVAL |
| 0-15 | 0.1 | 1 | 30-0-15 | 0.5" Hg.-0.2p | 5" Hg.-3p |
| 0-30 | 0.2 | 5 | 30-0-30 | 1" Hg.-0.5p | 10" Hg.-5p |
| 0-60 | 0.5 | 5 | 30-0-60 | 1" Hg.-1p | 10" Hg.-10p |
| 0-100 | 1 | 10 | 30-0-100 | 2" Hg.-1p | 10" Hg.-10p |
| 0-160 | 1 | 20 | 30-0-150 | 5" Hg.-2p | 10" Hg.-20p |
| 0-200 | 2 | 20 | 30-0-300 | 5" Hg.-2p | 30" Hg.-25p |
| 0-300 | 2 | 50 | VACUUM | | |
| 0-400 | 5 | 50 | bar -1-0 | 0.01 | 0.1 |
| 0-600 | 5 | 50 | kPa -100-0 | 1 | 10 |
| 0-800 | 10 | 100 | 30"-0 | 0.2" In. Hg. | 5" In. Hg. |
| 0-1000 | 10 | 100 | | | |
| 0-1500 | 10 | 200 | | | |
| 0-2000 | 20 | 200 | | | |
| 0-3000 | 20 | 500 | | | |
| 0-5000 | 50 | 500 | | | |
| 0-10000 | 100 | 1000 | | | |
| 0-20000 | 200 | 2000 | | | |

STAINLESS STEEL INDUSTRIAL GAUGES



Where vibration, corrosion and pulsating conditions exist, the Weiss line of stainless steel cased liquid filled and dry construction industrial pressure gauges are designed to meet the most severe applications. This series of instruments includes a wide range of accuracies, case patterns and construction materials to cover most requirements.

LIQUID FILLED

| CAT. NO. | DIAL SIZE | INTERNALS | ACCURACY | NPT |
|----------|-----------|-----------|----------|--------------|
| LF251 | 2 1/2" | BRONZE | 1.6% | 1/4" |
| LF252 | 2 1/2" | 316 S.S. | 1.6% | 1/4" |
| LF441 | 4" | BRONZE | 1% | 1/4" |
| LF401 | 4" | BRONZE | 1% | 1/4" or 1/2" |
| LF402 | 4" | 316 S.S. | 1% | 1/4" or 1/2" |
| LF602 | 6" | 316 S.S. | 1% | 1/4" or 1/2" |

Above selections are for direct stem mounting. For panel mounting versions add suffix U (U-clamp) or F (Front Flange) to the above Catalog No.

DRY CONSTRUCTION

| CAT. NO. | DIAL SIZE | INTERNALS | ACCURACY | NPT |
|----------|-----------|-----------|----------|--------------|
| NF252 | 2 1/2" | 316 S.S. | 2% | 1/4" |
| NF401 | 4" | BRONZE | 1% | 1/4" |
| NF402 | 4" | 316 S.S. | 1% | 1/4" or 1/2" |
| NF601 | 6" | BRONZE | 1 1/2% | 1/4" |
| NF602 | 6" | 316 S.S. | 1 1/2% | 1/4" or 1/2" |

RANGES FOR LF25 & NF25

| PRESSURE | | |
|----------|-------------|---------------|
| RANGE | GRADUATIONS | FIG. INTERVAL |
| 0-15 | 0.5 | 3 |
| 0-30 | 0.5 | 5 |
| 0-60 | 0.5 | 5 |
| 0-100 | 1 | 10 |
| 0-160 | 2 | 20 |
| 0-200 | 2 | 20 |
| 0-300 | 2.5 | 30 |
| 0-400 | 4 | 40 |
| 0-600 | 10 | 100 |
| 0-1000 | 10 | 100 |
| 0-1500 | 20 | 300 |
| 0-2000 | 25 | 300 |
| 0-3000 | 100 | 500 |
| 0-5000 | 100 | 1000 |
| COMPOUND | | |
| RANGE | GRADUATIONS | FIG. INTERVAL |
| 30-0-30 | 2" Hg.-1p | 10" Hg.-5p |
| 30-0-60 | 2" Hg.-2p | 10" Hg.-10p |
| 30-0-100 | 5" Hg.-2p | 30" Hg.-20p |
| 30-0-150 | 5" Hg.-5p | 30" Hg.-25p |
| 30-0-200 | 5" Hg.-5p | 30" Hg.-20p |
| 30-0-300 | 10" Hg.-5p | 30" Hg.-50p |
| VACUUM | | |
| RANGE | GRADUATIONS | FIG. INTERVAL |
| 0-30" | 1" In. Hg. | 5" In. Hg. |

RANGES FOR LF40, NF40 & NF60

| PRESSURE | | |
|----------|--------------|---------------|
| RANGE | GRADUATIONS | FIG. INTERVAL |
| 0-15 | 0.5 | 3 |
| 0-30 | 0.5 | 5 |
| 0-60 | 0.5 | 5 |
| 0-100 | 1 | 10 |
| 0-160 | 2 | 20 |
| 0-200 | 2 | 20 |
| 0-300 | 2.5 | 30 |
| 0-400 | 4 | 40 |
| 0-600 | 10 | 100 |
| 0-1000 | 10 | 100 |
| 0-1500 | 20 | 300 |
| 0-3000 | 25 | 300 |
| 0-5000 | 50 | 500 |
| 0-10000 | 100 | 1000 |
| 0-15000 | 200 | 2000 |
| 0-20000 | 200 | 2000 |
| COMPOUND | | |
| RANGE | GRADUATIONS | FIG. INTERVAL |
| 30-0-30 | 2" Hg.-1p | 10" Hg.-5p |
| 30-0-60 | 2" Hg.-2p | 10" Hg.-10p |
| 30-0-100 | 2" Hg.-2p | 10" Hg.-20p |
| 30-0-150 | 5" Hg.-5p | 10" Hg.-10p |
| 30-0-200 | 10" Hg.-5p | 30" Hg.-20p |
| VACUUM | | |
| RANGE | GRADUATIONS | FIG. INTERVAL |
| 0-30" | 0.5" In. Hg. | 5" In. Hg. |

LOW PRESSURE DIAPHRAGM GAUGES

Designed for pressures below 15 psi, the Weiss Diaphragm Gauge offers an instrument highly sensitive yet durably constructed. Furnished in black drawn steel cases. Available in 2 1/2" dial size and 1 1/4" NPT lower or center back connected.

SOCKET: Brass

MOVEMENT: Brass

DIAPHRAGM: Copper alloy.

DIAL: White coated aluminum, lithographed with black graduation lines and numerals.



| TO SPECIFY | | | | | | |
|----------------------------|--------------|--|------------|------|--------------|--------|
| SERIES | SIZE | RANGE TYPE | CASE STYLE | NPT | MOUNT | RANGE |
| DG | 2 1/2" 25 | P3-Pressure V3-Vacuum C3-Combination | U-U Clamp | 1/4" | LM* CBM** | — — |
| Ex: DG25P3 1/4" LM 0-10psi | | | | | | |

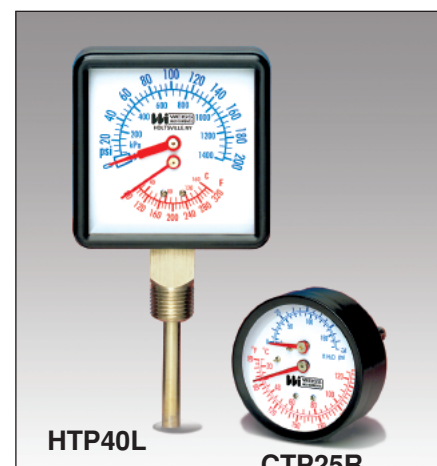
*LM - Lower Mount **CBM - Center Back Mount

| PRESSURE | | | COMBINATION | | INNER SCALE | | OUTER SCALE | |
|-------------|-------------|---------------|--------------------------|--------------------------|-------------|--------------------|---------------|--------------------|
| RANGE | GRADUATIONS | FIG. INTERVAL | IN. WATER OUTER SCALE | OZ. WATER INNER SCALE | GRADS | FIGURE INTERVAL | GRADS | FIGURE INTERVAL |
| 0-3 psi | 0.05 | 0.5 | 0-35 | 0-20 | 0.5 | 5.0 | 0.5 | 5.0 |
| 0-5 psi | 0.1 | 1.0 | 0-15 | 0-9 | 0.2 | 1.0 | 0.2 | 3.0 |
| 0-10 psi | 0.1 | 1.0 | 0-60 | 0-35 | 1.0 | 5.0 | 1.0 | 10.0 |
| inch/water | | | | | | | | |
| 0-15 | 0.2 | 3.0 | | | | | | |
| 0-30 | 0.5 | 5.0 | | | | | | |
| 0-60 | 1.0 | 10.0 | | | | | | |
| 0-100 | 1.0 | 10.0 | | | | | | |
| oz.-sq. in. | | | VACUUM - in water vac. | | | | | |
| 0-10 | 0.1 | 1.0 | RANGE | GRADUATIONS | | | FIG. INTERVAL | |
| 0-15 | 0.2 | 3.0 | 30-0 | 0.5 | | | 5.0 | |
| 0-30 | 1.0 | 5.0 | 60-0 | 1.0 | | | 10.0 | |
| 0-100 | 1.0 | 10.0 | 100-0 | 1.0 | | | 10.0 | |

TRI-O-METERS

The Weiss Tri-o-meter is designed for use on all types of hot water heating systems. One instrument reads the water pressure, water temperature and system head in feet of H₂O. Available in 2 1/2" dial with 1/4" NPT rear connection and 3 1/2" dial with 1/2" NPT lower or rear connected.

| Series C | 0-75 psi & Ft. of H ₂ O | 60-260 F&C |
|-----------------|------------------------------------|------------|
| | H 0-200 psi & kPa | 80-320 F&C |
| CAT. NO. | DESCRIPTION | |
| CTP25R | 1/4" NPT Rear | |
| CTP25RX | 1/4" NPT rear x 2" Extension | |
| CTP40RSX | 1/2" NPT Rear | |
| CTP40L | 1/2" NPT Lower | |
| HTP40RSX | 1/2" NPT rear | |
| HTP40L | 1/2" NPT lower | |



DIAPHRAGM SEALS



The Weiss line of Diaphragm Seals, in conjunction with Weiss pressure indicators, offers instrumentation that's rugged and carefully calibrated to withstand the most severe industrial, process or OEM service. Our diaphragm seals are available in a variety of metal housing materials and process connection sizes to fit most requirements.

Series DS/DV/DT

Max. Pressure/Temperature Limits: Vacuum thru 2300 psi to 100°F, 1500psi to 200°F, 600 psi to 400°F.

Top Housing: 1/4" or 1/2" NPT (304 S.S. standard)

Diaphragm: 316 L.S.S. welded, Viton* or Teflon**

Nuts and Bolts: Stainless Steel

Lower Housing: 1/4" thru 1" NPT

* Viton is furnished for Vacuum, 30 psi and Compound 30-0-15psi ranges.
** Teflon is available for ranges to 200 psi.

Ranges 0-30" HG, 30-0-15 psi, 30-0-30 psi. Silicone Filling only.

Ordering Code: -DS - **DS=316SS** **Ex: 25-DS12-50**
A -DV **B C D** **DV=Viton**
-DT **DT=Teflon**

A. Top Connection

25 = 1/4" NPT
50 = 1/2" NPT

B. Flushing/No Flushing

0 = No flushing conn.
1 = Flushing conn.

C. Lower Housing Mat'l

2 = 316SS

D. Process Conn.

25 = 1/4" NPT
50 = 1/2" NPT
75 = 3/4" NPT
10 = 1" NPT

LIQUID FILLINGS: Food-Grade Glycerine • Silicone DC200

The Series MD/MN is a compact, lightweight, economical diaphragm seal. The upper and lower housing, as well as the diaphragm, are type 316 stainless steel - all welded together making a one piece integral unit, ideally suited for those applications where space is a factor.

The use of a hermetically sealed, liquid filled pressure gauge in conjunction with either a MD or MN seal protects the indicating gauge from both the process medium and atmospheric conditions, as well as reduces pointer fluctuations due to vibration and pulsation.

Series MD

Opr. Pressure: 30 psi thru 1000 psi

Temperature Limits: -5 to 300°F

Top Connection: 1/4" or 1/2" NPT

Process Connection: 1/4", 1/2" or 3/4" NPT

Ordering Code: -MDN2-
A **B**
Ex: 25-MDN2-50

A. Top Connection

25 = 1/4" NP
50 = 1/2" NPT

B. Process Conn.

25 = 1/4" NPT
50 = 1/2" NPT

Series MN

Opr. Pressure: 100 psi thru 1000 psi

Temperature Limits: -5 to 300°F

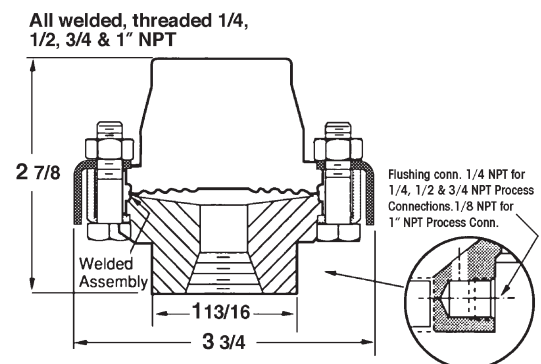
Top Connection: 1/4" NPT

Process Connection: 1/4" or 1/2" NPT

Ordering Code: 25-MNN2-
X
Ex: 25-MNN2-25

X. Process Connection

25 = 1/4" NPT
50 = 1/2" NPT



GAUGE ACCESSORIES



TABLE 1 - PRESSURE SNUBBERS

| STYLE CODE | HOUSING MATERIAL CODE | HOUSING MATERIAL | NPT CODE | NPT | PSI RATING AT 70°F |
|------------|-----------------------|------------------|----------|------|--------------------|
| PSN | B | Brass | 25 | 1/4" | 1,500 psi |
| | S | 303 S.S. | 50 | 1/2" | 1,500 psi |

TABLE 2

| POROSITY SYMBOL CODE | TYPE OF SERVICE | PORE OPENING MEAN | PORE OPENING MAX. |
|----------------------|--------------------------------------|-------------------|-------------------|
| E | Water and Light Oil (30 to 225 SSU*) | .0013 | .0025 |
| D | Oil (225 to 500 SSU) | .0025 | .005 |
| G | Air and other Gases | .0004 | .0009 |

*SSU - Saybolt Seconds Universal Viscosity

For complete Catalog No. use Coding from Table 1 & 2. **EX: PSN-B-25-E** = Brass Housing 1/4" NPT, E Porosity Disc.

NEEDLE VALVE

| CAT. NO. | SIZE | MATERIAL | RATING |
|----------|-----------------------|----------|-----------------|
| 25NVBR | 1/4" FNPT X 1/4" FNPT | Brass | 600 psi & 300°F |

SYPHONS

| CAT. NO. | SIZE | MATERIAL | RATING |
|----------|-----------------------|----------|-----------------|
| SY-14S | 1/4" MNPT x 1/4" MNPT | Iron | 500 psi & 400°F |
| SY-14B | 1/4" MNPT x 1/4" MNPT | Brass | 250 psi & 400°F |

GAUGE COCKS

| CAT. NO. | SIZE | MATERIAL | RATING |
|----------|-----------------------|----------|---------------|
| TC-14 | 1/4" FNPT x 1/4" FNPT | Brass | 150 lb. Steam |
| MTC-14 | 1/4" FNPT x 1/4" MNPT | Brass | 150 lb. Steam |
| LC-14 | 1/4" FNPT x 1/4" FNPT | Brass | 150 lb. Steam |

BALL VALVES

| CAT. NO. | SIZE | MATERIAL | RATING |
|----------|-----------------------|---------------------|-----------------|
| BV25 | 1/4" FNPT x 1/4" FNPT | Nickel Plated Brass | 450 psi & 250°F |
| MBV25 | 1/4" FNPT x 1/4" MNPT | Nickel Plated Brass | 450 psi & 250°F |
| BV50 | 1/2" FNPT x 1/2" FNPT | Nickel Plated Brass | 450 psi & 250°F |

HAND HELD DIGITAL THERMOMETER

ENVIRONMENTAL

Ambient Operating Range: 0 to 50°C 32 to 122°F

Storage Temperature: -10 to 60°C -14 to 140°F

Humidity: 0% to 90% (0 to 35°C) 0% to 70% (35 to 50°C)

ACCURACY

| Function | Range | Accuracy + (% of reading+degrees) |
|----------|-----------------|-----------------------------------|
| °C | -50°C to 1000°C | 0.3% ± 1°C |
| °F | -50°F to 1999°F | 0.3% ± 2°F |

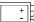
GENERAL

Weight: 206 GM (7.2oz)

Dimension: 5.31"L x 2.83"W x 1.22"H (135x72x31mm)

Battery: Standard 9V battery (NEDA 1604,6F22 or 006P)

Battery life: Approx.150 hours.

Low battery indication: The  (BT) is displayed when the battery voltage drops below the operating voltage.

Over range indication: OL

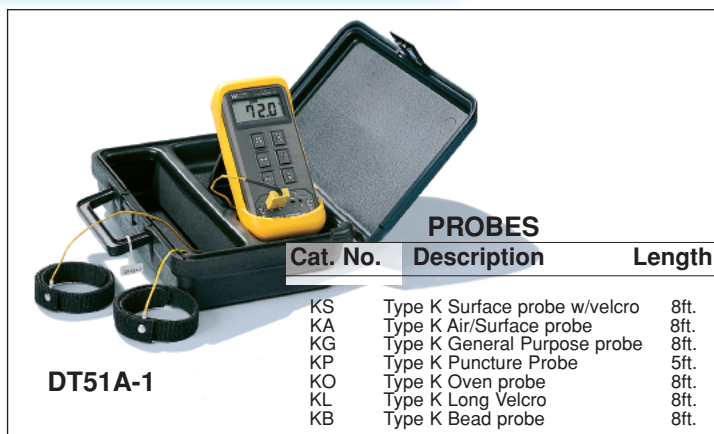
Measurement rate: 2.5 measurements per second.

Display: (3) 1/2" liquid crystal digit display, 14mm high LCD.

Yellow Grip Sleeve: Included.

Data Hold Feature - Max Hold Feature

Output Jack: For temperature recording or computer interface.



DT51A-1

PROBES

| Cat. No. | Description | Length |
|----------|-------------------------------|--------|
| KS | Type K Surface probe w/velcro | 8ft. |
| KA | Type K Air/Surface probe | 8ft. |
| KG | Type K General Purpose probe | 8ft. |
| KP | Type K Puncture Probe | 5ft. |
| KO | Type K Oven probe | 8ft. |
| KL | Type K Long Velcro | 8ft. |
| KB | Type K Bead probe | 8ft. |

The DT51A-1 is a type K thermocouple based single probe thermometer with a range of -50/1999°F, resolution switch (0.1°F or 1°F), Data Hold and Max Memory feature, °F or °C switch and includes a