

# Track-It™

## RH/Temp Data Loggers

### Description

The Track-It™ RH/Temp Data Logger is a battery powered stand alone compact data logger that records up to 32,000 samples each of Relative Humidity and Temperature data. The unit is easily configured using the included Track-It™ Software. Simply plug the logger into an open USB port on your PC and the software automatically identifies the logger. Configure the unit to start and stop recording at a predetermined time and date or only when an alarm condition is sensed. The sample storage rate can be set from 1 sample every 2 seconds up to 1 sample every 24 hours. The on board data storage is non-volatile so data will not be lost in the event of a depleted battery. The Track-It™ RH/Temp Logger can be ordered



with or without an LCD display. Information displayed on the LCD is also user programmable and can be sequenced by pressing the logger button. Both models have a multicolored LED indicator to notify user of alarms or general activity. A splash proof protective cover protects the logger when in use.

### Features

- Push button or use PC to start recording
- Up to 64,000 samples per record
- Alarm set points
- Small compact size
- Integral USB interface (no custom cable!)
- Interactive software (included!)
- One year battery life (battery included!)
- Optional three year battery life
- Temperature range -4 to 185°F/85°C
- Wide RH range 0-100%
- High accuracy and repeatability
- Accurate internal clock (1 minute/year)
- Dew point calculation standard
- Multiple user programmable displays
- N.I.S.T. calibration available
- MKT calculation included
- Dew Point calculation included

### Typical Uses

- Shipping
- Warehouse
- Food
- Museums
- Buildings
- Laboratories
- Libraries
- HVAC
- Refrigeration
- Pharmaceutical
- Agriculture
- Computer Rooms
- Communications Equipment



# Track-It™ RH/Temp Data Loggers



## Specifications

### General

<b>Record:</b>	<b>Sample Rates:</b> User configured 1 every 2 seconds up to 1 every 24 hours <b>No. of Samples:</b> 32,000 or 64,000 (depends on setup)
<b>Record Trigger:</b>	Two independent triggers. Multiple trigger modes: Instantaneous, button control, on alarm, time and date (start and stop), day of week
<b>Record Mode:</b>	Fill to end of memory, cyclic, number of samples, time duration
<b>Display:</b>	4 digit LCD (Non display versions available with LED only) User programmable: Indication of data value, eng units, alarms, record mode, battery condition, time/date, memory
<b>LED:</b>	User programmable: Indication of alarms, recording, triggered
<b>Button:</b>	User programmable: View display, record on/off, reset alarms, reset timer
<b>Alarms:</b>	2 user programmable alarms. High or Low
<b>Communication:</b>	Direct USB connection
<b>Software:</b>	Track-It™ Software—Program device, view data (historic or real time), export to Excel™. Simple and advanced modes
<b>Battery:</b>	<b>Coin Cell Option:</b> Battery: Lithium CR2032 Life: 1 year @ 1 minute sample rate <b>Hi Energy Option:</b> Battery: EF651625 Life: 3 years @ 1 minute sample rate
<b>Dimensions:</b>	3.66" (9.29cm)L x 0.75" (1.91cm)H x 1.16" (2.95cm)W

### Measurement

<b>Humidity Range:</b>	0-100% RH
<b>Accuracy:</b>	Typical $\pm 3\%$ (20 to 80% RH) Max $\pm 5\%$ (0 to 100% RH)
<b>Resolution:</b>	0.1% RH
<b>Repeatability:</b>	0.1% RH
<b>Temperature Range:</b>	-20 to +85°C / -4 to 185°F w/EF65162 battery -20 to +70°C / -4 to 158°F w/CR2032 battery
<b>Accuracy:</b>	$\pm 1^\circ\text{C}$ 0 to 50°C / 32 to 122°F $\pm 2^\circ\text{C}$ -20 to 85°C / -4 to 185°F
<b>Resolution:</b>	0.1°C / 0.1°F
<b>Repeatability:</b>	$\pm 0.1^\circ\text{C}$ / $\pm 0.2^\circ\text{F}$
<b>Clock Accuracy:</b>	$\pm 1$ minute/year

### Ordering Information

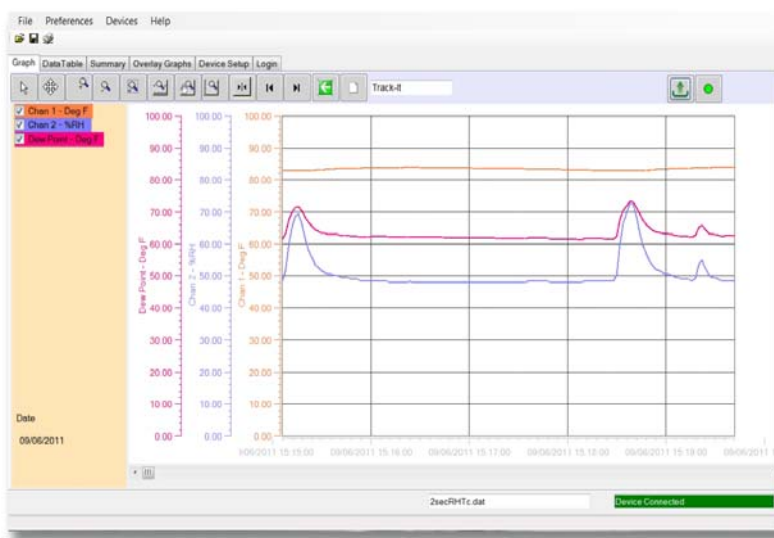
Model	Description	Part No.
RHTemp Track-It	Logger w/display, standard battery	5396-0201
RHTemp Track-It LB	Logger w/display, long life battery	5396-0202
RHTemp Track-It B	Logger, no display, standard battery	5396-0203
RHTemp Track-It BLB	Logger, no display, long life battery	5396-0204
NIST RHTemp	NIST calibration certificate	5396-02-CAL

## Track-It™ Software

Track-It™ Software is a powerful Windows based software package that is included with every Track-It™ Data Logger. It allows for easy setup, retrieval, interpretation and export of the recorded data. Simply connect your Track-It™ data logger to an open USB port and begin communicating immediately.

Point and click to select your sample interval, alarm set points, engineering units, start recording triggers and LCD Displays.

Advanced analysis such as **MKT** and **Dew Point** calculations are standard. View a numerical data table or graphical representation of data readings relative to time. Use the graph tools such as zoom, cursor, min and max to examine and analyze the record. Track-It™ Software turns your PC into a real time data acquisition system by allowing you to stream graphical or tabular data directly to your PC. Export stored data into an Excel spreadsheet.



Calculate and Trend Dew Point