

3169-20, 3169-21 CLAMP ON POWER HiTESTER

Power Measuring Instruments



- Measure up to two 3-phase, 3-wire systems (displays voltage and current for three lines)
Measure up to four single-phase, 2-wire systems
- 0.5 A to 5000 A range



- Compact and light weight
- PC card data storage
- Power recording for individual waveforms
- Simultaneous recording of demand values and harmonics
- 9625 POWER MEASUREMENT SUPPORT SOFTWARE



The photo shows the 3169-21 combined with the 9661 and 9669 CLAMP ON SENSORS (optional) for measuring two systems.

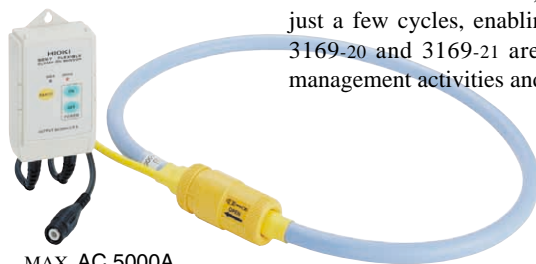
The 3169-20/21 can also be used in combination with CLAMP ON SENSORS (optional) rated up to 5000 A.

Offering a new approach to energy-related measurement

such as energy conservation, ISO14001 testing, equipment diagnosis, and harmonics measurement.

Measures power lines of up to 254 mm in diameter

9667 FLEXIBLE CLAMP ON SENSOR



MAX. AC 5000A

The 3169-20 and 3169-21 are CLAMP ON POWER HiTESTERS that allow measurement of single-phase to three-phase 4-wire circuits with a single unit. In addition to measuring standard parameters such as voltage, current, power, power factor, and integrated values, these clamp-on power meters can simultaneously perform demand measurements required for carrying out power management and energy-saving measures, as well as harmonic measurements. The two new power meters also feature PC card data storage, and come equipped with an RS-232C interface for PC communications. Further, with greater data processing speeds, it is possible to measure the power of just a few cycles, enabling more detailed and effective energy-saving measures for equipment. The 3169-20 and 3169-21 are ideal for users who want to achieve close control over energy-saving management activities and measures.

Offering a new measurement method for energy saving activities

All in a compact A5-size unit



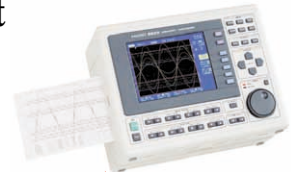
Example of use in combination with four **9661 CLAMP ON SENSOR** (optional)

Simultaneous measurement of two 3-phase, 3-wire systems.
Select the clamp-on sensor type most suited to your measurement needs for each individual circuit.



9661 CLAMP ON SENSOR (500 A AC)
9669 CLAMP ON SENSOR (1000 A AC)
(optional)

3169-21 CLAMP ON POWER HiTESTER
(Shown with D/A output)



Simultaneous recording of a variety of signal and energy-saving data.

Allows high-speed data transfer to a PC card for each waveform at intervals of 0.1, 0.2, or 0.5 second.



9438-03 VOLTAGE CORD (4 provided)

Features

■ Measure power lines of up to four systems (with a common voltage)

One single unit can measure four circuits (single-phase 2-wire), two circuits (3-phase, 3-wire), or a one circuit (3-phase, 4-wire) system.

■ A wide range of measurement functions

The 3169-20/21 can simultaneously measure voltage, current, power (active, reactive, and apparent), integrated power, power factor, and frequency. Further, when using 3-phase, 3-wire (3P3W2M) mode, you can display the voltage and current for all three lines by measuring just two of them. When using the 3-phase, 4-wire (3P4W4I) mode, neutral line current can be displayed using 4 current measurement.

■ Equipped with ranges from 0.5 A to 5000 A

The power meters support seven types of clamp-on current sensors to enable measurement for a variety of items, from CT terminals to large current and thick power lines.

■ Supports high-speed data storage from individual waveforms

When using the standard mode to perform integrated power measurement, you can store data in intervals starting from one second, and when simultaneously measuring integration and harmonics, in intervals starting from one minute. When in the fast mode, you can store RMS data for individual waveforms.

■ PC Card compatible plus internal hard drive for extra memory

Store valuable measurement data in convenient PC cards. The internal memory (1 MB) supports measurement over extended periods and detailed measurement parameters.

■ Housed in a compact A5 body size

The 3169-20 and 3169-21 feature a compact design that makes them portable and easy to use in tight spaces, and are approximately 30% more compact than the 3166 CLAMP ON POWER HiTESTER.

■ Multi-language Compatibility

Select from nine languages, including Japanese and English.

■ Detect incorrect connection using vector diagrams

Use the vector display on the connection confirmation screen to check the phase, whether a connection is loose, or whether the clamp-on sensor connection has been reversed during VT/CT terminal measurement.

■ Polarity display and measurement using the reactive power measurement method

The units come equipped with a polarity display for checking LAG/LEAD when measuring power factor or reactive power. Further, you can select the reactive power measurement method, or display the phase factors for RMS values and power comparison.

■ High-speed D/A output

The 3169-21 comes equipped with 4-channel high-speed D/A output to enable analog output of RMS values for individual waveforms.

■ Ideal for power and harmonics management

The power meters come equipped with a harmonics measurement function that supports measurement of 3-phase power lines. They can also perform simultaneous measurement of harmonics and demand values, enabling both power and harmonics management.

The ultimate in clamp-on power meters!

Sleek Design and Engineering

The photo shows the 3169-21 with D/A output.

Voltage (9438-03 VOLTAGE CORD)
input terminal

Current (CLAMP ON SENSOR)
input terminal

D/A output terminal pin placement

Use the 9441 CONNECTION CABLE to connect to external devices. (Output resistance: 100 Ω)

Pin	Signal name
1	D/A output ch1
2	D/A output ch2
3	D/A output ch3
4	D/A output ch4
5 to 8	GND

Contrast adjust volume

Key lock switch

Power inlet

Power switch

D/A output terminal

External I/O terminal

RS-232C port

PC card slot

External I/O terminal pin placement

Pin	Signal name	Pin	Signal name
1	Start/stop input	4	Data storage input
2	Free	5	GND
3	Status output		

Use the 9440 CONNECTION CABLE to connect to external devices.

Range Configuration Table

<div><div></div><div></div><div></div></div>		9695-02 CLAMP ON SENSOR (CAT III 300V) (500mA, 1A, 5A, 10A, 50A)		9661 CLAMP ON SENSOR (5A, 10A, 50A, 100A, 500A)					
		Voltage	Connection	9694 CLAMP ON SENSOR (CAT III 300V) (500mA, 1A, 5A)			9660, 9695-03 CLAMP ON SENSOR (CAT III 300V) (5A, 10A, 50A, 100A)		
				500.00mA	1.0000A	5.0000A	10.000A	50.000A	100.00A
150.00V	Single-phase 2-wire	75.000 W	150.00 W	750.00 W	1.5000kW	7.5000kW	15.000kW	75.000kW	
	Single-phase 3-wire	150.00 W	300.00 W	1.5000kW	3.0000kW	15.000kW	30.000kW	150.00kW	
	Three-phase 3-wire								
	Three-phase 4-wire	225.00 W	450.00 W	2.2500kW	4.5000kW	22.500kW	45.000kW	225.00kW	
300.00V	Single-phase 2-wire	150.00 W	300.00 W	1.5000kW	3.0000kW	15.000kW	30.000kW	150.00kW	
	Single-phase 3-wire	300.00 W	600.00 W	3.0000kW	6.0000kW	30.000kW	60.000kW	300.00kW	
	Three-phase 3-wire								
	Three-phase 4-wire	450.00 W	900.00 W	4.5000kW	9.0000kW	45.000kW	90.000kW	450.00kW	
600.00V	Single-phase 2-wire	300.00 W	600.00 W	3.0000kW	6.0000kW	30.000kW	60.000kW	300.00kW	
	Single-phase 3-wire	600.00 W	1.2000kW	6.0000kW	12.000kW	60.000kW	120.00kW	600.00kW	
	Three-phase 3-wire								
	Three-phase 4-wire	900.00 W	1.8000kW	9.0000kW	18.000kW	90.000kW	180.00kW	900.00kW	

Voltage	Connection	9669 CLAMP ON SENSOR		
		100.00 A	200.00 A	1.0000kA
150.00V	Single-phase 2-wire	15.000kW	30.000kW	150.00kW
	Single-phase 3-wire	30.000kW	60.000kW	300.00kW
	Three-phase 3-wire	45.000kW	90.000kW	450.00kW
	Three-phase 4-wire	30.000kW	60.000kW	300.00kW
300.00V	Single-phase 2-wire	60.000kW	120.00kW	600.00kW
	Single-phase 3-wire	90.000kW	180.00kW	900.00kW
	Three-phase 3-wire			
	Three-phase 4-wire			
600.00V	Single-phase 2-wire	120.00kW	240.00kW	1.2000MW
	Single-phase 3-wire			

Voltage	Connection	9667 FLEXIBLE CLAMP ON SENSOR	
		500.00 A	5.0000kA
150.00V	Single-phase 2-wire	75.000kW	750.00kW
	Single-phase 3-wire	150.00kW	1.5000MW
	Three-phase 3-wire	225.00kW	2.2500MW
	Three-phase 4-wire	150.00kW	1.5000MW
300.00V	Single-phase 2-wire	300.00kW	3.0000MW
	Single-phase 3-wire	450.00kW	4.5000MW
	Three-phase 3-wire		
	Three-phase 4-wire		
600.00V	Single-phase 2-wire	600.00kW	6.0000MW
	Single-phase 3-wire		

Find Quality Products Online at:

www.GlobalTestSupply.com

sales@GlobalTestSupply.com

Note 1: The range configuration table displays the full scale display values for each measurement range. Note 2: The "max" and "min" have been replaced with "100% of full" and "0% of full" for the apparent power and reactive power measurement ranges. Note 3: Voltage and current input values 0.4% or less than the measurement range are displayed as "zero". When either the voltage or current for the power line is zero, the power value is displayed as zero. Note 4: You can display measurement values up to 130% of each measurement range.

Measure hidden power waste through secure connections, simple measurement methods, and detailed data capture.

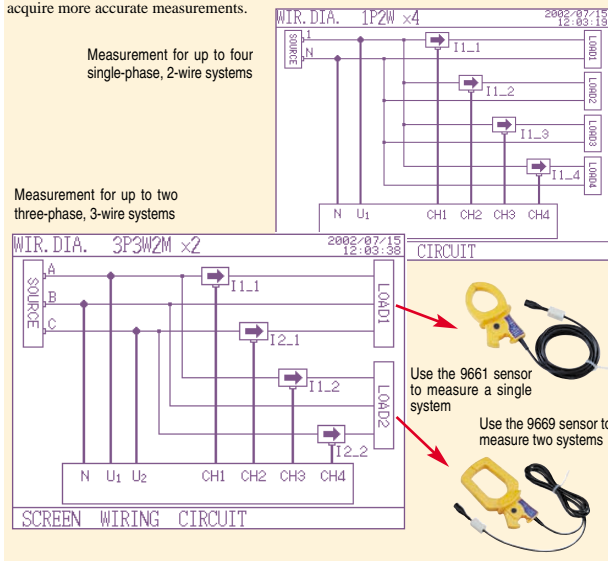
Promises reliable measurement for power demand requirements!

Select from a variety of data, including detailed and harmonics data for multiple circuits

★ To measure multiple systems simultaneously

A single unit can measure two three-phase, 3-wire systems. Further, you can make individual clamp-on sensor and current range settings for each system.

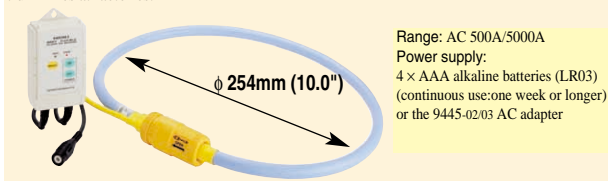
Also, in addition to performing simultaneous measurement for up to four systems (single-phase, 2-wire) with a common voltage, you can set the current range individually for each system. Setting the most suitable current range for both large and small loads allows you to acquire more accurate measurements.



★ Having trouble clamping onto thick power lines?

Using the 9667 FLEXIBLE CLAMP ON SENSOR, you can measure power lines that are up to 5000 A AC and up to 245 mm in diameter.

The 9667 FLEXIBLE CLAMP ON SENSOR ability to measure power lines with good phase characteristics carrying up to 5000 A AC and measuring up to 254 mm in diameter allows you to measure the power for large current lines that were previously difficult to measure, such as trunk lines at factories.

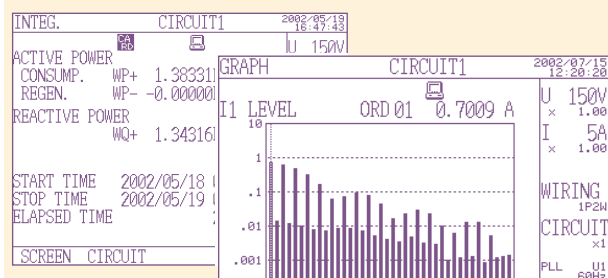


★ Simultaneous power and harmonics management

Use a single unit to simultaneously measure data for power and harmonics.

All acquired data can be saved onto a PC card.

Power data (including demand data) and harmonics data can be simultaneously saved onto a PC card or in the unit's internal memory. Further, data for all of the systems being measured can be saved when measuring multiple circuits. Each of these two new unit's offers a management system for power and harmonic quality.



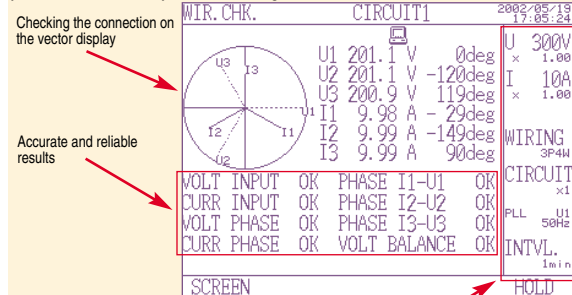
★ When measurement accuracy is crucial

The addition of a vector display for viewing the connection status completes the preparation required for measurement.

Have you ever experienced incorrect measurement results?

The most common cause of incorrect data is a faulty connection. With the 3169-20/21 you can use the vector display to check the phase, whether a connection is loose, or whether the clamp-on sensor connection has been reversed.

Also, you are assured of proper connection when measuring the VT (PT)/CT terminals even if you cannot see the line you are measuring.



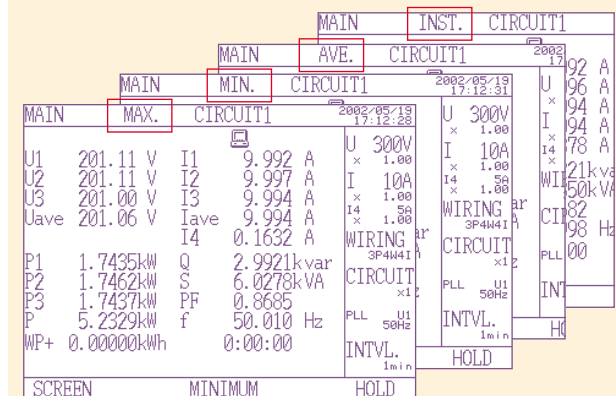
The basic settings are constantly displayed, allowing you to measure with confidence.

During measurement, in addition to displaying the voltage and current ranges, and VT (PT) and CT ratios for each system, the unit can also display items such as the measurement interval. Because the basic settings are constantly visible, you can be confident of obtaining the correct measurement results.

★ Capture facility data quickly

By using continuous processing to measure individual waveforms, you can accurately measure data in a relatively short amount of time.

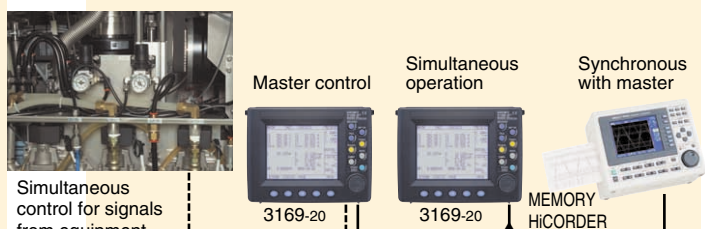
Use the desired measurement method to continuously measure the voltage, current, and power for individual waveforms, enabling you to obtain accurate data in one second or less. Further, you can record the maximum, minimum and average values.



★ Measure another device simultaneously

Using the external I/O function, you can obtain even more detailed measurements for energy conservation.

In addition to measurement start/stop control through external input, you can use this function to output the measurement start/stop signal for the 3169-20/21. Simultaneous recording of a variety of signals is also possible for equipment when using multiple devices to perform start control and multi-channel recording.



Large storage capacity to accommodate power and harmonics data for individual waveforms. Supports energy saving measures that can be carried out from your PC.

Greater flexibility for energy saving measures through detailed measurement!

Reduce energy consumption by "1%"! Why not try analyzing your energy saving measures?

★ Save measurement details to PC card for extended measurements!

Why not try a shorter data management interval?

With the 3169-20/21, you can set the data recording interval to 1 minute. If you are unsure how to proceed with energy conservation, you can use a large capacity PC card to save measurement details, then use the data to create a load fluctuation graph and analyze this to help reduce wasted power consumption.

Further, because you can save a variety of data, including simultaneous recording of power and harmonics data, waveform data storage, and print-outs of the screen, these two new units help by storing measurement details.

Measurement conditions: 1-minute recording interval, when using a PC card (128 MB)

Data storage	1P2W × 4	1P3W × 2	3P3W2M × 2	3P3W3M, 3P4W
Normal measurement (only saves average, integrated, and demand values)	85 days	106 days	100 days	171 days
Normal measurement (saves all items)	45 days	41 days	37 days	62 days
Normal measurement + harmonics measurement (saves all items)	37 hours	40 hours	30 hours	46 hours

Interval	1P2W × 4	1P3W × 2	3P3W2M × 2	3P3W3M, 3P4W
1 minute	45 days (37 hours)	41 days (40 hours)	37 days (30 hours)	62 days (46 hours)
2 minutes	91 days (74 hours)	82 days (81 hours)	75 days (60 hours)	125 days (93 hours)
5 minutes	229 days (186 days)	205 days (203 hours)	188 days (152 hours)	313 days (233 hours)
10 minutes	365 days (15 days)	365 days (16 days)	365 days (12 days)	365 days (19 days)
15 minutes	365 days (23 days)	365 days (25 days)	365 days (19 days)	365 days (29 days)
30 minutes	365 days (46 days)	365 days (50 days)	365 days (38 days)	365 days (58 days)

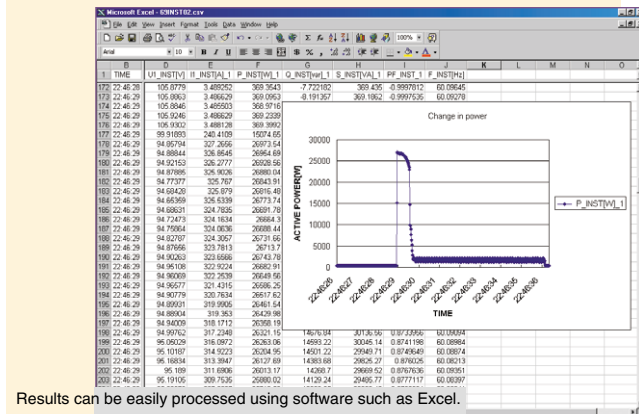
Measurement conditions: When saving all items using normal measurement, the number of days in parentheses indicate normal measurement + harmonics measurement, maximum measurement period of one year

★ Identify even small amounts of power waste using individual waveform measurements

The 3169-20/21 can help turn you into a keen energy saving specialist.

These two new units allow you to measure power data by recording the RMS values for individual waveforms.

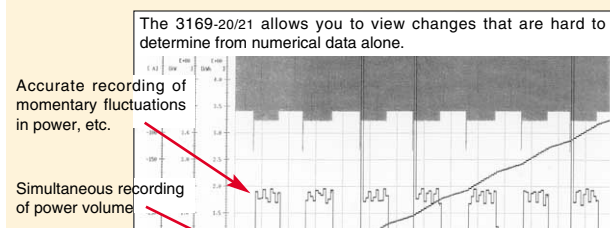
By measuring just a few seconds of machine cycles or changes in operating patterns of facilities such as manufacturing equipment, you can grasp power fluctuations over a relatively short amount of time and view improvements in the form of numerical data. Gain unsurpassed energy savings by achieving simple improvements around the work environment.



★ Improve energy-saving operations and create an energy-efficient facility

Why not try to improve your energy-saving measures using the 3169-21?

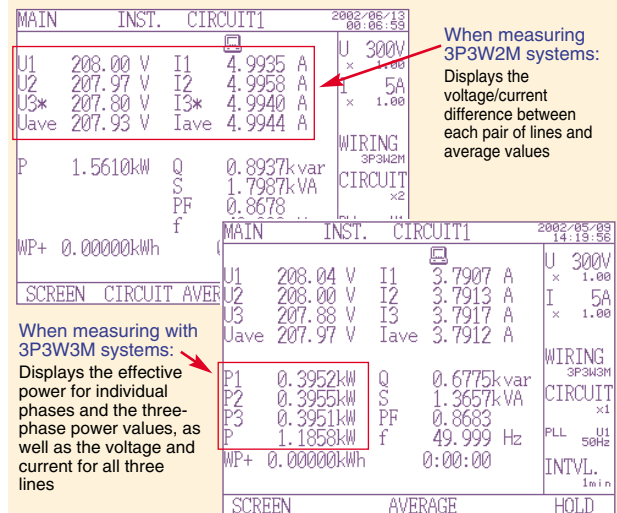
Using the D/A output (4 ch) function on the 3169-21, you can simultaneously record a variety of measurement and control signals for equipment, such as the power fluctuation and temperature/flow for individual waveforms, onto a HIOKI MEMORY HiCORDER or logger. A slight reduction in power consumption due to changes in the inverter motor operating patterns or temperature settings equals to an energy-saving effect.



★ Unbalanced loads are an enemy to energy saving activities. Solve your problems with careful management of power lines.

Unbalanced 3-phase loads can result in a damaged power line.

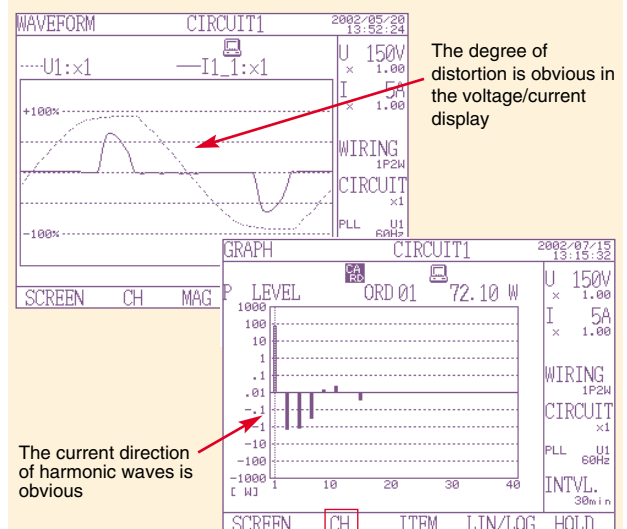
To provide detailed management of measurements, the 3169-20/21 displays voltage and current for all three lines even when measuring just two circuits (3P3W2M). Further, because the effective power for each phase is displayed based on a virtual center point when measuring the voltage and current for all three lines (3P3W3M), the units can also be used to implement energy saving measures and power management systems.



★ Harmonics cause wasted power

Did you think that harmonics and energy saving activities were unrelated?

Due to a spread in equipment that uses semiconductor control devices, such as inverters, power quality has decreased. Also, power consumed in harmonic components is all wasted power. Harmonic control and management are essential for energy conservation.



★ To identify causal factors with harmonic measurements of multiple systems circuits

If production equipment malfunctions, power is wasted if repeated manufacture results in defective products again.

If you think harmonics are causing malfunctions, you can simultaneously measure the harmonics of individual circuits using multi-circuit measurement to obtain detailed information about the occurrence of harmonics along with the current direction for each phase. Using the 3169-20/21 you can accurately determine the relationship for harmonic inflow and

9625 POWER MEASUREMENT SUPPORT SOFTWARE

■ Graphically process measurement data from Model 3169-20/21 easily on a PC!

The Model 9625 POWER MEASUREMENT SUPPORT SOFTWARE application provides easy graphical processing on a computer of measurement data saved on the Models 3169-20/21 and 3166 CLAMP ON POWER HiTESTERS.

3169-20/21

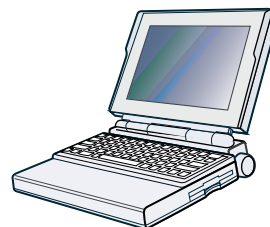


3166



Power Data & Harmonic Data

Power Data & Harmonic Data



The 9625 handles both power and harmonic measurement data simultaneously.

Features

■ Time Series Graph Display Function

Measurement data can be displayed as a time series graph. Demand data measured in different series can be overlaid on the display.

■ Summary Display Function

Measurement data can be displayed directly in table form.

■ Daily, Weekly and Monthly Report Display Function

Daily, weekly and monthly reports of demand data can be displayed.

■ Harmonic Analysis Function

Display harmonic measurement data as a graph, list or waveform. (Also compatible with the harmonic measurement data captured by Model 3166.)

■ Print Function

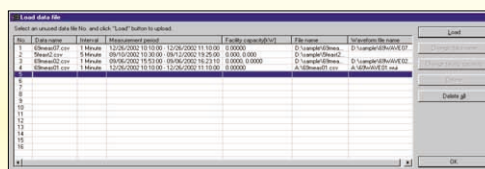
Each screen can be printed.

Easily display and print various screens such as graphs and spreadsheet tables

Step 1. Load measurement data

Load up to 16 data sets from the 3169-20/21 or 3166 at once. Measured numerical values and waveform data are recognized and displayed automatically.

1. Loading and deleting data, and changing data names, can be done easily.
2. Multiple sets of measurement data can be loaded and managed in a single file.



Step 2. Select the display (screen) type

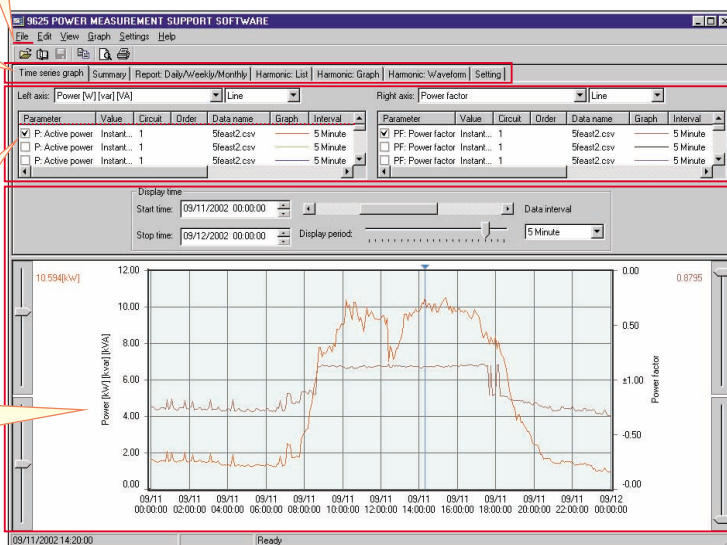
Select from time series graph, summary, daily, weekly or monthly report, harmonic list, harmonic graph, harmonic waveform or settings.

Step 3. Select display items (two-axis display is possible)

1. Select the data items (up to 16) to display.
For graph displays, the type of graph (line or bar) can be selected.
2. Enter details for data display. (data item names, levels, etc.)

Step 4. Set the start/stop times and data interval to be displayed

1. Set the data period to display. (start/stop time and data interval)
 - The displayed period can be easily changed by scrolling.

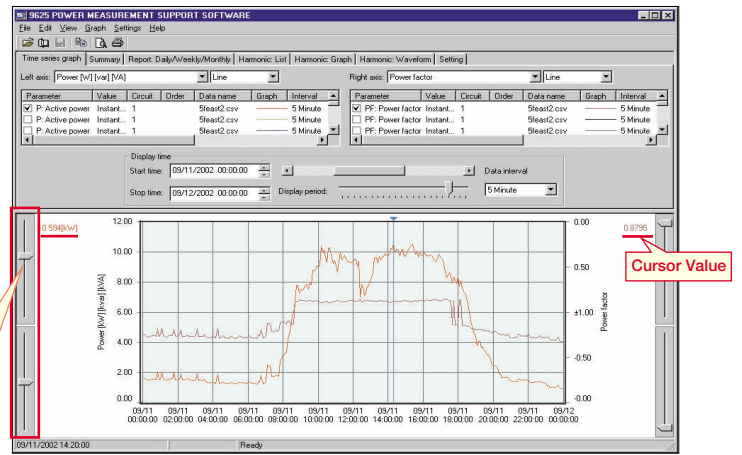


Time Series Graph Display Function (two-axes display possible)

- The displayed graph can be set to suit particular start/stop times and data intervals. Harmonic time series graphs can be displayed.

Convenient Functions

- The horizontal (time) axis can be easily scrolled to show the desired range.
- Upper and lower limits (measurement values) of the vertical axis can be easily set and changed.
* Graph type (line, bar or stacked bar), line type (such as solid or dashed), color and details of upper and lower numerical values can be set.
- Any desired numerical data value on a graph can be confirmed and displayed by cursor movement.
- The display can be switched between 2D and 3D graphs.



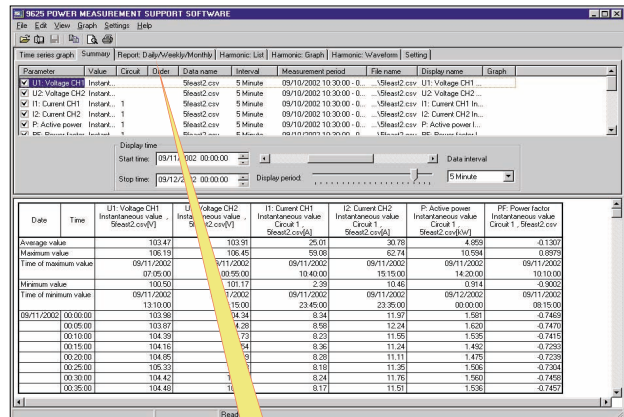
Summary Display Function

Summary

- Displays a summary of the data values between specified start/stop times, at the specified data interval.

Convenient Functions

- In addition to measurement values within the period being displayed, the summary shows period, maximum, minimum and average values.
- Measurement data names and measurement units can be edited in the summary.

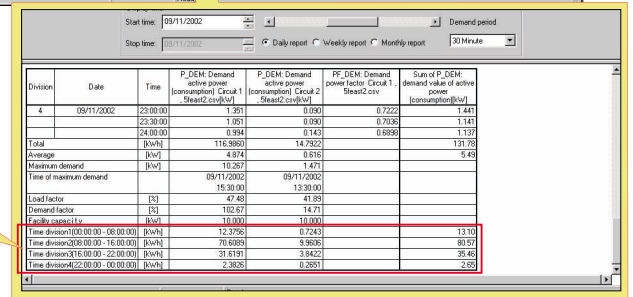
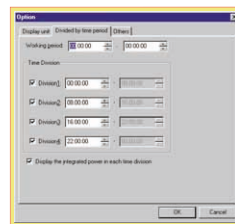


Daily, Weekly or Monthly Report Display

- Displays a summary covering the total values in daily, weekly or monthly reports.

Convenient Functions

- The time axis for each total scrolls to easily change the totalized period.
- The total time range of measurement data can be totalized in up to four sections per time period.



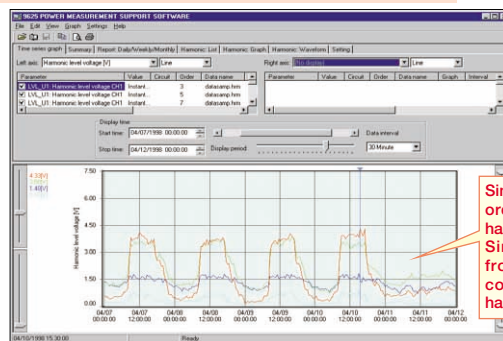
Harmonic Display Function Harmonic data measured by the 3169-20/21 and 3166 can be displayed in various ways

Harmonic Time Series Display

- While displaying a time series graph, select the harmonic item for the vertical axis to display a time series graph of harmonics.

Convenient Functions

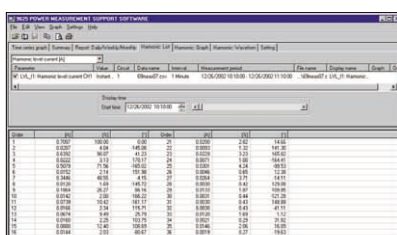
- Up to 32 graphs can be displayed simultaneously using 2-axes display.
For one circuit measurement, up to 32 orders can be graphed. Using multiple instruments, time series of harmonics can be easily compared.
- Any desired chronological detail can be easily confirmed using the cursors on the graph.



Simultaneously display multiple orders to confirm changes in harmonics!
Simultaneously display data from multiple instruments to confirm concurrent series of harmonics!

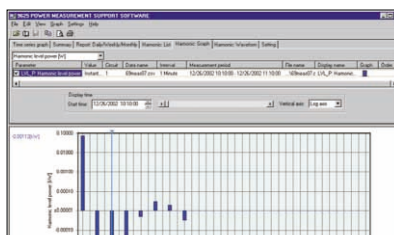
Harmonic List Display

- Displays harmonic data for the selected display item as a list.



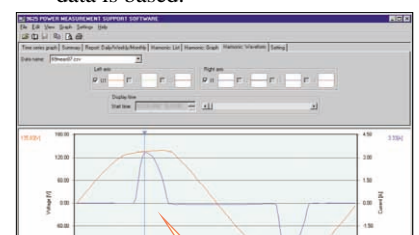
Harmonic Graph Display

- Displays harmonic data for the selected display item as a bar graph.



Harmonic Waveform Display

- Displays the voltage and current waveforms upon which harmonic data is based.



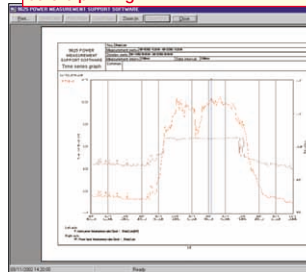
■ Settings Display Function

When you select a data name to be load, the measuring instrument model and setting conditions at measurement time are displayed.

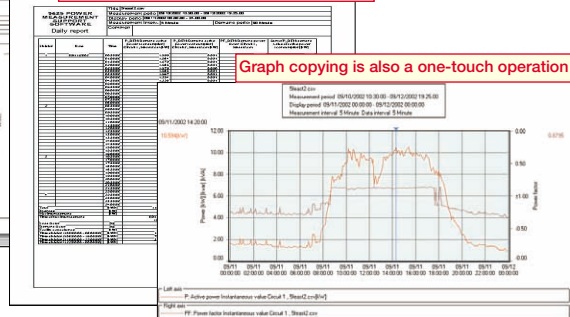
Measurement data and measurement conditions can be managed at the same time.

9625 POWER MEASUREMENT SUPPORT SOFTWARE		
File Edit View Graph Settings Help		
Time series graph Summary Report: Daily/Weekly/Monthly Harmonic: List Harmonic: Graph Harmonic: Report		
Data name: Stead2.csv		
Parameter	Setting	
Model number	3169	
Version	Ver1.02	
ID number	001	
Wiring	1P3W	
Number of circuits	2	
Voltage range	150V	
VT (PT) ratio	1.00	
Current range	Circuit 1: 100A Circuit 2: 100A	
CT ratio	Circuit 1: 1.00 Circuit 2: 1.00	
Reactive power meter method	OFF	
Sampling	P.L.	
P.L.L. source	UT	
Measurement line frequency	60Hz	
Measurement interval	5 Minute	
Measurement start time	09/10/2002 10:30:00	
Measurement stop time	09/12/2002 19:25:00	

Preview printing to confirm print results before printing



Produce daily, weekly or monthly reports by one-touch report printing



Graph copying is also a one-touch operation

■ 9625 Specifications

■ General Specifications

Supported instrument models : 3169-20, 3169-21 and 3166 (CLAMP ON POWER HiTESTERs)

Operating environment : Computer: PC-AT compatible (DOS/V machine)
 CPU: Pentium 200 MHz or higher
 Memory: 128 MB or more (recommended)
 Hard disk: 128 MB or more free space
 Display: XGA (1024×768) or higher
 Disc device: CD-ROM drive (for installation)
 Operating system: Windows95/98, NT4.0, 2000, Me, XP (English edition)
 Internet Explorer 4.0 or later

Supplied Media : One CD-R disc

■ Functional Specifications

[Data Load/Save Functions]

	Loading data	File extension	Data format	Data contents
3169-20/21	Data file	CSV	CSV	Instantaneous value, average value, maximum value, minimum value, integrated value, demand value, harmonic
	Waveform data file	WUI	Binary	Instantaneous waveform
	Short-interval data file	BIN	Binary	Instantaneous values
3166	Integrated measurement data file	ITG	CSV	Instantaneous value, integrated value
	Demand measurement data file	DEM	CSV	Instantaneous value, maximum value, minimum value, demand value
	Harmonic measurement data file	HRM	CSV	Instantaneous value, average value, maximum value
	Waveform data file	WUI	Binary	Instantaneous waveform
	Setting file	SET	-	
9625	Combined file	DAT	Binary	

	Save data	File extension	Data format
9625	Combined file	DAT	Binary

Maximum data capacity : Up to 528 MB per data set (total composite data up to 1.5 GB)

[Time Series Graph Display Function]

Graph display item : Voltage, current, active power, reactive power, apparent power, power factor, frequency, Integrated value (active power, reactive power), demand, harmonic (level, content ratio, phase angle, total value, THD)

Y-axis upper/lower limit setting : The display position (upper and lower display limits) of the vertical (Y) axis of a graph can be set by scroll bar or by specifying values.

Interval setting : Select each cycle, or 0.1, 0.2, 0.5, 1, 2, 5, 10, 15 or 30 sec.; 1, 2, 5, 10, 15 or 30 min.; or 1, 2, 3, 4, 6, 8 or 12 h; or 1 day

Display period range setting : An optional analysis period can be specified from the overall measurement data period
 (1) Analysis start date and time (YMD, HMS) is specified numerically
 (2) Analysis stop date and time (YMD, HMS) is specified numerically

Reference value setting : Display set standard value

Graph type selection : Line, bar, 2-axes and 3-dimensional

Graph line type & color setting : Line type and display color can be set for each data set, and marker display is possible

Stacked bar graph display : Up to 16 types of data series (demand value, demand quantity) can be displayed in an overlay graph

Cursor measurement : Measurement values can be displayed by the cursor

Data display units setting : Engineering units (m, k, M, G, etc.) can be selected

[Summary Display Function]	
Display item selection	: Select the items to display in the summary
Daily, weekly and monthly report display	: Displays a report for the specified daily weekly or monthly period
Load factor calculation display	: Calculates the load factor and demand factor as a daily, weekly or monthly report, and displays the results
Independent time range totalizing	: Specify up to four time ranges and totalize data for each time range independently
[Harmonic Display Function]	
Waveform display	: Displays waveform data for a specified time
List display	: Displays a list of harmonic data for a specified time
Graph display	: Display a bar graph of harmonic data for a specified time
Cursor measurement	: Displays the value at the cursor with waveform and graph displays
[Setting Display Function]	
Setting display	: Displays a list of the setting conditions Loads setting conditions from a data file (3169-20/21) Loads setting conditions from a settings file (3166)

[Copy Function]	
Copies to the clipboard	: Each display can be copied to the clipboard
[Print Function]	
Printing a displayed time series graph	: Previews and prints the contents displayed on a time series graph
Printing a displayed summary	: Previews and prints the contents displayed in a summary
Printing a harmonic display	: Previews and prints the contents displayed in a harmonic spreadsheet
Printing the settings display	: Previews and prints the contents displayed in the settings display
Comment entry	: Text comments can be entered in any printout
Printing support	: Any color or monochrome printing supported by the operating system
[Display Language]	
Language	: English

■ 3169-20/21 Specifications

■ Basic Specifications

Measurement line type	: Single-phase 2-wire, single-phase 3-wire, three-phase 3-wire, and three-phase 4-wire systems (50/60 Hz)
Number of systems that can be measured (for systems that share the same voltage)	: Single-phase: 1P2W 4 systems 1P3W 2 systems Three-phase: 3P3W2M (measures the voltage and current for two lines) 2 systems 3P3W3M (measures the voltage and current for all three lines) 1 system 3P4W (measures the voltage and current for three lines) 1 system 3P4W4I (measures the voltage for three lines and the current for four lines)
Item	: Voltage, current, active power, reactive power, apparent power, power factor, integrated value, frequency, harmonics
Measurement range	: For the voltage, current, and active power ranges, see the range configuration tables on page 2.
Measurement method	: Simultaneous digital sampling of voltage and current, PLL synchronization or a fixed clock (50/60 Hz)
Input methods	: Voltage: Isolated input Current: Isolated input using a clamp-on sensor
Effective measurement area	: Within 5 to 110% of the range
Total display area	: Voltage and current: Within 0.4 to 130% of the range (zero is suppressed for less than 0.4%) Power: Within 0 to 130% of the range (zero is suppressed when the voltage or current is zero) Harmonic level: Within 0 to 130% of the range
Display	: 5.7-inch LCD (320 × 240 dots), with backlight
Range switching method	: Manual (the current range can be set for each system)
Display update rate	: Approx. every 0.5 seconds (except when using a PC card while accessing the internal memory, or when performing RS-232C communications)
Input resistance (50/60 Hz)	: Voltage: 2.0 MΩ ± 10% (differential input) Current: 200 kΩ ± 10%
Maximum input	: Voltage input: 780 Vrms AC, peak value: 1103 V Current input: 1.7 Vrms AC, peak value: 2.4 V
Maximum rated voltage to earth	: Voltage input terminals: 600 Vrms AC (50/60 Hz)
Crest factor	: Voltage: Less than 2 (for full-scale input) Current: Less than 4 (for full-scale input. However, less than 2 for the 500 A, 1 kA, and 5 kA ranges)
Internal memory capacity	: 1MB

■ Display Specifications

Instantaneous value display	: Voltage, current, active power, reactive power, apparent power, power factor, frequency, average voltage, average current, (average values are for each system)
Average value display	: Voltage, current, active power, reactive power, apparent power, power factor, frequency, average voltage, average current * The average value from the beginning of time series measurement until the present.
Maximum/minimum value display	: Voltage, current, active power, reactive power, apparent power, power factor, frequency * The maximum/minimum value from the beginning of time series measurement until the present.
Integrate display	: Integrated value Active power (consumption/regeneration) Reactive power (lag/lead) * The total integrated value from the beginning of time series measurement.
Demand volume display (Integrated value within the specified interval)	: Integrated value Active power volume (consumption/regeneration) Reactive power volume (lag/lead) * The integrated value within each specified interval (latest value).
Demand value display (average value within the specified interval)	: Active power (consumption), reactive power (lag), power factor * The demand value within each specified interval (previous value).
Maximum demand value display (average value within the maximum specified interval)	: The maximum demand value since the beginning of time series measurement and the time and date it occurred.
Harmonics list	: List of the items measured for the specified harmonic (numerical value). (including the total value and total harmonic distortion factor (THD-F/THD-R))
Harmonics graph	: Bar graph or vector diagram of the items measured for the specified harmonic. (cursor measurement, magnification update, with a linear/LOG axis selection function)
Waveform display	: Voltage and current waveforms (with a magnification update function)
Measurement value enlargement display	: Select and enlarge up to 5 items from the instantaneous value display.

■ Measurement Specifications

[Voltage/current measurement]	
Measurement method	: True RMS method
Measurement display	: Measurement of three voltage lines and 3 or 4 current lines is possible when using three-phase 3-wire and three-phase 4-wire systems
[Active power measurement]	
Measurement display	: For three-phase 3-wire (the 3P3W3M setting), refer to the display for phase power values.
Polarity display	: For consumption: no symbol, for regeneration: "-"
[Reactive power measurement]	
Using the reactive power measurement method	: ON: Measures the reactive power directly using the reactive power measurement method OFF: Calculates the reactive power from the measurement values for voltage, current, and active power
Polarity display	: For lag phase (LAG: current is slower than voltage): no symbol For lead phase (LEAD: current is faster than voltage): "-" (Reactive power measurement method "ON")
[Apparent power measurement]	
Polarity display	: No polarity
[Power factor measurement]	
Measurement range	: -1.0000 (lead) to 0.0000 to +1.0000 (lag)
Polarity display	: For lag phase (LAG: current is slower than voltage): no symbol For lead phase (LEAD: current is faster than voltage): "-"
[Frequency measurement]	

[Frequency measurement]	
Measurement range	: 40.000 to 70.000 Hz
Input area for guaranteed accuracy	: Within 10 to 110% of the range (for sine wave input)
Measurement source	: Voltage U1
[Integrated measurement]	
Measurement range	: Active power : 0.00000 mWh to 99999.9 GWh consumption -0.00000 mWh to -99999.9 GWh regeneration Reactive power : 0.00000 mvarh to 99999.9 Gvarh lag -0.00000 mvarh to -99999.9 Gvarh lead
Measurement display	: Active power : Displays consumption and regeneration separately Reactive power : Displays lag and lead separately
[Harmonic measurement]	
Measurement range	: Basic wave frequency: 45 to 66 Hz
Measurement method	: PLL synchronization
Order for analysis	: Up to the 40th order
Window width	: A single cycle (number of data points analyzed: 128 points)
Window type	: Rectangular
Analysis rate	: 1/16 cycles
Item for analysis	: Harmonic level: The voltage, current, or power level for each harmonic order Harmonic content percentage: The voltage, current, or power content percentage for each harmonic order Harmonic phase angle: The voltage, current, or power phase angle for each harmonic order Total value: The total value for voltage, current, or

Setting Specifications

[Setting contents]	
Measurement line settings	1P2W, 1P3W, 3P3W2M, 3P3W3M, 3P4W, 3P4W4I
Clamp-on sensor settings	9660, 9661, 9667, and 9669 (* A different sensor can be set for each system.)
VT (PT) and CT ratio settings	0.01 to 9999.99 (* A different CT ratio can be set for each system.)
Measurement start method	Manual or time (year, month, day, hour, minute)
Measurement stop method	Manual, time, or timer (1 seconds to 8784 hours)
Output Interval	Standard or fast (*Maximum measurement period: 1 year) Standard interval: 1, 2, 5, 10, 15, or 30 seconds, or 1, 2, 5, 10, 15, 30, or 60 minutes Fast interval: A single waveform, or 0.1, 0.2, or 0.5 seconds
Data output destination	PC card, internal memory, or printer
File name	Automatically attached, or set the desired name (up to 8 alphanumeric characters)
Display averaging circuit	OFF, 2, 5, 10, 20 times (for movement averaging)
Screen copy destination	PC card, internal memory, or printer
Display language settings	Japanese, English, German, French, Italian, Chinese (Simple, Trad), Spanish, Korean
Other settings	Reactive power measurement method selection, harmonic distortion selection, order display selection, backlight settings, ID settings, clock settings, etc.
[File operations]	
Copy file	Copies files from the internal memory to the PC card.
Load/Save selected file	Loads/Saves the file(s) selected from the internal memory or PC card.
Delete file	Deletes the file(s) from the PC card.
Format	Initializes the PC card or internal memory.
Storage format	Measurement data: CSV format (binary format when using the fast interval setting) Waveform data: Binary format Screen data: BMP format Settings data: CSV format

[Data output item]	
Instantaneous values	Voltage, current, active power, reactive power, apparent power, power factor, frequency, average voltage, average current, (average values are for each system) * The instantaneous value for interval output.
Average value	Voltage, current, active power, reactive power, apparent power, power factor, frequency, average voltage, average current, (average values are for each system) * The average value for each interval.
Maximum/minimum value	Voltage, current, active power, reactive power, apparent power, power factor, frequency * The maximum/minimum value for each interval (no event details provided).
Integrated value	Active power (consumption/regeneration) Reactive power (lag/lead) * The total value since the beginning of time series measurement, and the power volume for each interval.
Demand value	Active power (consumption), reactive power (lag), power factor * The value for each interval.
Maximum demand value	The maximum demand value since the beginning of time series measurement and the time and date it occurred.
Harmonic	Each harmonic order (level, content percentage, and phase angle), total value, instantaneous value for THD-F/THD-R Each harmonic order (level, content percentage, and phase angle), total value, average value for THD-F/THD-R for each interval Each harmonic order (level, content percentage, and phase angle), total value, maximum/minimum value for THD-F/THD-R within each interval (no event data provided)
Waveform	Waveform (Voltage or current)
Status information	Exceeds the voltage/current crest factor, PLL unlock, power failure, exceeds the display limit
[Print items]	
Numerical values	Prints the data selected as the data output item (during time series measurement).
Waveform	Hard copy of the screen (printing of each interval not available)

External Interface Specifications

[D/A output] (3169-21 only)	
Number of output channels	4 channels
Output items	For instantaneous values: Voltage, current, average voltage, average current, Active power, reactive power, apparent power, power factor, frequency For Integrated value: Active power (consumption/regeneration) or reactive power (lag/lead) For harmonics: Each harmonic order (level, content percentage, and phase angle), total value, THD-F/THD-R
Output level	±5V DC/f.s.
Resolution	Polarity + 11 bits
Output accuracy	Measurement accuracy ±0.2% f.s.
Temperature characteristic	Less than ±0.02% f.s./°C
Output resistance	100Ω ±5%
Output update rate	For each cycle of measurement input (when a measurement item other than harmonics is set) For every 16 cycles of measurement input (when harmonics is set as the measurement item)
[PC card]	
	Slot: 1 × PC Card Standard-compliant Type II Card type: Flash ATA card Compatible memory capacity: Up to 528 MB Storage content: Settings data, measurement data, screen data
[RS-232C]	
	Printer or PC connected to an RS-232C interface Compliance: EIA RS-232C-compliant Transfer method: Asynchronous communication method, full duplex Baud rate: 2400, 9600, 19200, 38400 bps Flow control and delimiter settings possible
[External I/O]	
Control input	Start/stop control for time series measurement, data storage
Control output	LOW level is output during time series measurement.
Control signal level	A 0/5 V logic signal or a short-circuit/release contact signal

Formulae

(for single-phase 2-wire systems)

$$\text{Voltage } U = \sqrt{\frac{1}{M} \sum_{s=0}^{M-1} (Us)^2}$$

$$\text{Current } I = \sqrt{\frac{1}{M} \sum_{s=0}^{M-1} (Is)^2}$$

$$\text{Active Power } P = \frac{1}{M} \sum_{s=0}^{M-1} (Us \times Is)$$

U : Inter-line voltage

I : Line current

M : Number of samples

s : Sample count

m : 128 samples per cycle

Measurement is also possible using the reactive power measurement method

In addition to conventional calculation methods that search for reactive power using voltage, current, and active power, you can select the reactive power measurement method, which derives reactive power directly from voltage and current values, just as with the reactive power volume measurement method used in large-volume power consumers.

When using the reactive power measurement method:

$$\text{Reactive power } Q = \frac{1}{M} \sum_{s=0}^{M-1} \left\{ Us \times I \left(s + \frac{m}{4} \right) \right\}$$

$$\text{Apparent power } S = \sqrt{P^2 + Q^2}$$

$$\text{Power factor } PF = \frac{P}{\sqrt{P^2 + Q^2}}$$

Derives reactive power directly from voltage and current values, just as with the measurement of active power.
(The same measurement principle is the same as that used to determine reactive power by large-volume power consumers.)

When not using the reactive power measurement method:

$$\text{Reactive power } Q = \sqrt{S^2 - P^2}$$

$$\text{Apparent power } S = U \times I$$

$$\text{Power factor } PF = \frac{P}{S}$$

Calculates reactive power after calculating the apparent power using the voltage, current, and RMS values.

General Specifications

Operating environment	Indoors, up to 2000m(78.74ft) ASL
Operating temperature and humidity	0 to 40°C, 80% RH or less (non-condensating)
Storage temperature and humidity	-10 to 50°C, 80% RH or less (non-condensating)
Withstand voltage (50/60 Hz for 15 sec.)	5.55 kVrms AC: Between the voltage input terminal and the 3169 casing 3.32 kVrms AC: Between the voltage input terminal and the current input terminal/external interface terminal 2.3 kVrms AC: Between the power supply and the 3169 casing 1.39 kVrms AC: Between the power supply and the current input terminal/external interface terminal
Power supply voltage rating	100 to 240 V AC, 50/60 Hz
Maximum rated power	30 VA
Dimensions and weight	Approx. 210(8.27") W × 160(6.30") H × 60D(2.36") mm (excluding protrusions),

Conforming standards	Safety EN61010-1:2001 Pollution degree 2, measurement category (anticipated transient overvoltage 6000V) EMC EN61326:1997+A1:1998+A2:2001 Class A EN61000 - 3 - 2:2000, EN61000 - 3 - 3:1995+A1:2001
Accessories	9438-03 voltage cord set (1) (1 cord each of black, red, yellow, and blue), voltage cord (1), input cord label (1), operating manuals (2) (Advanced edition and Quick Start Guide), CD-R (1) (Advanced edition), RS-232C interface operating manuals and CSV conversion Software, 9441 connection cable (1) (for the 3169-21 only)

Measurement accuracy (Guaranteed accuracy period : 1 year)

Voltage	Current/active power
$\pm 0.2\% \text{rdg.} \pm 0.1\% \text{f.s.}$	$\pm 0.2\% \text{rdg.} \pm 0.1\% \text{f.s.} + \text{clamp-on sensor accuracy}$

Conditions of guaranteed accuracy	: After 30 minutes of warm-up, sine-wave input, PF=1
Temperature and humidity	for : $23^\circ\text{C} \pm 5^\circ\text{C}$, less than 80% relative humidity
Fundamental waveform range	for : 45 to 66 Hz
Display area for guaranteed accuracy	: Effective measurement area

Table of current and active power accuracy with clamp-on sensor combinations

Current range	9694	9695-02	9660, 9695-03	9661	9669	9667
0.5A	$\pm 0.5\% \text{rdg.} \pm 0.3\% \text{f.s.}$	$\pm 0.5\% \text{rdg.} \pm 2.1\% \text{f.s.}$	-	-	-	-
1A	$\pm 0.5\% \text{rdg.} \pm 0.2\% \text{f.s.}$	$\pm 0.5\% \text{rdg.} \pm 1.1\% \text{f.s.}$	-	-	-	-
5A	$\pm 0.5\% \text{rdg.} \pm 0.12\% \text{f.s.}$	$\pm 0.5\% \text{rdg.} \pm 0.3\% \text{f.s.}$	$\pm 0.5\% \text{rdg.} \pm 0.5\% \text{f.s.}$	$\pm 0.5\% \text{rdg.} \pm 1.1\% \text{f.s.}$	-	-
10A	-	$\pm 0.5\% \text{rdg.} \pm 0.2\% \text{f.s.}$	$\pm 0.5\% \text{rdg.} \pm 0.3\% \text{f.s.}$	$\pm 0.5\% \text{rdg.} \pm 0.6\% \text{f.s.}$	-	-
50A	-	$\pm 0.5\% \text{rdg.} \pm 0.12\% \text{f.s.}$	$\pm 0.5\% \text{rdg.} \pm 0.14\% \text{f.s.}$	$\pm 0.5\% \text{rdg.} \pm 0.2\% \text{f.s.}$	-	-
100A	-	-	$\pm 0.5\% \text{rdg.} \pm 0.12\% \text{f.s.}$	$\pm 0.5\% \text{rdg.} \pm 0.15\% \text{f.s.}$	$\pm 1.2\% \text{rdg.} \pm 0.2\% \text{f.s.}$	-
200A	-	-	-	-	$\pm 1.2\% \text{rdg.} \pm 0.15\% \text{f.s.}$	-
500A	-	-	-	$\pm 0.5\% \text{rdg.} \pm 0.11\% \text{f.s.}$	-	$\pm 2.2\% \text{rdg.} \pm 0.4\% \text{f.s.}$
1000A	-	-	-	-	$\pm 1.2\% \text{rdg.} \pm 0.11\% \text{f.s.}$	-
5000A	-	-	-	-	-	$\pm 2.2\% \text{rdg.} \pm 0.4\% \text{f.s.}$

Reference: Accuracy of the 9694, 9695-02, 9695-03, 9660, 9661, 9667, and 9669 CLAMP ON SENSORS

- 9694 (rated for 5 A) : $\pm 0.3\% \text{rdg.} \pm 0.02\% \text{f.s.}$
- 9695-02 (rated for 50 A) : $\pm 0.3\% \text{rdg.} \pm 0.02\% \text{f.s.}$
- 9695-03 (rated for 100 A) : $\pm 0.3\% \text{rdg.} \pm 0.02\% \text{f.s.}$
- 9660 (rated for 100 A) : $\pm 0.3\% \text{rdg.} \pm 0.02\% \text{f.s.}$
- 9661 (rated for 500 A) : $\pm 0.3\% \text{rdg.} \pm 0.01\% \text{f.s.}$
- 9669 (rated for 1000 A) : $\pm 1.0\% \text{rdg.} \pm 0.01\% \text{f.s.}$
- 9667 (rated for 5000 A) : $\pm 2.0\% \text{rdg.} \pm 1.5\text{mV}$
(500 A range: For 50 to 500 A input)
(5000 A range: For 500 to 5000 A input)





* f.s. is the sensor's rated primary current value.




Note: The table of accuracy for different clamp-on sensor combinations indicates the measurement accuracy for each current range of the 3169-2021.
(The accuracy for each clamp-on sensor is converted and displayed according to the 3169-2021 current measurement range.)

Apparent power accuracy	: ± 1 dgt. for the calculation obtained from each measurement value
Reactive power accuracy	: When using the reactive power measurement method $\pm 0.2\% \text{rdg.} \pm 0.1\% \text{f.s.} + \text{clamp-on sensor accuracy}$ When not using the reactive power measurement method ± 1 dgt. for the calculation obtained from each measurement value
Integration accuracy	: ± 1 dgt. for the measurement accuracy of effective power, reactive power, and apparent power
Power factor accuracy	: ± 1 dgt. for the calculation obtained from each measurement value
Frequency accuracy	: $\pm 0.5\% \text{rdg.} \pm 1$ dgt.

Frequency characteristic	: Fundamental waveforms up to the 50th order $\pm 3\% \text{f.s.} + \text{measurement accuracy (of a 45- to 66-Hz fundamental waveform)}$
Temperature characteristic	: Within $\pm 0.03\% \text{f.s.}/^\circ\text{C}$
Effect of in-phase voltage	: Within $\pm 0.2\% \text{f.s.}$ (600 Vrms AC, 50/60 Hz, between voltage input terminal and case)
Effect of external magnetic field	: Within $\pm 1.5\% \text{f.s.}$ (in a magnetic field of 400 A/m rms AC, 50/60 Hz)
Power factor influence	: $\pm 1.0\% \text{rdg.}$ (45 to 66 Hz, power factor = 0.5, for effective power measurement)
Effect of reactive factor	: $\pm 1.0\% \text{rdg.}$ (45 to 66 Hz, reactive factor = 0.5, when using the reactive power measurement method)
Real-time clock accuracy	: $\pm 10 \text{ ppm} \pm 1 \text{ second (} 23^\circ\text{C)} \text{ (within } \pm 1.9 \text{ sec/day (} 23^\circ\text{C))}$

Option Specifications

CLAMP ON SENSOR	9694	9660	9661	9669
Appearance	 Cord length: 3 m (9.84ft) CAT III 300V	 Cord length: 3 m (9.84ft) CAT III 300V	 Cord length: 3 m (9.84ft) CAT III 600V	 Cord length: 3 m (9.84ft) CAT III 600V
Primary current rating	AC 5 A	AC 100 A	AC 500 A	AC 1000 A
Output voltage	AC 10mV/A	AC 1mV/A	AC 1mV/A	AC 0.5mV/A
Accuracy	$\pm 0.3\% \text{rdg.} \pm 0.02\% \text{f.s.}$ Amplitude (45 to 66 Hz) Phase (45 Hz to 5 kHz) Within $\pm 2^\circ$	$\pm 0.3\% \text{rdg.} \pm 0.02\% \text{f.s.}$ Within $\pm 1^\circ$	$\pm 0.3\% \text{rdg.} \pm 0.01\% \text{f.s.}$ Within $\pm 0.5^\circ$	$\pm 1.0\% \text{rdg.} \pm 0.01\% \text{f.s.}$ Within $\pm 1^\circ$
Frequency characteristic	Within $\pm 1.0\%$ at 40 Hz to 5 kHz (deviation from accuracy)			Within $\pm 2.0\%$ at 40 Hz to 5 kHz (deviation from accuracy)
Effect of external magnetic field	Equivalent to 0.1 A or less (with a magnetic field of 400 A/m AC)			Equivalent to 1 A or less (with a magnetic field of 400 A/m AC)
Effect of conductor position	Within $\pm 0.5\%$			Within $\pm 1.5\%$
Maximum rated voltage to earth	300 V rms (insulated conductor)	300 V rms (insulated conductor)	600 V rms (insulated conductor)	600 V rms (insulated conductor)
Maximum input (45 to 66 Hz)	50 A continuous	130 A continuous	550 A continuous	1000 A continuous
Measurable conductor diameter	Less than $\phi 15 \text{ mm (0.59")}$	Less than $\phi 15 \text{ mm (0.59")}$	Less than $\phi 46 \text{ mm (1.81")}$	Less than $\phi 55 \text{ mm (2.17")}$, 80(3.15") \times 20 (0.79") mm bus bar
Dimensions and weight	46W(1.81") \times 135H(5.31") \times 21D(0.83") mm, 230g(9.9oz.)	46W(1.80") \times 135H(5.31") \times 21D(0.83") mm, 230g(9.9oz.)	77W(3.03") \times 151H(5.94") \times 42D(1.65") mm, 360g(12.7oz.)	99.5W(3.92") \times 188H(7.40") \times 42D(1.65") mm, 590g(20.8oz.)

CLAMP ON SENSOR	9667	9695-02	9695-03
Appearance	 Cord length: 2 m (6.56ft) Sensor - circuit: 1 m (3.28ft) CAT III 1000V	 CAT III 300V	 CAT III 300V
Primary current rating	AC 500 A, 5000A	AC 50 A	AC 100 A
Output voltage	AC 500 mV f.s.	AC 10 mV/A	AC 1 mV/A
Accuracy	$\pm 2.0\% \text{rdg.} \pm 1.5\text{mV}$ (for input 10% or more of the range) Amplitude (45 to 66 Hz) Phase (45 Hz to 5 kHz) Within $\pm 1^\circ$	$\pm 0.3\% \text{rdg.} \pm 0.02\% \text{f.s.}$ Within $\pm 2^\circ$	Within $\pm 1^\circ$
Frequency characteristic	Within $\pm 3 \text{ dB}$ at 10 Hz to 20 kHz (deviation from accuracy)	Within $\pm 1.0\%$ at 40 Hz to 5 kHz (deviation from accuracy)	
Effect of external magnetic field	Equivalent to 5 A, 7.5 A max (with a magnetic field of 400 A/m AC)	Equivalent to 0.1 A or less (with a magnetic field of 400 A/m AC)	
Effect of conductor position	Within $\pm 3.0\%$	Within $\pm 0.5\%$	
Maximum rated voltage to earth	1000 V rms (insulated conductor)	300 V rms (insulated conductor)	
Maximum input (45 to 66 Hz)	10000 A continuous	60 A continuous	130 A continuous
Measurable conductor diameter	Less than $\phi 254 \text{ mm (10.0")}$	Less than $\phi 15 \text{ mm (0.59")}$	

Find Quality Products Online at:

www.GlobalTestSupply.com

sales@GlobalTestSupply.com

Option Specifications

9442 PRINTER



Print method : Thermal serial dot printing
 Paper width : 112 mm(4.41ft)
 Print speed : 52.5cps
 Power supply : 9443-02/03 AC adapter, or supplied nickel-metal hydride battery (approx. 3000 lines of printing when fully charged and used with the 9443-02/03)
 Dimensions and weight : Approx. 160W (6.30") × 66.5H (2.62") × 17D (0.67") mm, approx. 580g (20.5oz.)

When purchasing the 9442 printer, make sure you also purchase the 9721 RS-232C cable and 9443-02/03 AC adapter so that you can connect it to the 3169-20/21.

9721 RS-232C CABLE



Cord length for connecting to the 9442: 1.5 m(4.92ft)

9443-02/03 AC ADAPTER



For the 9442

Photo: 9443-03

9440 CONNECTION CABLE

For external I/O



Cord length: 2m(2.65ft)

9441 CONNECTION CABLE

For D/A output (supplied with the 3169-21)



Cord length: 2 m(2.65ft)

3169-20 CLAMP ON POWER HiTESTER (supplied with the 9438-03 voltage cord (1), and power cord (1))

3169-21 (with D/A output) CLAMP ON POWER HiTESTER

(supplied with the 9438-03 voltage cord (1), 9441 connection cable (1) and power cord (1))

Accessory Specifications

9438-03 VOLTAGE CORD (1 cord each of black, red, yellow, and blue, cord length: 3 m(9.84ft))

9441 CONNECTION CABLE (D/A output cable, supplied with the 3169-21)

Current and power cannot be measured using the 3169-20/21 CLAMP ON POWER HiTESTER on its own. To perform current and power measurement, make sure you also purchase a CLAMP ON SENSOR (9694, 9660, 9661, 9667, or 9669) (sold separately). Use only PC Cards (9726, 9727 or 9728) sold by HIOKI.

Compatibility and performance are not guaranteed for PC cards made by other manufacturers. You may be unable to read from or save data to such cards.

Combination examples

For single-phase 2-wire systems (one system) : 3169-20 + 9660(100A) × 1 + 9726(128MB)

For single-phase 3-wire systems (one system/two single-phase 2-wire systems) : 3169-20 + 9660(100A) × 2 + 9726(128MB)

For three-phase 3-wire systems (one system) : 3169-20 + 9661(500A) × 2 + 9726(128MB)

For three-phase 3-wire systems (two systems/four single-phase 2-wire systems) : 3169-20 + 9661(500A) × 4 + 9726(128MB)

For three-phase 4-wire systems (one system) : 3169-20 + 9661(500A) × 3 + 9726(128MB)

9726 to 9728 PC CARD



Use only PC Cards (9726, 9727, or 9728) sold by HIOKI.

9720 CARRYING CASE



A soft type case for storing the 3169-20/21 and its accessories, such as the clamp-on sensors.

Dimensions and weight : Approx. 445W(17.52") × 340H(13.39") × 150D(5.91") mm, approx. 2.2 kg(77.6oz.)

9290-10 CLAMP ON ADAPTER



Cord length: 3 m(9.84ft)

Max. 1500 A AC (continuous: 1000 A)
 Measurable conductor diameter:
 Bus bar : ϕ 55 mm(2.17"), width 80 mm(3.46")
 CT ratio: 10:1
 *Used for expanding the measurement ranges of the 9660 and 9661 sensors

9219 CONNECTION CABLE

For connection to the 9695-02, 9695-03



Cord length: 3 m(9.84ft)

Options

9660	CLAMP ON SENSOR (AC 100A)
9661	CLAMP ON SENSOR (AC 500A)
9667	FLEXIBLE CLAMP ON SENSOR (AC 5000A)
9669	CLAMP ON SENSOR (AC 1000A)
9694	CLAMP ON SENSOR (AC 5A)
9695-02	CLAMP ON SENSOR (AC 50A)
9695-03	CLAMP ON SENSOR (AC 100A)
9219	CONNECTION CABLE (for connection to the 9695-02, 9695-03)
9290-10	CLAMP ON ADAPTER (AC 1500A)
9440	CONNECTION CABLE (for external I/O)
9612	RS-232C CABLE (for connection to a PC)
9442	PRINTER
9443-02	AC ADAPTER (for the 9442, for Europe)
9443-03	AC ADAPTER (for the 9442, for USA)
9721	RS-232C CABLE (for connection to the 9442)
1196	RECORDING PAPER (25 m(82ft)/10 rolls, for the 9442)
9720	CARRYING CASE
9625	POWER MEASUREMENT SUPPORT SOFTWARE
9726	PC CARD 128M
9727	PC CARD 256M
9728	PC CARD 512M

HIOKI