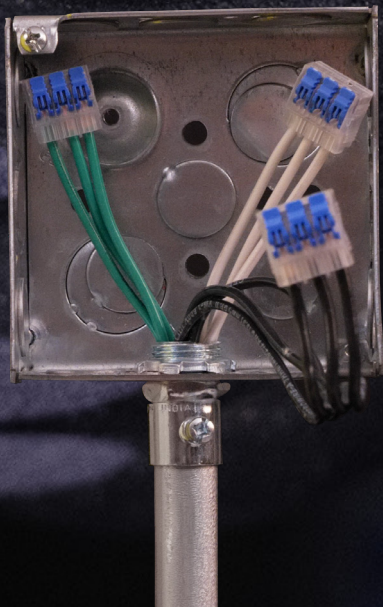


IN-SURE® LEVER

WIRE CONNECTORS



IDEAL
electrical™

Find Quality Products Online at:

www.GlobalTestSupply.com

sales@GlobalTestSupply.com

IN-SURE® LEVER

WIRE CONNECTORS




Secure Connections | Reusable - Solid and Stranded

Lever wire connectors provide the perfect solution for joining solid and stranded wires. These versatile connectors have a compact design and take up minimal room in junction boxes and enclosures.

- Secure, reliable and reusable
- Releasable connector for solid & stranded wires
- Modern alternative to traditional connectors
- Clear housing allows verification of connection
- Continuity check port and strip length guide
- Compact design for tight spaces
- Models L32, L33 and L35 listed for use with Cu/Cu and Cu/CC combinations
- Models L22, L23 and L25 - Solid wires can be inserted without opening lever

12 AWG Lever Wire Connectors




ORDERING INFORMATION

Model	# of Ports	Amp Rating	Wire Combination	Qty.	Part No.
L22	2	20A	600V* Solid Copper: 24 - 12 AWG (0,25-4mm²) Stranded Copper: 24 - 12 AWG	Box of 150	30-10L22
				Jar of 500	30-50L22J
				Box of 4,000	30-16L22
	L23			3	Box of 100
	Jar of 350				30-35L23J
	Box of 2,500				30-16L23
	L25			5	Box of 75
	Jar of 200				30-20L25J
	Box of 1,500				30-16L25

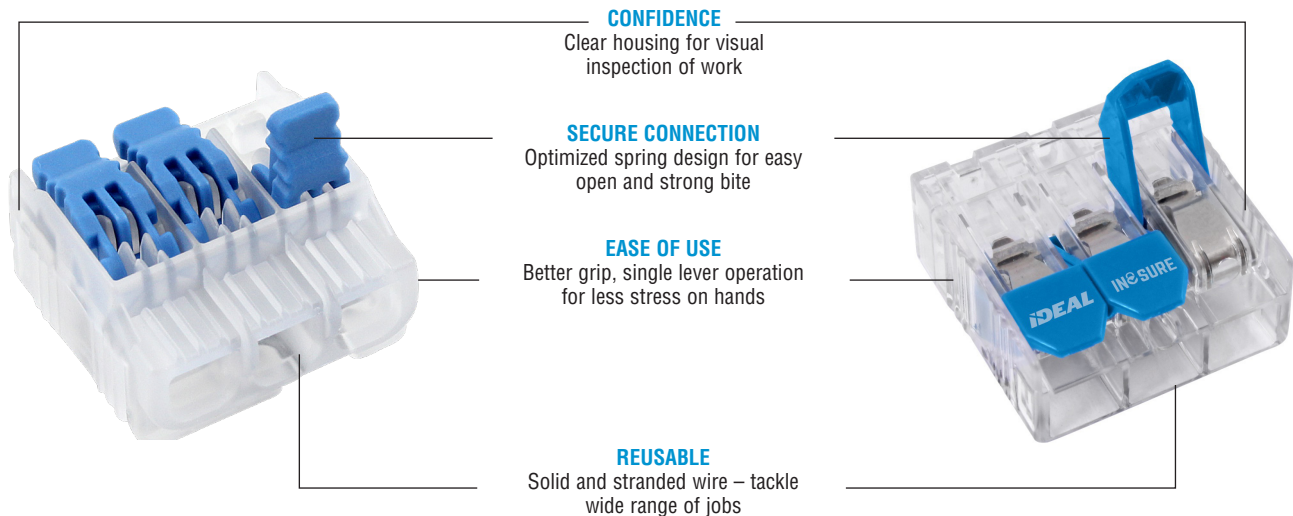
*1,000V in signs and fixtures. Temperature rating 105°C max. (221°F).
COPPER-TO-COPPER ONLY. Do not use on aluminum.

10 AWG Lever Wire Connectors

ORDERING INFORMATION

Model	# of Ports	Amp Rating	Wire Combination	Qty.	Part No.
L32 	2	30A	600V* Solid Copper: 22-10 AWG (0,5-6mm²) Solid-Copper Clad Aluminum: 12-10 AWG Stranded Copper: 22-10 AWG	Box of 100	30-10L32
L33 	3			Jar of 350	30-35L32J
				Box of 1,000	30-16L32
				Box of 75	30-10L33
L35 	5			Jar of 225	30-25L33J
				Box of 1,000	30-16L33
				Box of 50	30-10L35
				Jar of 125	30-15L35J
				Box of 500	30-16L35

*1,000V in signs and fixtures. Temperature rating 105°C max. (221°F). Listed for use with Cu-Cu and Cu-CC. DO NOT use with aluminum wire.



WARNING ⚠ Improper use or installation of this product may cause fire, electrocution, serious personal injury or death. Shut off power to the circuit or remove fuse before using this product. Use only connectors properly sized to the wiring being used. Consult local building codes for installation requirements.

WARNING: ⚠ Cancer and Reproductive Harm: www.P65Warnings.ca.gov.



IDEAL INDUSTRIES, INC.

