

# VerifEye®

## Submetering Solutions



# SMARTer Metering. SMARTer Control. REAL Savings.

## THE BENEFITS OF SUBMETERING

VerifEye® delivers a comprehensive line of submeters, communication products, and software tools to help you better manage energy use and reduce costs.

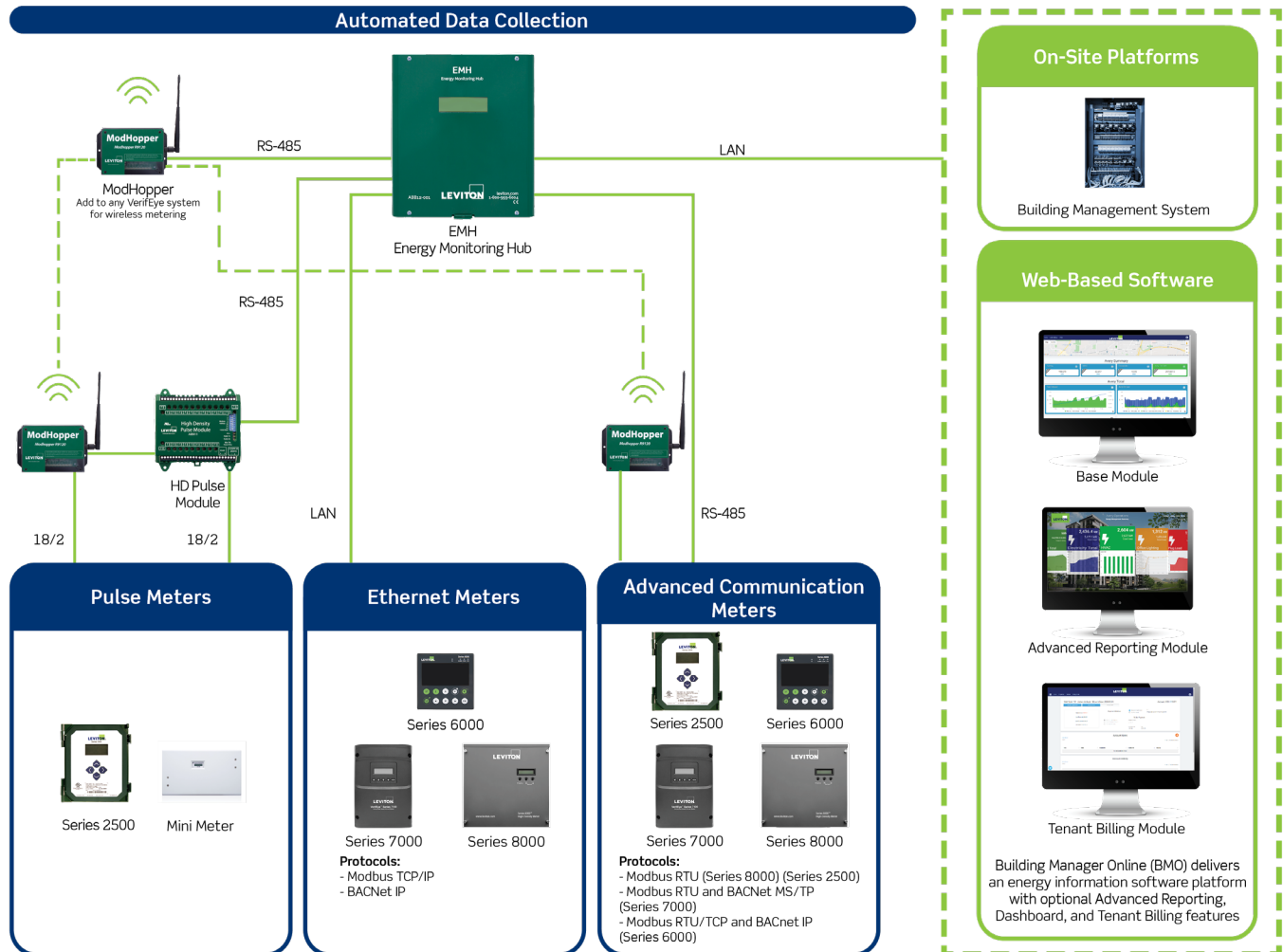
From tenant billing to energy measurement & verification (M&V), VerifEye offers scalable, cost-effective solutions that integrate easily with your building systems. This seamless solution enables smart metering, meets code compliance requirements, and simplifies the complexities of allocating energy costs and billing tenants.

With VerifEye, building owners and managers can better manage usage of electric, water, gas, and other utilities for long-term savings. Organizations that monitor and manage energy usage are better positioned to save money, stay competitive, and meet code compliance and building efficiency standards such as ASHRAE 90.1, IECC, California Title 24, New York Local Laws 88 and 133, Seattle City Code, and LEED v5.

### VerifEye delivers accurate information for:

- Load profiling & benchmarking
- Tenant billing/cost allocation
- Measurement & verification (M&V)
- Energy conservation programs
- Building codes and standards compliance
- Green initiatives including LEED certification
- Federal government energy program compliance
- Building management systems (AMR/BMS/EMS) integration

For additional energy savings, combine VerifEye with Leviton lighting controls for a complete energy management solution from a single source.



# Contents

## VERIFEYE SUBMETERING APPLICATIONS

- 4 High-Rise Residential Multi Dwelling Units (MDUs)
- 8 Residential Multi Dwelling Units (MDUs)
- 12 Commercial Offices/Mixed Use
- 16 Retail Malls
- 20 Educational and Professional Campuses
- 24 Industrial/Manufacturing Plants
- 28 Data Centers
- 29 Renewable Energy
- 30 EVSE Infrastructure

## VERIFEYE SUBMETERING SOLUTIONS

- 32 **VerifEye Meters**
- 36 Mini Meter Kits
- 38 Mini Meter Multiple Meter Units (MMUs)
- 41 Series 8000 Multi-Point High Density Meters
- 42 Series 7000 Advanced Branch Circuit Monitors
- 43 Series 7000 Three Phase Meters
- 44 Series 7000 Virtual Element Meters
- 45 Series 2500 Three Phase Meters
- 46 Series 6000 Industrial Panel Mount Meters
- 47 Current Transformers (CTs)
- 48 **VerifEye Communication Products**
- 49 Data Acquisition Hubs
- 50 Input/Output Modules
- 51 ModHopper
- 52 Wireless AMR
- 54 UL508A Panels
- 55 **Building Manager Online (BMO) Software**



Series 2500

Series 7000

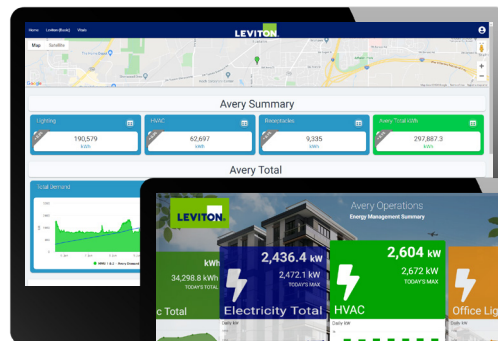


EMH

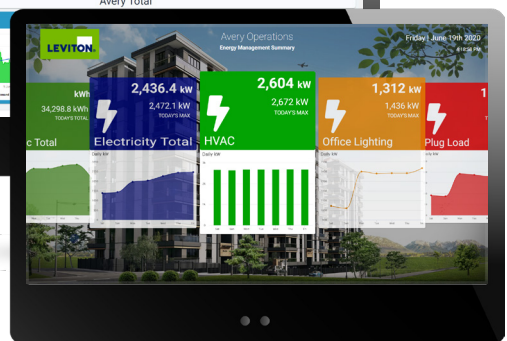
EMHXD

ModHopper

BMO Base Module



BMO Advanced Reporting Module



# High-Rise Residential MDUs

## New Construction Projects

With a VerifEye submetering solution utilizing Series 7000 Meters, Leviton can be your single source for a complete tenant metering solution designed specifically to suit high-density applications such as high-rise multiple dwelling units. A solution built around the Series 7000 is especially cost-effective for new

**PUTTING IT  
ALL TOGETHER**

See pages 6-7



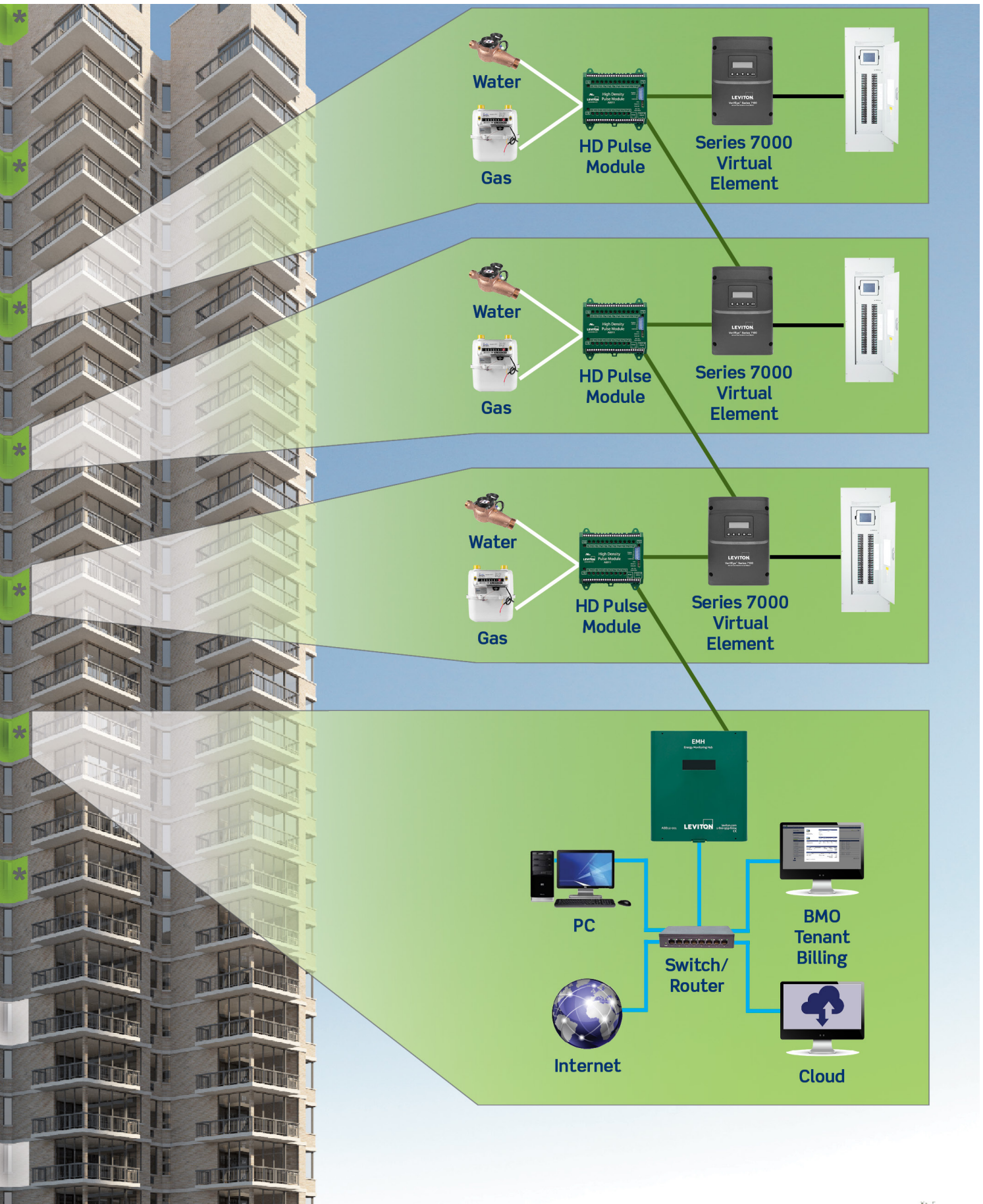
construction due to its capacity and flexibility. The Series 7000 submeter is easy to install and wire and allows complete flexibility to fit any project design and is configurable for any type of electrical service including:

- 120/208V 1P3W (120/208V 3P4W service at the panel)
- 120/240V 1P3W
- 120/208V 3P4W

### The Leviton Advantage

- Minimal wall space needed in electrical closets and reduced construction costs as compared to traditional metering
- Unique wiring harness minimizes installation labor and material cost (virtually eliminates the need to extend current transformer wires)
- Color coded current transformers to facilitate proper wiring
- Allows interface for water, gas, BTU, etc. meters into single communication system
- Leviton factory technicians provide system startup, programming and training services
- Open architecture provides flexibility to use your choice of third-party billing company or optional VerifEye Building Manager Online Tenant Billing web-based software

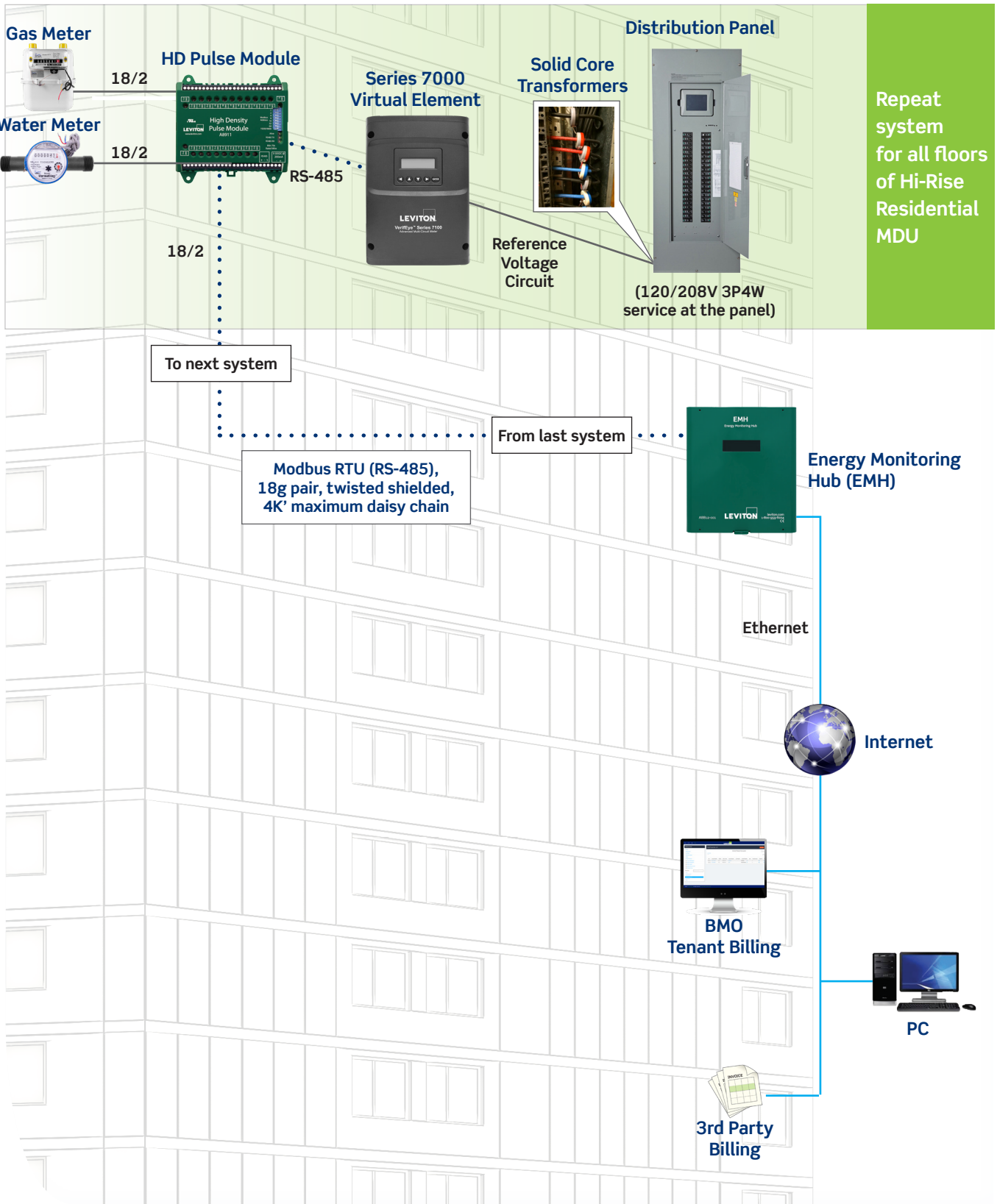




# High-Rise Residential MDUs

New Construction Projects

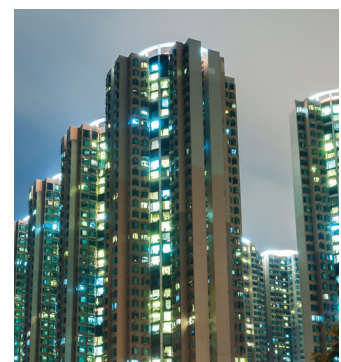
## PUTTING IT ALL TOGETHER



# CORE LEVITON COMPONENTS

High Rise Residential MDUs			
Product	Voltage	Description	Cat. No.
HD Pulse Module	—	HD Pulse Module, 23 inputs	A8911-023
Series 7000 Virtual Element Meter	90-600VAC	Series 7300 Branch Circuit Monitor, 48 inputs, LCD display, NEMA 1 enclosure	73D48-000
Energy Monitoring Hub	—	Energy Monitoring Hub	A8812-000
BMO Tenant Billing Module Software	—	BMO Tenant Billing Module Software	BMOTB-050

Note: These are examples of applications but should not be considered limitations to product and solution capability. Please contact your local Leviton representative for design assistance.



# Residential Multi-Dwelling Units

## Master Metered Buildings (Retrofit)

Ratio-based billing for utilities leaves much to be desired. There's nothing fair about a single, traveling salesperson in a two-bedroom unit paying the same share of the utilities as a family of four living in the same size unit. It's also nearly impossible to stabilize building owner profits because although MDU utility bills rise, it can be difficult to retain tenants if rents are hiked annually.

**PUTTING IT ALL TOGETHER**  
See pages 10-11



Leviton's VerifEye submetering solution provides the ability to lower utility costs by billing each apartment unit for what is actually

used. VerifEye offers a tenant metering solution with wireless communications that is ideally suited to retrofit MDU applications. The core of the system is a compact, flush-mount or surface mount Leviton Mini Meter that is installed in each unit along with a wireless transmitter.

This wireless system enables either staff or a third party billing company to generate accurate bills. The size of the components and minimal wiring required helps make this a relatively easy-to-install and cost-effective system, especially where risers feed multiple units. With a Leviton submetering solution, owners can allocate costs directly to the tenant and lower overall operating expenses. Get revenue grade accuracy for tenant billing applications in a compact, cost-effective solution.

### The Leviton Advantage

- Equitable unit/common-area cost allocation and accurate tenant billing eliminates burden of rising and unpredictable expenses
- Easy-to-retrofit and robust wireless communication system with small footprint
- Compact, flush mount or surface mount meter enclosure designed for installation in smaller apartments
- Allows for easy integration of water and gas meters as well
- Open architecture provides flexibility to use a third-party billing company
- Scalable, wireless repeater network can be used to accommodate large sites or added in the future for new tenants and building expansions

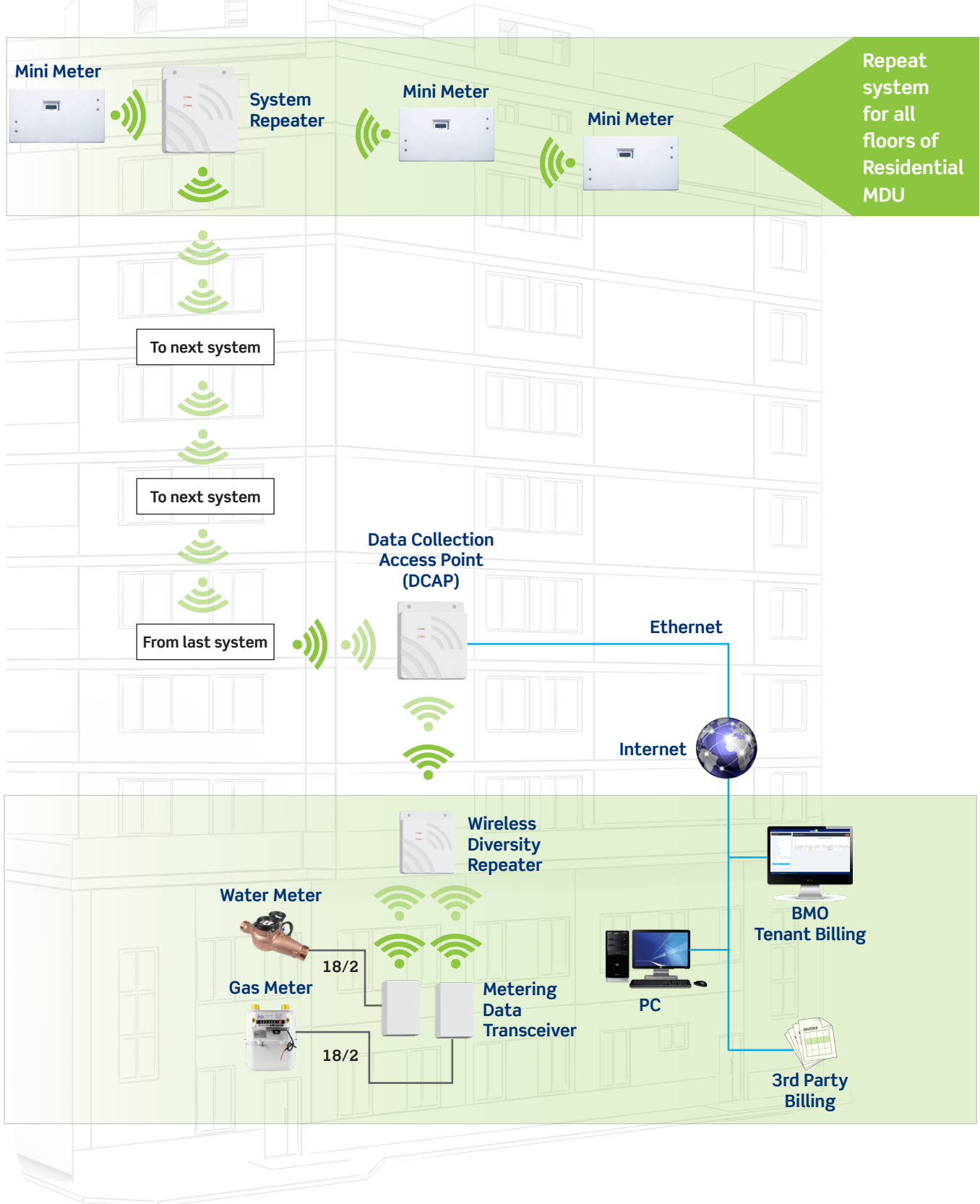




# Residential Multi-Dwelling Units

Master Metered Buildings (Retrofit)

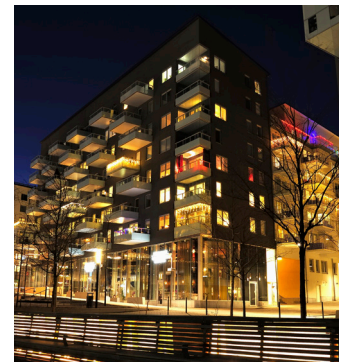
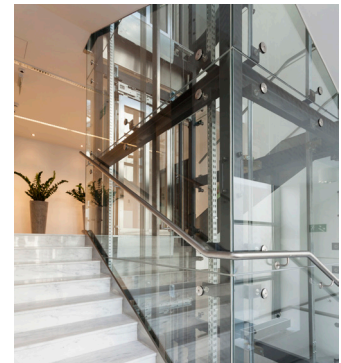
## PUTTING IT ALL TOGETHER



# CORE LEVITON COMPONENTS

Residential Multi-Dwelling Units				
Product	Voltage	Description	Amps	Cat. No.
Mini Meter with Metering Data Transceiver	120/208V 3W or 120/240V 1PH 3W (Split Phase)	Meter Data Transceiver (MDT), battery input model battery powered, daily reads only (No TOU)	200A	MDTFW-2SC MDTSW-2SC
Wireless Diversity Repeater	—	Repeater, 5V, includes 5VDC 1A plug-in power supply and internal backup battery	—	T95RX-000
Data Concentrating Access Point* <small>* All DCAPs and Gateways shipped with 6VDC, minimum 1.5 Amp power supply, Ethernet cable and USB cable</small>	—	Data Concentrating Access Point (DCAP), Low Capacity (150 meter points max), built-in radio receiver	—	T25DX-151
		DCAP, High Capacity (1000 meter points max), built-in radio receiver	—	T25DX-102
BMO Tenant Billing Module Software	—	BMO Tenant Billing Module Software	—	BMOTB-050

Note: These are examples of applications but should not be considered limitations to product and solution capability. Please contact your local Leviton representative for design assistance.



# Commercial Offices/ Mixed Use

## New Construction & Retrofit Applications

The benefits of implementing a cost-effective means of recovering utility costs, saving energy and reducing the carbon footprint can be substantial; even game changing. Whether for a small, two-story office building, a sprawling commercial office complex or a new mixed use facility, Leviton has the right combination of components and expertise to deliver the optimal solution.

**PUTTING IT  
ALL TOGETHER**  
See pages 14-15



There's no doubt that redirecting accountability for energy usage to tenants and streamlining accounting operations by installing

and implementing a Leviton submetering solution is a win-win in the commercial office/mixed use space. Precise monitoring of tenant utilities and building systems can identify opportunities for substantial cost savings. For a facility to be considered state of the art, it must incorporate technologies such as VerifEye submetering solutions. Leviton's energy management software can be used to push meter data to third party billing companies, energy monitoring software solutions, energy dashboards on kiosks or big screens displaying building energy conservation statistics and tenant awareness/sustainability messages.

### The Leviton Advantage

- Redirect responsibility for utility usage from property owners to tenants and encourage conservation
- Easy-to-install/retrofit metering system: minimally wired installation saves time and reduces labor costs
- Universal energy information system designed to meet or exceed all energy data project goals using open protocol system platform and interfaces
- Cost-effective and convenient method of monitoring usage for energy savings, code compliance and LEED measurement and verification
- Provides web-based access to real-time usage data and reports and accommodates third-party billing
- Set energy goals at the building or portfolio level with BMO Advanced Reporting Module
- Access the Advanced Reporting Module data remotely via the web-based software

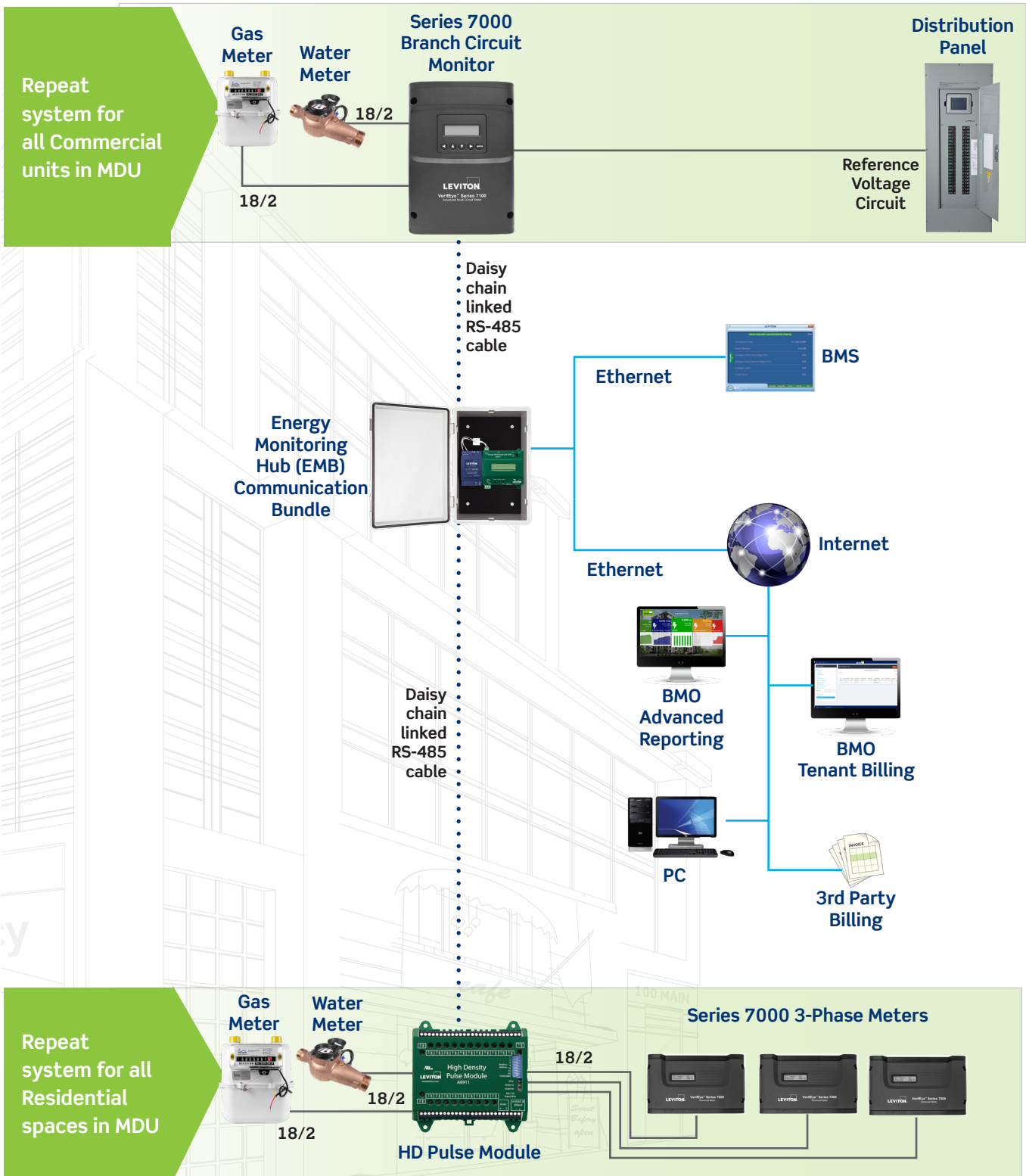




# Commercial Offices/Mixed Use

New Construction & Retrofit Applications

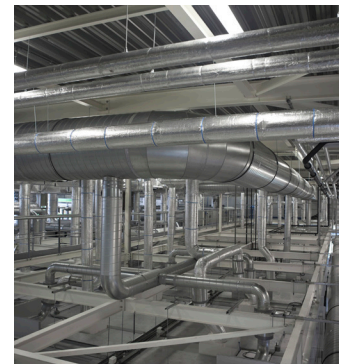
## PUTTING IT ALL TOGETHER



# CORE LEVITON COMPONENTS

Commercial Offices/Mixed Use				
Product	Voltage	Description	Amps	Cat. No.
HD Pulse Module	—	HD Pulse Module, 23 inputs	—	A8911-023
Series 7000 Meter	90-600VAC	Series 7100 Dual Voltage, Branch Circuit Monitor, 48 inputs, LCD display, NEMA 1 enclosure	—	71D48-000
Energy Monitoring Hub EMB	—	Energy Monitoring EMB Hub with line voltage power supply, NEMA 4X enclosure	—	A8810-PS1
Series 7000 3-Phase Meter	90-600VAC	Series 7100 Advanced 3-Phase Meter (NEMA 1 Wall Mount Enclosure)	—	71D03-000
BMO Tenant Billing Module Software	—	BMO Tenant Billing Module Software	—	BMOTB-050
BMO Advanced Reporting Module Software	—	BMO Energy Management Software with Advanced Reporting	—	BMOAR-050

Note: These are examples of applications but should not be considered limitations to product and solution capability. Please contact your local Leviton representative for design assistance.



# Retail Malls

## New Construction & Retrofit Applications

Billing tenants for actual, measured usage on a regular basis and taking the uncertainty out of the equation makes sense for all parties. It improves cash flow, avoids end-of-year reconciliations and, in general, places responsibility for consumption where it belongs. But VerifEye submetering is more than just a tenant billing solution. All of our meters are designed to provide granular data on usage within specific areas or by individual loads that can be used to lower long-term energy usage.

**PUTTING IT  
ALL TOGETHER**  
See pages 18-19



Submeters are a cost effective approach to tenant billing and energy management in a mall environment where space is

routinely reconfigured to accommodate tenant turnover and planned improvements. That's because it is a cost-effective option that minimizes rewiring and disruption of retail operations during typical ongoing tenants' improvements.

Leviton VerifEye submetering features a range of devices that incorporate standard protocols, wireless options and split core CT technologies, making retrofits relatively easy and inexpensive. VerifEye submeters facilitate accurate tenant billing of electric, water, gas and other utility usage — and chargebacks for common area utilities.

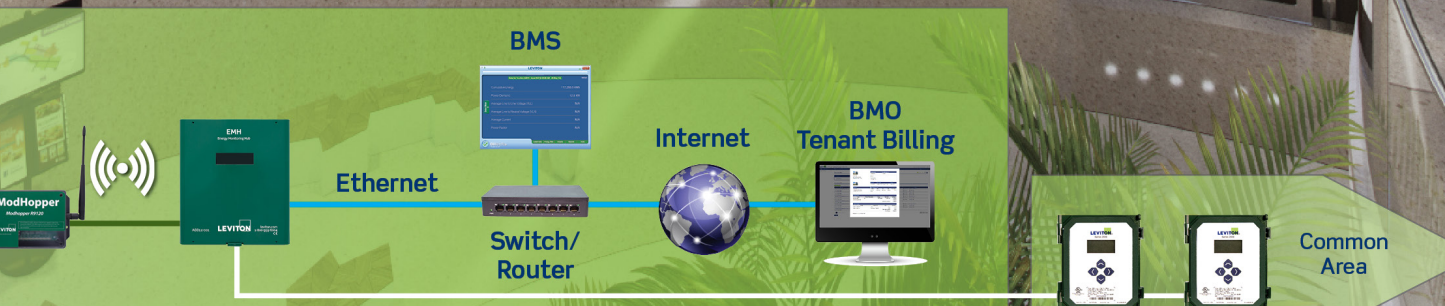
### The Leviton Advantage

- Redirect responsibility for utility usage from property owners to tenants for improved cash flow
- The VerifEye ModHopper Wireless Transceiver provides a self-optimizing wireless mesh network between multiple meters for a full submetering solution at a fraction of the traditional cost
- Eliminate the need for costly wiring with the VerifEye ModHopper Wireless Transceiver, which provides a self-optimizing wireless mesh network between multiple meters, for a full submetering solution
- Open architecture data collection offers freedom to utilize any third party billing company or VerifEye BMO Tenant Billing Module web-based software
- Integrate data and allocate costs from a variety of utilities including electric, gas, and water





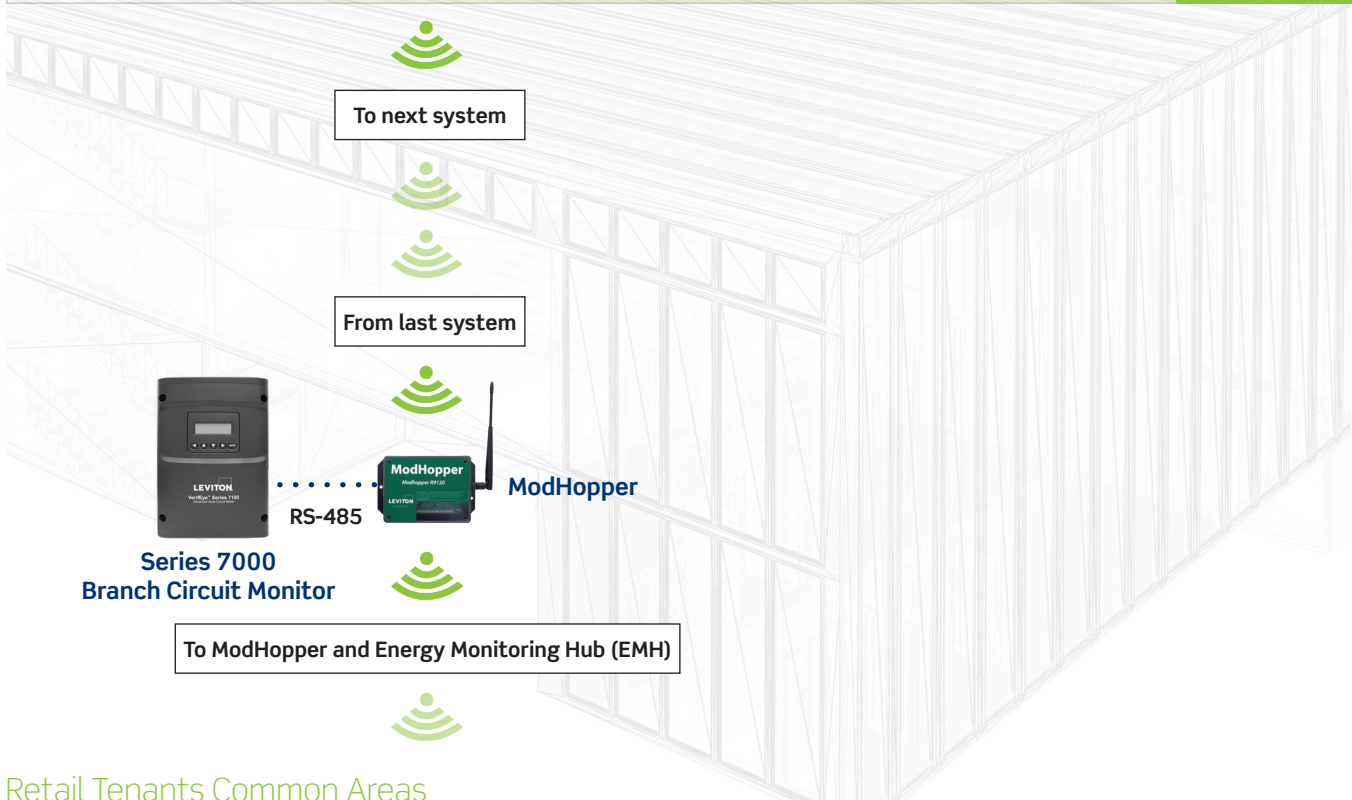
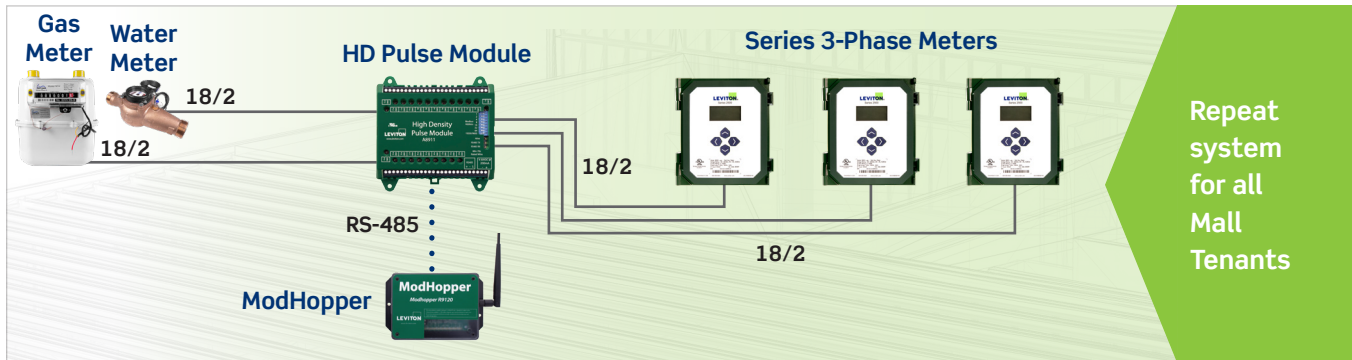
FASHION SHOP



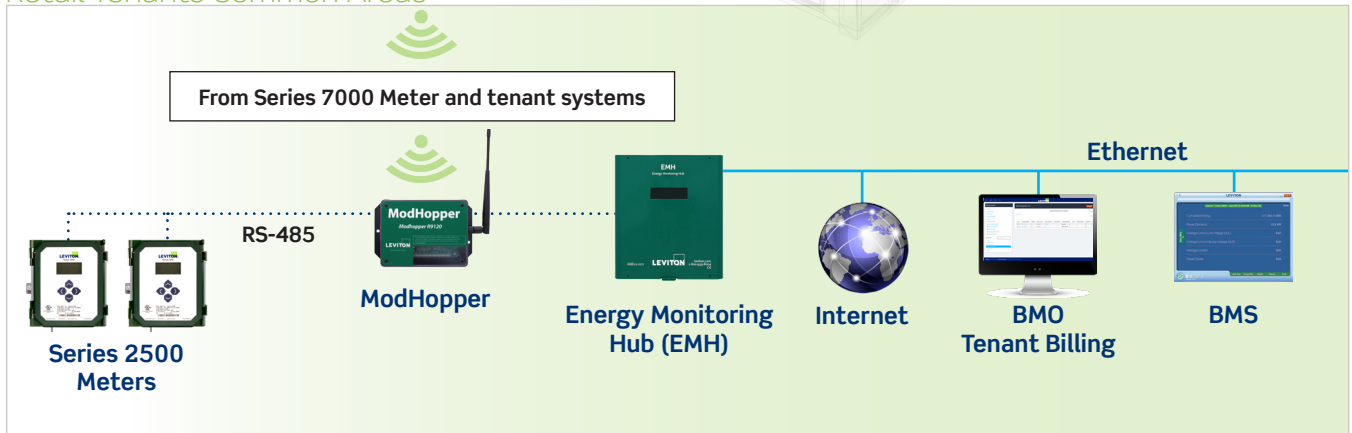
## Retail Malls

New Construction & Retrofit Applications

# PUTTING IT ALL TOGETHER



## Retail Tenants Common Areas



# CORE LEVITON COMPONENTS

Retail Malls			
Product	Voltage	Description	Cat. No.
ModHopper	—	ModHopper	R9120-500
High Density Pulse Module	—	High Density Pulse Module, 23 Inputs	A8911-023
Series 2500 Meter	120-480VAC	Series 2500 Meter	2B501-000
Series 7000 Meter	90-600VAC	Series 7100 Dual Voltage, Branch Circuit Monitor, 48 inputs, LCD display, NEMA 1 enclosure	71D48-000
Energy Monitoring Hub	—	Energy Monitoring Hub	A8812-000
BMO Tenant Billing Module Software	—	BMO Tenant Billing Module Software	BMOTB-050

Note: These are examples of applications but should not be considered limitations to product and solution capability. Please contact your local Leviton representative for design assistance.



# Educational and Professional Campuses

## New Construction & Retrofit Applications

In the face of escalating utility costs, energy metering and monitoring provides a prime opportunity for substantial savings on college campuses. Modern educational facilities have become increasingly reliant on technology to improve the learning environment. Computers at every desk, sophisticated

A/V equipment in every room, proliferation of personal mobile devices, etc.: all these devices and systems consume vast amounts of energy.

**PUTTING IT ALL TOGETHER**  
See pages 22-23

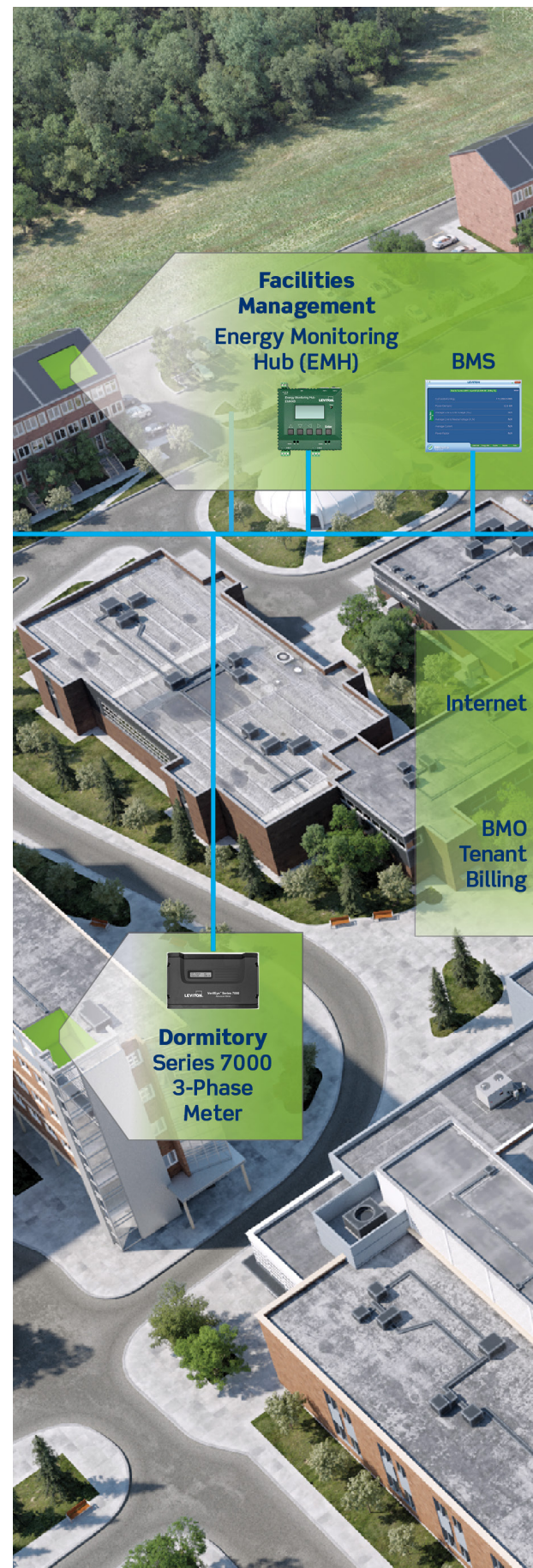


Installing a Leviton VerifEye submetering system provides visibility into downstream energy usage that can be used to improve energy efficiency and distribute costs equitably. Identifying and correcting system inefficiencies and equipment problems using data provided by submeters can result in significant savings. Submeters provide the required data for energy and facility managers to understand where to focus their time and money.

VerifEye provides the right products to allow energy submetering from the whole building down to individual branch circuits on a single platform campus wide. Collected data can be sent to multiple stakeholders including energy monitoring software, EMS/BMS, dorm competition dashboards, ESCOs, etc.

### The Leviton Advantage

- Clear visibility into downstream energy data facilitates departmental cost allocation and aids in forecasting future energy needs
- Integration of multiple utilities (electric, water, gas and steam) into single data collection platform with open protocol data access
- Broad line of metering products and communication architecture platforms to suit a wide variety of environments
- Highly scalable system can be phased in to accommodate resource constraints and ease adoption
- Cost-effective and convenient method of monitoring usage for energy savings, code compliance and LEED measurement and verification





**Lecture Hall**  
Series 7000  
Branch Circuit Monitor



**Health Sciences**  
Series 7000  
3-Phase Meter



**Data Center**  
Series 7000  
3-Phase Meter



Ethernet

**Library**  
Series 7000  
3-Phase Meter



**Faculty Hall**  
Series 7000  
3-Phase Meter



**Administration**  
Series 7000  
3-Phase Meter



**Gymnasium**  
Series 7000  
3-Phase Meter



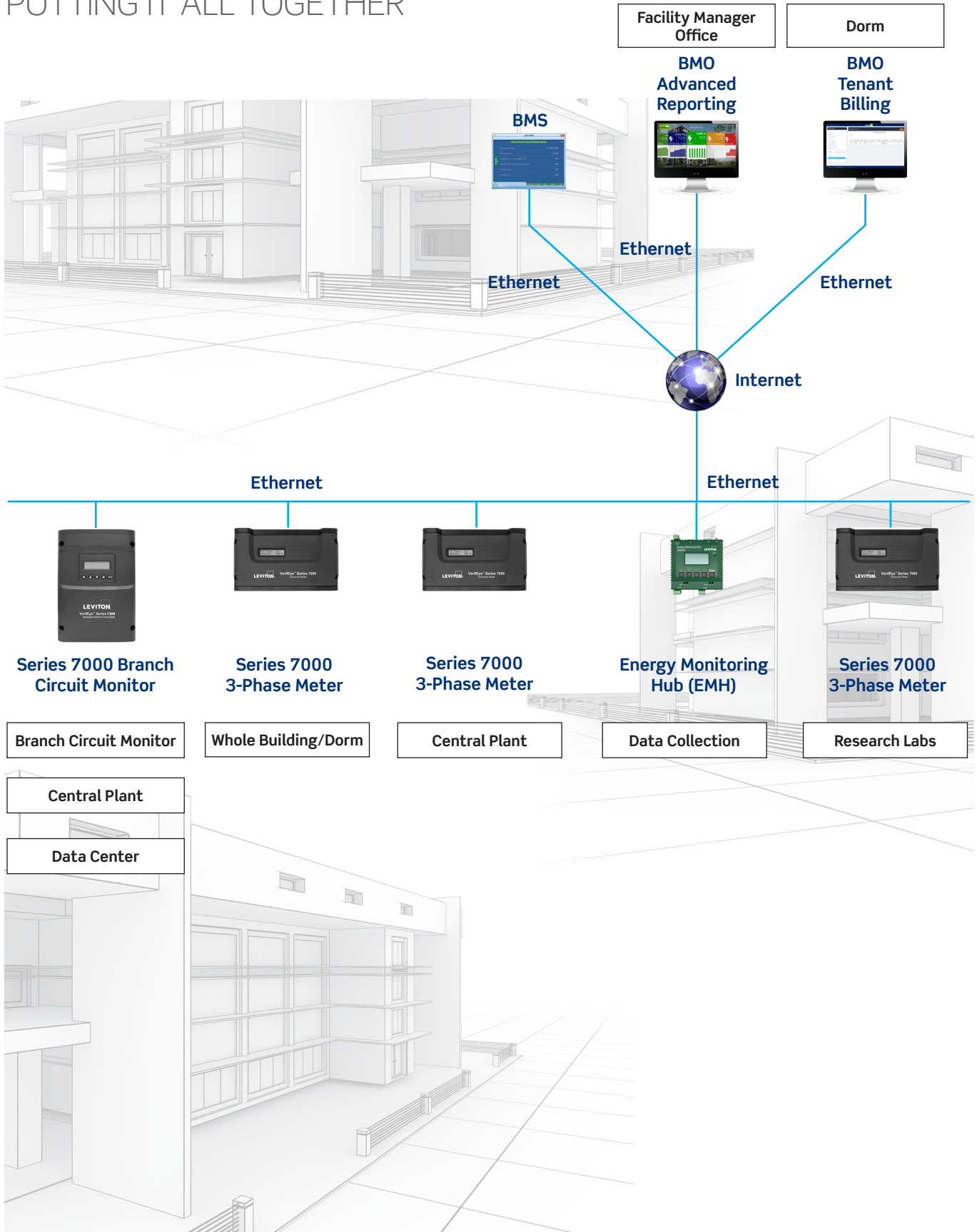
**Research Lab**  
Series 7000  
3-Phase Meter



# Educational and Professional Campuses

New Construction & Retrofit Applications

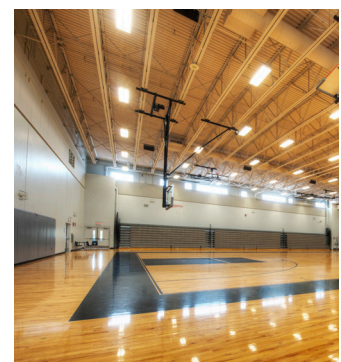
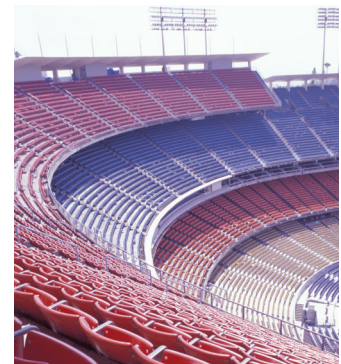
## PUTTING IT ALL TOGETHER



# CORE LEVITON COMPONENTS

<b>Educational and Professional Campuses</b>			
<b>Product</b>	<b>Voltage</b>	<b>Description</b>	<b>Cat. No.</b>
BMO Tenant Billing Module Software	—	BMO Tenant Billing Software	BMOTB-050
BMO Advanced Reporting Module Software	—	BMO Advanced Reporting Module Software	BMOAR-050
<b>Suggested Meters for Individual Buildings</b>			
<b>Low Range — Gymnasium, Faculty Hall</b>			
Series 7000 3-Phase Meter	90-600VAC	Series 7100 Advanced 3-Phase Meter (NEMA 1 Wall Mount Enclosure)	71D03-000
<b>Mid Range — Administration, Dormitory, Health Sciences, Library</b>			
Series 7000 3-Phase Meter	90-600VAC	Series 7100 Advanced 3-Phase Meter (NEMA 1 Wall Mount Enclosure)	71D03-000
<b>High Range — Data Center, Research Lab</b>			
Series 7000 3-Phase Meter	90-600VAC	Series 7100 Advanced 3-Phase Meter (NEMA 1 Wall Mount Enclosure)	71D03-000
<b>Facilities Management</b>			
Energy Monitoring Hub	—	Energy Monitoring HUB, 2 Ethernet, 2 Modbus (RS485)	EMHxD-220
<b>Lecture Hall</b>			
Series 7000 Branch Circuit Monitor	90-600VAC	Series 7100 Dual Voltage, Branch Circuit Monitor, 48 inputs, LCD display, NEMA 1 enclosure	70D48-000

Note: These are examples of applications but should not be considered limitations to product and solution capability. Please contact your local Leviton representative for design assistance.



# Industrial/ Manufacturing Plants, Major Building Systems

## New Construction & Retrofit Applications

It takes a tremendous amount of energy to run manufacturing process equipment, lighting and HVAC systems within a typical plant. As major consumers of electricity and other utilities, factories and industrial facilities can achieve significant cost savings by improving equipment performance, by load shifting, and by eliminating wasteful consumption. In addition, accurate allocation of utility costs made possible through submetering can enhance management of per-unit production costs. Energy monitoring data can facilitate a robust energy management and improvement plan that if utilized properly, will provide significant savings opportunities.

**PUTTING IT  
ALL TOGETHER**  
See pages 26-27



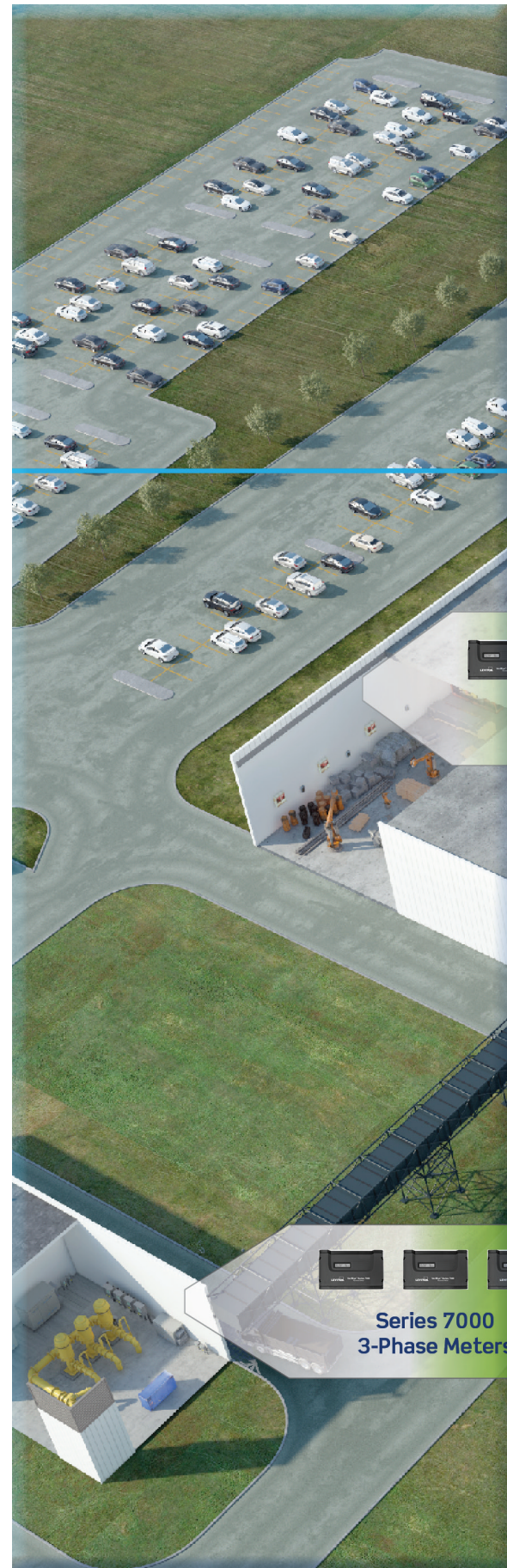
In an environment where downtime can quickly erode profits, a submetering system that can be phased in without interrupting processing or production

has measurable advantages. Leviton's VerifEye submetering system is extremely scalable so it can be installed in phases, while use of split core transformers enables installation without power interruptions. Once in action, submetering provides facility managers and operators with valuable insight into the performance of the overall facility.

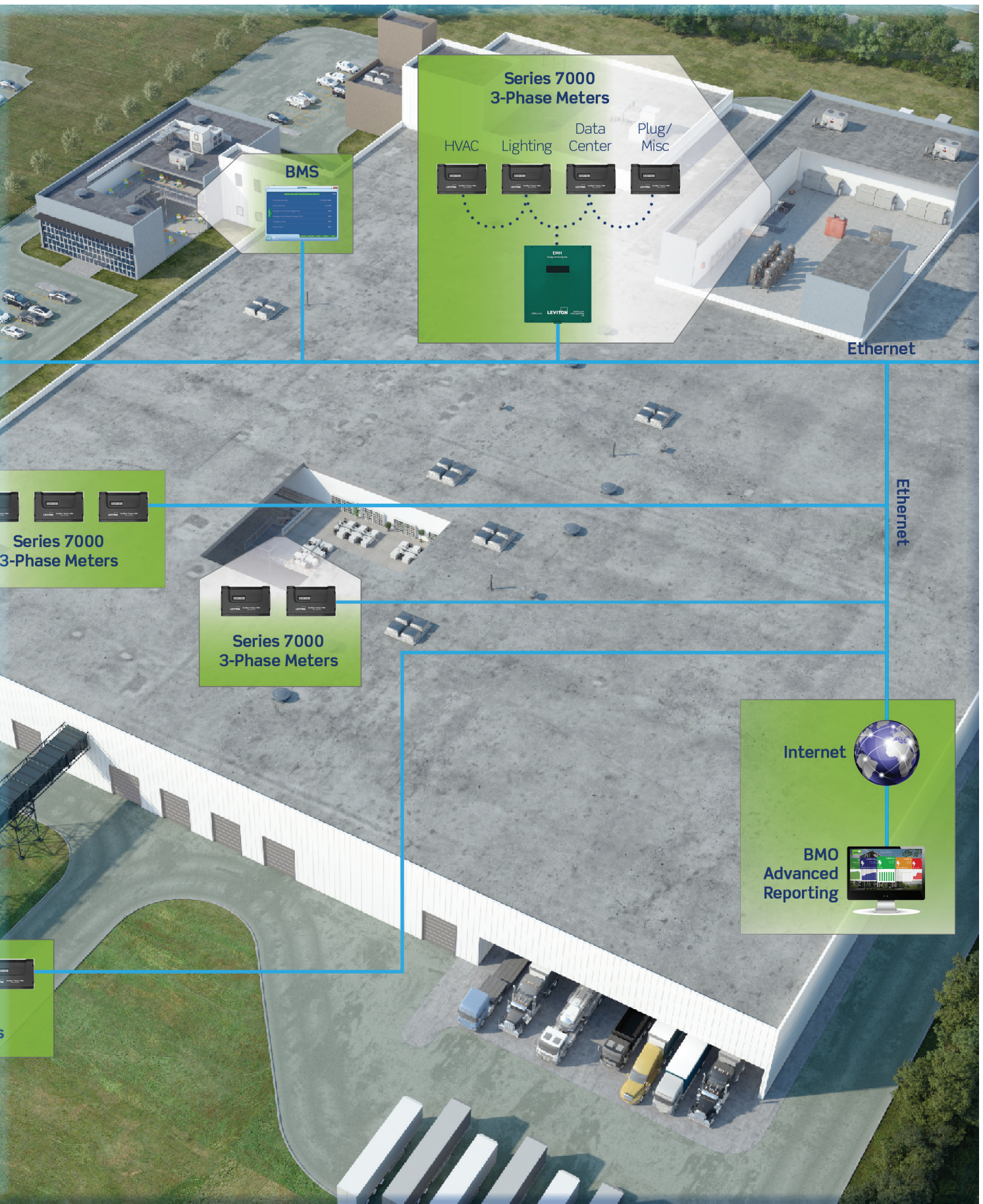
Leviton's VerifEye submetering system can help streamline demand analysis, production and administrative cost allocation, and equipment maintenance opportunities. The end result is a better bottom line.

### The Leviton Advantage

- Highly scalable system can be phased in so as not to interrupt daily operations
- Monitoring of processes, equipment and major building system loads for energy savings
- Ideal solution for departmental cost allocation
- Easy integration of utility data into building and energy management systems
- Versatile metering products accommodate split core transformers or Rogowski Coil CTs for relatively easy retrofitting into any environment



**Series 7000  
3-Phase Meters**



**Series 7000  
3-Phase Meters**

- HVAC
- Lighting
- Data Center
- Plug/Misc

**BMS**



Ethernet

Ethernet

**Series 7000  
3-Phase Meters**

**Series 7000  
3-Phase Meters**

Internet



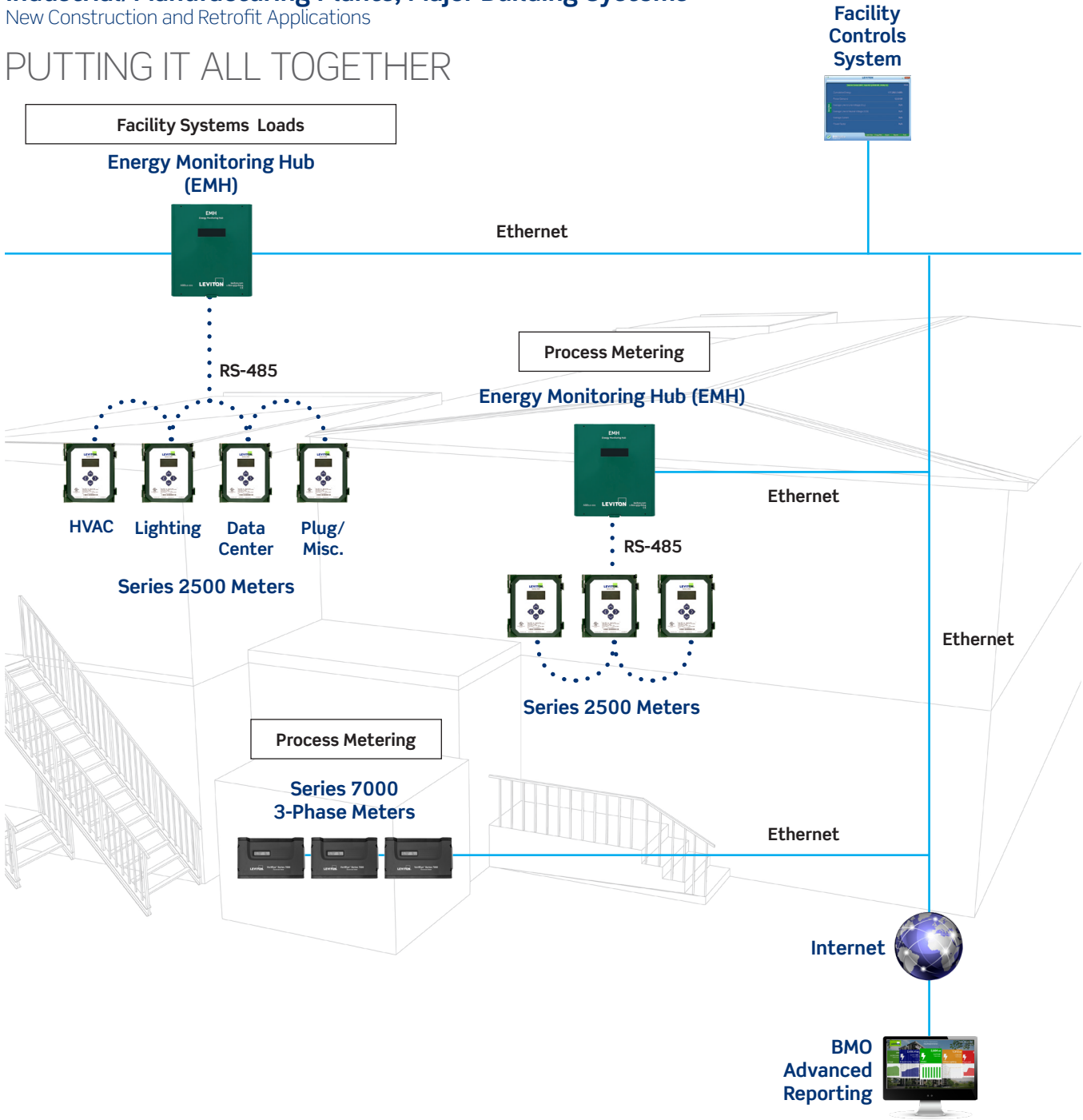
**BMO  
Advanced  
Reporting**



# Industrial/Manufacturing Plants, Major Building Systems

New Construction and Retrofit Applications

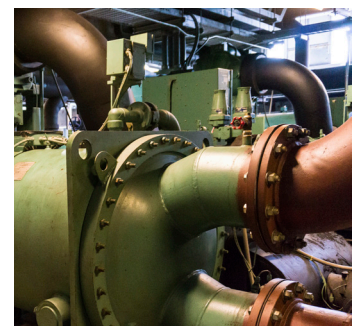
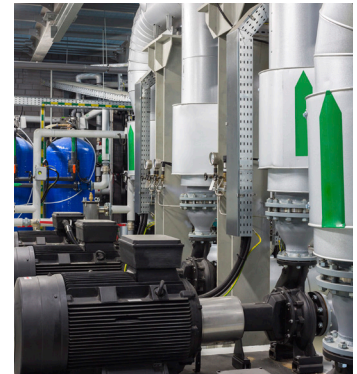
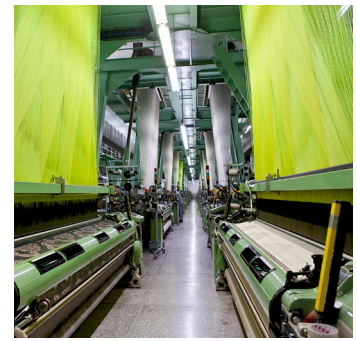
## PUTTING IT ALL TOGETHER



# CORE LEVITON COMPONENTS

Industrial/Manufacturing Plants, Major Building Systems			
Product	Voltage	Description	Cat. No.
Series 2500 3-Phase Meters	1P/2W	100A, 2 Solid Core CTs	25B01-A01
		200A, 2 Solid Core CTs	25B01-A02
	2P/3W 3P/4W	100A, 2 Split Core CTs	25B01-B01
		200A, 2 Split Core CTs	25B01-B02
		100A, 3 Solid Core CTs	25B01-D01
		200A, 3 Solid Core CTs	25B01-D02
		100A, 3 Split Core CTs	25B01-S01
		200A, 3 Split Core CTs	25B01-S02
		400A, 3 Split Core CTs	25B01-S04
800A, 3 Split Core CTs	25B01-S08		
Series 7000 3-Phase Meters	90-600VAC	Series 7100 Advanced 3-Phase Meter (NEMA 1 Wall Mount Enclosure)	71D03-000
Energy Monitoring Hub	—	Energy Monitoring Hub	A8812-000
BMO Advanced Reporting Module Software	—	BMO Energy Management Software with Advanced Reporting	BMOAR-050

Note: These are examples of applications but should not be considered limitations to product and solution capability. Please contact your local Leviton representative for design assistance.

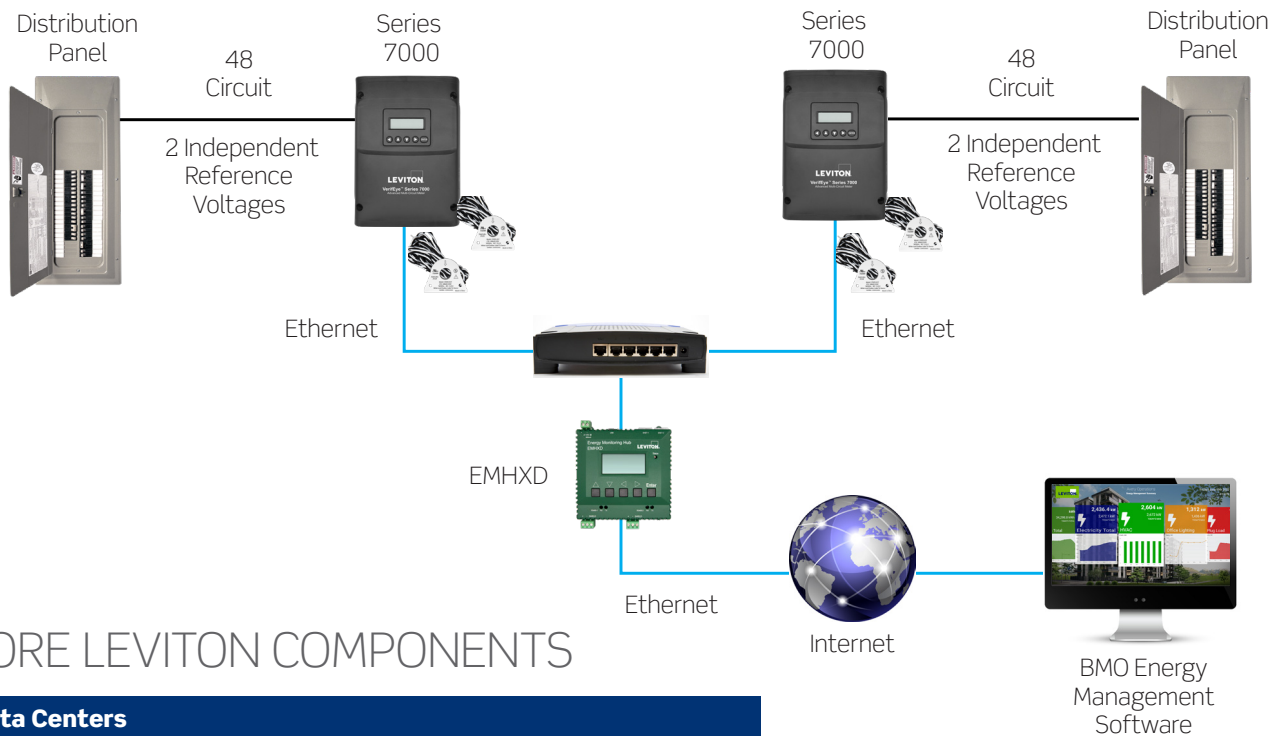


# Data Centers

## New Construction & Retrofit Applications

Strategies for precise monitoring of data center energy usage can generate substantial cost savings with VerifEye. Data center energy management requires a multi-pronged approach, as multiple factors, like the servers and temperature controls, significantly impact the energy usage of individual areas within the facility. Data centers offer a unique opportunity for active energy management to allocate costs across different areas, spot anomalies or problems and identify opportunities for energy savings.

Leviton's VerifEye submetering system offers a cost effective solution for electrical load management for data center applications. The Series 7000 monitors up to 48 branch circuits with one single meter and uses solid core or split core CTs for easy wiring without having to re-wire the building or disrupt service. Monitor server demand and individual department energy usage. VerifEye monitors real time current, voltage, instantaneous power, demand and energy consumption of each circuit and offers user-configurable alarm thresholds for improved load management.



## CORE LEVITON COMPONENTS

Data Centers		
Product	Description	Cat. No.
Series 7000 Meters	Series 7100 Branch Circuit Monitor, 48 circuits	71D48-000
	Series 7100 Branch Circuit Monitor, 24 circuits	71D24-000
	Series 7100 Branch Circuit Monitor, 12 circuits	71D12-000
	Series 7100 Advanced 3-Phase Meter	71D03-000
Current Transformers	333mV Solid Core CTs	CDVxx
	333mV Split Core CTs	CTVxx
	Rogowski Coil CTs	CRV50
Energy Monitoring Hub	Energy Monitoring Hub	EMHXD
BMO Advanced Reporting Module Software	BMO Energy Management Software with Advanced Reporting	BMOAR-050

Note: These are examples of applications but should not be considered limitations to product and solution capability. Please contact your local Leviton representative for design assistance.

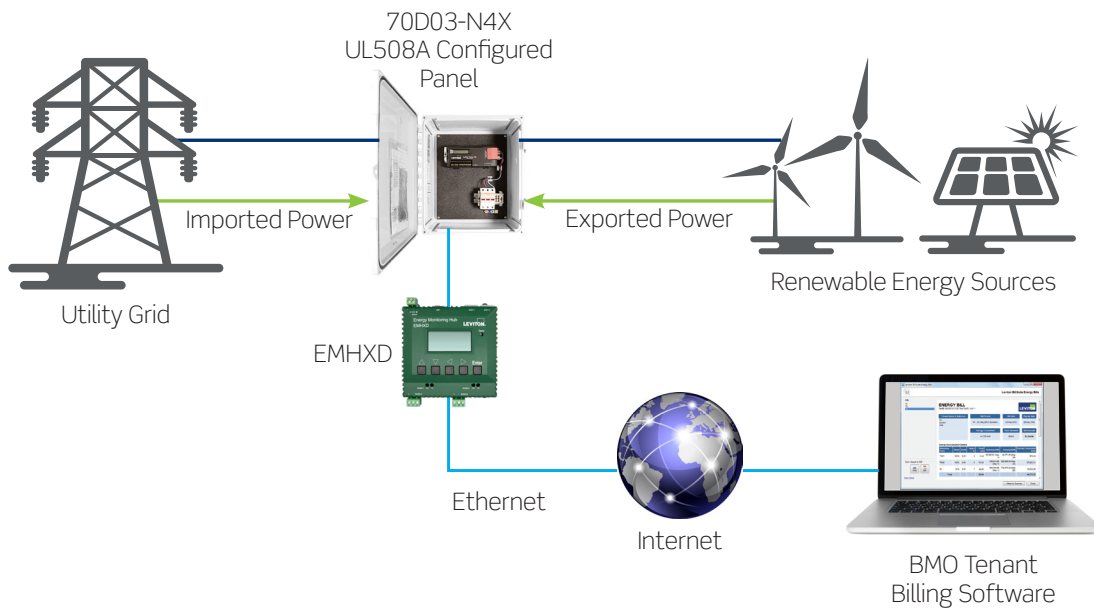
# Renewable Energy

## New Construction & Retrofit Applications

The VerifEye 70D03-N4X UL508A Configured Panel features a Series 7000 3-Phase Meter in a NEMA 4X enclosure that can withstand the elements. The Series 7000 3-Phase Meter features bidirectional monitoring specifically designed for renewable energy applications. The Series 7000 3-Phase Meters measure power imported from the utility grid and power exported from renewable energy sources such as solar panels and wind turbines. This allows facility managers to track all energy data, ensuring accuracy in billing and crediting.

A facility using renewable energy technologies may not always be able to supply all the building's power

supply needs and may create a surplus of power or little to no power depending on the season, and as a result, requires the building to be connected to the main power grid. The Series 7000 3-Phase Meter provides precise tracking of imported grid power and exported renewable energy. The meter measures electricity flow in two directions, showing how much energy has been consumed and how much clean power has been fed back to the utility grid. Verifeye BMO energy management software tracks all energy data for tenant billing and measurement and verification applications.



## CORE LEVITON COMPONENTS

Data Centers		
Product	Description	Cat. No.
UL508A Configured Panel	VerifEye 70D03, 3P Disconnect (NEMA 4X Enclosure)	70D03-N4X
Current Transformers	333mV Solid Core CTs	CDVxx
	333mV Split Core CTs	CTVxx
	Rogowski Coil CTs	CRV50
Energy Monitoring Hub	Energy Monitoring Hub	EMHXD
BMO Tenant Billing Software	BMO Energy Management Software with Tenant Billing	BMOTB-050

Note: These are examples of applications but should not be considered limitations to product and solution capability. Please contact your local Leviton representative for design assistance.

# EVSE Infrastructure

## New Construction & Retrofit Applications

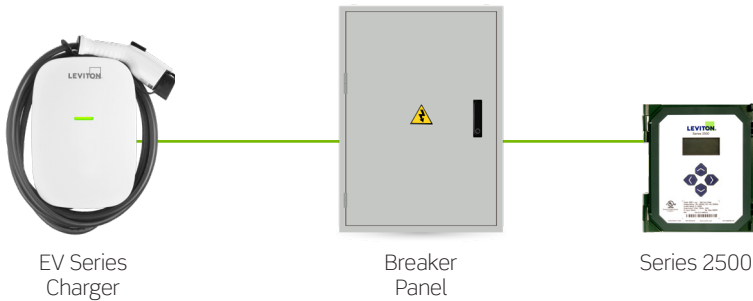
Electric vehicle adoption is on the rise, and with it comes the need for more electric vehicle supply equipment (EVSE). Stakeholders need to ensure that they have a proper infrastructure in place to handle additional electrical load requirements and manage the increase in electricity costs.

This growth presents an opportunity for specifiers, building owners, and property managers to get the most out of an EV charging station by incorporating submetering for all data acquisition and billing purposes.

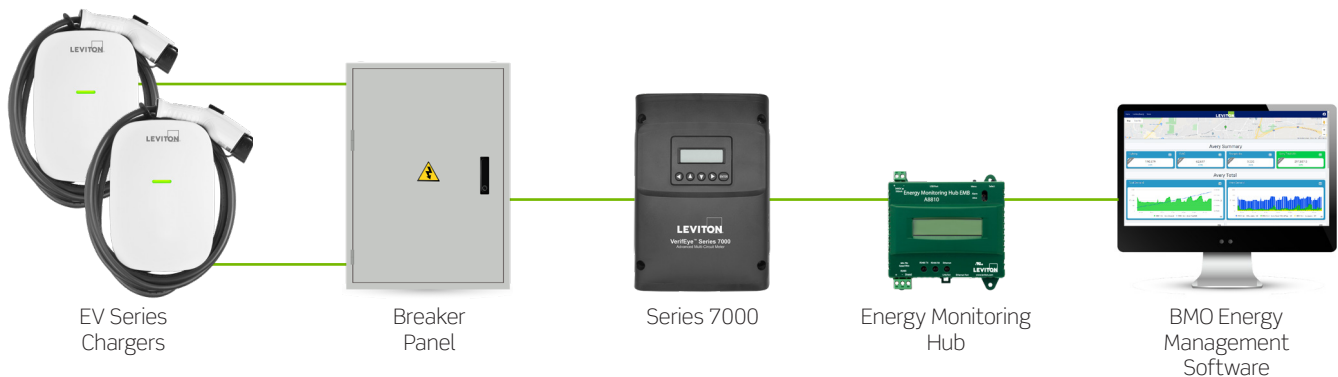
VerifEye provides visibility to EVSE energy usage and costs.

- Measures how much electricity is being used by EVSE to gain insight into the needs and demands of EV users and help optimize the charging infrastructure
- Ensures accurate and tracking of energy usage and billing for EVSE
- Shifts the burden of cost from building owners to EVSE users
- Tracks kWh consumption and establish baseline for charging station's energy usage and cost

### EVSE KWH READINGS ONLY



### EVSE TENANT BILLING AND ENERGY MONITORING



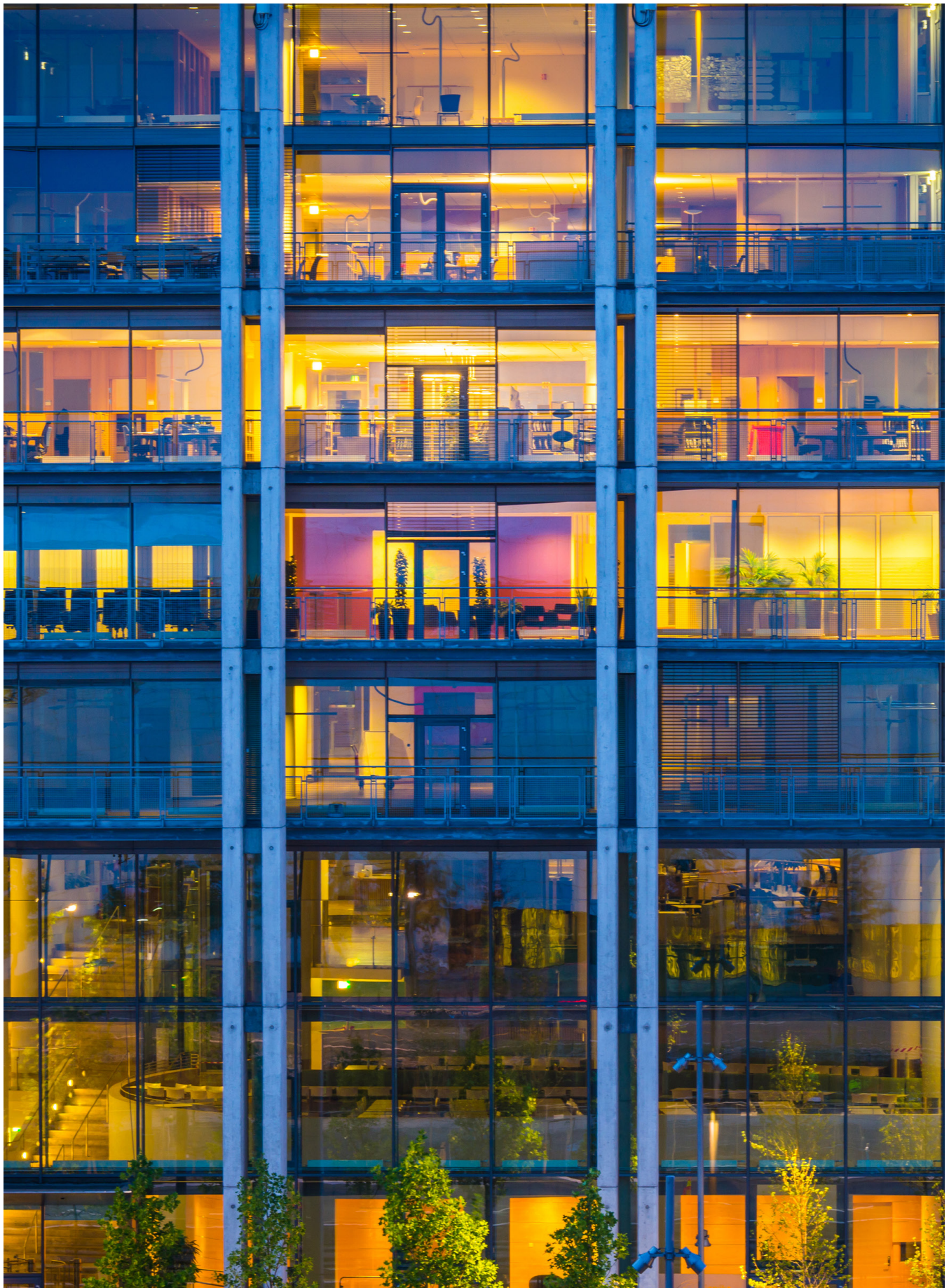
## CORE LEVITON COMPONENTS

EVSE Kwh Readings Only		
Product	Description	Cat. No.
Series 2500	Series 2500 Meters	2B501-xxx
Current Transformers	333mV Solid Core CTs	CDVxx
	333mV Split Core CTs	CTVxx
	Rogowski Coil CTs	CRV50

EV Charging & Surge protection Solutions		
Product	Description	Cat. No.
EV Series	EV Series Standard	EV320 EV480 EV800
B Series	Type 2 Surge Protective Panel	Bxxxx

EVSE Tenant Billing and Energy Monitoring		
Product	Description	Cat. No.
Series 7000	Series 7000 Meters	7xxxx-000
Current Transformers	333mV Solid Core CTs	CDVxx
	333mV Split Core CTs	CTVxx
	Rogowski Coil CTs	CRV50
Energy Monitoring Hub	Energy Monitoring Hub	EMHXD
BMO Energy Management Software	BMO Energy Management Software - Basic Module	BMOBM-050

Note: These are examples of applications but should not be considered limitations to product and solution capability. Please contact your local Leviton representative for design assistance.



Find Quality Products Online at:

[www.GlobalTestSupply.com](http://www.GlobalTestSupply.com)

[sales@GlobalTestSupply.com](mailto:sales@GlobalTestSupply.com)

## VERIFEYE METERS



Mini Meter  
MMU



Mini Meter  
Flush Mount



Mini Meter Kit  
with AMR

Multi-Family Residential		
Specifications	Mini Meter™ Kits	Mini Meter™ Kits with AMR
<b>kWh Meter</b>		
<b>Phase/Wiring</b>	1P/2W 2P/3W	1P/2W 2P/3W
<b>Voltage Configurations</b>	120/208/240	120/208/240
<b>Amperages</b>	100-200A	200A
<b>Measuring Parameters</b>	kWh	kWh
<b>Communications Protocol (Standard)</b>	Isolated Pulse Output	Embedded Wireless Transmitter
<b>Current Transformers Options</b>	Split Core Solid Core	Solid Core
<b>Enclosure Options</b>	<b>OEM Module</b> <b>Indoor</b> Plastic Flush Mount NEMA 1 <b>Outdoor</b> NEMA 4X <b>MMU</b> NEMA 4X	<b>Indoor</b> Flush Mount or Surface Mount
<b>Display Type</b>	LCD	LCD
<b>Accuracy</b>	C12.10 +/- 0.5% with solid core CTs	C12.20 / 0.5% with solid core CTs
<b>Multiple Meter Unit (MMU) Configurations</b>	Medium: 2-4 Meters Large: 5-8 Meters Extra Large: 9-20 Meters	—
<b>Data Storage</b>	Last Reading - Cumulative	Last Reading - Cumulative

\* Reference Product Selection Guide and Data Sheets for complete information.



Series 8000



Series 7000  
Virtual Element Meters

Residential/Commercial	
Specifications	<b>Series 8000</b> High Density Multi-Circuit Meter <span style="float: right;"><b>Series 7000</b> Virtual Element Meters</span>
kWh Meter	
<b>Phase/Wiring</b>	1P/2W 2P/3W 3P/4W 3P/3W (Delta)
<b>Voltage Configurations</b>	120/208 120/240 277/480 480*
<b>Amperages</b>	100-5000A
<b>Measuring Parameters</b>	kWh Delivered and Received kVARh Delivered and Received VAR PF Peak Demand Present Demand Volts Amps Watts
<b>Communications Protocol (Standard)</b>	Modbus RTU Modbus TCP BACnet IP
<b>Current Transformers Options</b>	Split Core Solid Core
<b>Enclosure Options</b>	<b>Indoor</b> JIC Steel NEMA 1
<b>Display Type</b>	Local LCD, Scroll
<b>Accuracy</b>	C12.20 +/- 0.5% with solid core CTs
<b>Multiple Meter Unit (MMU) Configurations</b>	3PH: 4x3 1PH 3W: 12x2, 9x2, 6x2, 3x2 1PH: 12x1
<b>Data Storage</b>	Last Reading - Cumulative Data in 15 min Intervals

## VERIFEYE METERS



	Commercial		Industrial
Specifications	Series 7000 Advanced Branch Circuit Monitor and Advanced 3-Phase Meters	Series 2500 Three-Phase Meter Kits	Series 6000 Industrial Panel Mount Meter
	kWh Meter with Demand		Advanced kWh Meter with Communication
Phase/Wiring	1P/2W 2P/3W 3P/4W 3P/3W (Delta)	1P/2W 2P/3W 3P/4W	1P/2W 2P/3W 3P/4W 3P/3W (Delta)
Voltage Configurations	90-347 Volts AC Line-to-Neutral 600V Line-to-Line	120/208 277/480	50-300V L-N 87-520V L-L
Amperages	50-4000A	100-800A	Split Core: 0.5A-720A Rogowski: 12-7200A
Measuring Parameters	Volts, Amps, kW, kVAR, kVA, aPF, dPF, kW demand, kVA demand, Import (Received), kWh, Export (Delivered), kWh, Net kWh, Import (Received) kVAh, Export (Delivered) kVAh, Net KVAh, Import (Received), kVARh, Export (Delivered), kVARh, Net kVARh, THD Theta, Frequency	kWh kW Volts Amps aPF	kWh, kVARh, kVAh Powers: P1, P2, P3, P, Q1, Q2, Q3, Q, S1, S2, S3, $\Sigma S$ Predictive powers: $\Sigma P$ , $\Sigma Q$ , $\Sigma S$ Power factor: PF1, PF2, PF3, $\Sigma PF$ , Cos $\phi$ & tangent $\phi$
Communications Protocol (Standard)	Modbus RTU Modbus TCP BACnet MS/TP BACnet IP  Integrated USB port may be used for local configuration	Isolated Pulse Output Modbus RTU	Modbus RTU BACnet IP
Current Transformers Options	Split Core Solid Core Rogowski Coil	Split Core Solid Core	Split Core Rogowski Coil
Enclosure Options	<b>Indoor</b> Plastic NEMA 1 or Panel Mount with no enclosure <b>Outdoor</b> UL508A and NEMA 4X Enclosures	NEMA 3R	Panel Mount with NEMA 4X Enclosure
Display Type	Local LCD, Scroll Buttons	LCD, 4-button interface	LCD, 10-button touch screen interface
Accuracy	Class 0.2% accuracy	Class 0.2% accuracy	Class 0.2% accuracy
Multiple Meter Unit (MMU) Configurations	<b>Single 3-Phase Meters:</b> 3PH, 2PH, 1PH: x1 <b>12 Inputs Configurable:</b> 3PH: 4x3, 2PH: 4x2, 1PH: 12x1 <b>24 Inputs Configurable:</b> 3PH: 8x3 / 2PH 8x2, 1PH: 24x1 <b>48 Inputs Configurable:</b> 3PH: 16x3 / 2PH: 16x2, 1PH: 48x1	—	—
Data Storage	Last Reading - User Selectable	Last Reading	12 User Selectable Data Points - 1 Year

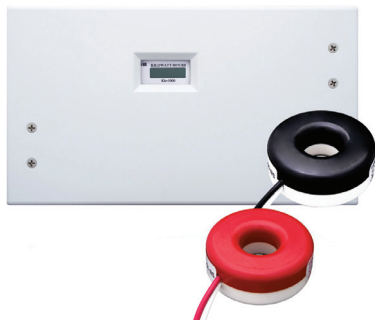


## MINI METER™ KITS

### EQUITABLE TENANT BILLING

Some multi-tenant residential properties include energy costs in rental fees and generally charge tenants for energy based on the square footage occupied. To be truly equitable, tenants should pay only for what they actually use. With Leviton Mini Meters, building managers can easily track and allocate energy usage costs fairly to multiple tenants, as well as recoup energy expenses from common-use areas (parking lots, hall lighting, etc.). Tenants benefit by paying only for the energy they use; and when they focus on conserving energy, they can see direct financial benefits from their efforts.

- kWh Meter
- 120/208V 1PH/3W and Split Phase 120/240V
- 100-200 Amps
- Pulse Output - standard feature
- Available in indoor flush mount and surface mount enclosures and NEMA 4X outdoor individual meter enclosures
- Select surface mount and flush mount models include built in tamper proof switch or built in wireless AMR and temperature sensing capabilities
- Revenue grade accuracy: 0.5% accuracy class
- Use with solid core CTs to achieve 0.5% accuracy — also available with split core CTs
- Up to three sets of CTs per phase can be paralleled per meter with no multipliers
- Components of Mini Meter Kits are UL/cUL Listed Energy Usage Monitor per CCN FTRZ



Indoor Flush Mount  
Mini Meter



Indoor Surface Mount  
Mini Meter



Mini Meter Kit



Mini Meter with  
Transceiver

## MINI METER KITS

Note: Kits include meter, specified enclosure and required current transformers

### MINI METER KITS - INDOOR FLUSH MOUNT ENCLOSURE

VOLTAGE	AMPS	CTS INCLUDED	CAT. NO.
120/208V 3W or 120/240V 1PH 3W (Split Phase)	100A	2 SOLID CTs	MK240-1SW
120/208/240V 1PH 3W	200A		MK240-2SW

### MINI METER KITS - INDOOR SURFACE MOUNT ENCLOSURE

VOLTAGE	AMPS	CTS INCLUDED	CAT. NO.
120/240 1PH/3W Split Phase, 120/208 2PH/3W	200A	2 SOLID CTs	6PSMT-C02

### MINI METER KITS - LCD MODEL METER (NO ENCLOSURE)

VOLTAGE	AMPS	CTS INCLUDED	CAT. NO.
<b>DUAL ELEMENT MINI METER</b>			
120/240 1PH/3W Split Phase, 120/208 2PH/3W 0.1kWh	100A	2 Solid CTs	MDNCT-1SC
	100A	2 Split CTs	MDNCT-1SP
	200A	2 Solid CTs	MDNCT-2SC
	200A	2 Split CTs	MDNCT-2SP
120/240 1PH/3W Split Phase, 120/208 2PH/3W 1kWh	100A	2 Solid CTs	MDTCT-1SC
	100A	2 Split CTs	MDTCT-1SP
	200A	2 Solid CTs	MDTCT-2SC
	200A	2 Split CTs	MDTCT-2SP

**NOTE:** All kits include meter and Current Transformers (CTs)

### DUAL ELEMENT MINI METER KITS - WITH INTEGRATED WIRELESS AMR\*

VOLTAGE	AMPS	CTS INCLUDED	CAT. NO.
<b>DUAL ELEMENT MINI METER</b>			
Flush Mount 120/240 1PH/3W Split Phase, 120/208 2PH/3W (includes Time of Use (TOU**) enabled kWh Wireless AMR Transceiver)	200A	2 Solid CTs	MDTFW-2SC
Surface Mount 120/240 1PH/3W Split Phase, 120/208 2PH/3W (includes Time of Use (TOU**) enabled kWh Wireless AMR Transceiver)	200A	2 Solid CTs	MDTSW-2SC

**NOTE:** All kits include meter, specified enclosure and Current Transformers (CTs).

\*For a complete wireless Automatic Meter Reading (AMR) system, data transceivers and other wireless network components (DCAPs and Repeaters) are required as dictated by building construction.

\*\*TOU = Time of Use, providing 15-minute time-stamped kWh interval data

## MINI METER MULTIPLE METER UNITS (MMU)

### MINI METER MMU BASIC METERS—WITH TERMINALS ONLY

DESCRIPTION	CAT. NO.
Mini Meter MMU - Medium Enclosure, 2 Meters with Terminals Only	MMT02-2T0
Mini Meter MMU - Medium Enclosure, 3 Meters with Terminals Only	MMT03-2T0
Mini Meter MMU - Medium Enclosure, 4 Meters with Terminals Only	MMT04-2T0
Mini Meter MMU - Large Enclosure, 5 Meters with Terminals Only	MLT05-2T0
Mini Meter MMU - Large Enclosure, 6 Meters with Terminals Only	MLT06-2T0
Mini Meter MMU - Large Enclosure, 7 Meters with Terminals Only	MLT07-2T0
Mini Meter MMU - Large Enclosure, 8 Meters with Terminals Only	MLT08-2T0
Mini Meter MMU - XL Enclosure, 9 Meters with Terminals Only	MXT09-2T0
Mini Meter MMU - XL Enclosure, 10 Meters with Terminals Only	MXT10-2T0
Mini Meter MMU - XL Enclosure, 11 Meters with Terminals Only	MXT11-2T0
Mini Meter MMU - XL Enclosure, 12 Meters with Terminals Only	MXT12-2T0
Mini Meter MMU - XL Enclosure, 13 Meters with Terminals Only	MXT13-2T0
Mini Meter MMU - XL Enclosure, 14 Meters with Terminals Only	MXT14-2T0
Mini Meter MMU - XL Enclosure, 15 Meters with Terminals Only	MXT15-2T0
Mini Meter MMU - XL Enclosure, 16 Meters with Terminals Only	MXT16-2T0
Mini Meter MMU - XL Enclosure, 17 Meters with Terminals Only	MXT17-2T0
Mini Meter MMU - XL Enclosure, 18 Meters with Terminals Only	MXT18-2T0
Mini Meter MMU - XL Enclosure, 19 Meters with Terminals Only	MXT19-2T0
Mini Meter MMU - XL Enclosure, 20 Meters with Terminals Only	MXT20-2T0



Medium Enclosure



Large Enclosure



Extra Large Enclosure

### MINI METER MMU— WITH INTEGRATED HIGH DENSITY PULSE MODULE (HDPM)

DESCRIPTION	CAT. NO.
Mini Meter MMU - Medium Enclosure, 2 Meters with Integrated HDPM	MMT02-2H0
Mini Meter MMU - Medium Enclosure, 3 Meters with Integrated HDPM	MMT03-2H0
Mini Meter MMU - Medium Enclosure, 4 Meters with Integrated HDPM	MMT04-2H0
Mini Meter MMU - Large Enclosure, 5 Meters with Integrated HDPM	MLT05-2H0
Mini Meter MMU - Large Enclosure, 6 Meters with Integrated HDPM	MLT06-2H0
Mini Meter MMU - Large Enclosure, 7 Meters with Integrated HDPM	MLT07-2H0
Mini Meter MMU - Large Enclosure, 8 Meters with Integrated HDPM	MLT08-2H0
Mini Meter MMU - XL Enclosure, 9 Meters with Integrated HDPM	MXT09-2H0
Mini Meter MMU - XL Enclosure, 10 Meters with Integrated HDPM	MXT10-2H0
Mini Meter MMU - XL Enclosure, 11 Meters with Integrated HDPM	MXT11-2H0
Mini Meter MMU - XL Enclosure, 12 Meters with Integrated HDPM	MXT12-2H0
Mini Meter MMU - XL Enclosure, 13 Meters with Integrated HDPM	MXT13-2H0
Mini Meter MMU - XL Enclosure, 14 Meters with Integrated HDPM	MXT14-2H0
Mini Meter MMU - XL Enclosure, 15 Meters with Integrated HDPM	MXT15-2H0
Mini Meter MMU - XL Enclosure, 16 Meters with Integrated HDPM	MXT16-2H0
Mini Meter MMU - XL Enclosure, 17 Meters with Integrated HDPM	MXT17-2H0
Mini Meter MMU - XL Enclosure, 18 Meters with Integrated HDPM	MXT18-2H0
Mini Meter MMU - XL Enclosure, 19 Meters with Integrated HDPM	MXT19-2H0
Mini Meter MMU - XL Enclosure, 20 Meters with Integrated HDPM	MXT20-2H0

## MINI METER MULTIPLE METER UNITS (MMU)

MINI METER MMU— WITH INTEGRATED HIGH DENSITY PULSE MODULE (HDPM) + MODHOPPER (MH) WIRELESS TRANSCEIVER

DESCRIPTION	CAT. NO.
Mini Meter MMU - Large Enclosure, 5 Meters with Integrated HDPM+MH	MLT05-2W0
Mini Meter MMU - Large Enclosure, 6 Meters with Integrated HDPM+MH	MLT06-2W0
Mini Meter MMU - Large Enclosure, 7 Meters with Integrated HDPM+MH	MLT07-2W0
Mini Meter MMU - Large Enclosure, 8 Meters with Integrated HDPM+MH	MLT08-2W0
Mini Meter MMU - XL Enclosure, 9 Meters with Integrated HDPM+MH	MXT09-2W0
Mini Meter MMU - XL Enclosure, 10 Meters with Integrated HDPM+MH	MXT10-2W0
Mini Meter MMU - XL Enclosure, 11 Meters with Integrated HDPM+MH	MXT11-2W0
Mini Meter MMU - XL Enclosure, 12 Meters with Integrated HDPM+MH	MXT12-2W0
Mini Meter MMU - XL Enclosure, 13 Meters with Integrated HDPM+MH	MXT13-2W0
Mini Meter MMU - XL Enclosure, 14 Meters with Integrated HDPM+MH	MXT14-2W0
Mini Meter MMU - XL Enclosure, 15 Meters with Integrated HDPM+MH	MXT15-2W0
Mini Meter MMU - XL Enclosure, 16 Meters with Integrated HDPM+MH	MXT16-2W0
Mini Meter MMU - XL Enclosure, 17 Meters with Integrated HDPM+MH	MXT17-2W0
Mini Meter MMU - XL Enclosure, 18 Meters with Integrated HDPM+MH	MXT18-2W0
Mini Meter MMU - XL Enclosure, 19 Meters with Integrated HDPM+MH	MXT19-2W0
Mini Meter MMU - XL Enclosure, 20 Meters with Integrated HDPM+MH	MXT20-2W0

MINI METER MMU— WITH INTEGRATED HIGH DENSITY PULSE MODULE (HDPM) + DATA ACQUISITION SERVER (DAS)

DESCRIPTION	CAT. NO.
Mini Meter MMU - Medium Enclosure, 2 Meters with Integrated A7810 DAS with pulse inputs	MMT02-20A
Mini Meter MMU - Medium Enclosure, 3 Meters with Integrated A7810 DAS with pulse inputs	MMT03-20A
Mini Meter MMU - Medium Enclosure, 4 Meters with Integrated A7810 DAS with pulse inputs	MMT04-20A
Mini Meter MMU - Large Enclosure, 5 Meters with Integrated HDPM+ A8810 DAS	MLT05-2HB
Mini Meter MMU - Large Enclosure, 6 Meters with Integrated HDPM+ A8810 DAS	MLT06-2HB
Mini Meter MMU - Large Enclosure, 7 Meters with Integrated HDPM+ A8810 DAS	MLT07-2HB
Mini Meter MMU - Large Enclosure, 8 Meters with Integrated HDPM+ A8810 DAS	MLT08-2HB
Mini Meter MMU - XL Enclosure, 9 Meters with Integrated HDPM+ A8810 DAS	MXT09-2HB
Mini Meter MMU - XL Enclosure, 10 Meters with Integrated HDPM+ A8810 DAS	MXT10-2HB
Mini Meter MMU - XL Enclosure, 11 Meters with Integrated HDPM+ A8810 DAS	MXT11-2HB
Mini Meter MMU - XL Enclosure, 12 Meters with Integrated HDPM+ A8810 DAS	MXT12-2HB
Mini Meter MMU - XL Enclosure, 13 Meters with Integrated HDPM+ A8810 DAS	MXT13-2HB
Mini Meter MMU - XL Enclosure, 14 Meters with Integrated HDPM+ A8810 DAS	MXT14-2HB
Mini Meter MMU - XL Enclosure, 15 Meters with Integrated HDPM+ A8810 DAS	MXT15-2HB
Mini Meter MMU - XL Enclosure, 16 Meters with Integrated HDPM+ A8810 DAS	MXT16-2HB
Mini Meter MMU - XL Enclosure, 17 Meters with Integrated HDPM+ A8810 DAS	MXT17-2HB
Mini Meter MMU - XL Enclosure, 18 Meters with Integrated HDPM+ A8810 DAS	MXT18-2HB
Mini Meter MMU - XL Enclosure, 19 Meters with Integrated HDPM+ A8810 DAS	MXT19-2HB
Mini Meter MMU - XL Enclosure, 20 Meters with Integrated HDPM+ A8810 DAS	MXT20-2HB

## MINI METER MULTIPLE METER UNITS (MMU)

MINI METER MMU— WITH INTEGRATED HIGH DENSITY PULSE MODULE (HDPM) + DATA ACQUISITION SERVER (DAS) +

DESCRIPTION	CAT. NO.
Mini Meter MMU - Large Enclosure, 5 Meters with Integrated HDPM+A8810 DAS+MH	MLT05-2WB
Mini Meter MMU - Large Enclosure, 6 Meters with Integrated HDPM+A8810 DAS+MH	MLT06-2WB
Mini Meter MMU - Large Enclosure, 7 Meters with Integrated HDPM+A8810 DAS+MH	MLT07-2WB
Mini Meter MMU - Large Enclosure, 8 Meters with Integrated HDPM+A8810 DAS+MH	MLT08-2WB
Mini Meter MMU - XL Enclosure, 9 Meters with Integrated HDPM+A8810 DAS+MH	MXT09-2WB
Mini Meter MMU - XL Enclosure, 10 Meters with Integrated HDPM+A8810 DAS+MH	MXT10-2WB
Mini Meter MMU - XL Enclosure, 11 Meters with Integrated HDPM+A8810 DAS+MH	MXT11-2WB
Mini Meter MMU - XL Enclosure, 12 Meters with Integrated HDPM+A8810 DAS+MH	MXT12-2WB
Mini Meter MMU - XL Enclosure, 13 Meters with Integrated HDPM+A8810 DAS+MH	MXT13-2WB
Mini Meter MMU - XL Enclosure, 14 Meters with Integrated HDPM+A8810 DAS+MH	MXT14-2WB
Mini Meter MMU - XL Enclosure, 15 Meters with Integrated HDPM+A8810 DAS+MH	MXT15-2WB
Mini Meter MMU - XL Enclosure, 16 Meters with Integrated HDPM+A8810 DAS+MH	MXT16-2WB
Mini Meter MMU - XL Enclosure, 17 Meters with Integrated HDPM+A8810 DAS+MH	MXT17-2WB
Mini Meter MMU - XL Enclosure, 18 Meters with Integrated HDPM+A8810 DAS+MH	MXT18-2WB
Mini Meter MMU - XL Enclosure, 19 Meters with Integrated HDPM+A8810 DAS+MH	MXT19-2WB
Mini Meter MMU - XL Enclosure, 20 Meters with Integrated HDPM+A8810 DAS+MH	MXT20-2WB



MLT08-2WB

## SERIES 8000 MULTI-POINT HIGH DENSITY METERS

For both retrofit and new construction, Leviton VerifEye Multiple Meter Units (MMUs) are fast and easy to install. These units come in 3 standard sizes with options for integrated High Density Pulse Modules, ModHopper wireless transceivers, and even a data acquisition server. They are assembled in NEMA 4X enclosures with clear covers, allowing the meters to be read through the front panel.

- Allows for revenue grade metering of up to 24 individual circuits in one device
- Monitors up to 24 current transformers:
  - 8 circuits, 3 phase loads
  - 12 circuits, 2 phase loads
  - 24 circuits, 1 phase loads
- 100-5,000 Amp current transformers
- Native communications protocol—Modbus TCP, Modbus RTU (RS-485) and BACnet IP standard
- Measures kW hours, kW demand, volts, amps
- Interval and net metering
- Two onboard pulse channels available for co-located meters with contact closures
- This platform is both CA Type and NYPSC Approved



Series 8000 Meter

## SERIES 8000 MULTI-POINT HIGH DENSITY METERS

### MULTI-FAMILY RESIDENTIAL

VOLTAGE	DESCRIPTION	CAT. NO.
120/208/240V	Phase Config 4x3 Meters with Wiring Harness (3 CTs ea)*	S8112-C04
	Phase Config 6x2 Meters with Wiring Harness (2 CTs ea)*	S8112-C06
	Phase Config 12x1 Meters with Wiring Harness (1 CT ea)*	S8112-C12
	Phase Config 8x3 Meters with Wiring Harness (3 CTs ea)*	S8124-C08
	Phase Config 2x2 Meters with Wiring Harness (2 CTs ea)*	S8124-C12
	Phase Config 24x 1 Meters with Wiring Harness (1 CT ea)*	S8124-C24
120/208/240V	8x3, 12x2, 24x1 with Terminal Strips	S8UTS-241

### COMMERCIAL & INDUSTRIAL

277/480V	Phase Config with 8x3, 12x2, 24x1 with Terminal Strips	S277TS-241
	Phase Config 8x3 with Wiring Harness	277WH-241
	Phase Config with 8x3, 12x2, 24x1 with Wiring Harness	

\*Approved for California Weights & Measures

## SERIES 7000 ADVANCED BRANCH CIRCUIT MONITORS

The VeriEye Series 7000 Advanced Branch Circuit Monitors are cost-effective solutions for electrical load management. The Series 7000 platform is ideal for high density, branch circuit monitoring applications in both new construction and retrofit applications. The Series 7000 monitors up to 48 branch circuits with one single meter board.

- 24/48 Unit versions configurable as follows:
  - 24/48 Single Pole Meters -or-
  - 8/16 Two Pole Meters -or-
  - 8/16 Three Pole Meters
- 12 Input versions configurable as follows:
  - 12 Single Pole Meters -or-
  - 4 Two Pole Meters -or-
  - 4 Three Pole Meters
- Consult factory for any other configuration options
- Reference Voltage inputs
  - 12 Input Version—One set of three phase reference inputs
  - 24 or 48 Input Versions—Two sets of three phase reference inputs
- Line powered from 90-600V, phase-to-phase
- Meets ANSI & IEC metering system accuracy requirements including branch CTs
- Supports solid core, split core and Rogowski Coil CTs
- Meter board features:
  - Easy access terminals for CT wiring, removable connectors
  - Available with or without display embedded options
- Reports volts, amps, power, demand and energy for each circuit
- Limited 5-year warranty



70D48-000



71D48-000



70D12-000



71D12-000

## SERIES 7000 ADVANCED BRANCH CIRCUIT MONITORS

VOLTAGE	DESCRIPTION	CAT. NO.
120V-480VAC	Series 7000 Embedded Panel Mount (no enclosure) Branch Circuit Monitor, 12 inputs, LCD display	70D12-000
	VeriEye 70D12, 3P Disconnect (NEMA 4X Enclosure)	70D12-N4X
	Series 7100 Branch Circuit Monitor, 12 Inputs, LCD display, NEMA 1 enclosure	71D12-000
	Series 7000 Dual Voltage, Embedded Panel Mount (no enclosure) Branch Circuit Monitor, 24 inputs, LCD display	70D24-000
	VeriEye 70D24, 2 x 3P Disconnects (NEMA 4X Enclosure)	70D24-N4X
	Series 7100 Dual Voltage, Branch Circuit Monitor, 24 inputs, LCD display, NEMA 1 enclosure	71D24-000
	Series 7000 Dual Voltage, Embedded Panel Mount (no enclosure) Branch Circuit Monitor, 48 inputs, LCD display	70D48-000
	VeriEye 70D48, 2 x 3P Disconnects (NEMA 4X Enclosure)	70D48-N4X
Series 7100 Dual Voltage, Branch Circuit Monitor, 48 inputs, LCD display, NEMA 1 enclosure	71D48-000	

### COMPATIBLE CT OPTIONS\*

AMP	DESCRIPTION	CAT. NO.
100	Solid Core CT, 333mV, 0.75" (19mm) ID	CDV01-K17
200	Solid Core CT, 333mV, 0.75" (19mm) ID	CDV02-K17
50	Split Core CT, 333mV, 0.4"	CTV5X-WA4
100	Split Core CT, 333mV, 1.6" x 2.1"	CTV01-KD0
200	Split Core CT, 333mV, 2.2" x 2.8"	CTV02-KD0
400	Split Core CT, 333mV, 1.25" x 1.25"	CTV04-KD1
800	Split Core CT, 333mV, 6.0" x 5.2"	CTV08-KG1
5-4000A	Rogowski Coil CT 16", 131mV/1000A @ 60Hz, 109.2mV/1000A @ 50Hz	CRV50-LR2
5-4000A	Rogowski Coil CT 24", 131mV/1000A @ 60Hz, 109.2mV/1000A @ 50Hz	CRV50-LR4

\*333mV CTs, sold separately

## SERIES 7000 ADVANCED 3-PHASE METER

The VerifEye Series 7000 Advanced 3-Phase meters are a versatile option for a broad range of commercial/industrial submetering applications. The meter's versatile power metering functionality continues the VerifEye mission of lowering the total cost of collecting data by reducing install complexity and increasing flexibility. The plug-and-play integration ensures the full complement of data points are immediately captured and made available for countless applications.

- Monitors a single 3-phase circuit Configurations options for 1-pole or 2-pole loads
- Solid core CTs (100A & 200A)
- Split core CTs (50A to 800A)
- Rogowski coil CTs (5A to 4000A)
- Line powered from 90-600V, phase-to-phase
- ANSI & IEC metering system accuracy including branch CTs
- Meter board features:
  - Easy access terminals for CT wiring, removable connectors
  - Easily route cable and view LEDs from any angle
  - Reports volts, amps, power, demand, and energy for each circuit
- Provides multi-phase totals for loads with 1-, 2-, and 3-pole breaker positions
- User-configurable alarm thresholds register for improved load management
- Selectable phase orientation
- Limited 5-year warranty

## SERIES 7000 ADVANCED 3-PHASE METERS

VOLTAGE	DESCRIPTION	CAT. NO.
90-346 Volts AC Line-to-Neutral, 600V Line-to-Line, CAT III	Series 7000 Advanced 3-Phase Meter (DIN Rail Mount)	70D03-000
	VerifEye 70D03, 3P Disconnect (NEMA 4X Enclosure)	70D03-N4X
	Series 7100 Advanced 3-Phase Meter (NEMA 1 Wall Mount Enclosure)	71D03-000

### COMPATIBLE CT. OPTIONS\*

AMP	DESCRIPTION	CAT. NO.
100	Solid Core CT, 333mV:100A, 0.75"	CDV01-K17
200	Solid Core CT, 333mV:200A, 0.75"	CDV02-K17
50	Split Core CT, 333mV:50A, 0.4"	CTV5X-WA4
100	Split Core CT, 333mV:100A, 1" Window	CTV01-KD0
200	Split Core CT, 333mV:200A, 1" Window	CTV02-KD0
400	Split Core CT, 333mV, 400A, 1.25" x 1.25"	CTV04-KD1
800	Split Core CT, 333mV:800A, 3.0"x3.5" Window	CTV08-KG1
5-4000A	5-4000A Rogowski Coil CT 16", 131mV/1000A @ 60Hz, 109.2mV/1000A, @ 50Hz	CRV50-LR2
5-4000A	5-4000A Rogowski Coil CT 24", 131mV/1000A @ 60Hz, 109.2mV/1000A, @ 50Hz	CRV50-LR4

\*333mV CTs, sold separately



70D03-000

70D03-N4X

71D03-000

## SERIES 7000 ADVANCED BRANCH CIRCUIT MONITORS 48 CIRCUIT (24 VIRTUAL METERS)

The VeriEye Series 7000 Virtual Element Advanced Branch Circuit Monitors are a cost-effective solution for electrical load management. The Series 7000 platform is ideal for high density, branch circuit monitoring applications in both new construction and retrofit applications. The Series 7000 monitors up to 24 branch circuits with one single meter board.

- 48 individual Current Transformer (CT) inputs
- Inputs configurable as follows:
  - 24 virtual meters in any combination of single-phase, two-phase, or three-phase limited to the total 48 CT inputs
  - Consult factory for any other configurations
- Line powered from 90-600V, phase-to-phase
- Bidirectional monitoring
- Meets ANSI & IEC metering system accuracy requirements including branch CTs
- Supports split core and Rogowski Coil CTs
- Meter board features:
  - Easy access terminals for CT wiring, removable connectors
  - Available with or without display embedded options
- Reports volts, amps, power, demand and energy for each circuit—each Series 7000 covers a complete 42 breaker panelboard plus mains for a total of 48 circuits
- User-configurable alarm thresholds register for improved load management
- Selectable phase orientation and number of circuits
- Limited 5-year warranty

## SERIES 7000 ADVANCED BRANCH CIRCUIT MONITORS

VOLTAGE	DESCRIPTION	CAT. NO.
90-346 Volts AC Line-to-Neutral, 600V Line-to-Line CAT III	Series 7200 Embedded Panel Mount (no enclosure) Branch Circuit Monitor, 48 inputs, LCD display	72D48-000
	VeriEye 72D48 S7000 Virtual Element 48 input Meter (NEMA 4X Enclosure)	72D48-N4X
	Series 7300 Branch Circuit Monitor, 48 inputs, LCD display, NEMA 1 enclosure	73D48-000

### COMPATIBLE CT. OPTIONS\*

AMP	DESCRIPTION	CAT. NO.
100	Solid Core CT, 333mV:100A, 0.75"	CDV01-K17
200	Solid Core CT, 333mV:200A, 0.75"	CDV02-K17
50	Split Core CT, 333mV:50A, 0.4"	CTV5X-WA4
100	Split Core CT, 333mV:100A, 1" Window	CTV01-KD0
200	Split Core CT, 333mV:200A, 1" Window	CTV02-KD0
400	Split Core CT, 333mV, 400A, 1.25" x 1.25"	CTV04-KD1
800	Split Core CT, 333mV:800A, 3.0"x3.5" Window	CTV08-KG1
5-4000A	5-4000A Rogowski Coil CT 16", 131mV/1000A @ 60Hz, 109.2mV/1000A, @ 50Hz	CRV50-LR2
5-4000A	5-4000A Rogowski Coil CT 24", 131mV/1000A @ 60Hz, 109.2mV/1000A, @ 50Hz	CRV50-LR4

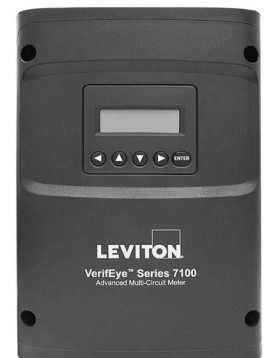
\*333mV CTs, sold separately



72D48-000



72D48-N4X



73D48-000

## SERIES 2500 THREE PHASE METERS

The VerifEye Series 2500 Submeter is a versatile energy monitoring solution designed for both pulse and Modbus based power consumption. Installation is fast and straightforward, featuring tool-free, screwless terminals. This field-programmable meter has a user-friendly setup wizard and built-in diagnostics to help verify proper wiring and configuration. Housed in a NEMA 3R enclosure, the Series 2500 is suitable for both indoor and outdoor environments, offering flexible mounting options and tamper-resistant features.

- One model for 1P/2W, 2P/3W, 3P/4W (WYE), 120-480VAC
  - Configuration options for 1-pole, 2-pole, and 3-pole loads
  - Solid core CTs (100A & 200A)
  - Split core CTs (100A to 800A)
- Meets ANSI C12 metering accuracy requirements
- Installation features:
  - Easy access terminals for CT wiring with screwless lever action connectors
  - User friendly LCD front panel interface with 4-button navigation
  - Configuration wizard for guided initial meter setup
  - Multiple marked conduit entry locations around the meter housing
  - Built-in diagnostic icons
- Alarms for undervoltage, overvoltage, overcurrent, power factor, and reverse energy to aid with troubleshooting
- Flush mount kit for neat and unobtrusive installation aesthetics



25B01-000

## SERIES 2500 THREE PHASE METER KITS

Note: Kits include meter, specified enclosure and required current transformers

### INDOOR/OUTDOOR ENCLOSURE

VOLTAGE	AMPS	CTS INCLUDED	CAT. NO.
120-480V 1P/2W 2P/3W 3P/4W	100	2 Solid Core CTs	25B01-A01
	200		25B01-A02
	100	2 Split Core CTs	25B01-B01
	200		25B01-B02
	100	3 Solid Core CTs	25B01-D01
	200		25B01-D02
	400		25B01-S01
	200	3 Split Core CTs	25B01-S02
400	25B01-S04		
800	25B01-S08		

### COMPATIBLE CT OPTIONS

AMP	DESCRIPTION	CAT. NO.
100:0.333mV	Solid Core, 0.60"	CDV01-W15
200:0.333mV	Solid Core, 0.78"	CDV02-W20
100:0.333V	Split Core, 1.0"	CTV01-KD0
200:0.333V	Split Core, 1.0"	CTV02-KD0
400:0.333V	Split Core, 1.25"	CTV04-KG1
800:0.333V	Split Core, 3" x 3.5"	CTV08-KG1
100:0.333V	Hinged Split Core, .94"	CTV01-WC9
200:0.333V	Hinged Split Core, .94"	CTV02-WC9
400:0.333V	Hinged Split Core, 1.42"	CTV04-WD5

## SERIES 6000 INDUSTRIAL PANEL MOUNT METER

The VerifEye Series 6000 Panel Mount Meters are designed to monitor a comprehensive data set of electrical parameters for industrial applications. These meters fit in a standard 92mm x 92mm panel mount cutout. The VerifEye Series 6000 Panel Mount Meters With NEMA 4X Enclosure come in a NEMA 4X enclosure. Both sets of meters are offered with a range of Split Core and Rogowski smart current transformers to cover a broad range of applications. The integrated configuration wizard makes initial setup quick and easy, reducing commissioning time and providing reliable results.

- Real-time measurement of electrical values with graphical display
- Power quality analysis of service and loads
- Industrial electrical load management
- OEM panel shop applications
- Measurement of active, reactive, and apparent energy
- Alarms features to notify when parameters are outside defined ranges
- Auto-ranging CTs simplify setup and eliminate mistakes
- CT options from 25A to 6000A
- 5-year warranty



Series 6000 Meter

## SERIES 6000 INDUSTRIAL PANEL MOUNT METERS

### SERIES 6000 PANEL MOUNT METER

VOLTAGE	DESCRIPTION	CAT. NO.
Universal 3PH 3W/4W	Modbus RTU (RS485) Interface	60P00-000
Universal 3PH 3W/4W	Modbus TCP (Ethernet) Interface	61P00-000

### SERIES 6000 PANEL MOUNT METER WITH 4X NEMA ENCLOSURE

VOLTAGE	DESCRIPTION	CAT. NO.
Universal 3PH 3W/4W	Modbus RTU (RS485), Modbus TCP (Ethernet), and BACnet IP interface	61N00-000

### CURRENT TRANSFORMERS

DESCRIPTION	CAT. NO.	
.40 in (10mm) ID, .5A-75.6A	Series 6000 Split Core CT	CTS1A-K10
.55 (14mm) ID, 0.8A-192A		CTS2B-G14
.83 in (21mm) ID, 1.26A-300A		CTS3C-G21
1.26 in (32mm) ID, 1.26A-300A		CTS6D-G32
24.72 in (628mm) overall length, 7.88 in (200mm) ID, 12A - 4800A	Series 6000 Rogowski CT	CRS4K-WRL
37.09 in (1100mm) overall length, 11.81 in (300mm) ID, 32A - 7200A		CRS6K-WRM
74.21 in (1885mm) overall length, 23.62 in (600mm) ID, 32A - 7200A		CRS6K-WRN

### CT CABLES

DESCRIPTION	CAT. NO.
Series 6000 Meter - CT Cable RJ12 - 1x5M	CCSRJ-105
Series 6000 Meter - CT Cable RJ12 - 1x10M	CCSRJ-110
Series 6000 Meter - CT Cable RJ12 - 3x1M	CCSRJ-301
Series 6000 Meter - CT Cable RJ12 - 3x2M	CCSRJ-302
Series 6000 Meter - CT Cable Adapter RJ12 Female to Female	CCSRJ-3FF



Series 6000 Meter With NEMA 4X Enclosure



Split Core CT



Rogowski Coil CT

## CURRENT TRANSFORMERS

The better the equipment, the better the measurement. Leviton meters utilize highly accurate current transformers for revenue-grade performance certified to ANSI standards. Competing products use current sensors that do not provide the same level of performance. Leviton Meter Kits include Split Core, Rogowski Coil, or Solid Core Current Transformers (CTs) for high-quality, long-term accuracy and reliability. For added safety, all Leviton current transformers come with built-in voltage suppression devices that prevent hazardous voltages from developing on CT secondaries should they become disconnected from a meter with load current present. Compact and cost-effective solid core CTs slip over power lines to measure the electrical current flowing through the line. For solid core CT installation, power must be de-energized and the circuit opened, in order to slip the CT over the power line.

## CURRENT TRANSFORMERS

### SOLID CORE—FOR USE WITH SERIES 8000 METERS, MINI METERS AND MMUs ONLY

AMP	DESCRIPTION	CAT. NO.
100:0.1A	2 Solid Core, 1 each Black, Red	CDA01-212
100:0.1A	3 Solid Core, 1 each Black, Red, Blue	CDA01-312
200:0.1A	2 Solid Core, 1 each Black, Red	CDA02-212
200:0.1A	3 Solid Core, 1 each Black, Red, Blue	CDA02-312
100:0.1A	Solid Core, 0.72", Black	CDA01-K12
	Solid Core, 0.72", Blue	CDA01-L12
	Solid Core, 0.72", Red	CDA01-R12
200:0.1A	Solid Core, 0.72", Black	CDA02-K12
	Solid Core, 0.72", Blue	CDA02-L12
	Solid Core, 0.72", Red	CDA02-R12
400:0.1A*	Solid Core, 1.5", Black	CDF04-K24

\*Not for use with Mini Meters

### 333mV SOLID CORE—FOR USE WITH SERIES 7000 AND SERIES 2500 METERS ONLY

AMP	DESCRIPTION	CAT. NO.
100:0.333mV	Solid Core, 0.60"	CDV01-W15
200:0.333mV	Solid Core, 0.78"	CDV02-W20

### SPLIT CORE—FOR USE WITH SERIES 8000, MINI METERS METERS AND MULTIPLE METER UNITS (MMUs) ONLY

AMP	DESCRIPTION	CAT. NO.
100:0.1A	Split Core, .75" x .75"	CTA01-KC0
200:0.1A	Split Core, 1" x 1"	CTA02-KD0
400:0.1A	Split Core, 1.5", x 1.5"	CTA04-KD1
800:0.1A	Split Core, 3" x 3.5"	CTA08-KG1
1200:0.1A	Split Core, 4" x 6"	CTA12-KJ4

### 333mV SPLIT CORE—FOR USE WITH SERIES 7000 AND SERIES 2500 METERS ONLY

AMP	DESCRIPTION	CAT. NO.
100:0.333V	Split Core, 1.0"	CTV01-KD0
200:0.333V	Split Core, 1.0"	CTV02-KD0
400:0.333V	Split Core, 1.25"	CTV04-KG1
800:0.333V	Split Core, 3" x 3.5"	CTV08-KG1
50:0.333V	Hinged Split Core, 0.4"	CTV5X-WA4
100:0.333V	Hinged Split Core, .94"	CTV01-WC9
200:0.333V	Hinged Split Core, .94"	CTV02-WC9
400:0.333V	Hinged Split Core, 1.42"	CTV04-WD5

### ROGOWSKI COIL—FOR USE WITH SERIES 7000 METERS ONLY

AMP	DESCRIPTION	CAT. NO.
50-4000A	Rogowski Coil, 16"	CRV50-LR2
	Rogowski Coil, 24"	CRV50-LR4



Solid Core  
Current Transformers  
100A, 200A, 100mA



Solid Core  
Current Transformers  
100A-200A, .333mV



Split Core  
Current Transformers  
50A - 400A, .333V

Split Core  
Current Transformers  
100A-1,200A, 100mA



Rogowski Coil  
Current Transformer  
50A-5000A, .333V

## VERIFEYE COMMUNICATION PRODUCTS



Energy Monitoring Hub (Dual Ethernet & Modbus)



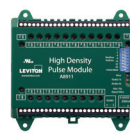
Energy Monitoring Hub (EMH)



EMB Hub



EMB HubLite



High Density Pulse Module



Flex I/O Module



ModHopper

Specifications	Data Acquisition Hubs (Modbus Master)					Input/Output Module		Wireless Modbus/Pulse Transceiver
	Energy Monitoring Hub Dual Ethernet, 1 Modbus, 4 Pulse, 2 Digital Alarm	Energy Monitoring Hub (EMH)*	EMB Hub*	EMB HubLite*	High Density Pulse Module	Flex I/O Module	ModHopper	
	EMHxD	EMHSP	A8812	A8810	A7810	A8911	A8332	R9120
Communication Protocols	Modbus RTU Modbus TCP BACnet IP BACnet MSTP TCP/IP PPP HTTP/HTML FTP NTP XML SNMP-Trap		Modbus RTU Modbus TCP TCP/IP PPP HTTP/HTML FTP NTP XML SNMP-Trap BACnet IP		Modbus TCP TCP/IP PPP HTTP/HTML FTP NTP XML SNMP-Trap BACnet IP		Modbus RTU	Modbus RTU
Applications	Use with an Ethernet (LAN) connection to push-or-pull data via HTTP, XML, and FTP  Connect to web-based (IP-based) software dashboards, energy information management systems and demand response systems					Use with EMH to take advantage of plug-in communication  Use with ModHopper for wireless communication  Push-or-pull meter data to VerifEye kiosks and software applications		Designed specifically for wireless submetering  Collect meter data from multiple buildings over long distances  Self-healing mesh network using frequency agile technology

\* Pulse, analog, status and resistive

### HOW TO SELECT THE APPROPRIATE DATA ACQUISITION HUB

	Modbus TCP	Modbus RTU	Pulse Inputs Onboard	Flex Inputs On Board**	BACnet
EMHxD-220 EMH	X	X	-	-	X
EMHSP-214 EMH	X	X	4	-	X
A8812-000 EMH	X	X	8	8	X
A8810-000 EMB Hub	X	X	-	-	X
A7810-000 EMB HubLite	X	-	4	-	X

## METERING COMMUNICATIONS SYSTEMS

To create a data network between Leviton submeters and stakeholders (BAS, third party billing, Building Manager Online (BMO) 3.0), Leviton offers Metering Communication Systems. These solutions transmit data from meters to end systems, creating a seamless transition between data collection and data display. Leviton Metering Communications Systems also enable facilities to create metering systems that can easily share data through open protocols such as Modbus, and IP-based data transfer through HTTP/FTP of .csv or XML files. The results are robust and reliable networks scalable to accommodate future expansion, with data made accessible from any internal or external location.

## DATA ACQUISITION HUBS

### ENERGY MONITORING HUBS

Data Acquisition Hubs, including the Energy Monitoring Hubs (EMH and EMHxD), EMB and EMB HubLite are intelligent, flexible data acquisition servers allowing users to collect energy data from meters and environmental sensors. As Designed to connect to IP-based applications such as enterprise energy management, demand response and smart grid programs, Hub servers allow you to connect thousands of energy points, benchmark energy usage and reduce energy costs.

- Collects and logs data from connected wired or wireless devices based on user-set intervals
- Pushes or pulls data via HTTP, XML, FTP or any custom protocol using an Ethernet (LAN) connection
- No software required—information can be accessed through any web browser in any location
- Plug and play connectivity
- Compatible with nearly any front-end software platform allowing customers to use a variety of reporting tools
- Push or pull meter data to energy dashboards, kiosks and software applications
- Monitor performance of critical systems (lighting, HVAC, PDUs, inverters, etc.)

## DATA ACQUISITION HUBS

DESCRIPTION	CAT. NO.
Energy Monitoring Hub, Dual Ethernet, Dual Modbus	EMHxD-220
Energy Monitoring Hub, 2 Ethernet, 1 Modbus (RS485), 4 Pulse Inputs, 2 Digital Outputs	EMHSP-214
Energy Monitoring Hub	A8812-000
EMB Hub	A8810-000
EMB HubLite	A7810-000
Power Supply for EMB Hubs and EMB HubLite (order separately)*	YBM07-001

\*Power supply is used for EMB Hub and HubLite



Energy Monitoring Hub



Energy Monitoring Hub (Dual Ethernet, Dual Modbus)



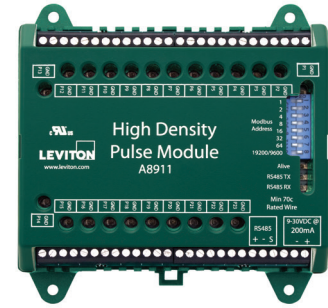
EMB Hub

## INPUT/OUTPUT MODULES

### HIGH DENSITY PULSE MODULE

The High Density Pulse Module provides a convenient way to expand a Leviton VerifEye Submetering System by connecting the HD Pulse Module to an Energy Monitoring Hub (EMH) and/or ModHopper for system expansion. The HD Pulse Module accepts up to 23 standard pulse sensors and can function as a slave device with any Modbus master. This data can easily be integrated to a network of other critical energy sensors to provide a comprehensive energy monitoring solution. The HD Pulse Module is ideal for applications with a high density of pulse output devices, giving users access to meters that would previously require multiple modules.

- External communications handled via shielded twisted pair 18-22 gauge wire allowing communication up to 4,000 ft and pulse input communications up to 200 ft using 18-24 gauge control wire
- DIN or wall mounting make installations quick and easy
- Device verification—LED indicators for each pulse input allow for fast indication and verification of pulses to reduce installation and troubleshooting time
- Non-volatile memory retains configuration and pulse count totals during power failures for reliable data collection and retention
- Easily add pulse meters to Modbus network for a scalable, open protocol solution
- Field upgradable firmware for user-friendly future upgrades and expansion

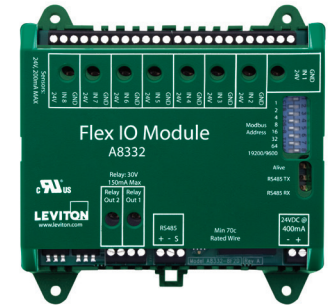


High Density Pulse Module

### FLEX I/O MODULE

The Flex I/O Module is a cost-effective way to collect data from meters or sensors and bring the information into a Modbus network or energy monitoring system. As a stand-alone or bundled package, the Flex I/O Module can be incorporated with data acquisition and metering devices to provide a cost-effective energy monitoring solution. The Flex I/O Module is compatible with virtually any Modbus master, allowing customers the flexibility to use it in existing Modbus networks. Use with the VerifEye Energy Monitoring Hub (EMH).

- Easily add meters and sensors to the Modbus network
- 8x user selectable inputs
- 2x output relays for manual controls or pulse replication
- Non-volatile memory
- Industrial temperature range of -22 to 158°F (-30 to 70°C)
- LEDs for visual verification/status reduce installation and troubleshooting time
- Din or wall mount for easy installation
- Field upgradable firmware for user-friendly future upgrades and expansion



Flex I/O Module

## INPUT/OUTPUT MODULES

DESCRIPTION	CAT. NO.
High Density Pulse Module, 23 Inputs	A8911-000
Flex I/O Module, 8 User Selectable Inputs, 2 Relay Outputs	A8332-000
DIN Rail Mount Power Supply, +24VDC	PST24-H10

## MODHOPPER

### WIRELESS

The ModHopper is designed with breakthrough mesh technology that makes connecting Modbus RTU (RS-485) and pulse devices simple and cost effective. Our “smart” ModHopper transceivers eliminate the need for costly wiring runs allowing users to wirelessly capture meter data in the most challenging retrofit and campus environments. Collect data from meter points in existing buildings with minimum down-time or disruption of day-to-day operations.

- Designed specifically for wireless metering and VerifEye submetering solutions for guaranteed compatibility
- No software or programming required and devices automatically configure when powered, reducing labor costs and installation time
- Wireless “mesh” network—self-healing, self-optimizing for ease of installation and maintenance
- Connect up to 32 Modbus and 2 pulse devices per ModHopper for the ultimate expandable solution
- Long distance communication (3,000 ft indoor/14 miles LOS Outdoors) for flexibility of placement and easier future expansion
- Multiple independent network capability
- Reliable, constant two-way communication and packet verification
- Point to multi-point communication
- Field upgradable firmware for user-friendly future upgrades and expansion



ModHopper

## WIRELESS MODBUS/PULSE TRANSCEIVER

DESCRIPTION	CAT. NO.
ModHopper and Power Supply	R9120-500
High Gain Antenna for ModHopper	R9120-ANT



High Gain Antenna for ModHopper

## NEMA COMMUNICATION BUNDLES

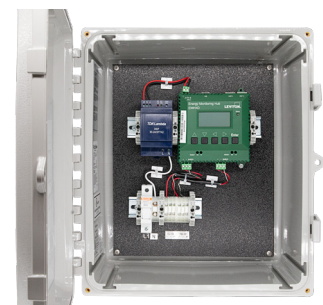
NEMA Communication Bundles combine VerifEye’s Data Acquisition Products into one enclosure for a VerifEye-exclusive, all-in-one-bundled communication solution for indoor use. All VerifEye NEMA communication bundles have one part number and are factory pre-assembled for ease of ordering eliminating the need for field assembly.

### NEMA COMMUNICATION BUNDLES

DESCRIPTION	CAT. NO.
Energy Monitoring Hub, Dual Ethernet, Dual Modbus with Line Voltage Power Supply, NEMA 4X Enclosure	EMHxD-N4X
Energy Monitoring Hub, 2 Ethernet, 1 Modbus (RS485), 4 Pulse Inputs, 2 Digital Outputs with Line Voltage Power Supply, NEMA 4X Enclosure	EMHSP-N4X
Energy Monitoring EMB Hub with Line Voltage Power Supply, NEMA 4X Enclosure	A8810-PS1
Energy Monitoring EMB HubLite with Line Voltage Power Supply, NEMA 4X Enclosure	A7810-PS1
HD Pulse Module with Line Voltage Power Supply, NEMA 4X Enclosure	A8911-PS1
Flex I/O Module with Line Voltage Power Supply, NEMA 4X Enclosure	A8332-PS1



A8810-PS1



EMHxD-N4X

## WIRELESS AMR SYSTEM FOR SUBMETERING

The Leviton VerifEye Wireless Automated Meter Reading (AMR) System is specifically designed to support wireless data collection from energy and water submeters in residential multi-tenant and specific commercial building applications. This fixed-network system allows for ease of data acquisition and export to tenant billing software and management platforms.

### WIRELESS METERING DATA TRANSCEIVER (MDT)

The MDT records usage data from a wide variety of energy and water meters and transmits that data via radio frequency to the Data Concentrating Access Point (DCAP) in hourly intervals.

- Single Input Pulse
- Dual Input Pulse
- Encoder
- Interval data options are also available with Time of Use (TOU) models

### WIRELESS METERING DATA TRANSCEIVER (MDT) WITH LCD

For use in properties where easy access to meter readings are required under the Americans with Disabilities Act. The LCD screen displays the consumption for 60 seconds when the button is pushed and displays the same consumption value as the meter. All programmed parameters transfer to the DCAP for seamless integration into the data provided by the CIT and daily reports.

- Specialized enclosure with a standard sized wallplate back piece that mounts to a standard 1-gang electrical box for a professional looking installation
- Powered by two AA batteries for a five-year battery life under typical conditions
- NTEP certification #16-013 accepted by California Weights and Measures

### DATA CONCENTRATING ACCESS POINTS (DCAPS)

The DCAP is the brains of the VerifEye wireless system incorporating a powerful embedded micro-computer and integrated radio transceiver. The DCAP communicates with each Repeater and MDT and stores meter reading history.

- Local storage of up to one million data points
- Multiple levels of security for database access
- Integrated alarm monitoring and configurable e-mail alerts
- Accurate real-time clock
- USB port for initial device setup

### RF NETWORK DIVERSITY REPEATER

Extends the range of two-way radio signals between MDTs and DCAPS

- Provides improved ability to receive distant RF signals
- Diversity antennas for optimal system communications redundancy



Wireless MDT



Wireless MDT with LCD



DCAP



Repeater

## WIRELESS METERING DATA TRANSCEIVER (MDT)

DESCRIPTION	CAT. NO.
Wireless Metering Data Transceiver (Wireless DCAP required to complete system), single pulse counter, 15 min TOU battery powered	T70MB-ST0
Wireless Metering Data Transceiver (Wireless DCAP required to complete system), single pulse counter, 1-hour interval, battery powered	T70MB-SP0
Wireless Metering Data Transceiver (Wireless DCAP required to complete system), dual pulse counter, 1-hour interval, battery powered	T70MB-DP0

## WIRELESS METERING DATA TRANSCEIVER (MDT) WITH LCD

DESCRIPTION	CAT. NO.
Wireless Metering Data Transceiver with Display (Wireless DCAP required to complete system), single pulse counter, 1-hour interval, battery powered	T75MB-SP0
Wireless Metering Data Transceiver with LCD (Wireless DCAP required to complete system), dual pulse counter, 1-hour interval, battery powered	T75MB-DP0

## DATA CONCENTRATING ACCESS POINTS (DCAPS)

DESCRIPTION	CAT. NO.
DCAP, low capacity (150 meter points max), includes radio receiver	T25DX-151
DCAP, standard capacity, (1000 meter points max), includes radio receiver	T25DX-102
DCAP, high capacity, (2000 meter points max) includes radio receiver	T25DX-202

## WIRELESS REPEATER

DESCRIPTION	CAT. NO.
Wireless Repeater - extended range for use with wireless submetering systems. 5VDC, 800mA (120VAC power supply included)	T95RX-000

## UL508A PANELS FOR SUBMETERING & DATA ACQUISITION

Leviton offers a wide range of configured panel solutions for the communications, data acquisition, and submetering market. With in-house UL508A Panel Shop certification, Leviton can deliver significantly better value than third party panel shops.

### 70D48-N4X HIGH DENSITY METER

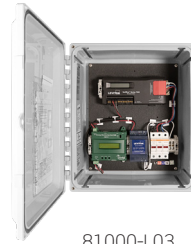
- 48 circuit meter with dual reference voltage inputs
- Supports both Modbus and BACnet interface
- Fuse protection for two reference voltage circuits



70D48-N4X

### 81000-L03 DATA ACQUISITION SOLUTIONS

- DAS for data logging and control
- 3-phase meter for bi-directional power monitoring
- 24V DC Power Supply included



81000-L03

### 81M00-0 DATA ACQUISITION SOLUTION

- DAS with Wireless ModHopper
- Base Station for 900 MHz wireless architecture
- 24V DC Power Supply included



81M00-0

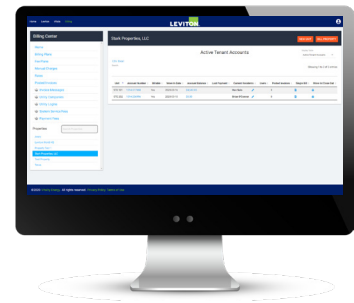
## UL508A CONFIGURED PANEL SOLUTIONS

DESCRIPTION	CAT. NO.	INTEGRATED DAS	INTEGRATED METER	INTEGRATED COMMUNICATIONS
VerifEye ModHopper, Antenna Connector (No-antenna), Power Supply	U0M00-E00	-	-	R9120 ModHopper Wireless
VerifEye ModHopper, Antenna Connector, Power Supply	U0M00-P00	-	-	R9120 ModHopper Wireless
VerifEye ModHopper, HD Pulse Module, Power Supply	UMH00-000	-	-	A8911 HD Pulse Module, R9120 ModHopper
VerifEye A8810, Dual Protocol Modem	810DU-0	A8810	-	4G Dual Protocol Modem
VerifEye A8810, HD Pulse Module, Power Supply	81H00-000	A8810	-	A8911 HD Pulse Module
VerifEye A8810, HDPM, Dual-Band Modem (CradlePoint)	81HDU-0	A8810	-	A8911 HD Pulse Module, 4G Dual Protocol Modem
VerifEye A8810, ModHopper, Power Supply	81M00-000	A8810	-	-
VerifEye A8810, 70D03, Power Supply	81000-L03	A8810	70D03	-
VerifEye A8810, 70D12, Power Supply	81000-L12	A8810	70D12	-
VerifEye A8810, 70D24, Power Supply	81000-L24	A8810	70D24	-
VerifEye A8810, 70D48, Power Supply	81000-L48	A8810	70D48	-
VerifEye A8810, 70D03, 4G Dual Protocol Modem with WiFi	810DU-L03	A8810	70D03	4G Dual Protocol Modem with WiFi*
VerifEye A8810, 70D12, 4G Dual Protocol Modem with WiFi	810DU-L12	A8810	70D12	4G Dual Protocol Modem with WiFi*
VerifEye A8810, 70D24, 4G Dual Protocol Modem with WiFi	810DU-L24	A8810	70D24	4G Dual Protocol Modem with WiFi*
VerifEye A8810, 70D48, 4G Dual Protocol Modem with WiFi	810DU-L48	A8810	70D48	4G Dual Protocol Modem with WiFi*
VerifEye 70D03, 3P Disconnect	70D03-N4X	-	70D03	-
VerifEye 70D12, 3P Disconnect	70D12-N4X	-	70D12	-
VerifEye 70D24, 3P Disconnect	70D24-N4X	-	70D24	-
VerifEye 70D48, 2 x 3P Disconnects	70D48-N4X	-	70D48	-

## VERIFEYE SOFTWARE PRODUCTS

### BUILDING MANAGER ONLINE (BMO)

VerifEye Building Manager Online web-based software provides the Measurement & Verification (M&V) tools necessary to get the most out of your submetering system.



	Base Energy Management	Energy Management with Advanced Reporting	Tenant Billing
	Web-Based Software		
Primary Functions	<p>Provides a summary of energy profiles to help identify high and low consumption as well as energy usage patterns for user defined intervals. Populates reports based on user configured preferences. Assists end users in meeting the growing requirements of local and national energy codes such as IECC, ASHRAE 90.1, Title 24, Seattle Energy Code, and New York Local Laws 88, 132, and 133.</p>	<p>Includes all the functionality of the Base Module with the addition of enhanced reporting and dashboarding features.</p> <p>Adds support for Daily and Hourly Heat Maps, Drift Analysis reporting and Kiosk display.</p> <p>Provides custom report design features.</p>	<p>Monitor individual units to create invoices and tenant billing reports.</p> <p>Supports an online portal for tenants to log in and monitor their usage and billing information.</p> <p>Includes all the features of both the Base and Advanced Reporting Modules.</p>

### BASE MODULE

DESCRIPTION	CAT. NO.
BMO Energy Management Software - Annual License (50 Data Points)	BMOBM-050
BMO Energy Management Software - Monthly License (50 Data Points)	BMOBM-M50

### ADVANCED REPORTING MODULE

DESCRIPTION	CAT. NO.
BMO Energy Management Software with Advanced Reporting - Annual License (50 Data Points)	BMOAR-050
BMO Energy Management Software with Advanced Reporting - Monthly License (50 Data Points)	BMOAR-M50

### TENANT BILLING MODULE

DESCRIPTION	CAT. NO.
BMO Tenant Billing Software - Annual License (50 Data Points)	BMOTB-050
BMO Tenant Billing Software - Monthly License (50 Data Points)	BMOTB-M50

### SUPPORT SERVICES

DESCRIPTION	CAT. NO.
BMO Short Term Support Plan (90 Days)	BMOSW-STP
BMO Long Term Support Plan (1 Year)	BMOSW-LTP