

Installation Instructions

PopTop 2-Position (ON/OFF) Valve Body Rebuild Kit

Schneider Electric Erie Controls' unique PopTop design makes installation and maintenance a snap with easy, one-handed engagement or removal of the motorized actuator to the valve body.

Schneider Electric Erie's valves are available in 2-way and 3-way port configurations, 1/2" (13 mm) through 1-1/4" (32 mm) sweat or threaded connections. Body type "VT" is rated for 32°F to 200°F fluid at 40°F to 104°F ambient. Body type "VS" is rated for 32°F to 250°F fluid, 15 PSIA steam, at up to 169°F ambient.

Table-1 Kit Types.

| Kit Number | Valve Body Type - "VT" or "VS" |
|------------|-----------------------------------|
| 100-080 | 2-way, through 5.0 C _v |
| 100-081 | 2-way, 7.0 C _v |
| 100-082 | 2-way, 8.0 C _v |
| 100-083 | 3-way, through 5.0 C _v |
| 100-084 | 3-way, 7.0 C _v |
| 100-085 | 3-way, 7.5 C _v |

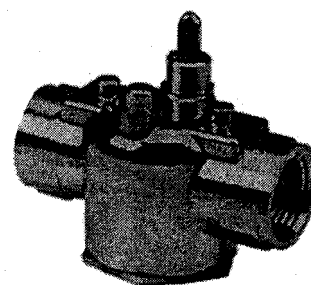
Table-2 Parts List.

| Part No. | Qty. | Part Name |
|----------|------|---------------------------------------|
| 1 | 1 | Body |
| 2 | 1 | Stem* |
| 3 | 1 | "C"-clip Retaining Ring* |
| 4 | 2 | Stem O-Ring* |
| 5 | 1 | Retaining Ring* |
| 6 | 1 | Paddle (Disc)* |
| 7 | 1 | Rivet* |
| 8 | 1 | 2-Way Back Cap or 3-Way Inlet Fitting |
| 9 | 1 | Back Cap O-Ring* |

*Included with kit. Parts 2,4,5,6, and 7 are part of Stem and Paddle Assembly.

Instructions

1. Remove actuator.
2. Manually break old "C"-clip Retaining Ring (3).
3. Remove back cap (8).
4. Remove old Stem and Paddle Assembly and discard.
5. Insert new Stem and Paddle Assembly into body (1), with Stem (2) inserted through hole.
6. Gently push new "C"-clip retaining ring (3) over end of Stem (2) until clip snaps into groove.



Schneider Electric PopTop 2-Way, 1/2" Body Style

7. Replace back cap O-ring (9) and tightly screw in back cap (8).

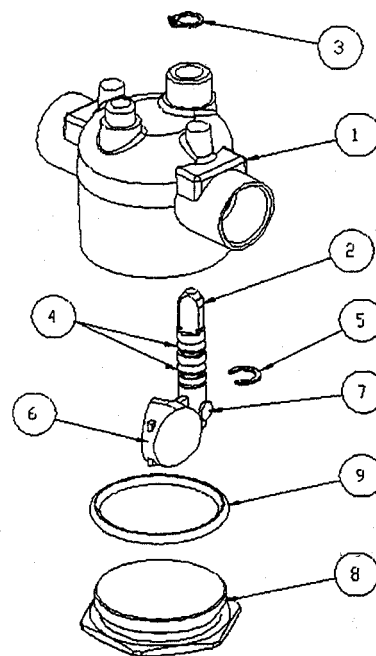


Figure-1 Schneider Electric PopTop 2-Position Valve Body Components (Shown: 2-Way).

On October 1st, 2009, TAC became the Buildings business of its parent company Schneider Electric. This document reflects the visual identity of Schneider Electric, however there remains references to TAC as a corporate brand in the body copy. As each document is updated, the body copy will be changed to reflect appropriate corporate brand changes.

Copyright 2010, Schneider Electric
All brand names, trademarks and registered
trademarks are the property of their respective
owners. Information contained within this
document is subject to change without notice.

F-1-61-116-3

