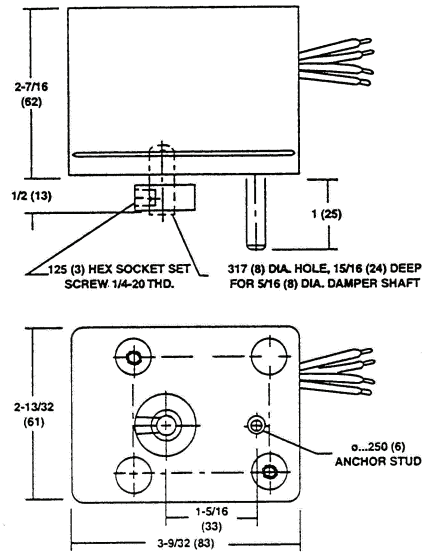
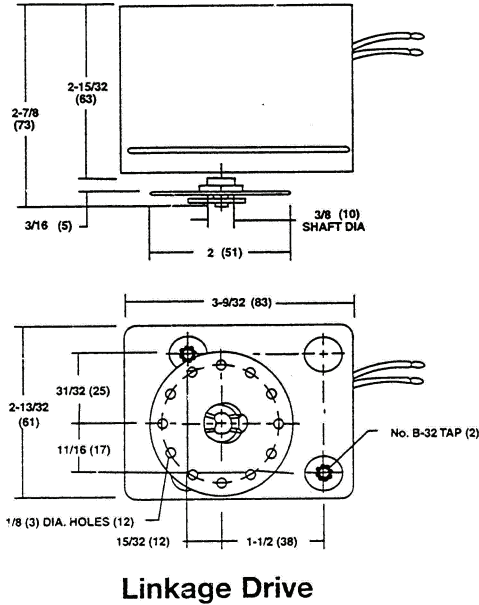


# 453L, 453H, 453R

## Schneider Electric Erie™ Damper Operators

### Dimensions



### Specifications

**Motor:** 24V, 120V, 230V, 277V.

**Rating:**

453L, 7VA.

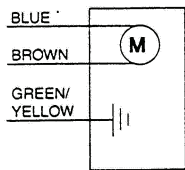
453H, 9VA.

**Auxiliary Switch:** SPDT Normally open or normally closed.

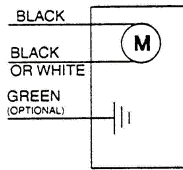
**Rating:** 10 Amp @ 277 Vac, 1/2 HP @ 250Vac.

### Wiring

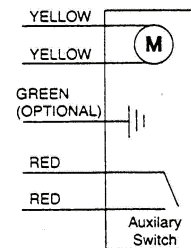
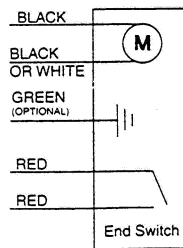
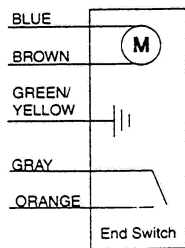
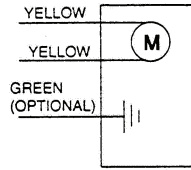
#### “L & H” Cordset Round



#### “L” Wire Leads



#### “H” Wire Leads



Life Is On

Schneider Electric

