

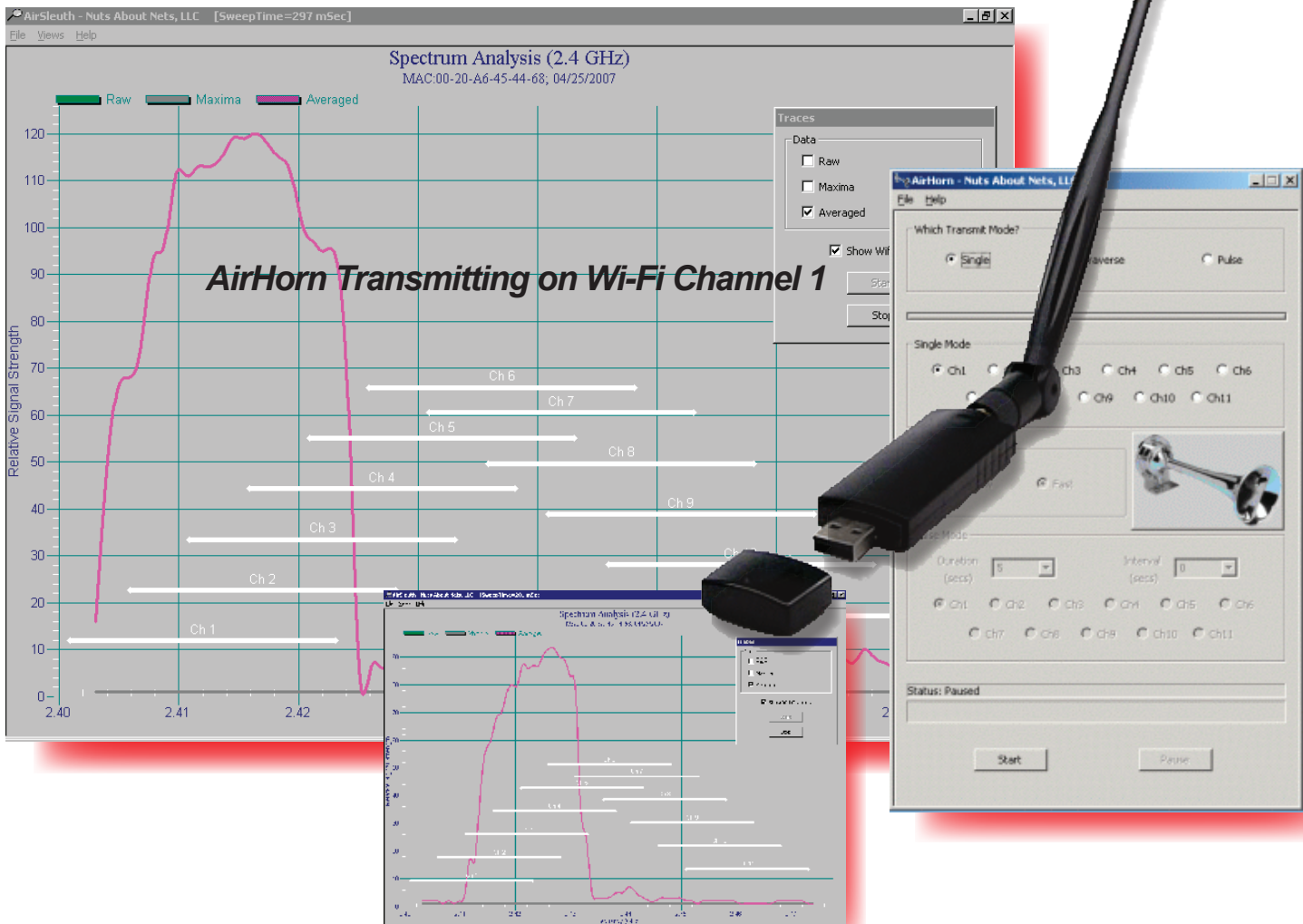
WLAN 2.4GHz Signal Generator

*Worlds First 2.4GHz dedicated,
11 channel Wi-Fi Signal Generator*

- AirHorn Pro -

*Why rely on "blind faith" when it comes to
the set-up and performance of your
wireless networks?*

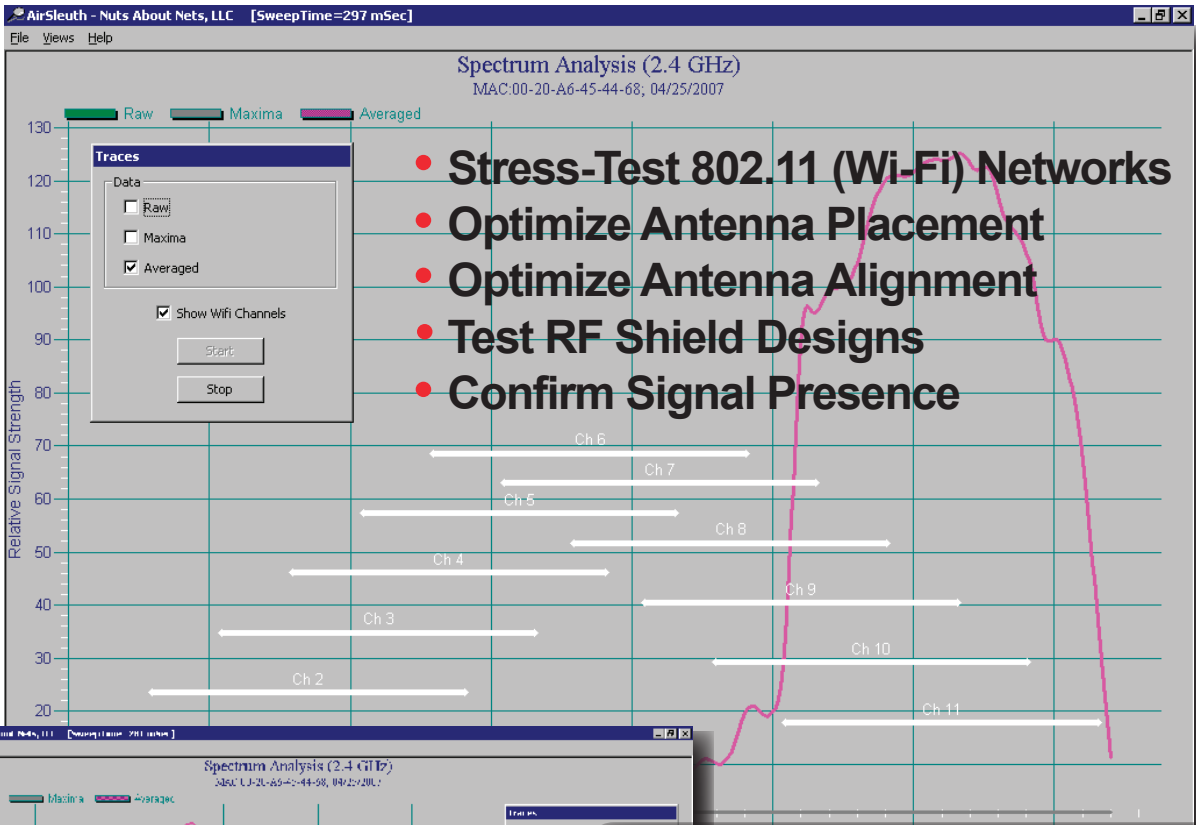
- Stress-Test 802.11 (Wi-Fi) Networks
- Optimize Antenna Placement
- Optimize Antenna Alignment
- Test RF Shield Designs
- Confirm Signal Presence



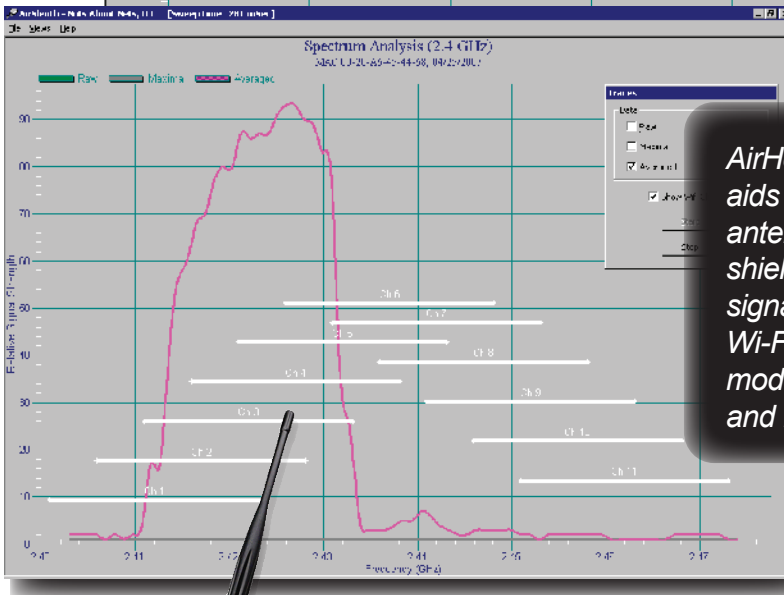
***Eliminate the Mystery & Guesswork
with Kaltman Creations' Affordable RF Solutions!***

**Eliminate the Mystery & Guesswork
with Kaltman Creations' Affordable RF Solutions!**

- AirHorn Pro -



- Stress-Test 802.11 (Wi-Fi) Networks
- Optimize Antenna Placement
- Optimize Antenna Alignment
- Test RF Shield Designs
- Confirm Signal Presence



AirHorn is a unique, PC based signal generator that aids in the testing of WLAN configurations, Wi-Fi antenna positioning, receiver performance and RF shielding. AirHorn transmits a stable & accurate RF signal in the 2.4GHz ISM bands on each of the 11 Wi-Fi (802.11) channels. It has 3 transmission modes of Single Channel, Traverse all Channels, and Peak.

Incredibly Affordable!
Visit www.RFAnalyzer.net
for pricing.

**Why rely on "blind faith" when it comes
to the set-up and performance of your
wireless networks?**

Another Innovative product from
the "First to Market" people at

Kaltman Creations

"First to Market" Solutions

www.rfanalyzer.net

678-714-2000

System Requirements

Windows 98, 2000, XP, Vista - USB or PCMCIA Type II Ports - CPU and memory requirements are modest, AirSleuth runs fine on older laptops and desktop computers and does not require Windows.Net